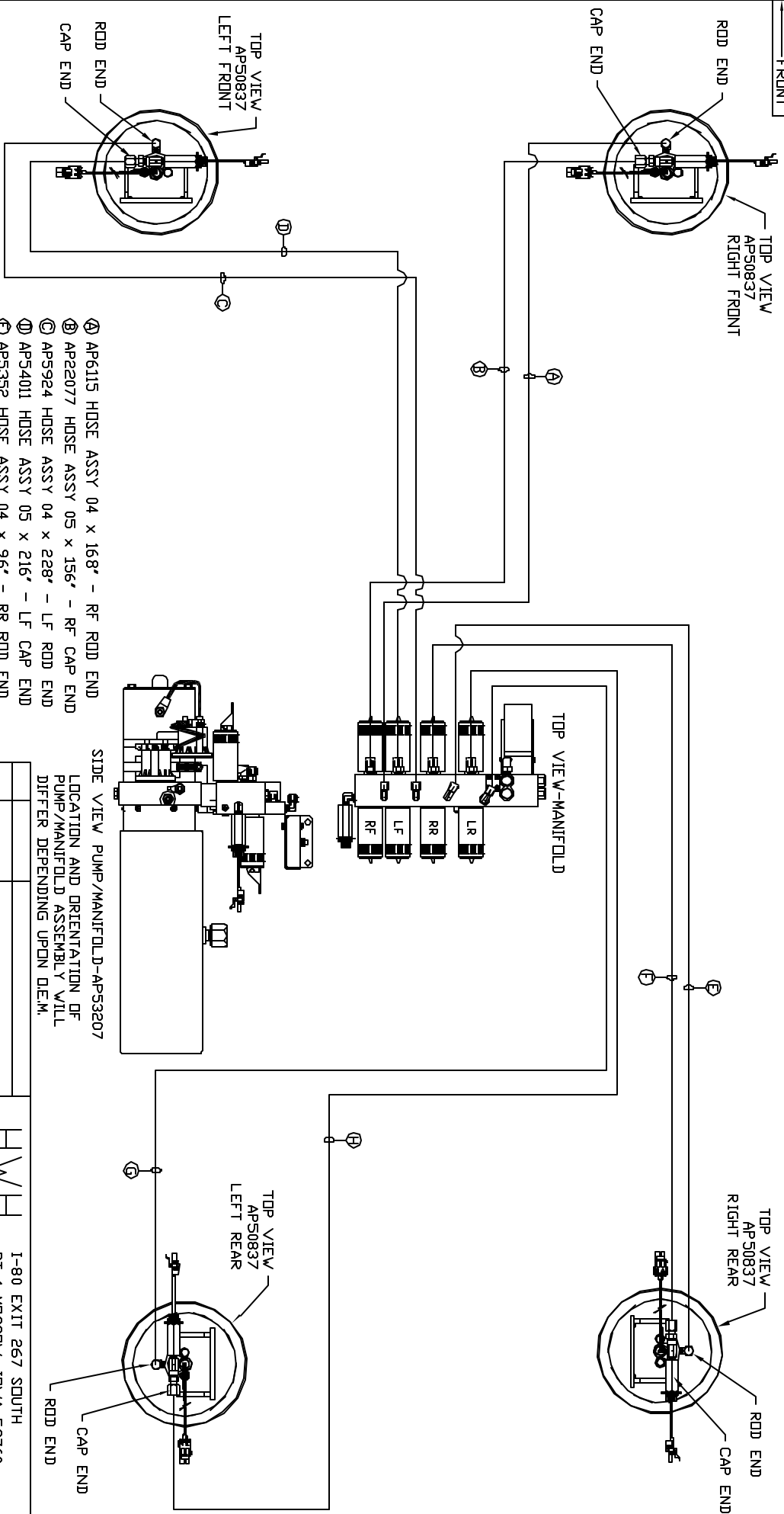


ORIENTATION
FRONT



- ① AP6115 HOSE ASSY 04 x 168' - RF ROD END
- ② AP22077 HOSE ASSY 05 x 156' - RF CAP END
- ③ AP5924 HOSE ASSY 04 x 228' - LF ROD END
- ④ AP54011 HOSE ASSY 05 x 216' - LF CAP END
- ⑤ AP5352 HOSE ASSY 04 x 96' - RR ROD END
- ⑥ AP42051 HOSE ASSY 05 x 84' - RR CAP END
- ⑦ AP4161 HOSE ASSY 04 x 120' - LR ROD END
- ⑧ AP42054 HOSE ASSY 05 x 108' - LR CAP END

SIDE VIEW PUMP/MANIFOLD-AP53207
LOCATION AND ORIENTATION OF PUMP/MANIFOLD ASSEMBLY WILL DIFFER DEPENDING UPON DEM.

NOTE: INSTALLATION MUST CONFORM TO GOOD SHIP PRACTICES, SAE STANDARDS, RVIA STANDARDS, AND OTHER APPLICABLE STANDARDS.

LEVELING SYSTEM: AP55004

NO.	DATE	REVISION

THE INFORMATION DISCLOSED IN THIS DRAWING IS CONFIDENTIAL AND MUST NOT BE DISCLOSED OR USED IN ANY MANNER WHICH WILL BE DETRIMENTAL TO THE IHH CORPORATION

HW H 1-80 EXT 267 SOUTH
RT 1 MOSCOV, IDWA 52760

SCALE 1:6 DATE 18MARI15 DRAWN BY .

HYD CONN DIAGRAM

PEAK DRAWING NUMBER MP70863