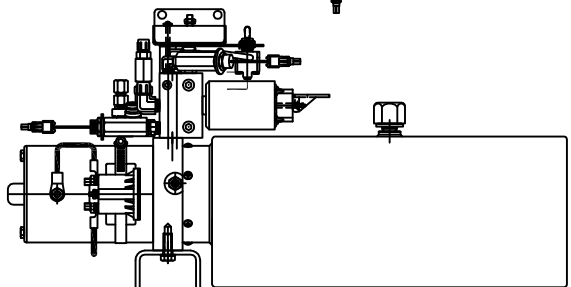
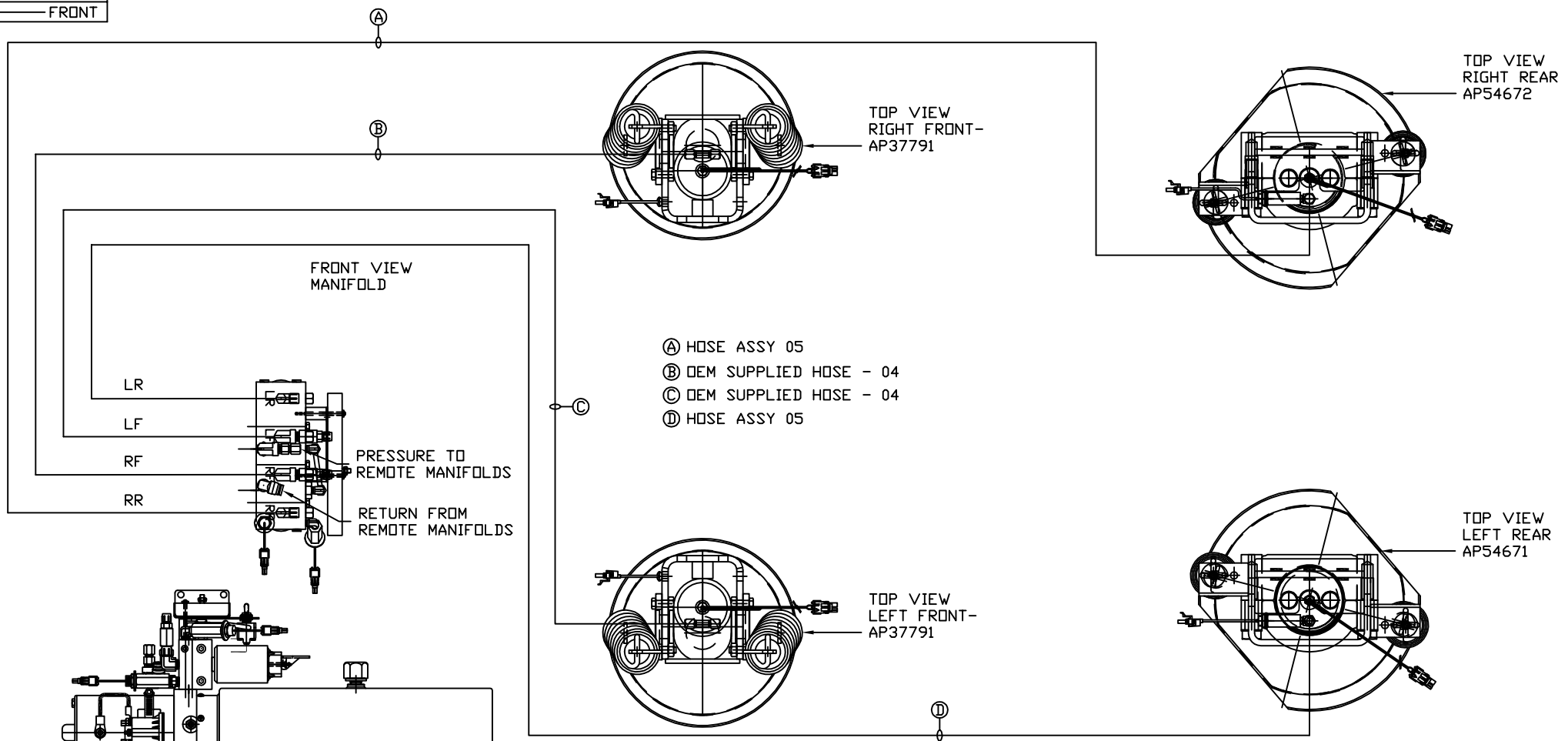


ORIENTATION
← FRONT



LOCATION AND ORIENTATION OF PUMP/MANIFOLD ASSEMBLY WILL DIFFER DEPENDING UPON D.E.M.

NOTE: INSTALLATION MUST CONFORM TO GOOD SHOP PRACTICES, SAE STANDARDS, RVIA STANDARDS, AND OTHER APPLICABLE STANDARDS.

LEVELING SYSTEM: AP54891

		HWH I-80 EXIT 267 SOUTH RT 1 MOSCOW, IOWA 52760	
		SCALE 1:6	DATE 02DEC15
		DRAWN BY .	
		HYD CONN DIAGRAM	
NO.	DATE	REVISION	
		THE INFORMATION DISCLOSED ON THIS DRAWING IS CONFIDENTIAL AND MUST NOT BE DISCLOSED OR USED IN ANY MANNER WHICH WILL BE DETRIMENTAL TO THE HWH CORPORATION	
		NEWMAR	DRAWING NUMBER MP70919 A/B

- Ⓐ HOSE ASSY 04
PRESSURE
- Ⓑ .375" OD NYLON TUBING
RETURN
- Ⓒ HOSE ASSY 03
ROD END - ALWAYS PRESSURIZED
HOSES MUST BE HIGH PRESSURE
HOSES OF EQUAL LENGTH AND DIAMETER

- Ⓓ HOSE ASSY 04
CAP END - HOSES MUST MAINTAIN
EQUAL LENGTH AND DIAMETER

- Ⓘ HOSE ASSY 04
CAP END (LIFT)

- Ⓝ HOSE ASSY 03
CAP END (ROOM)

- Ⓚ HOSE ASSY 03
CAP END (ROOM)

- Ⓛ HOSE ASSY 03 - ROD END (LIFT)
ALWAYS PRESSURIZED

- Ⓜ HOSE ASSY 03
CAP END (LIFT)

- Ⓝ HOSE ASSY 04 - ROD END (LIFT)
ALWAYS PRESSURIZED

- Ⓞ HOSE ASSY 03 - ROD END (LIFT)
ALWAYS PRESSURIZED

- Ⓟ HOSE ASSY 03
CAP END (LIFT)

NOTE: GENERIC VIEWS FOR CLARITY. CYLINDERS MAY BE REVERSED

NOTE: TO ROOM #2 RETURN OR
PLUG THIS END WITH PLUG FROM PUMP.

ROOM MECHANISM # AP54864
146 1/4" PLATFORM ODS

CYL ASSY (PART OF
PLATFORM ASSY.)
2 USED

NOTES:

VIEW SHOWN FROM INSIDE LOOKING
OUTWARD.

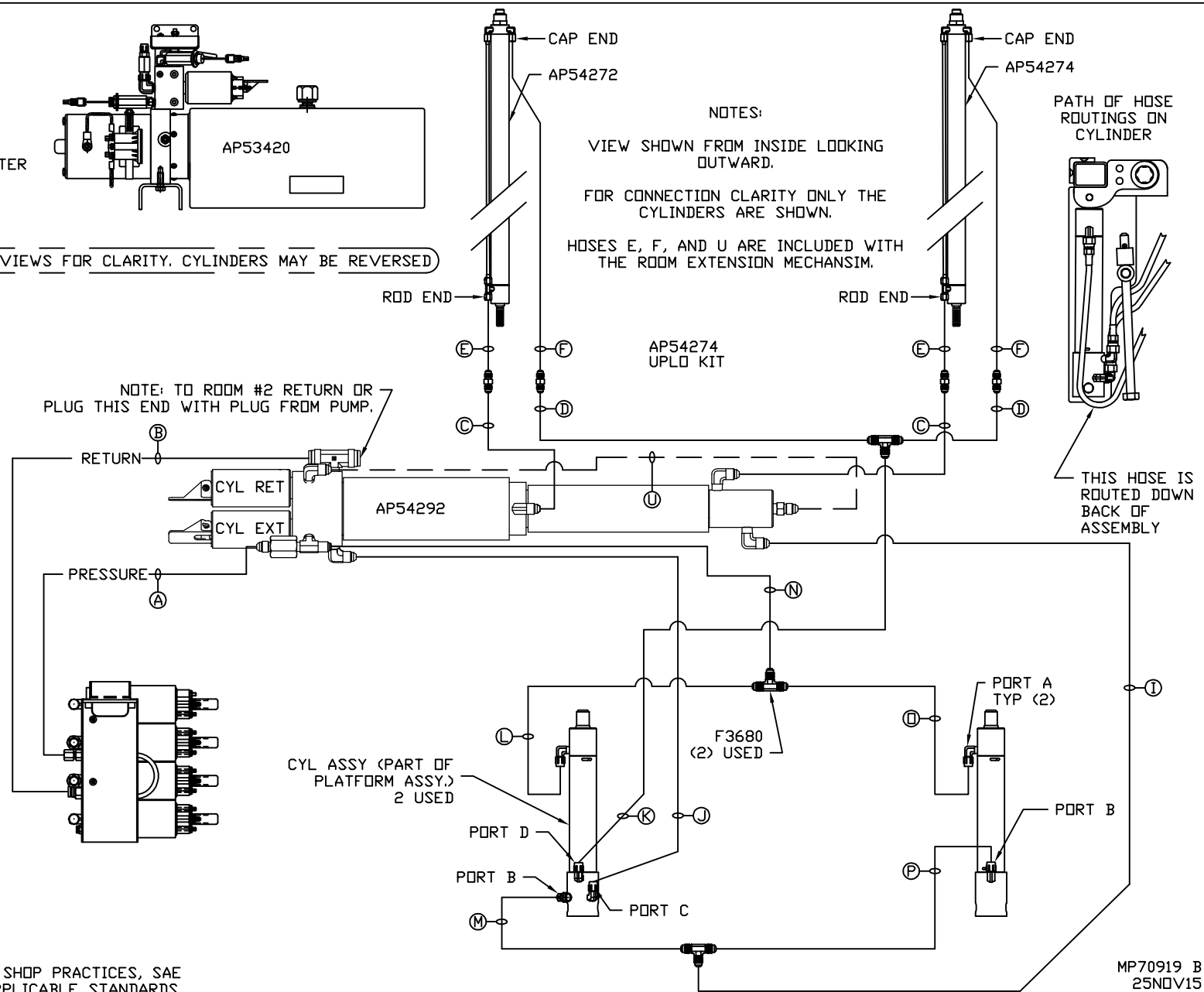
FOR CONNECTION CLARITY ONLY THE
CYLINDERS ARE SHOWN.

HOSES E, F, AND U ARE INCLUDED WITH
THE ROOM EXTENSION MECHANISM.

AP54274
UPLD KIT

PATH OF HOSE
ROUTINGS ON
CYLINDER

THIS HOSE IS
ROUTED DOWN
BACK OF
ASSEMBLY



NOTE: INSTALLATION MUST CONFORM TO GOOD SHOP PRACTICES, SAE
STANDARDS, RVIA STANDARDS, AND OTHER APPLICABLE STANDARDS.

MP70919 B
25NOV15