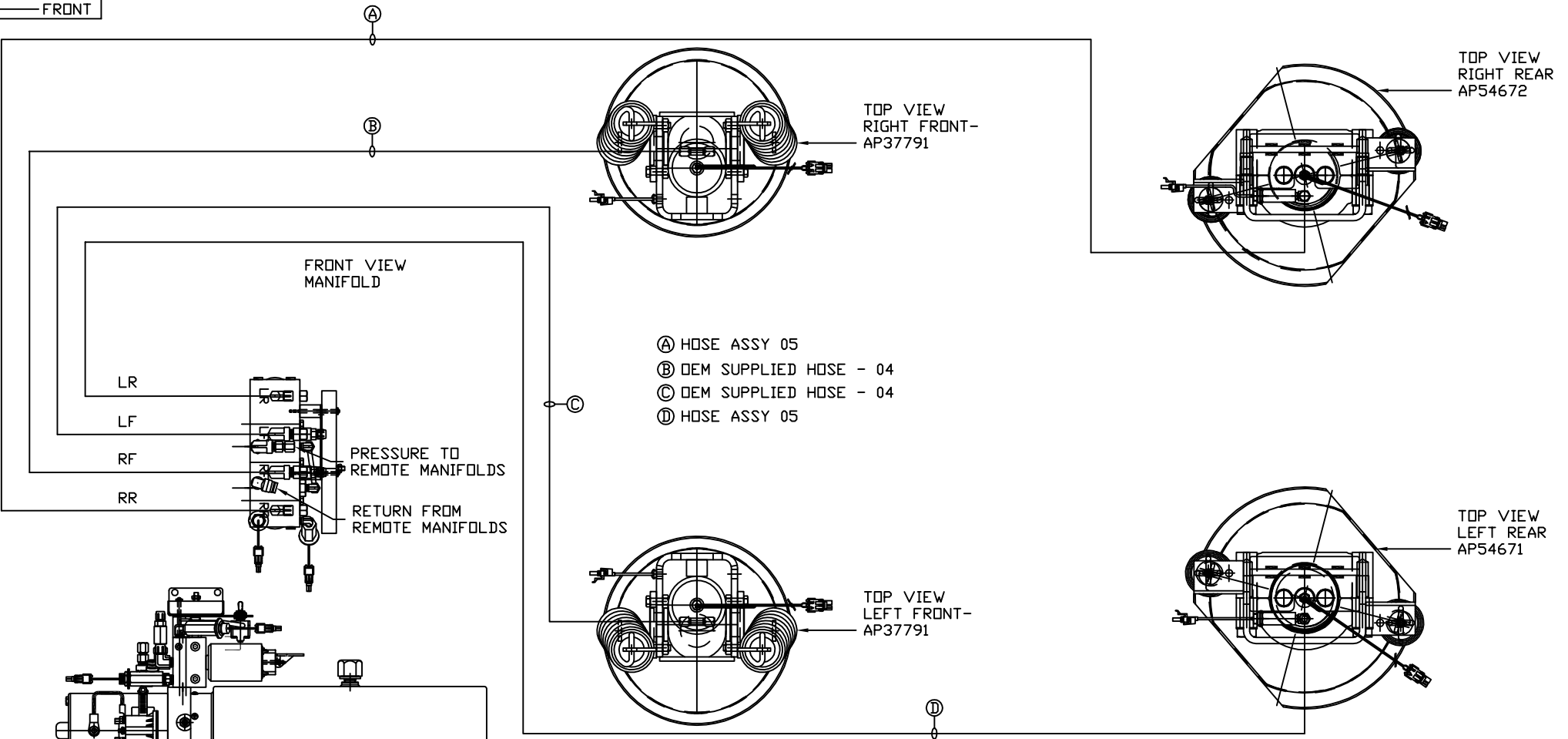


ORIENTATION
← FRONT



SIDE VIEW PUMP/MANIFOLD-AP53420

LOCATION AND ORIENTATION OF PUMP/MANIFOLD ASSEMBLY WILL DIFFER DEPENDING UPON D.E.M.

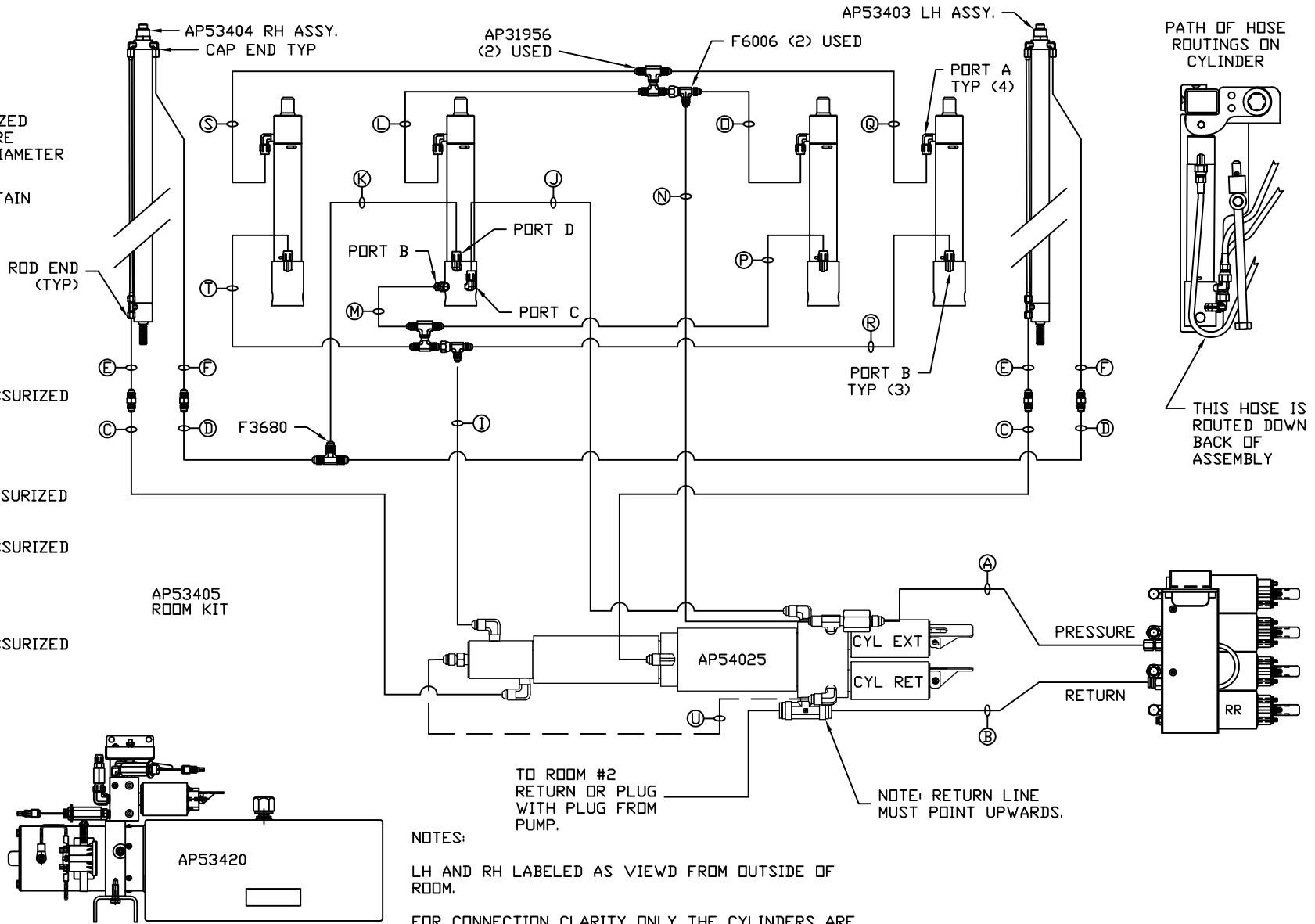
NOTE: INSTALLATION MUST CONFORM TO GOOD SHOP PRACTICES, SAE STANDARDS, RVIA STANDARDS, AND OTHER APPLICABLE STANDARDS.

LEVELING SYSTEM: AP54891

		HWH I-80 EXIT 267 SOUTH RT 1 MOSCOW, IOWA 52760	
		SCALE 1:6	DATE 02DEC15
		DRAWN BY .	
		HYD CONN DIAGRAM	
NO.	DATE	REVISION	
		THE INFORMATION DISCLOSED ON THIS DRAWING IS CONFIDENTIAL AND MUST NOT BE DISCLOSED OR USED IN ANY MANNER WHICH WILL BE DETRIMENTAL TO THE HWH CORPORATION	
		NEWMAR	DRAWING NUMBER MP70922 A/B

- Ⓐ AP HOSE ASSY 04
PRESSURE
- Ⓑ P .375" OD NYLON TUBING
RETURN
- Ⓒ AP HOSE ASSY 03
ROD END - ALWAYS PRESSURIZED
HOSES MUST BE HIGH PRESSURE
AND OF EQUAL LENGTH AND DIAMETER
- Ⓓ AP HOSE ASSY 04
CAP END - HOSES MUST MAINTAIN
EQUAL LENGTH AND DIAMETER
- Ⓚ AP HOSE ASSY 04
CAP END (LIFT) WAS AP4060
- Ⓛ AP HOSE ASSY 04
CAP END (ROOM)
- Ⓜ AP HOSE ASSY 03
CAP END (ROOM)
- Ⓝ AP HOSE ASSY 03
ROD END (LIFT) ALWAYS PRESSURIZED
- Ⓞ AP HOSE ASSY 04
CAP END (LIFT)
- Ⓟ AP HOSE ASSY 03
ROD END (LIFT) ALWAYS PRESSURIZED
- Ⓠ AP HOSE ASSY
ROD END (LIFT) ALWAYS PRESSURIZED
- Ⓡ AP HOSE ASSY 04
CAP END (LIFT)
- Ⓢ AP HOSE ASSY 03
ROD END (LIFT)
ALWAYS PRESSURIZED
- Ⓣ AP HOSE ASSY 04
CAP END (LIFT)

ROOM MECHANISM # AP54780
302 3/4" PLATFORM ODS



NOTES:

LH AND RH LABELED AS VIEWD FROM OUTSIDE OF
ROOM.

FOR CONNECTION CLARITY ONLY THE CYLINDERS ARE
SHOWN.

HOSES E, F, AND U ARE INCLUDED WITH THE ROOM
EXTENSION MECHANISM.

NOTE: INSTALLATION MUST CONFORM TO GOOD SHOP PRACTICES, SAE
STANDARDS, RVIA STANDARDS, AND OTHER APPLICABLE STANDARDS.

MP70922 B
25NOV15