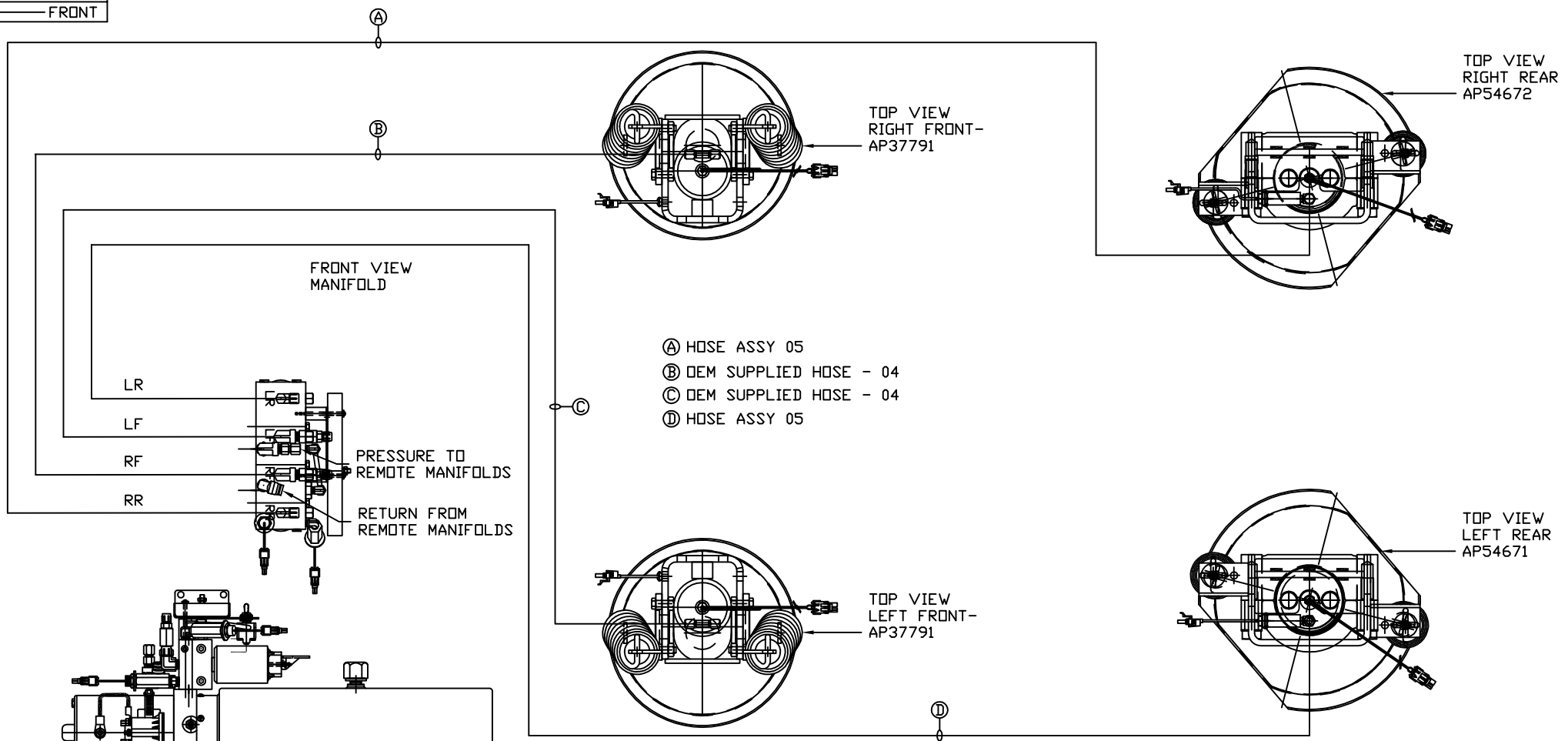
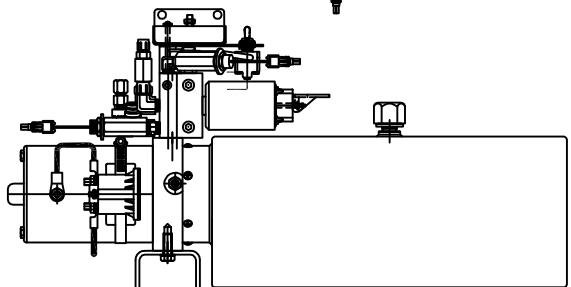


ORIENTATION
← FRONT



- Ⓐ HOSE ASSY 05
- Ⓑ DEM SUPPLIED HOSE - 04
- Ⓒ DEM SUPPLIED HOSE - 04
- Ⓓ HOSE ASSY 05



SIDE VIEW PUMP/MANIFOLD-AP53420

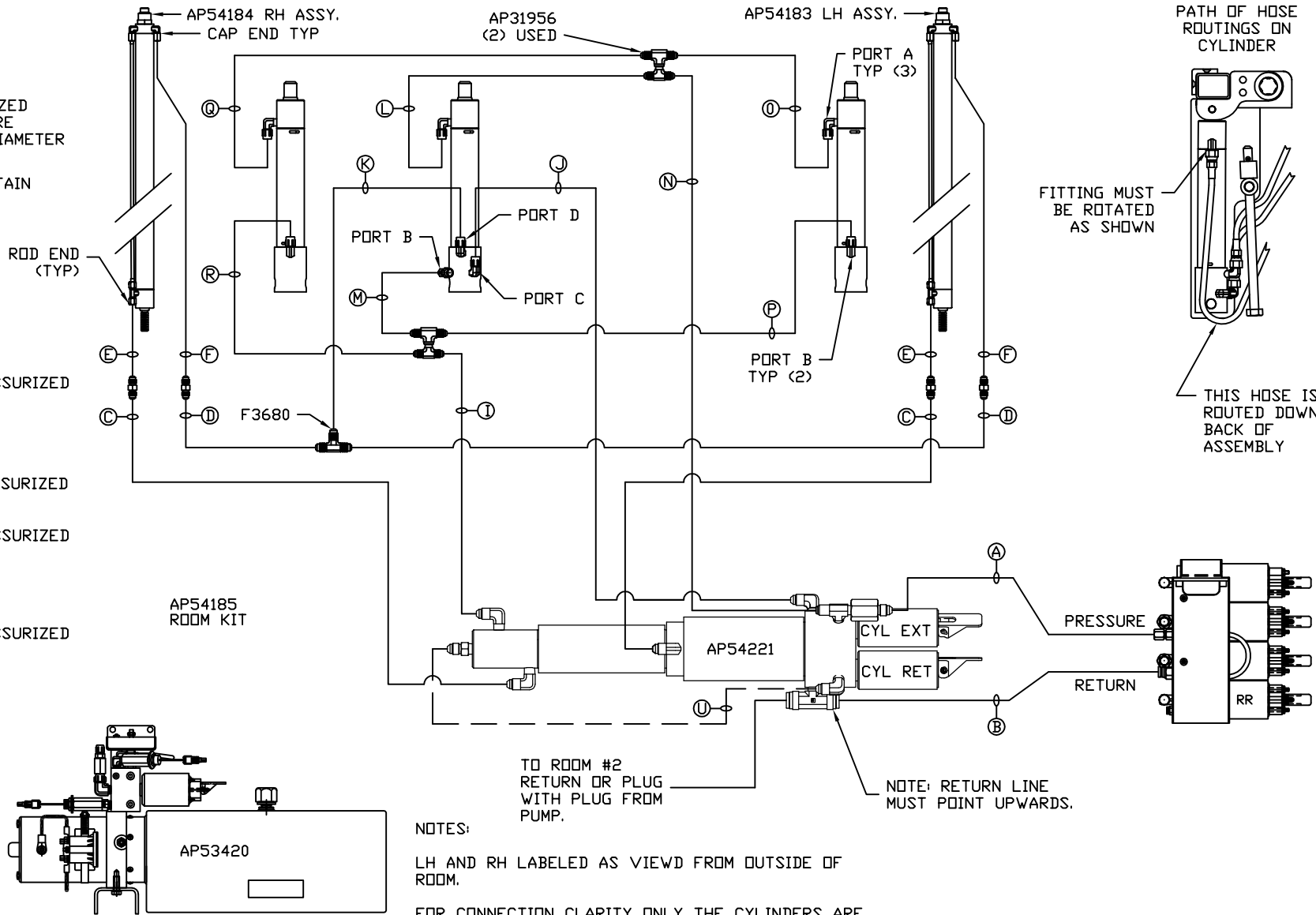
LOCATION AND ORIENTATION OF PUMP/MANIFOLD ASSEMBLY WILL DIFFER DEPENDING UPON D.E.M.

NOTE: INSTALLATION MUST CONFORM TO GOOD SHOP PRACTICES, SAE STANDARDS, RVIA STANDARDS, AND OTHER APPLICABLE STANDARDS.

LEVELING SYSTEM: AP54891

		HWH I-80 EXIT 267 SOUTH RT 1 MOSCOW, IOWA 52760	
		SCALE 1:6	DATE 02DEC15
		DRAWN BY .	
HYD CONN DIAGRAM			
NO.	DATE	REVISION	
THE INFORMATION DISCLOSED ON THIS DRAWING IS CONFIDENTIAL AND MUST NOT BE DISCLOSED OR USED IN ANY MANNER WHICH WILL BE DETRIMENTAL TO THE HWH CORPORATION		DRAWING NUMBER	
NEWMAR		MP70923 A/B	

- Ⓐ AP HOSE ASSY 04
PRESSURE
- Ⓑ P .375" OD NYLON TUBING
RETURN
- Ⓒ AP HOSE ASSY 03
ROD END - ALWAYS PRESSURIZED
HOSES MUST BE HIGH PRESSURE
AND OF EQUAL LENGTH AND DIAMETER
- Ⓓ AP HOSE ASSY 04
CAP END - HOSES MUST MAINTAIN
EQUAL LENGTH AND DIAMETER
- Ⓛ AP HOSE ASSY 04
CAP END (LIFT) WAS AP4060
- Ⓜ AP HOSE ASSY 04
CAP END (ROOM)
- Ⓚ AP HOSE ASSY 03
CAP END (ROOM)
- Ⓛ AP HOSE ASSY 03
ROD END (LIFT) ALWAYS PRESSURIZED
- Ⓜ AP HOSE ASSY 04
CAP END (LIFT)
- Ⓝ AP HOSE ASSY 03
ROD END (LIFT) ALWAYS PRESSURIZED
- Ⓞ AP HOSE ASSY 03
ROD END (LIFT) ALWAYS PRESSURIZED
- Ⓟ AP HOSE ASSY 04
CAP END (LIFT)
- Ⓠ AP HOSE ASSY 03
ROD END (LIFT) ALWAYS PRESSURIZED
- Ⓡ AP HOSE ASSY 04
CAP END (LIFT)



NOTES:
LH AND RH LABELED AS VIEWD FROM OUTSIDE OF
ROOM.
FOR CONNECTION CLARITY ONLY THE CYLINDERS ARE
SHOWN.

HOSES E, F, AND U ARE INCLUDED WITH THE ROOM
EXTENSION MECHANISM.

NOTE: INSTALLATION MUST CONFORM TO GOOD SHOP PRACTICES, SAE
STANDARDS, RVIA STANDARDS, AND OTHER APPLICABLE STANDARDS.