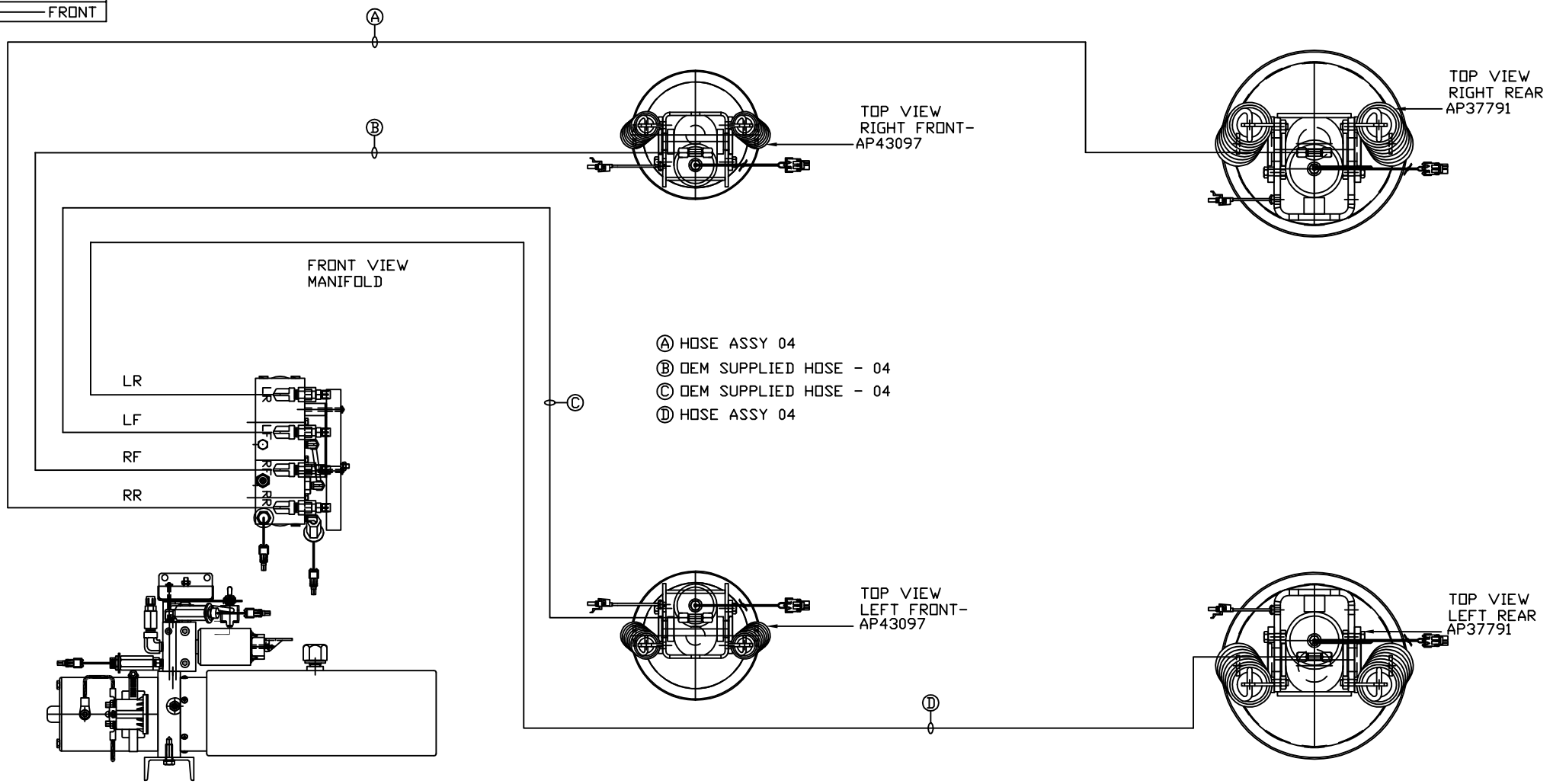


ORIENTATION  
← FRONT



SIDE VIEW PUMP/MANIFOLD-AP54558  
LOCATION AND ORIENTATION OF PUMP/MANIFOLD ASSEMBLY WILL DIFFER DEPENDING UPON D.E.M.

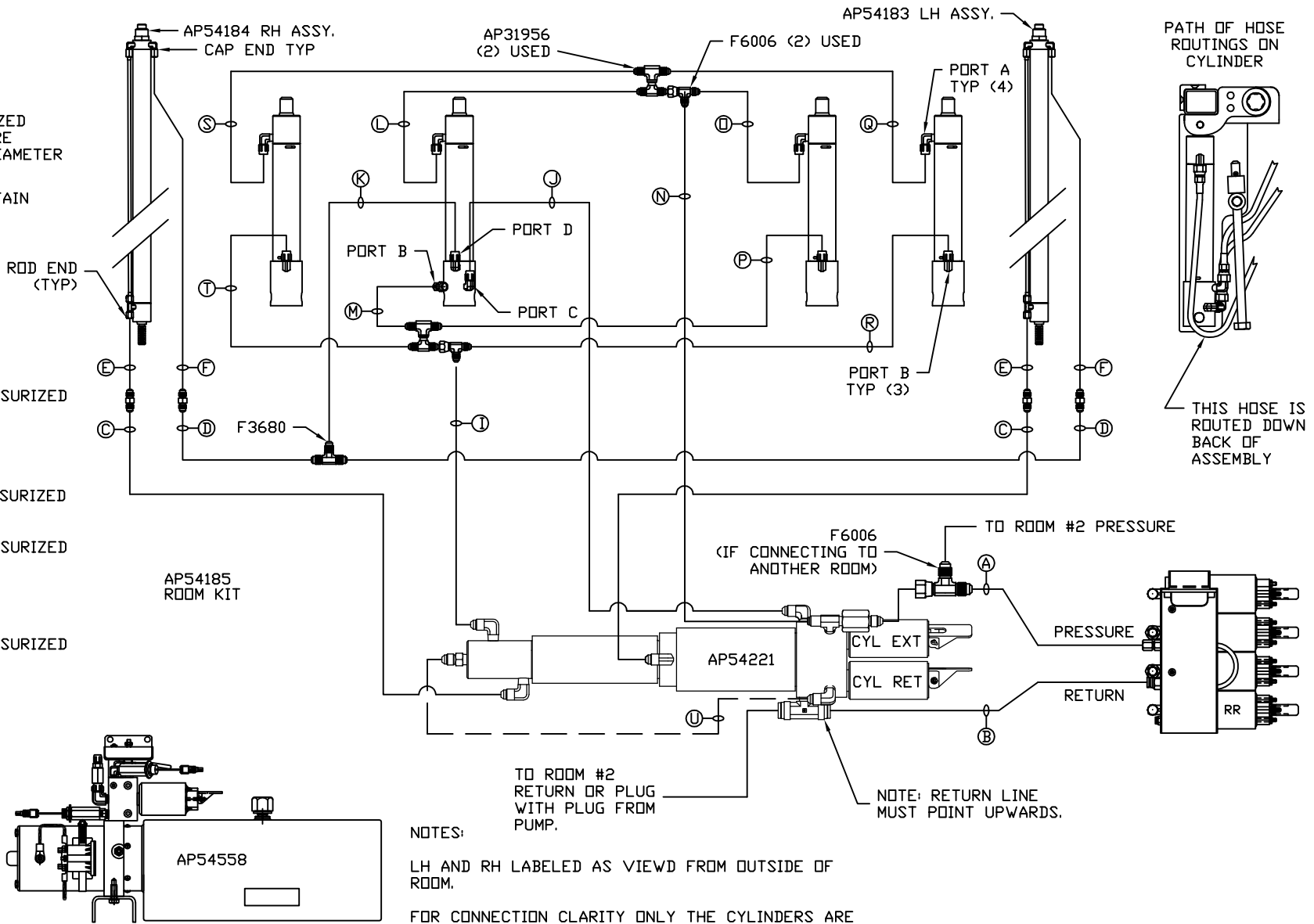
NOTE: INSTALLATION MUST CONFORM TO GOOD SHOP PRACTICES, SAE STANDARDS, RVIA STANDARDS, AND OTHER APPLICABLE STANDARDS.

LEVELING SYSTEM: AP54291

		HWH I-80 EXIT 267 SOUTH RT 1 MOSCOW, IOWA 52760	
		SCALE 1:6	DATE 24NOV15
		DRAWN BY .	
NO.		REVISION	
DATE			
		HYD CONN DIAGRAM	
		NEWMAR	DRAWING NUMBER MP70924 A/C
<p>THE INFORMATION DISCLOSED ON THIS DRAWING IS CONFIDENTIAL AND MUST NOT BE DISCLOSED OR USED IN ANY MANNER WHICH WILL BE DETRIMENTAL TO THE HWH CORPORATION</p>			

- Ⓐ AP HOSE ASSY 04  
PRESSURE
- Ⓑ P .375" OD NYLON TUBING  
RETURN
- Ⓒ AP HOSE ASSY 03  
ROD END - ALWAYS PRESSURIZED  
HOSES MUST BE HIGH PRESSURE  
AND OF EQUAL LENGTH AND DIAMETER
- Ⓓ AP HOSE ASSY 04  
CAP END - HOSES MUST MAINTAIN  
EQUAL LENGTH AND DIAMETER
- Ⓚ AP HOSE ASSY 04  
CAP END (LIFT) WAS AP4060
- Ⓛ AP HOSE ASSY 04  
CAP END (ROOM)
- Ⓜ AP HOSE ASSY 03  
CAP END (ROOM)
- Ⓝ AP HOSE ASSY 03  
ROD END (LIFT) ALWAYS PRESSURIZED
- Ⓞ AP HOSE ASSY 04  
CAP END (LIFT)
- Ⓟ AP HOSE ASSY 03  
ROD END (LIFT) ALWAYS PRESSURIZED
- Ⓠ AP HOSE ASSY 04  
CAP END (LIFT)
- Ⓡ AP HOSE ASSY 03  
ROD END (LIFT) ALWAYS PRESSURIZED
- Ⓢ AP HOSE ASSY 04  
CAP END (LIFT)
- Ⓣ AP HOSE ASSY 03  
ROD END (LIFT)  
ALWAYS PRESSURIZED
- Ⓤ AP HOSE ASSY 04  
CAP END (LIFT)

ROOM MECHANISM # AP54848  
299 3/8" PLATFORM ODS  
ROOM MECHANISM # AP54814  
146 1/4" PLATFORM DS



NOTES:

LH AND RH LABELED AS VIEWD FROM OUTSIDE OF ROOM.

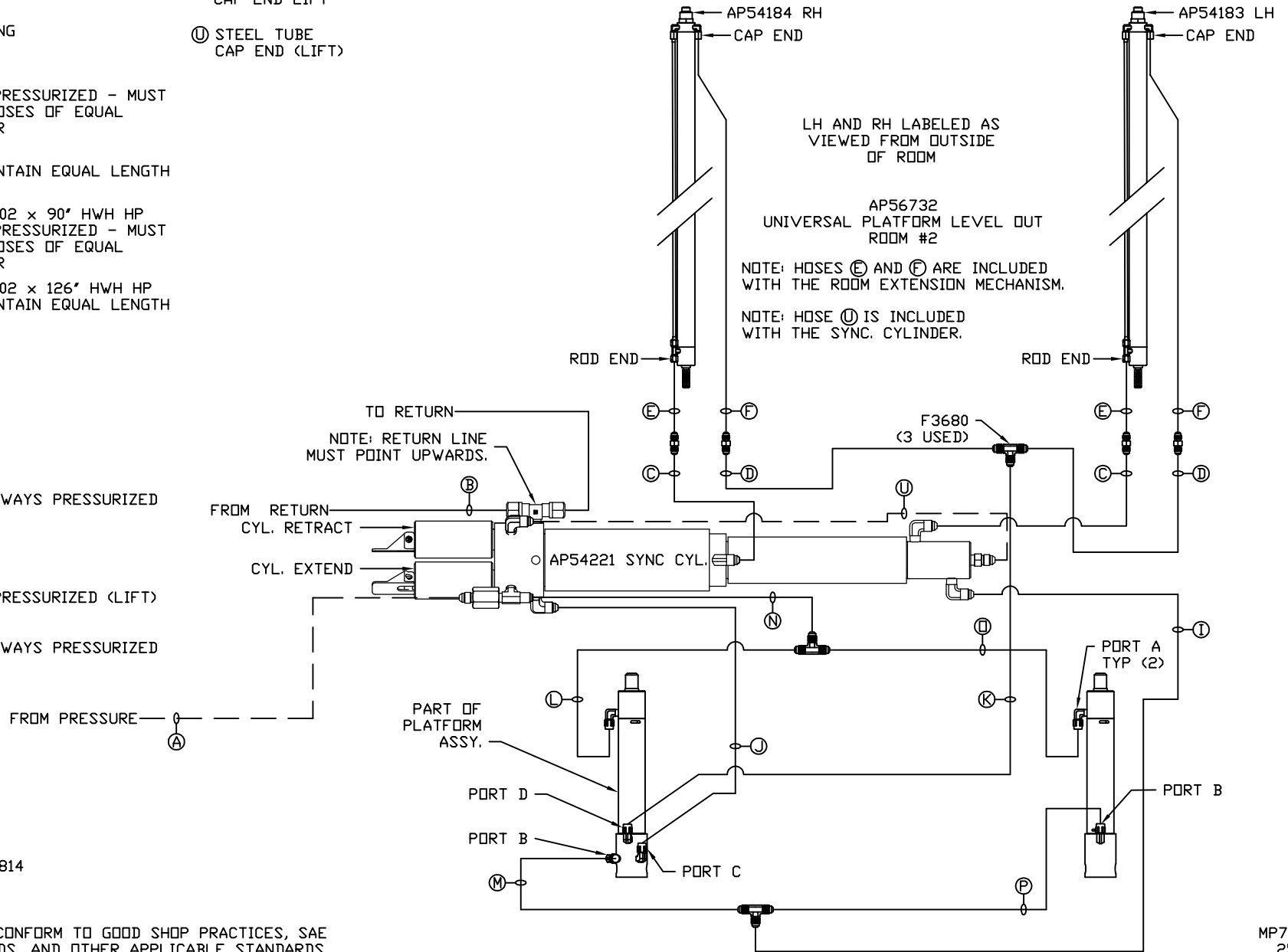
FOR CONNECTION CLARITY ONLY THE CYLINDERS ARE SHOWN.

HOSES E, F, AND U ARE INCLUDED WITH THE ROOM EXTENSION MECHANISM.

NOTE: INSTALLATION MUST CONFORM TO GOOD SHOP PRACTICES, SAE STANDARDS, RVIA STANDARDS, AND OTHER APPLICABLE STANDARDS.

- Ⓐ HOSE ASSY 04  
PRESSURE
- Ⓑ .375" OD NYLON TUBING  
RETURN
- Ⓒ HOSE ASSY 03  
ROD END - ALWAYS PRESSURIZED - MUST  
BE HIGH PRESSURE HOSES OF EQUAL  
LENGTH AND DIAMETER
- Ⓓ HOSE ASSY 04  
CAP END - MUST MAINTAIN EQUAL LENGTH  
AND DIAMETER
- Ⓔ AP24638 HOSE ASSY 02 x 90' HWH HP  
ROD END - ALWAYS PRESSURIZED - MUST  
BE HIGH PRESSURE HOSES OF EQUAL  
LENGTH AND DIAMETER
- Ⓕ AP24643 HOSE ASSY 02 x 126' HWH HP  
CAP END - MUST MAINTAIN EQUAL LENGTH  
AND DIAMETER
- Ⓖ HOSE ASSY 04  
CAP END (LIFT)
- Ⓙ HOSE ASSY 03  
CAP END (ROOM)
- Ⓚ HOSE ASSY 03  
CAP END (ROOM)
- Ⓛ HOSE ASSY 03  
ROD END (LIFT) - ALWAYS PRESSURIZED
- Ⓜ HOSE ASSY 03  
CAP END (LIFT)
- Ⓝ HOSE ASSY 04  
ROD END - ALWAYS PRESSURIZED (LIFT)
- Ⓟ HOSE ASSY 03  
ROD END (LIFT) - ALWAYS PRESSURIZED

- Ⓟ HOSE ASSY 03  
CAP END LIFT
- Ⓠ STEEL TUBE  
CAP END (LIFT)



ROOM MECHANISM # AP54814  
146 1/4 PLATFORM DS

NOTE: INSTALLATION MUST CONFORM TO GOOD SHOP PRACTICES, SAE  
STANDARDS, RVIA STANDARDS, AND OTHER APPLICABLE STANDARDS.

MP70924 C  
25NOV15