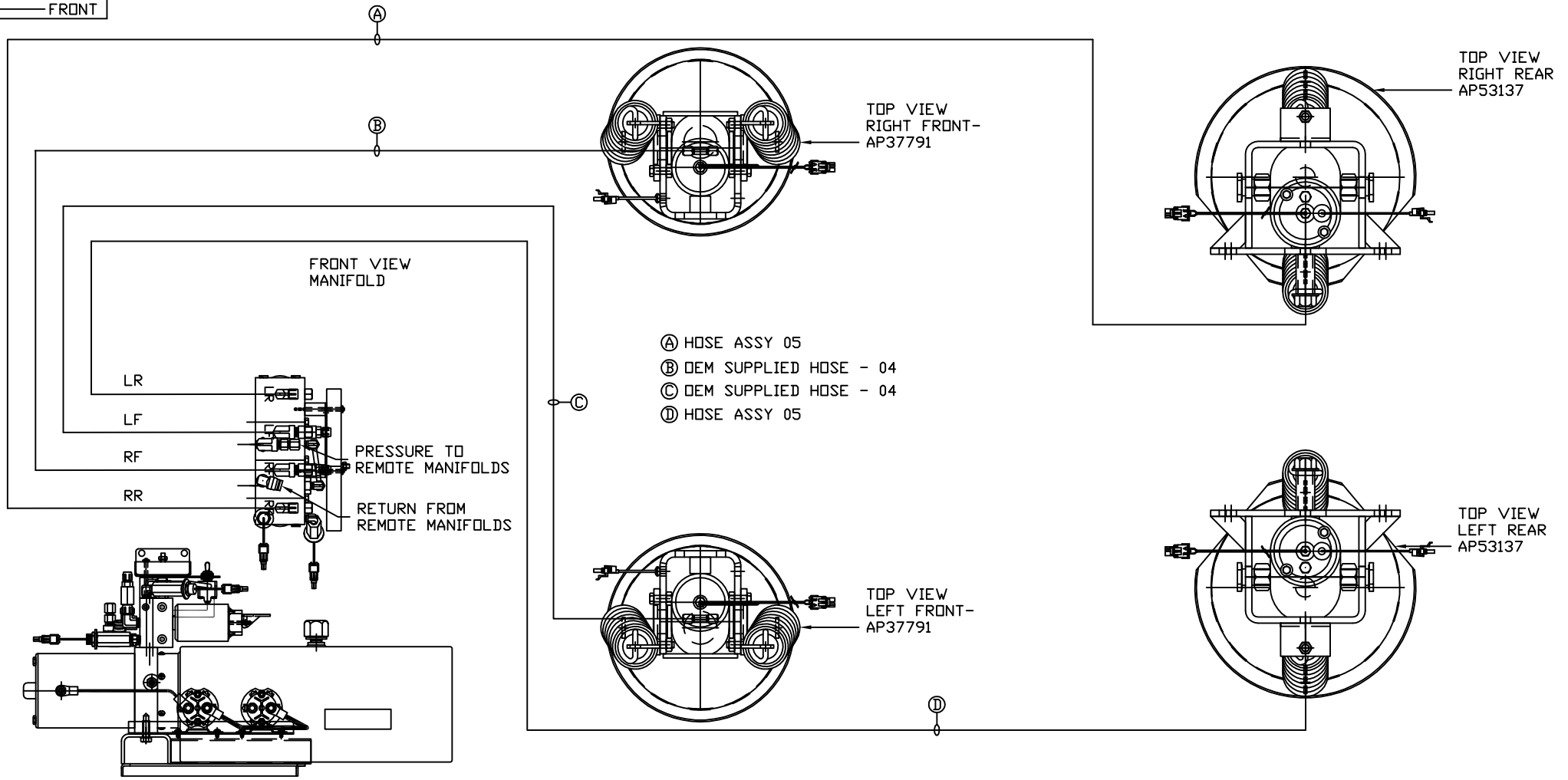


ORIENTATION
← FRONT



SIDE VIEW PUMP/MANIFOLD-AP54557

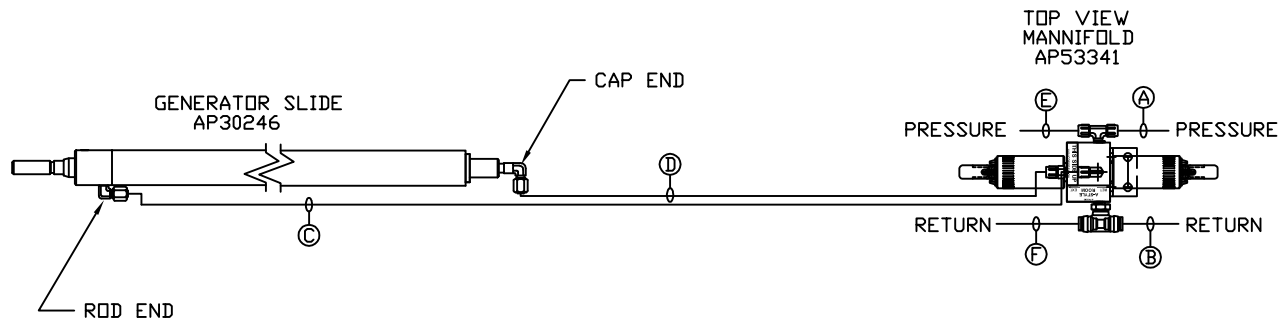
LOCATION AND ORIENTATION OF PUMP/MANIFOLD ASSEMBLY WILL DIFFER DEPENDING UPON D.E.M.

NOTE: INSTALLATION MUST CONFORM TO GOOD SHOP PRACTICES, SAE STANDARDS, RVIA STANDARDS, AND OTHER APPLICABLE STANDARDS.

LEVELING SYSTEM AP54289 W/ BRACKET.

LEVELING SYSTEM AP54893 W/D BRACKET.

		HWH		I-80 EXIT 267 SOUTH RT 1 MOSCOW, IOWA 52760	
		SCALE 1:6	DATE 02DEC15	DRAWN BY .	
		HYD CONN DIAGRAM			
		NEWMAR		DRAWING NUMBER MP70936 A/D	
NO.	DATE	REVISION			
THE INFORMATION DISCLOSED ON THIS DRAWING IS CONFIDENTIAL AND MUST NOT BE DISCLOSED OR USED IN ANY MANNER WHICH WILL BE DETRIMENTAL TO THE HWH CORPORATION					

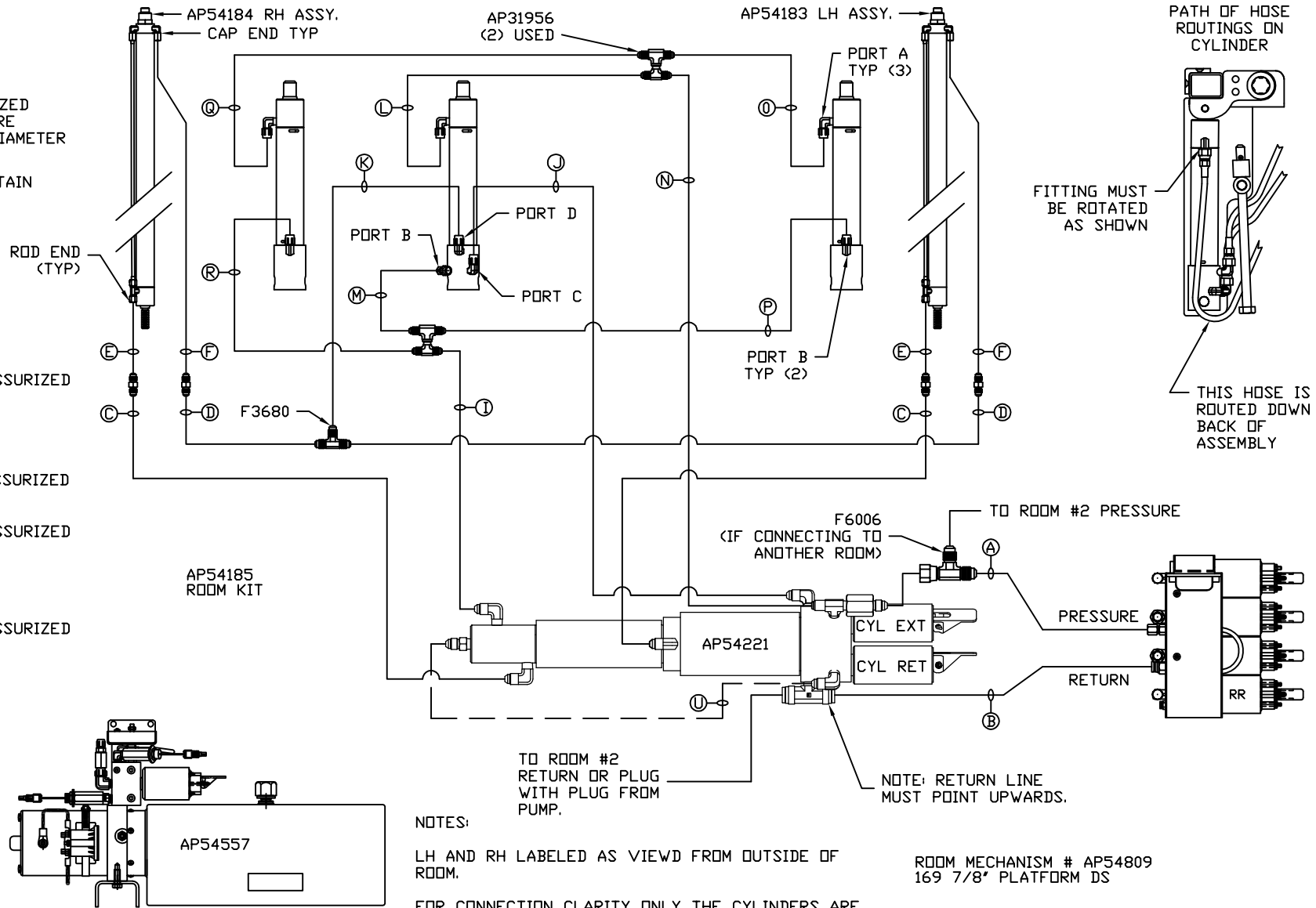


- (A) HOSE ASSY 04
PRESSURE
- (B) .375" OD NYLON TUBING
RETURN
- (C) HOSE ASSY 04
ROD END - ALWAYS PRESSURIZED
- (D) HOSE ASSY 04
CAP END
- (E) HOSE ASSY 04
PRESSURE
- (F) .375" OD NYLON TUBING
RETURN

NOTE: INSTALLATION MUST CONFORM TO GOOD SHOP PRACTICES, SAE STANDARDS, RVIA STANDARDS, AND OTHER APPLICABLE STANDARDS.

MP70936 B
02DEC15

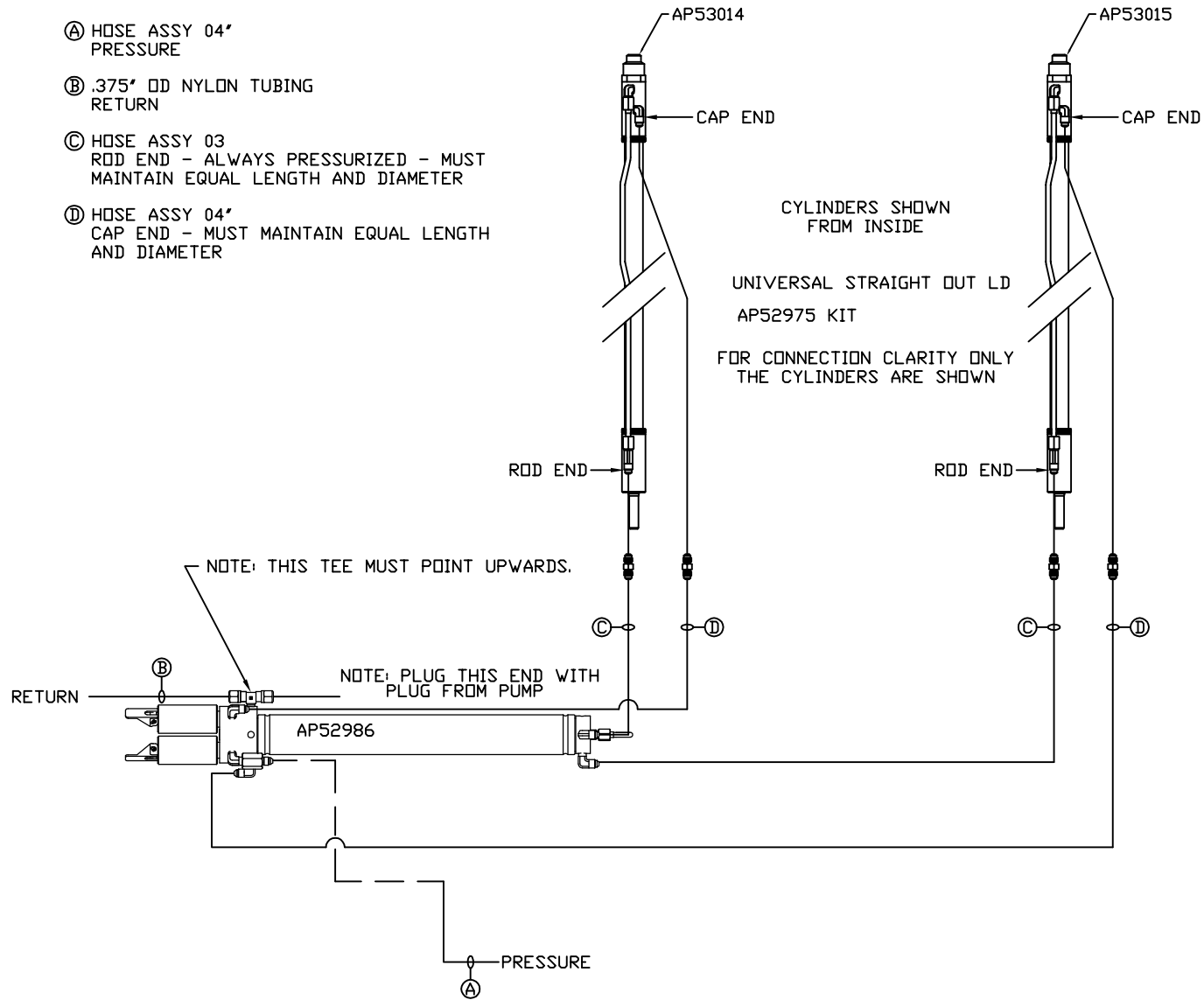
- Ⓐ AP HOSE ASSY 04
PRESSURE
- Ⓑ P .375" OD NYLON TUBING
RETURN
- Ⓒ AP HOSE ASSY 03
ROD END - ALWAYS PRESSURIZED
HOSES MUST BE HIGH PRESSURE
AND OF EQUAL LENGTH AND DIAMETER
- Ⓓ AP HOSE ASSY 04
CAP END - HOSES MUST MAINTAIN
EQUAL LENGTH AND DIAMETER
- Ⓚ AP HOSE ASSY 04
CAP END (LIFT) WAS AP4060
- Ⓛ AP HOSE ASSY 04
CAP END (ROOM)
- Ⓜ AP HOSE ASSY 03
CAP END (ROOM)
- Ⓝ AP HOSE ASSY 03
ROD END (LIFT) ALWAYS PRESSURIZED
- Ⓟ AP HOSE ASSY 04
CAP END (LIFT)
- Ⓠ AP HOSE ASSY 03
ROD END (LIFT) ALWAYS PRESSURIZED
- Ⓡ AP HOSE ASSY 03
ROD END (LIFT) ALWAYS PRESSURIZED
- Ⓢ AP HOSE ASSY 04
CAP END (LIFT)
- Ⓣ AP HOSE ASSY 03
ROD END (LIFT) ALWAYS PRESSURIZED
- Ⓤ AP HOSE ASSY 04
CAP END (LIFT)



NOTES:
LH AND RH LABELED AS VIEWD FROM OUTSIDE OF ROOM.
FOR CONNECTION CLARITY ONLY THE CYLINDERS ARE SHOWN.
HOSES E, F, AND U ARE INCLUDED WITH THE ROOM EXTENSION MECHANISM.

NOTE: INSTALLATION MUST CONFORM TO GOOD SHOP PRACTICES, SAE STANDARDS, RVIA STANDARDS, AND OTHER APPLICABLE STANDARDS.

- Ⓐ HOSE ASSY 04' PRESSURE
- Ⓑ .375" OD NYLON TUBING RETURN
- Ⓒ HOSE ASSY 03' ROD END - ALWAYS PRESSURIZED - MUST MAINTAIN EQUAL LENGTH AND DIAMETER
- Ⓓ HOSE ASSY 04' CAP END - MUST MAINTAIN EQUAL LENGTH AND DIAMETER



NOTE: INSTALLATION MUST CONFORM TO GOOD SHOP PRACTICES, SAE STANDARDS, RVIA STANDARDS, AND OTHER APPLICABLE STANDARDS.

MP70936 D
02DEC15