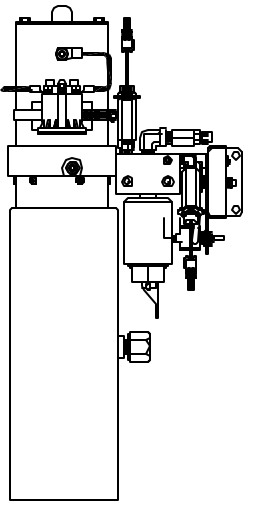
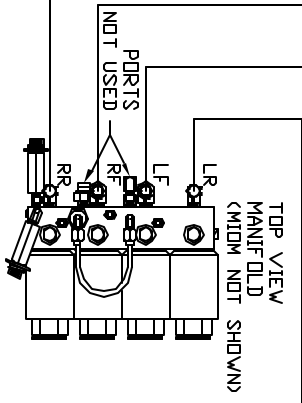
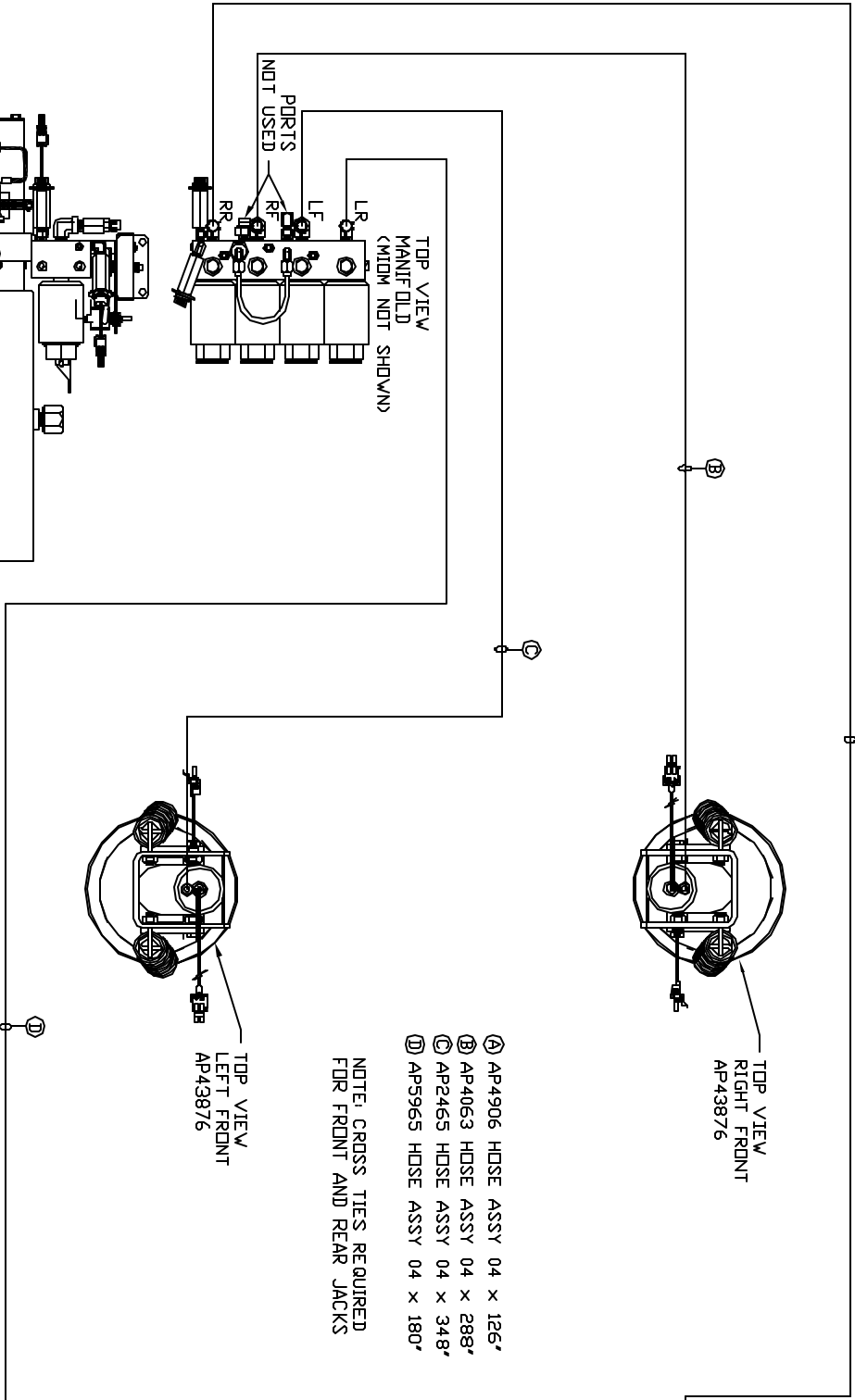
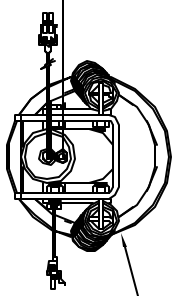


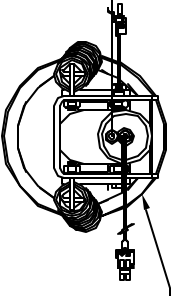
ORIENTATION
FRONT



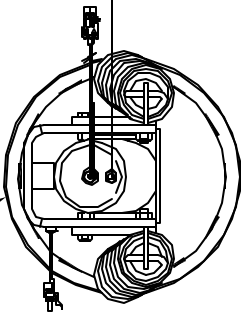
SIDE VIEW PUMP/MANIFOLD-AP55132
LOCATION AND ORIENTATION OF
PUMP/MANIFOLD ASSEMBLY WILL
DIFFER DEPENDING UPON DEM.



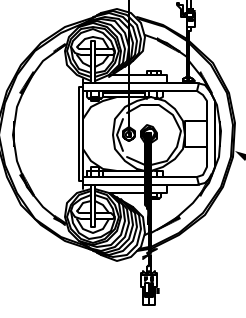
TOP VIEW
RIGHT FRONT
AP43876



TOP VIEW
LEFT FRONT
AP43876



TOP VIEW
RIGHT REAR
AP38147



TOP VIEW
LEFT REAR
AP38147

- Ⓐ AP4906 HOSE ASSY 04 x 126'
- Ⓑ AP4063 HOSE ASSY 04 x 288'
- Ⓒ AP2465 HOSE ASSY 04 x 348'
- Ⓓ AP5965 HOSE ASSY 04 x 180'

NOTE: CROSS TIES REQUIRED
FOR FRONT AND REAR JACKS

NOTE: INSTALLATION MUST CONFORM TO GOOD SHOP PRACTICES, SAE STANDARDS, RVIA STANDARDS, AND OTHER APPLICABLE STANDARDS.

LEVELING SYSTEM: AP55589

NO.	DATE	REVISION

THE INFORMATION DISCLOSED IN THIS DRAWING IS CONFIDENTIAL AND MUST NOT BE DISCLOSED OR USED IN ANY MANNER WHICH WILL BE DETRIMENTAL TO THE RVH CORPORATION

HWH 1-80 EXIT 267 SOUTH
RT 1 MOSCOV, IOWA 52760

SCALE 1:6 DATE 10DEC15 DRAWN BY .

HYD CONN DIAGRAM

ALEPH GROUP

DRAWING NUMBER MP70956