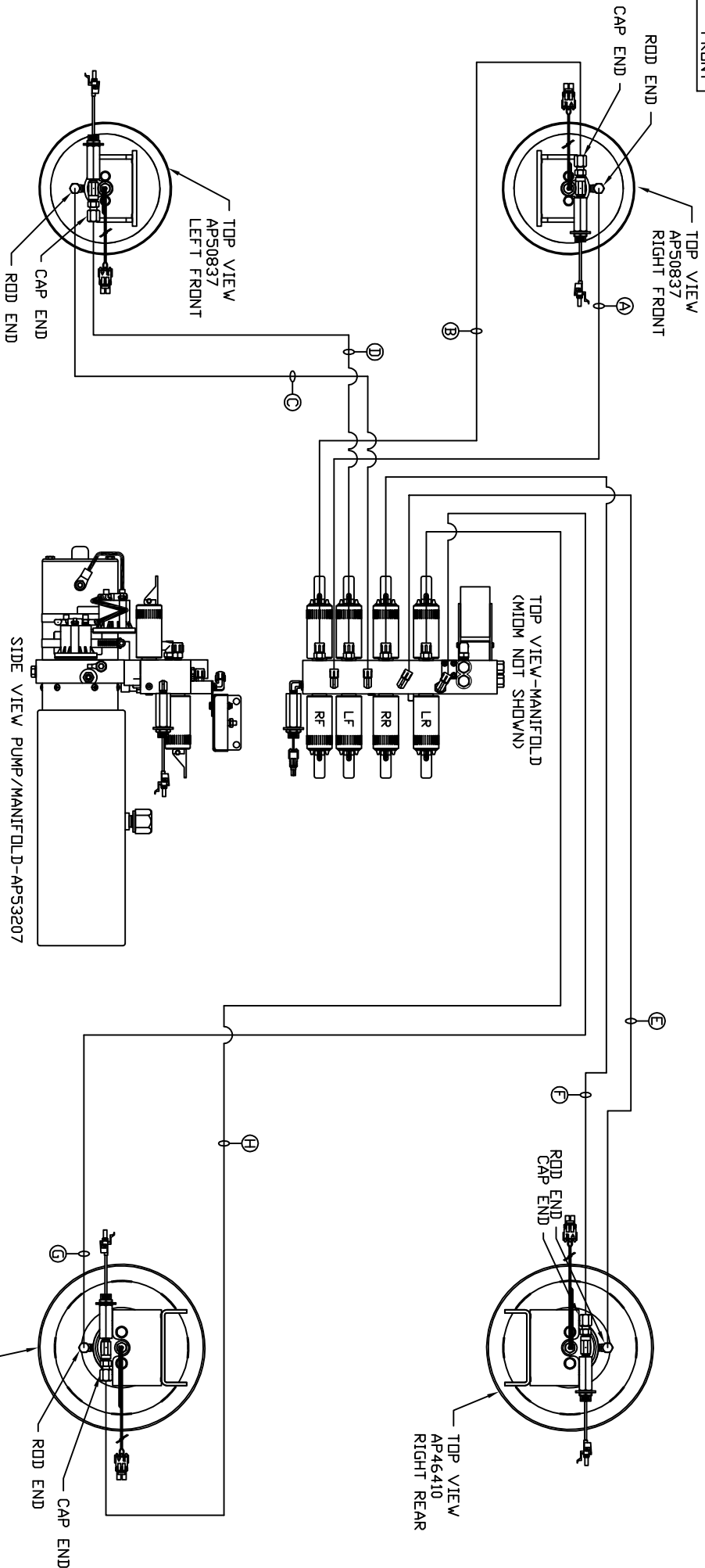


ORIENTATION  
FRONT



LOCATION AND ORIENTATION OF PUMP/MANIFOLD ASSEMBLY WILL DIFFER DEPENDING UPON O.E.M.

- Ⓐ AP5352 HOSE ASSY 04 x 96" - RF ROD END
- Ⓑ AP42051 HOSE ASSY 05 x 84" - RF CAP END
- Ⓒ AP4728 HOSE ASSY 04 x 54" - LF ROD END
- Ⓓ AP17475 HOSE ASSY 05 x 48" - LF CAP END
- Ⓔ AP4669 HOSE ASSY 04 x 408" - RR ROD END
- Ⓕ AP32797 HOSE ASSY 05 x 396" - RR CAP END
- Ⓖ AP4313 HOSE ASSY 04 x 396" - LR ROD END
- Ⓗ AP42174 HOSE ASSY 05 x 384" - LR CAP END

NOTE: INSTALLATION MUST CONFORM TO GOOD SHOP PRACTICES, SAE STANDARDS, VIA STANDARDS, AND OTHER APPLICABLE STANDARDS.

LEVELING SYSTEM: AP56686

NO.	DATE	REVISION

THE INFORMATION DISCLOSED ON THIS DRAWING IS CONFIDENTIAL AND MUST NOT BE DISCLOSED OR USED IN ANY MANNER WHICH WILL BE DETRIMENTAL TO THE HWH CORPORATION

HWH	1-80 EXIT 267 SOUTH
RT 1 MOSCOW, IOWA 52760	
SCALE 1:6	DATE 18MAY16
DRAWN BY	
HYD CONN DIAGRAM	
ELITE TRAILER	DRAWING NUMBER
	MP71001