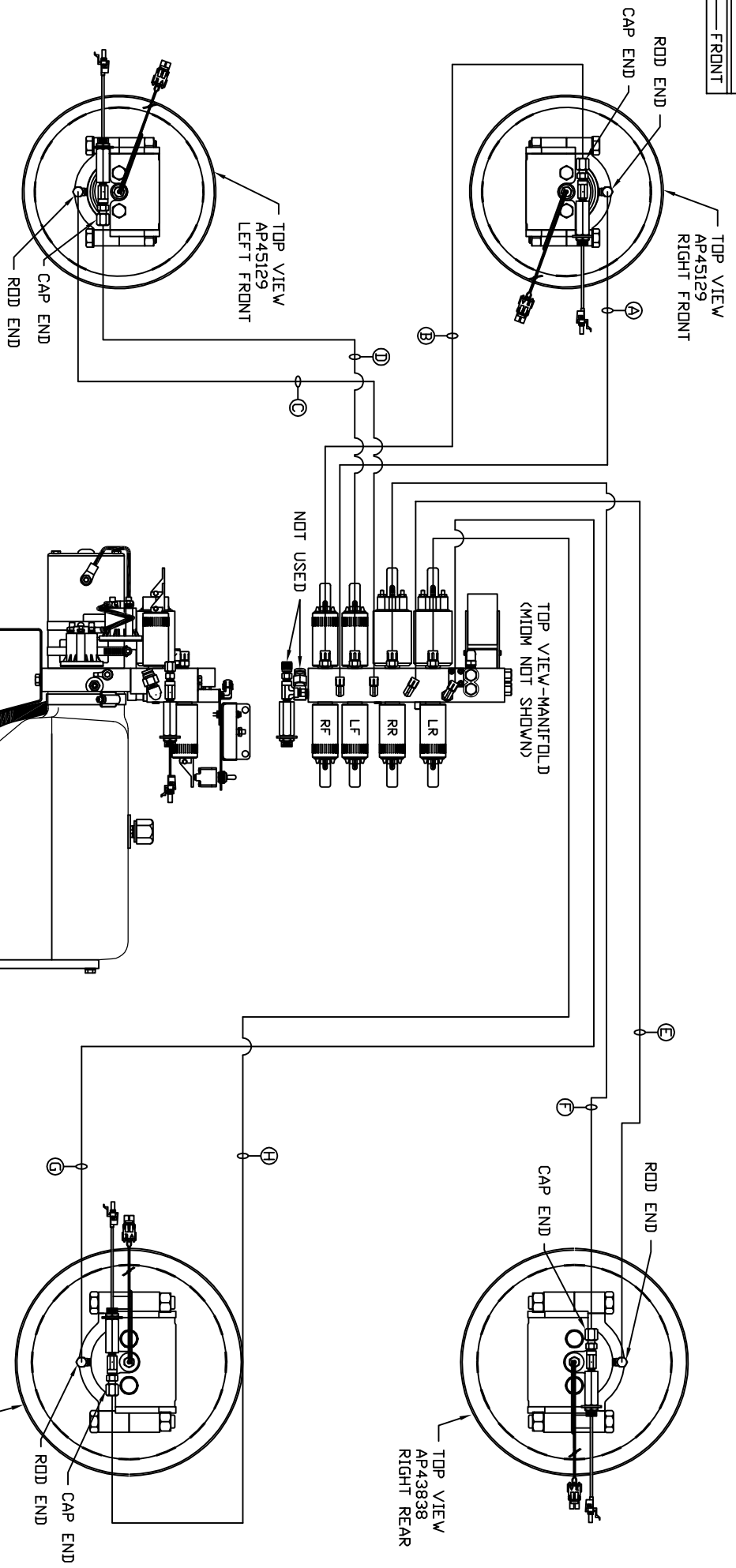


ORIENTATION
FRONT



- Ⓐ AP7385 HOSE ASSY 04 x 252' - RF RDD END
- Ⓑ AP42093 HOSE ASSY 05 x 276' - RF CAP END
- Ⓒ AP5561 HOSE ASSY 04 x 336' - LF RDD END
- Ⓓ AP8381 HOSE ASSY 05 x 360' - LF CAP END
- Ⓔ AP4159 HOSE ASSY 04 x 72' - RR RDD END
- Ⓕ AP42051 HOSE ASSY 05 x 84' - RR CAP END
- Ⓖ AP5352 HOSE ASSY 04 x 96' - LR RDD END
- Ⓗ AP42054 HOSE ASSY 05 x 108' - LR CAP END

NOTE: INSTALLATION MUST CONFORM TO GOOD SHOP PRACTICES, SAE STANDARDS, RVIA STANDARDS, AND OTHER APPLICABLE STANDARDS.

LEVELING SYSTEM: AP56993

NO.	DATE	REVISION

HWH 1-80 EXIT 267 SOUTH
 RT 1 MOSCOW, IOWA 52760
 SCALE 1:6 DATE 12AUG16 DRAWN BY
 HYD CONN DIAGRAM
 LDS DRAWING NUMBER MP71019

THE INFORMATION DISCLOSED ON THIS DRAWING IS CONFIDENTIAL AND MUST NOT BE DISCLOSED OR USED IN ANY MANNER WHICH WILL BE DETRIMENTAL TO THE HWH CORPORATION