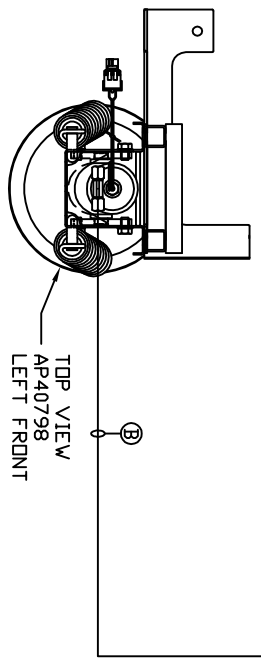
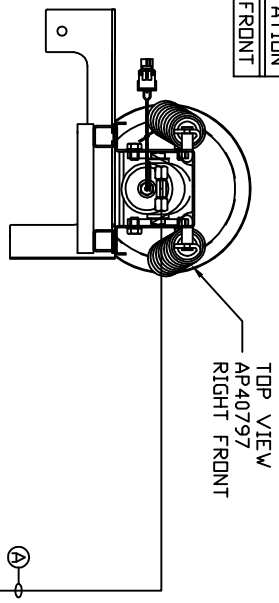
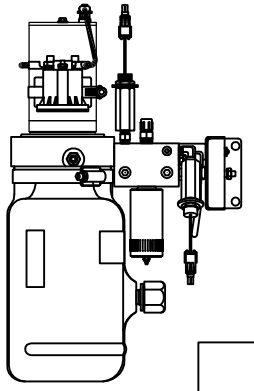
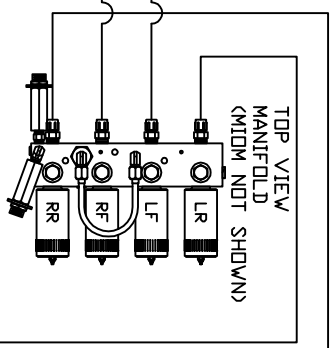


ORIENTATION
FRONT

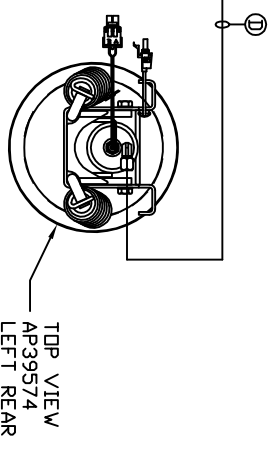
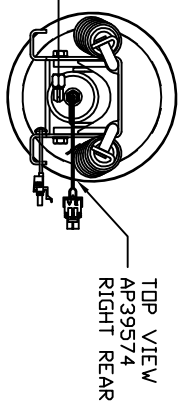


CROSS TIE REQUIRED FOR FRONT AND REAR JACKS.

- Ⓐ AP6115 HOSE ASSY 04 x 168"
- Ⓑ AP10566 HOSE ASSY 04 x 102"
WAS AP7832 HOSE ASSY 04 x 100"
- Ⓒ AP4061 HOSE ASSY 04 x 216"
- Ⓓ AP6115 HOSE ASSY 04 x 168"



LOCATION AND ORIENTATION OF PUMP/MANIFOLD ASSEMBLY WILL DIFFER DEPENDING UPON O.E.M.



NOTE: INSTALLATION MUST CONFORM TO GOOD SHOP PRACTICES, SAE STANDARDS, RVIA STANDARDS, AND OTHER APPLICABLE STANDARDS.

LEVELING SYSTEM: AP57179

NO.	DATE	REVISION
1	21MAR17	UPDATED HOSE

THE INFORMATION DISCLOSED ON THIS DRAWING IS CONFIDENTIAL AND MUST NOT BE DISCLOSED OR USED IN ANY MANNER WHICH WILL BE DETRIMENTAL TO THE HWH CORPORATION

HWH 1-80 EXIT 267 SOUTH
RT 1 MOSCOW, IOWA 52760

SCALE 1:6 DATE 03NOV16 DRAWN BY

HYD CONN DIAGRAM

FARBER

DRAWING NUMBER MP71031