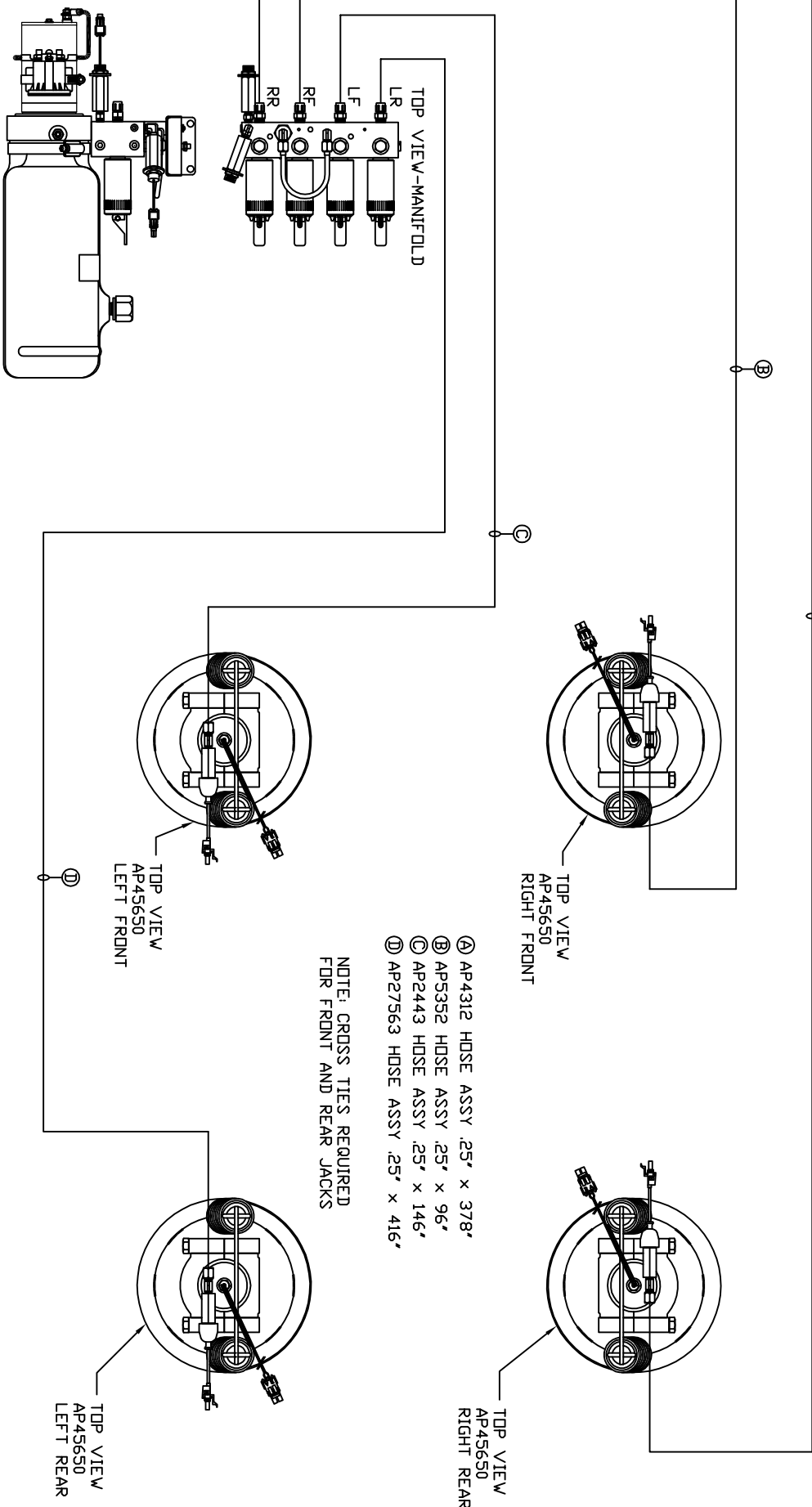


ORIENTATION
FRONT



- Ⓐ AP4312 HOSE ASSY .25" x 378"
- Ⓑ AP5352 HOSE ASSY .25" x 96"
- Ⓒ AP2443 HOSE ASSY .25" x 146"
- Ⓓ AP27563 HOSE ASSY .25" x 416"

NOTE: CROSS TIES REQUIRED FOR FRONT AND REAR JACKS

SIDE VIEW PWR/CONTROL-AP47419
LOCATION AND ORIENTATION OF PUMP/MANIFOLD ASSEMBLY WILL DIFFER DEPENDING UPON OEM.

NOTE: INSTALLATION MUST CONFORM TO GOOD SHOP PRACTICES, SAE STANDARDS, RVIA STANDARDS, AND OTHER APPLICABLE STANDARDS.

LEVELING SYSTEM: AP47414

NO.	DATE	REVISION

HWH 1-80 EXIT 267 SOUTH
 RT 1 MOSCOW, IOWA 52760
 SCALE 1:6 DATE 13FEB17 DRAWN BY .
HYD CONN DIAGRAM
WINNEBAGO DRAWING NUMBER
 MP71073

THE INFORMATION DISCLOSED ON THIS DRAWING IS CONFIDENTIAL AND MUST NOT BE DISCLOSED OR USED IN ANY MANNER WHICH WILL BE DETRIMENTAL TO THE HWH CORPORATION