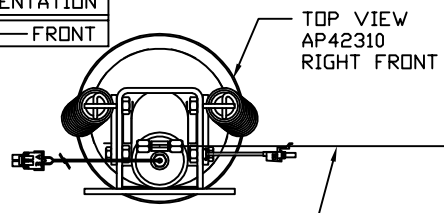
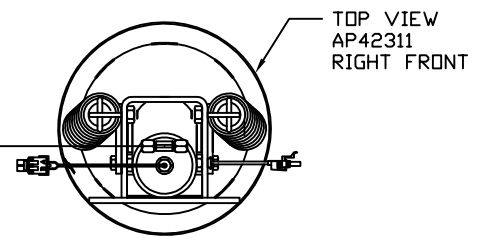


ORIENTATION
← FRONT



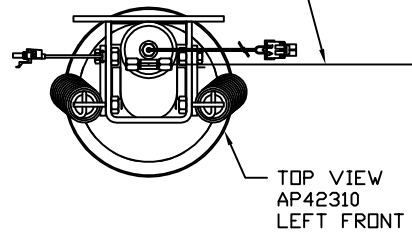
RIGHT FRONT HOSE



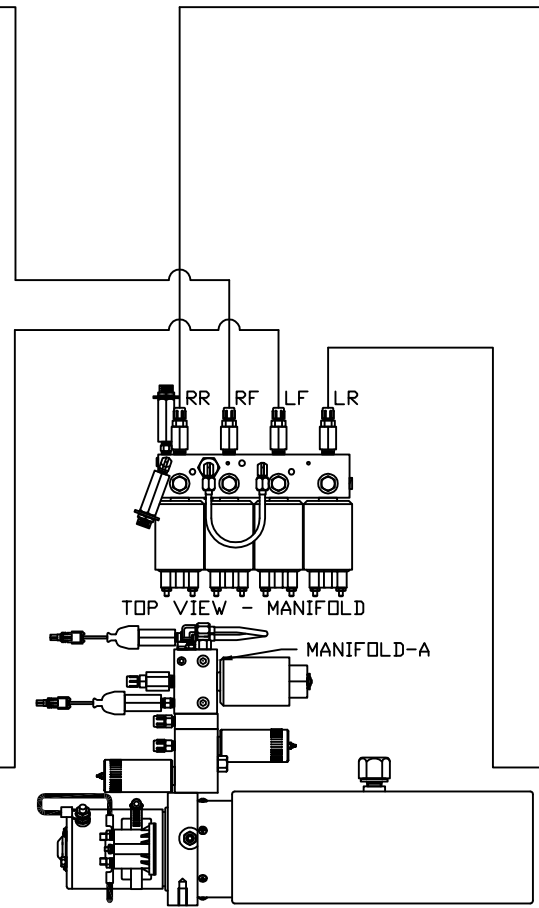
RIGHT REAR HOSE

NOTE: CROSS TIE REQUIRED FOR FRONT JACKS

LEFT FRONT HOSE



TOP VIEW AP42310 LEFT FRONT

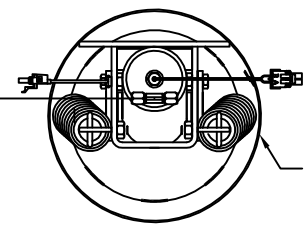


TOP VIEW - MANIFOLD

MANIFOLD-A

SIDE VIEW OF PUMP/MANIFOLD-AP36694

LEFT REAR HOSE



TOP VIEW AP42311 LEFT FRONT

MODEL	HOSE KIT	LF HOSE	RF HOSE	RR HOSE	LR HOSE
J38S	AP32130	AP4159	AP4062	AP2464	AP4064

NOTE: INSTALLATION MUST CONFORM TO GOOD SHOP PRACTICES, SAE STANDARDS, RVIA STANDARDS, AND OTHER APPLICABLE STANDARDS.

LEVELING SYSTEM: AP42839

NO.	DATE	REVISION

THE INFORMATION DISCLOSED ON THIS DRAWING IS CONFIDENTIAL AND MUST NOT BE DISCLOSED OR USED IN ANY MANNER WHICH WILL BE DETRIMENTAL TO THE HWH CORPORATION

HWH I-80 EXIT 267 SOUTH
RT 1 MOSCOW, IOWA 52760
SCALE 1:6 DATE 14FEB17 DRAWN BY .

HYD CONN DIAGRAM

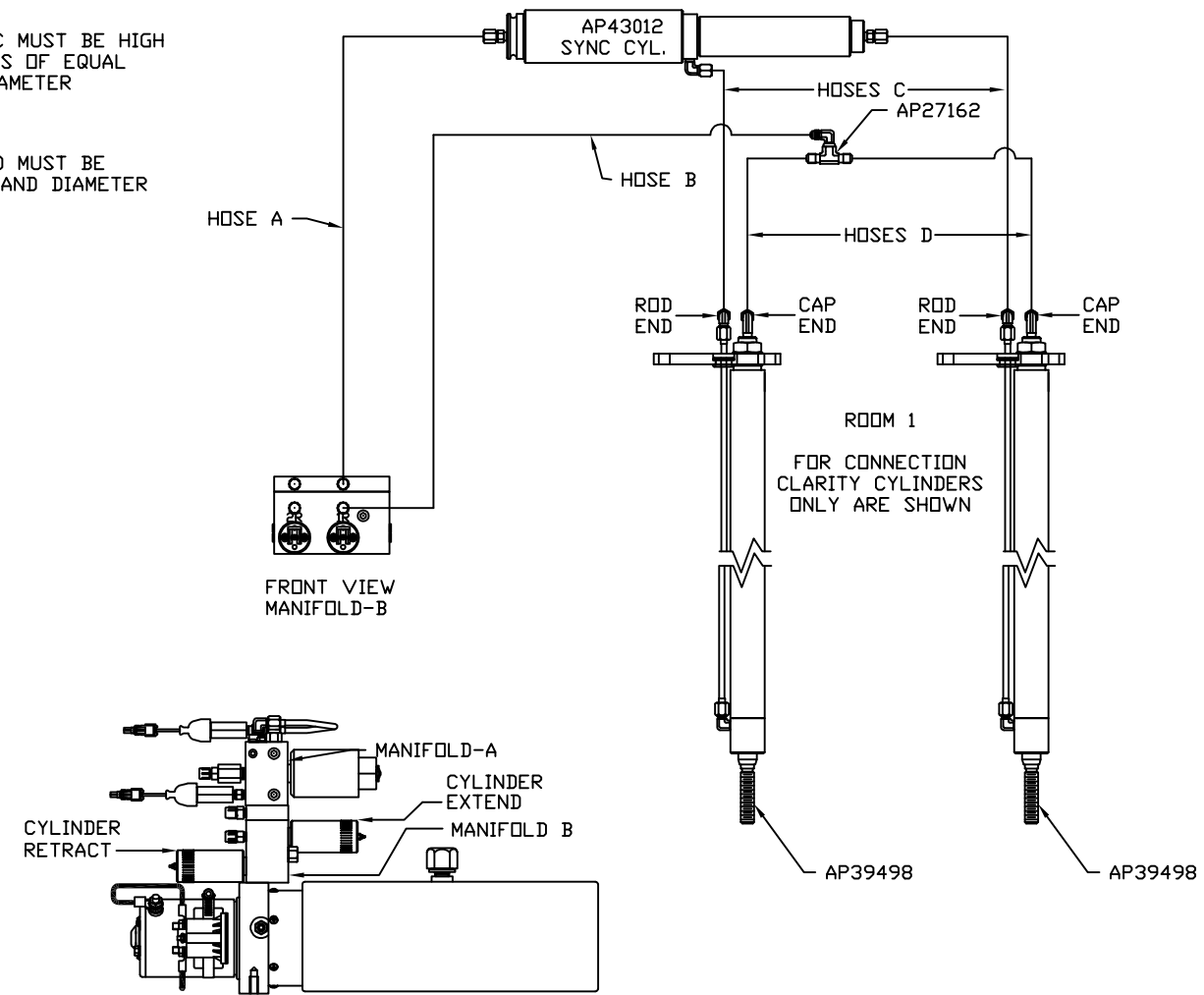
WINNEBAGO DRAWING NUMBER MP71079 A/C

ORIENTATION
 ← FRONT

MODEL	HOSE A	HOSE B	HOSES C	HOSES D
J38S				

NOTE: HOSES C MUST BE HIGH PRESSURE HOSES OF EQUAL LENGTH AND DIAMETER

NOTE: HOSES D MUST BE EQUAL LENGTH AND DIAMETER



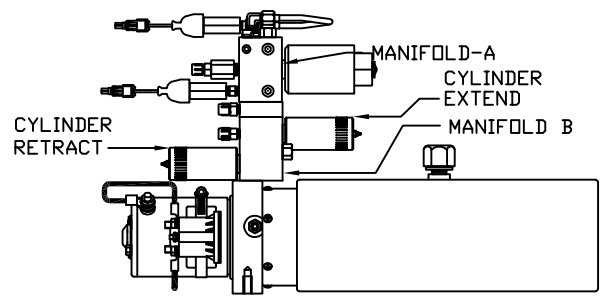
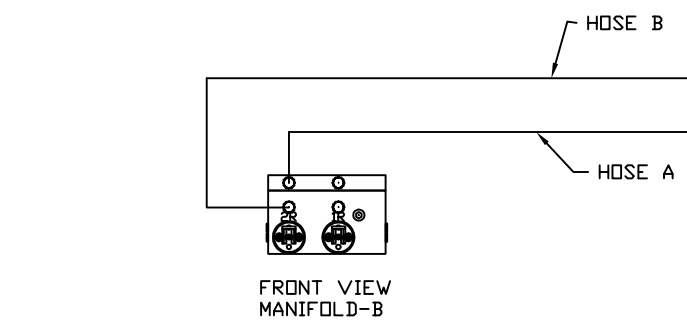
SIDE VIEW OF PUMP/MANIFOLD-AP36694

ORIENTATION
 ← FRONT

MODEL	HOSE A	HOSE B	HOSES C	HOSES D
J38S	NO INFORMATION			

NOTE: HOSES C MUST BE HIGH PRESSURE HOSES OF EQUAL LENGTH AND DIAMETER

NOTE: HOSES D MUST BE EQUAL LENGTH AND DIAMETER



SIDE VIEW OF PUMP/MANIFOLD-AP36694

