

NOTE: CROSS TIES REQUIRED FOR FRONT AND REAR JACKS

NOTE: INSTALLATION MUST CONFORM TO GOOD SHOP PRACTICES, SAE STANDARDS, RVIA STANDARDS, AND OTHER APPLICABLE STANDARDS. LEVELING SYSTEM: AP40438

		HWH		I-80 EXIT 267 SOUTH RT 1 MOSCOW, IOWA 52760	
		SCALE 1:6	DATE 14FEB17	DRAWN BY .	
		HYD CONN DIAGRAM			
NO.	DATE	REVISION			
		WINNEBAGO		DRAWING NUMBER MP71081 A/F	

THE INFORMATION DISCLOSED ON THIS DRAWING IS CONFIDENTIAL AND MUST NOT BE DISCLOSED OR USED IN ANY MANNER WHICH WILL BE DETRIMENTAL TO THE HWH CORPORATION

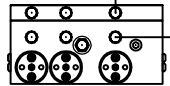
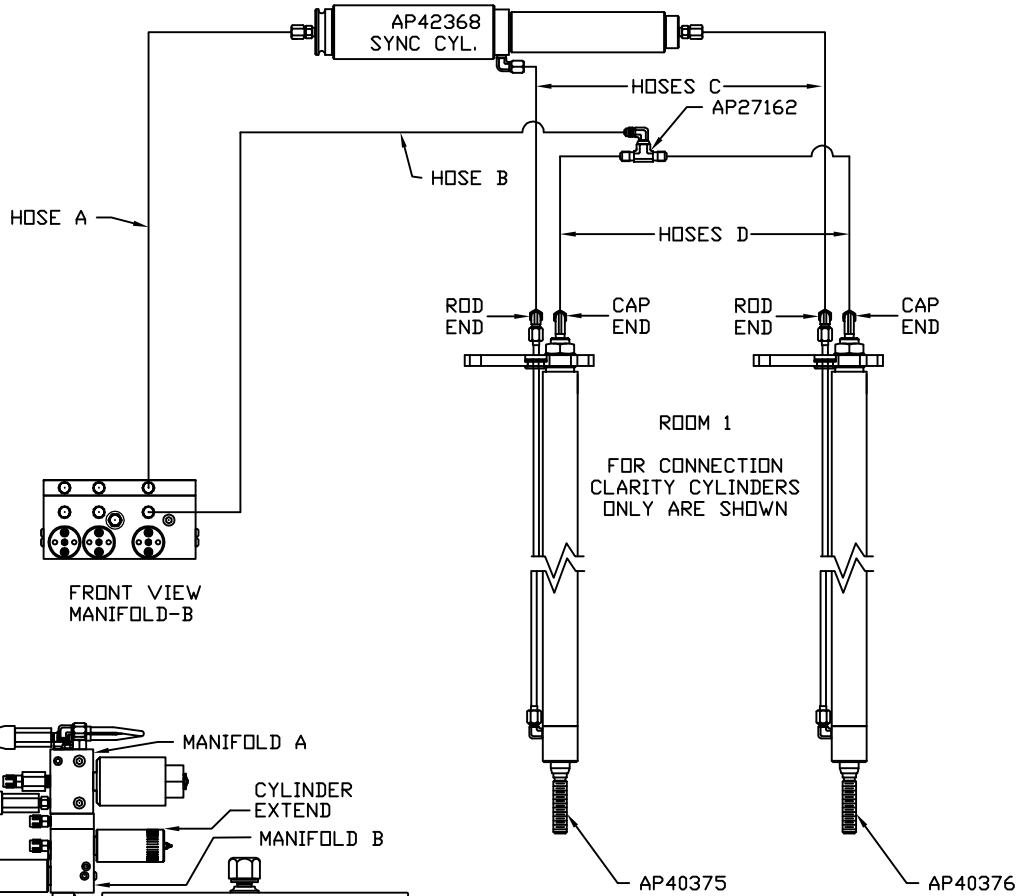
ORIENTATION
← FRONT

MODEL	HOSE A	HOSE B	HOSES C	HOSES D
R40CD	SEE MP71081C			
R40WD	NO INFORMATION			
S40WD	NO INFORMATION			

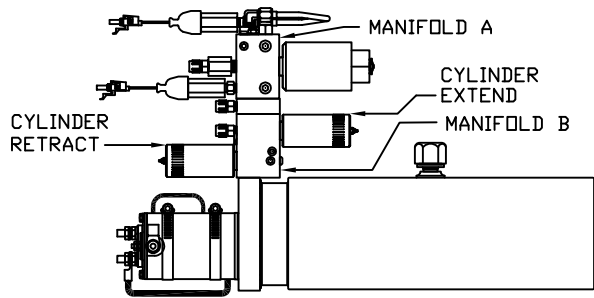
NOTE: NO ROOM EXTENSION INFORMATION ON MODELS R40KD, R40WD, R40BD, AND S40KD

NOTE: HOSES C MUST BE HIGH PRESSURE HOSES OF EQUAL LENGTH AND DIAMETER

NOTE: HOSES D MUST BE EQUAL LENGTH AND DIAMETER



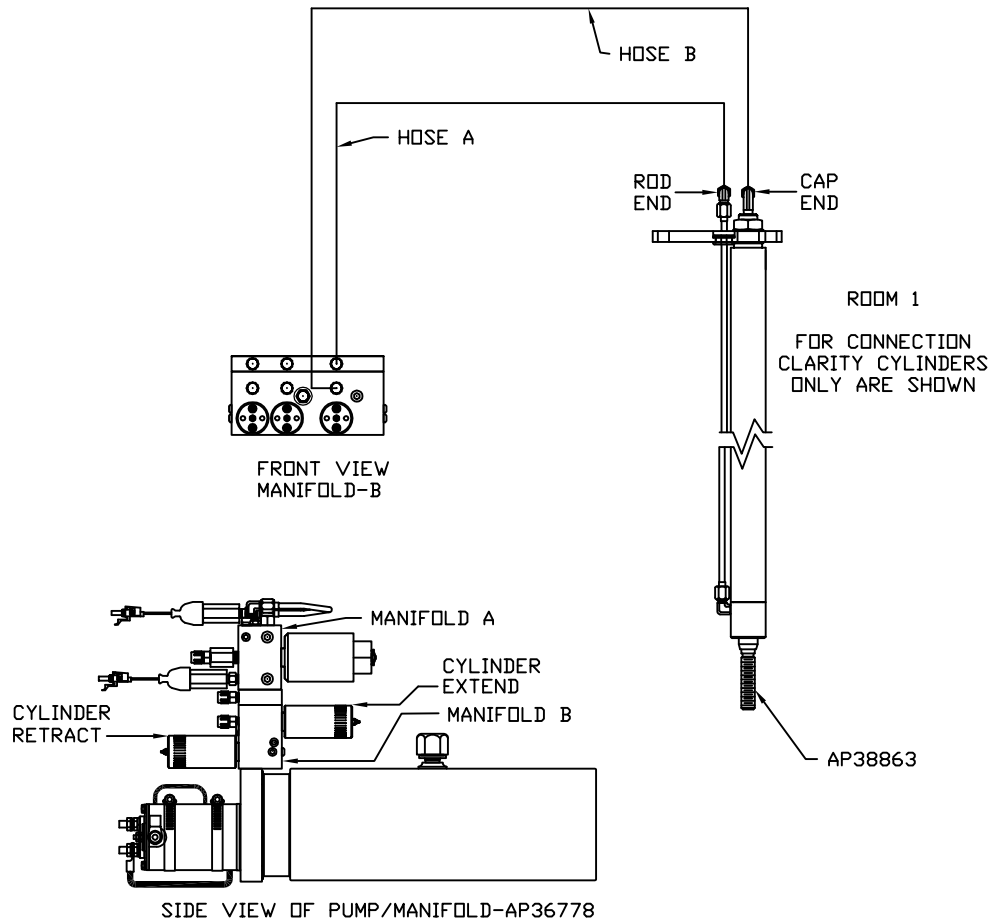
FRONT VIEW
MANIFOLD-B



SIDE VIEW OF PUMP/MANIFOLD-AP36778

ORIENTATION
 ← FRONT

MODEL	HOSE A	HOSE B
R40CD	AP7385	AP6216
R40WD	SEE MP71081B	
S40WD	SEE MP71081B	

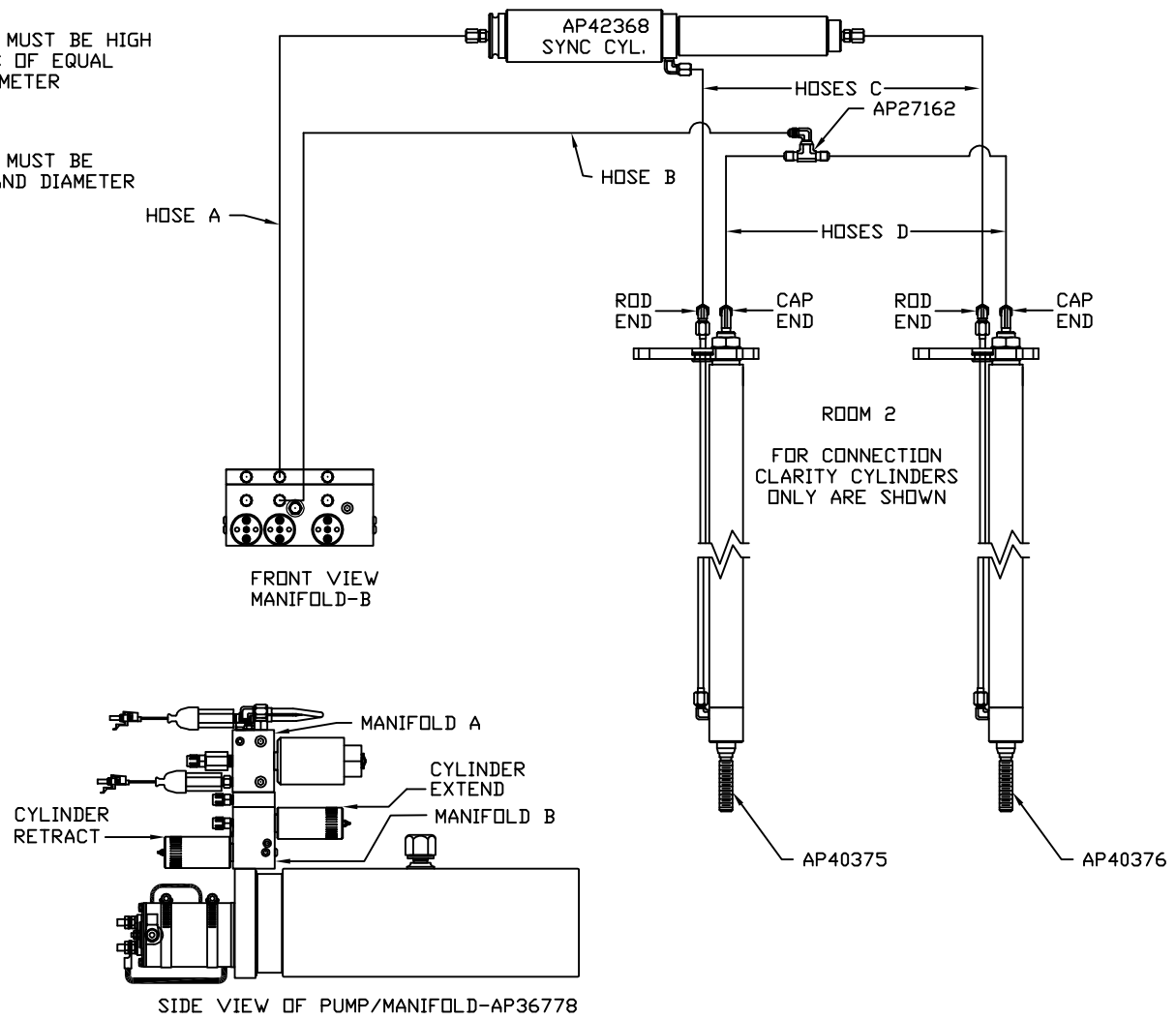


ORIENTATION
← FRONT

MODEL	HOSE A	HOSE B	HOSES C	HOSES D
R40CD	SEE MP71081E			
R40WD	NO INFORMATION			
S40WD	NO INFORMATION			

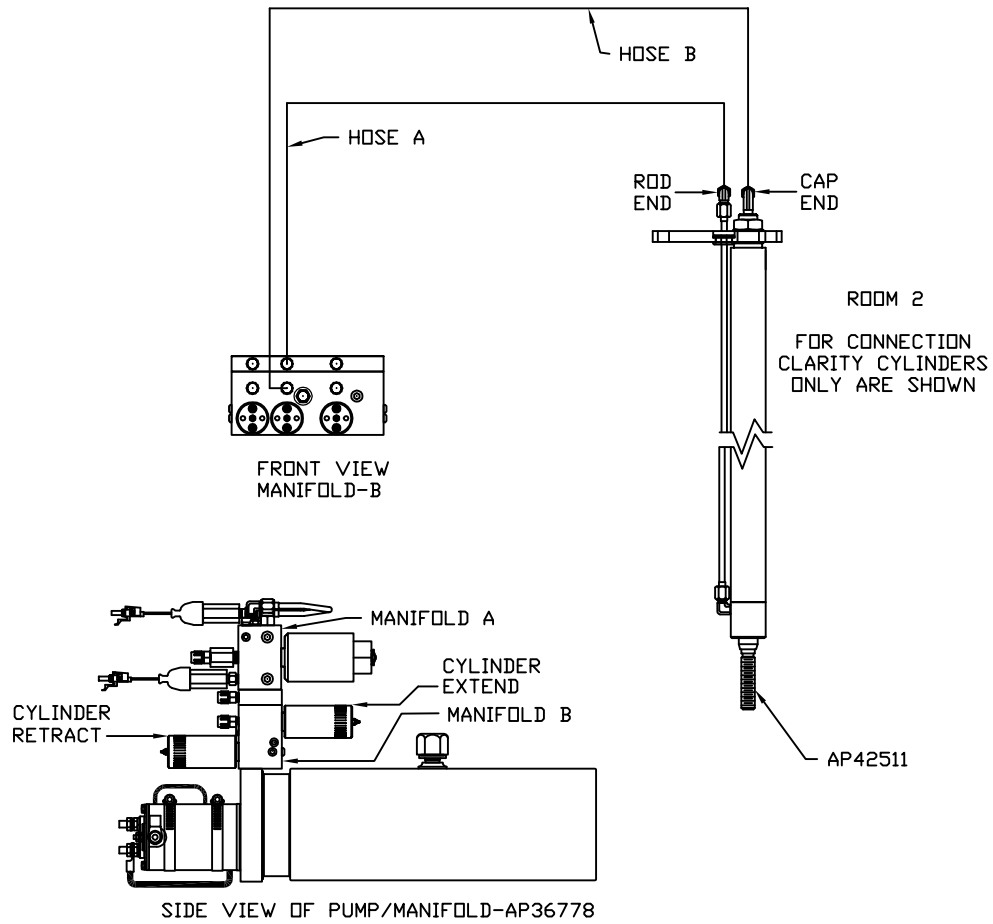
NOTE: HOSES C MUST BE HIGH PRESSURE HOSES OF EQUAL LENGTH AND DIAMETER

NOTE: HOSES D MUST BE EQUAL LENGTH AND DIAMETER



ORIENTATION
 ← FRONT

MODEL	HOSE A	HOSE B
R40CD	AP4313	AP4669
R40WD	SEE MP71081D	
S40WD	SEE MP71081D	



ORIENTATION
← FRONT

MODEL	HOSE A	HOSE B	HOSES C	HOSES D	LH ROOM EXT	RH ROOM EXT	SYNC. CYL
R40CD	NO INFORMATION				AP42013	AP42014	AP39334
R40WD	NO INFORMATION				AP40376	AP40375	AP42368
S40WD	NO INFORMATION				AP40376	AP40375	AP42368

NOTE: HOSES C MUST BE HIGH PRESSURE HOSES OF EQUAL LENGTH AND DIAMETER

NOTE: HOSES D MUST BE EQUAL LENGTH AND DIAMETER

