

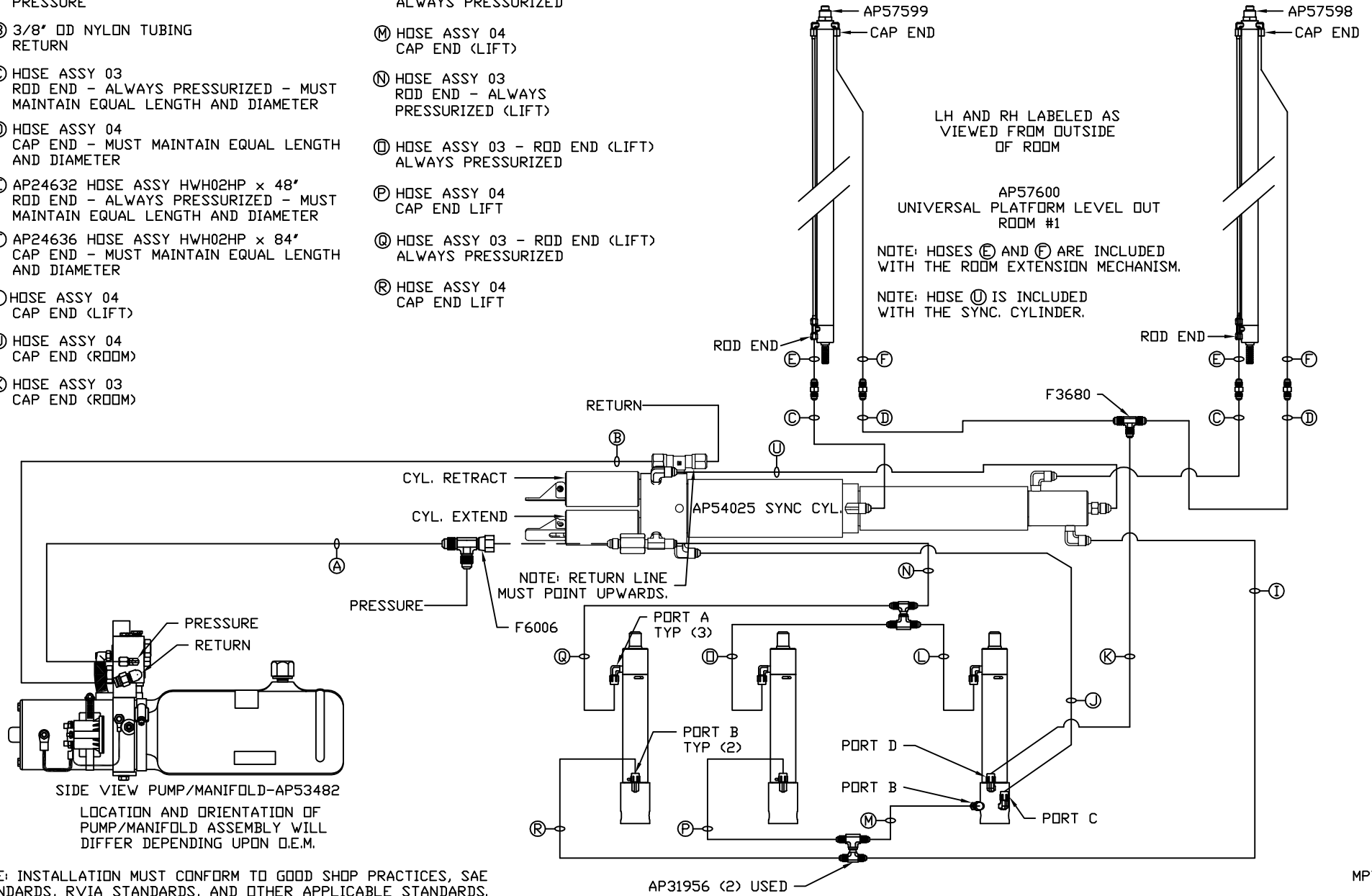
THIS PAGE INTENTIONALLY LEFT BLANK

			HWH I-80 EXIT 267 SOUTH RT 1 MOSCOW, IOWA 52760		
			SCALE 1:6	DATE 26SEP17	DRAWN BY .
			HYD CONN DIAGRAM		
			DRAWING NUMBER		
			TRANSPORT DESIGNS		MP71118 A/C
NO.	DATE	REVISION	THE INFORMATION DISCLOSED ON THIS DRAWING IS CONFIDENTIAL AND MUST NOT BE DISCLOSED OR USED IN ANY MANNER WHICH WILL BE DETRIMENTAL TO THE HWH CORPORATION		

NOTE: INSTALLATION MUST CONFORM TO GOOD SHOP PRACTICES, SAE STANDARDS, RVIA STANDARDS, AND OTHER APPLICABLE STANDARDS.

- (A) HOSE ASSY 04  
PRESSURE
- (B) 3/8" OD NYLON TUBING  
RETURN
- (C) HOSE ASSY 03  
ROD END - ALWAYS PRESSURIZED - MUST  
MAINTAIN EQUAL LENGTH AND DIAMETER
- (D) HOSE ASSY 04  
CAP END - MUST MAINTAIN EQUAL LENGTH  
AND DIAMETER
- (E) AP24632 HOSE ASSY HWH02HP x 48"  
ROD END - ALWAYS PRESSURIZED - MUST  
MAINTAIN EQUAL LENGTH AND DIAMETER
- (F) AP24636 HOSE ASSY HWH02HP x 84"  
CAP END - MUST MAINTAIN EQUAL LENGTH  
AND DIAMETER
- (I) HOSE ASSY 04  
CAP END (LIFT)
- (J) HOSE ASSY 04  
CAP END (ROOM)
- (K) HOSE ASSY 03  
CAP END (ROOM)

- (L) HOSE ASSY 03 - ROD END (LIFT)  
ALWAYS PRESSURIZED
- (M) HOSE ASSY 04  
CAP END (LIFT)
- (N) HOSE ASSY 03  
ROD END - ALWAYS  
PRESSURIZED (LIFT)
- (O) HOSE ASSY 03 - ROD END (LIFT)  
ALWAYS PRESSURIZED
- (P) HOSE ASSY 04  
CAP END LIFT
- (Q) HOSE ASSY 03 - ROD END (LIFT)  
ALWAYS PRESSURIZED
- (R) HOSE ASSY 04  
CAP END LIFT

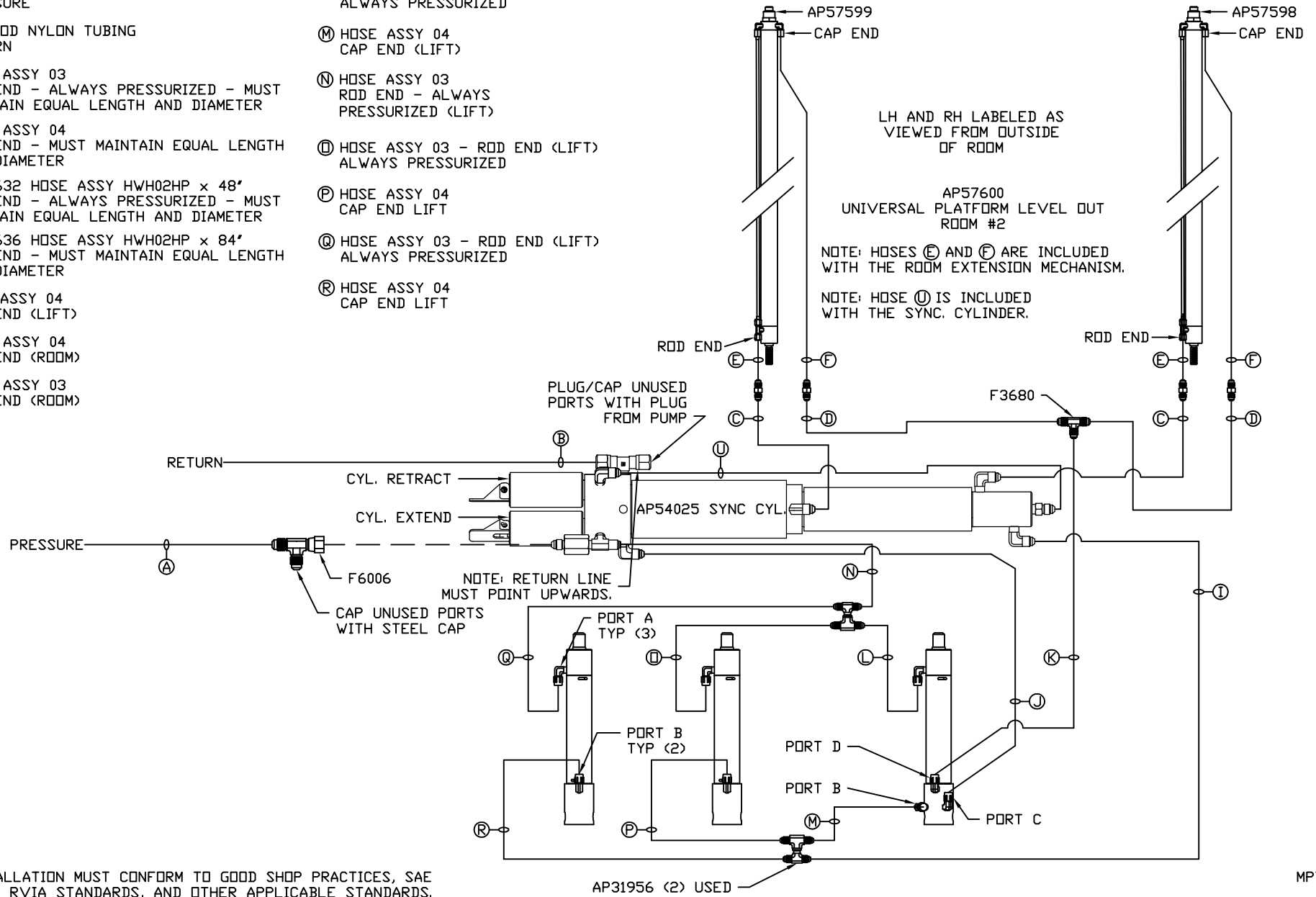


NOTE: INSTALLATION MUST CONFORM TO GOOD SHOP PRACTICES, SAE STANDARDS, RVIA STANDARDS, AND OTHER APPLICABLE STANDARDS.

MP71118 B/C  
26SEP17

- (A) HOSE ASSY 04  
PRESSURE
- (B) 3/8" OD NYLON TUBING  
RETURN
- (C) HOSE ASSY 03  
ROD END - ALWAYS PRESSURIZED - MUST  
MAINTAIN EQUAL LENGTH AND DIAMETER
- (D) HOSE ASSY 04  
CAP END - MUST MAINTAIN EQUAL LENGTH  
AND DIAMETER
- (E) AP24632 HOSE ASSY HWH02HP x 48"  
ROD END - ALWAYS PRESSURIZED - MUST  
MAINTAIN EQUAL LENGTH AND DIAMETER
- (F) AP24636 HOSE ASSY HWH02HP x 84"  
CAP END - MUST MAINTAIN EQUAL LENGTH  
AND DIAMETER
- (I) HOSE ASSY 04  
CAP END (LIFT)
- (J) HOSE ASSY 04  
CAP END (ROOM)
- (K) HOSE ASSY 03  
CAP END (ROOM)

- (L) HOSE ASSY 03 - ROD END (LIFT)  
ALWAYS PRESSURIZED
- (M) HOSE ASSY 04  
CAP END (LIFT)
- (N) HOSE ASSY 03  
ROD END - ALWAYS  
PRESSURIZED (LIFT)
- (O) HOSE ASSY 03 - ROD END (LIFT)  
ALWAYS PRESSURIZED
- (P) HOSE ASSY 04  
CAP END LIFT
- (Q) HOSE ASSY 03 - ROD END (LIFT)  
ALWAYS PRESSURIZED
- (R) HOSE ASSY 04  
CAP END LIFT



NOTE: INSTALLATION MUST CONFORM TO GOOD SHOP PRACTICES, SAE STANDARDS, RVIA STANDARDS, AND OTHER APPLICABLE STANDARDS.

MP71118 C/C  
26SEP17