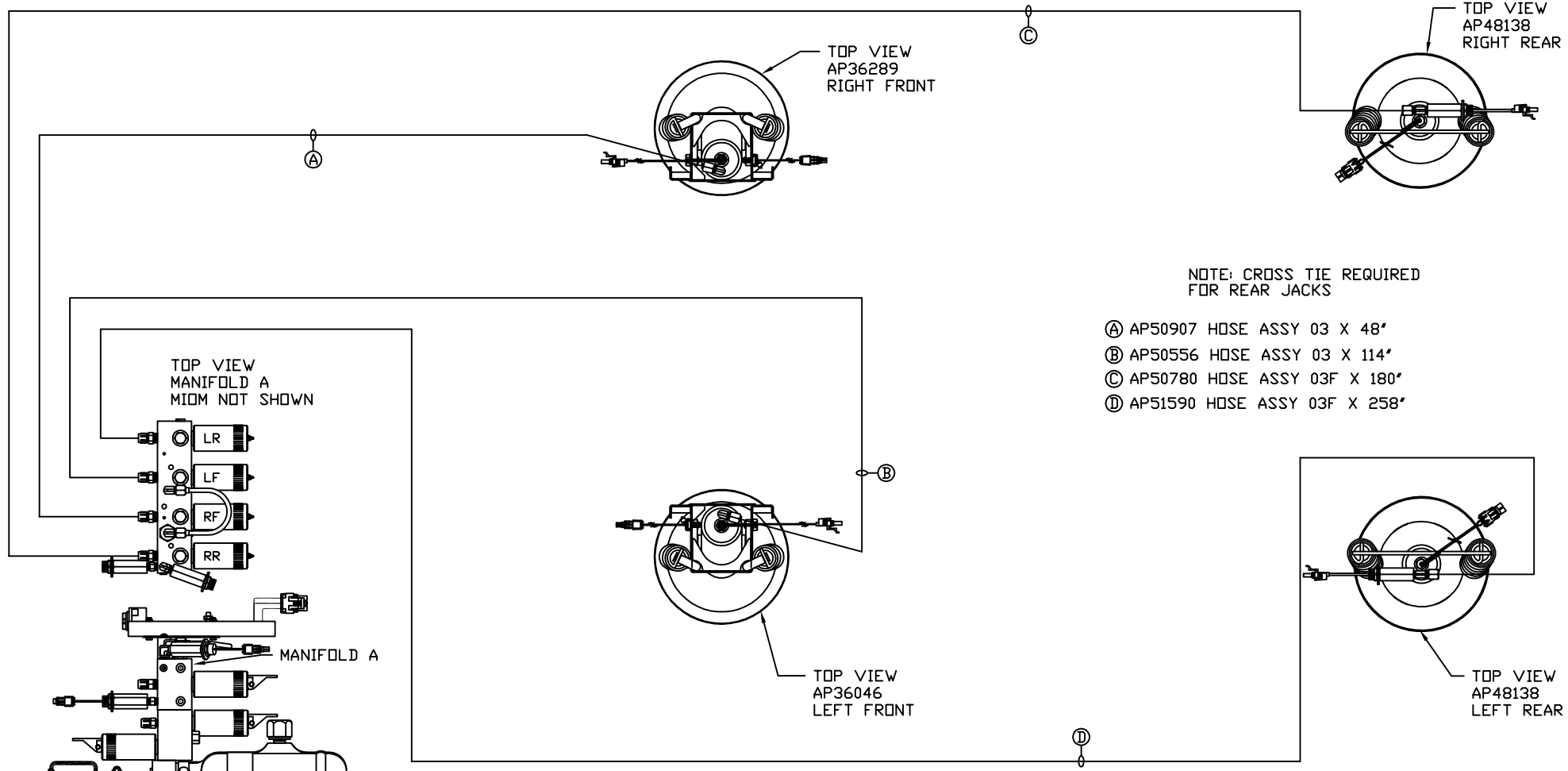


ORIENTATION
← FRONT



NOTE: CROSS TIE REQUIRED FOR REAR JACKS

- Ⓐ AP50907 HOSE ASSY 03 X 48"
- Ⓑ AP50556 HOSE ASSY 03 X 114"
- Ⓒ AP50780 HOSE ASSY 03F X 180"
- Ⓓ AP51590 HOSE ASSY 03F X 258"

TOP VIEW
MANIFOLD A
MIDM NOT SHOWN

LR
LF
RF
RR

MANIFOLD A

SIDE VIEW PUMP/MANIFOLD-AP51126

LOCATION AND ORIENTATION OF PUMP/MANIFOLD ASSEMBLY WILL DIFFER DEPENDING UPON O.E.M.

NOTE: INSTALLATION MUST CONFORM TO GOOD SHOP PRACTICES, SAE STANDARDS, RVIA STANDARDS, AND OTHER APPLICABLE STANDARDS.

LEVELING SYSTEM: AP58381

NO.	DATE	REVISION

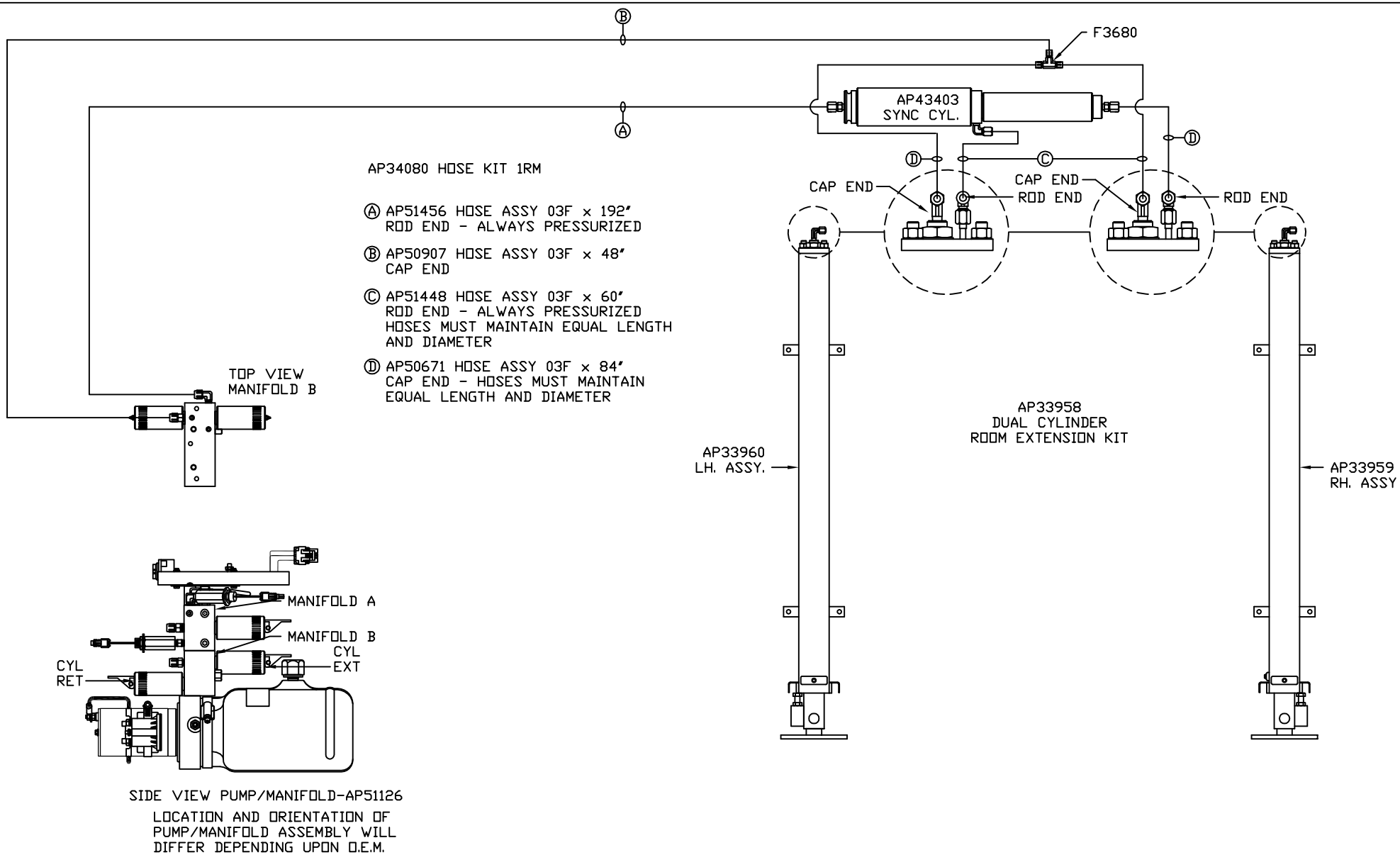
HWH I-80 EXIT 267 SOUTH
RT 1 MOSCOW, IOWA 52760

SCALE 1:6 DATE 20DEC17 DRAWN BY .

HYD CONN DIAGRAM

COACH HOUSE DRAWING NUMBER MP71130 A/B

THE INFORMATION DISCLOSED ON THIS DRAWING IS CONFIDENTIAL AND MUST NOT BE DISCLOSED OR USED IN ANY MANNER WHICH WILL BE DETRIMENTAL TO THE HWH CORPORATION



NOTE: INSTALLATION MUST CONFORM TO GOOD SHOP PRACTICES, SAE STANDARDS, RVIA STANDARDS, AND OTHER APPLICABLE STANDARDS.

MP71130 B/B
20DEC17