

SIDE VIEW PUMP/MANIFOLD-AP53482

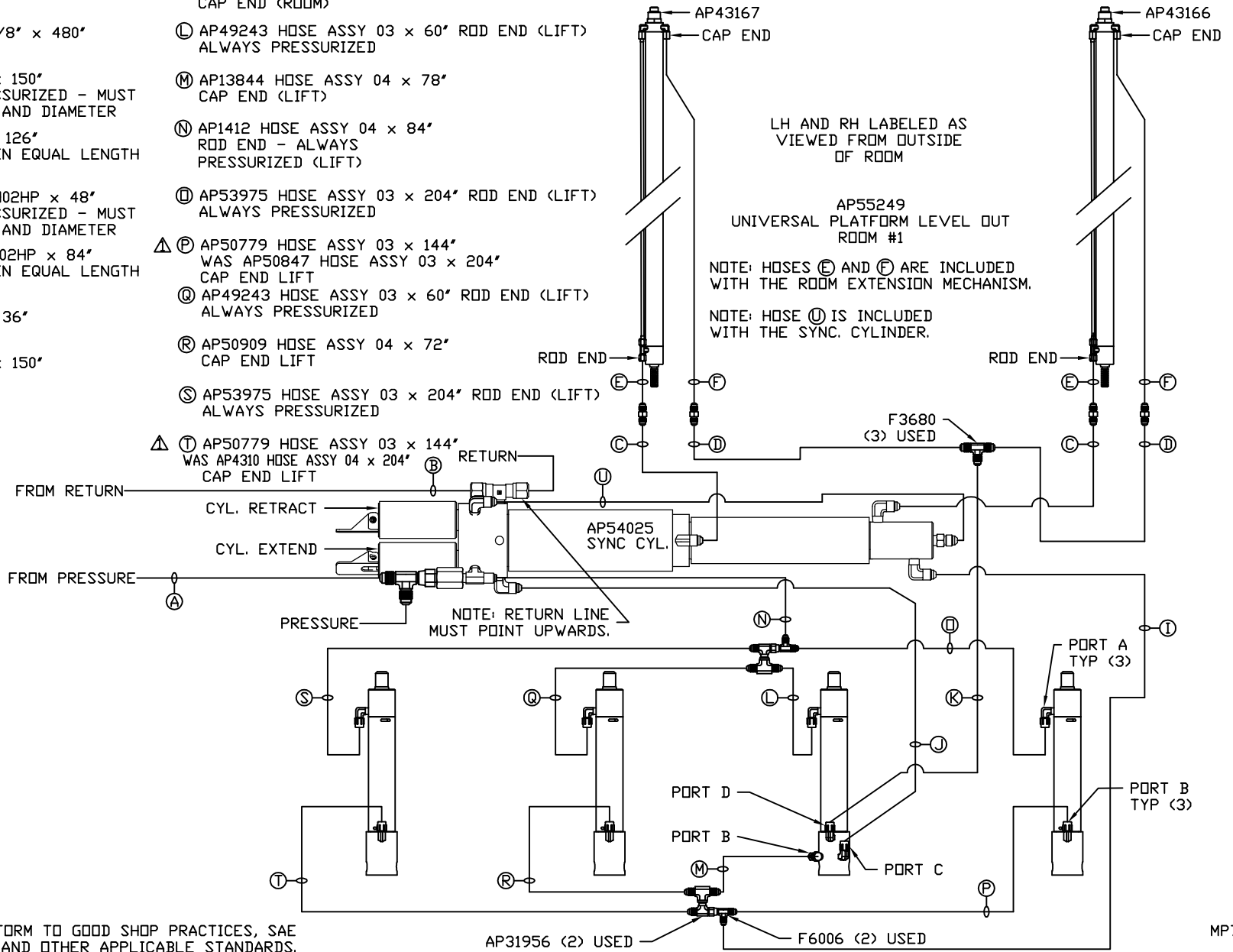
LOCATION AND ORIENTATION OF  
PUMP/MANIFOLD ASSEMBLY WILL  
DIFFER DEPENDING UPON O.E.M.

NOTE: INSTALLATION MUST CONFORM TO GOOD SHOP PRACTICES, SAE STANDARDS, RVIA STANDARDS, AND OTHER APPLICABLE STANDARDS.

|  |         |               |  |            |                |
|--|---------|---------------|--|------------|----------------|
|  |         |               | HWH I-80 EXIT 267 SOUTH<br>RT 1 MOSCOW, IOWA 52760 |            |                |
|  |         | SCALE 1:6     | DATE 12JAN17                                       | DRAWN BY . |                |
| ▲  | 22FEB18 | UPDATED HOSES |  |            |                |
| NO.  | DATE    | REVISION      |  |            |                |
| THE INFORMATION DISCLOSED ON THIS DRAWING IS CONFIDENTIAL AND MUST NOT BE DISCLOSED OR USED IN ANY MANNER WHICH WILL BE DETRIMENTAL TO THE HWH CORPORATION |         |               | HYD CONN DIAGRAM                                   |            | DRAWING NUMBER |
|  |         |               | PERFORMANCE TRAILERS                               |            | MP71136 A/C    |

- (A) AP4073 HOSE ASSY 04 x 60" PRESSURE
- (B) P29287 NYLON TUBING 3/8" x 480" RETURN
- (C) AP51404 HOSE ASSY 03 x 150" ROD END - ALWAYS PRESSURIZED - MUST MAINTAIN EQUAL LENGTH AND DIAMETER
- (D) AP4906 HOSE ASSY 04 x 126" CAP END - MUST MAINTAIN EQUAL LENGTH AND DIAMETER
- (E) AP24632 HOSE ASSY HWH02HP x 48" ROD END - ALWAYS PRESSURIZED - MUST MAINTAIN EQUAL LENGTH AND DIAMETER
- (F) AP24818 HOSE ASSY HWH02HP x 84" CAP END - MUST MAINTAIN EQUAL LENGTH AND DIAMETER
- (I) AP4059 HOSE ASSY 04 x 36" CAP END (LIFT)
- (J) AP51404 HOSE ASSY 03 x 150" CAP END (ROOM)

- (K) AP50671 HOSE ASSY 04 x 84" AP58165 HOSE KIT 2RM/UPLD CAP END (ROOM)
- (L) AP49243 HOSE ASSY 03 x 60" ROD END (LIFT) ALWAYS PRESSURIZED
- (M) AP13844 HOSE ASSY 04 x 78" CAP END (LIFT)
- (N) AP1412 HOSE ASSY 04 x 84" ROD END - ALWAYS PRESSURIZED (LIFT)
- (O) AP53975 HOSE ASSY 03 x 204" ROD END (LIFT) ALWAYS PRESSURIZED
- (P) AP50779 HOSE ASSY 03 x 144" WAS AP50847 HOSE ASSY 03 x 204" CAP END LIFT
- (Q) AP49243 HOSE ASSY 03 x 60" ROD END (LIFT) ALWAYS PRESSURIZED
- (R) AP50909 HOSE ASSY 04 x 72" CAP END LIFT
- (S) AP53975 HOSE ASSY 03 x 204" ROD END (LIFT) ALWAYS PRESSURIZED
- (T) AP50779 HOSE ASSY 03 x 144" WAS AP4310 HOSE ASSY 04 x 204" CAP END LIFT



LH AND RH LABELED AS VIEWED FROM OUTSIDE OF ROOM

AP55249 UNIVERSAL PLATFORM LEVEL OUT ROOM #1

NOTE: HOSES (E) AND (F) ARE INCLUDED WITH THE ROOM EXTENSION MECHANISM.

NOTE: HOSE (I) IS INCLUDED WITH THE SYNC. CYLINDER.

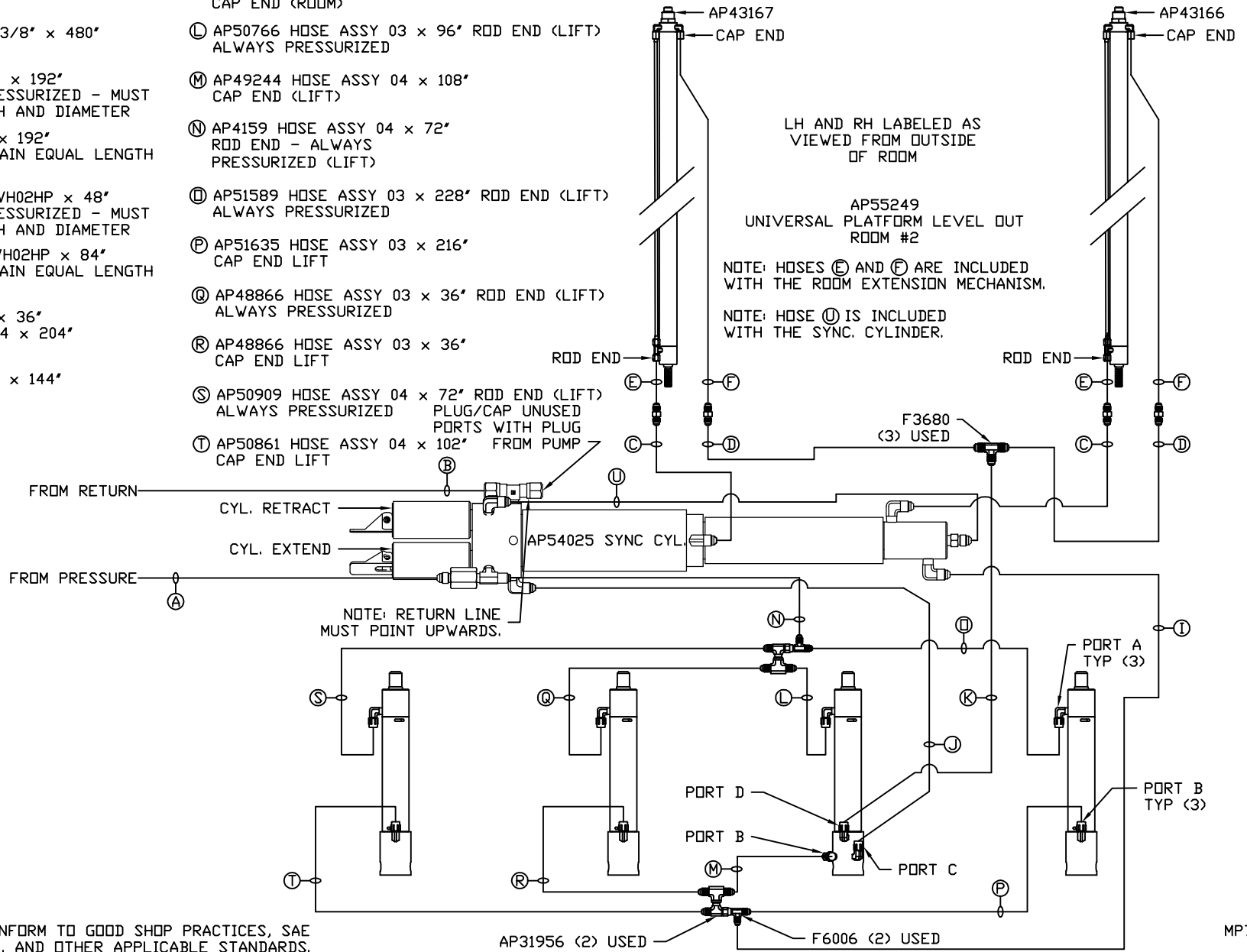
NOTE: RETURN LINE MUST POINT UPWARDS.

NOTE: INSTALLATION MUST CONFORM TO GOOD SHOP PRACTICES, SAE STANDARDS, RVIA STANDARDS, AND OTHER APPLICABLE STANDARDS.

MP71136 B/C 22FEB18

- Ⓐ AP4669 HOSE ASSY 04 x 408" PRESSURE
- Ⓑ P29287 NYLON TUBING 3/8" x 480" RETURN
- Ⓒ AP49438 HOSE ASSY 03 x 192" ROD END - ALWAYS PRESSURIZED - MUST MAINTAIN EQUAL LENGTH AND DIAMETER
- Ⓓ AP4162 HOSE ASSY 04 x 192" CAP END - MUST MAINTAIN EQUAL LENGTH AND DIAMETER
- Ⓔ AP24632 HOSE ASSY HWH02HP x 48" ROD END - ALWAYS PRESSURIZED - MUST MAINTAIN EQUAL LENGTH AND DIAMETER
- Ⓕ AP24818 HOSE ASSY HWH02HP x 84" CAP END - MUST MAINTAIN EQUAL LENGTH AND DIAMETER
- Ⓖ ⓐ AP4059 HOSE ASSY 04 x 36" WAS AP4310 HOSE ASSY 04 x 204" CAP END (LIFT)
- ⓑ AP50779 HOSE ASSY 03 x 144" CAP END (ROOM)

- Ⓚ AP49245 HOSE ASSY 03 x 120" CAP END (ROOM)
- Ⓛ AP50766 HOSE ASSY 03 x 96" ROD END (LIFT) ALWAYS PRESSURIZED
- Ⓜ AP49244 HOSE ASSY 04 x 108" CAP END (LIFT)
- Ⓝ AP4159 HOSE ASSY 04 x 72" ROD END - ALWAYS PRESSURIZED (LIFT)
- Ⓣ AP51589 HOSE ASSY 03 x 228" ROD END (LIFT) ALWAYS PRESSURIZED
- Ⓟ AP51635 HOSE ASSY 03 x 216" CAP END LIFT
- Ⓠ AP48866 HOSE ASSY 03 x 36" ROD END (LIFT) ALWAYS PRESSURIZED
- Ⓡ AP48866 HOSE ASSY 03 x 36" CAP END LIFT
- Ⓢ AP50909 HOSE ASSY 04 x 72" ROD END (LIFT) ALWAYS PRESSURIZED PLUG/CAP UNUSED PORTS WITH PLUG FROM PUMP
- Ⓩ AP50861 HOSE ASSY 04 x 102" CAP END LIFT



NOTE: INSTALLATION MUST CONFORM TO GOOD SHOP PRACTICES, SAE STANDARDS, RVIA STANDARDS, AND OTHER APPLICABLE STANDARDS.

MP71136 C/C  
22FEB18