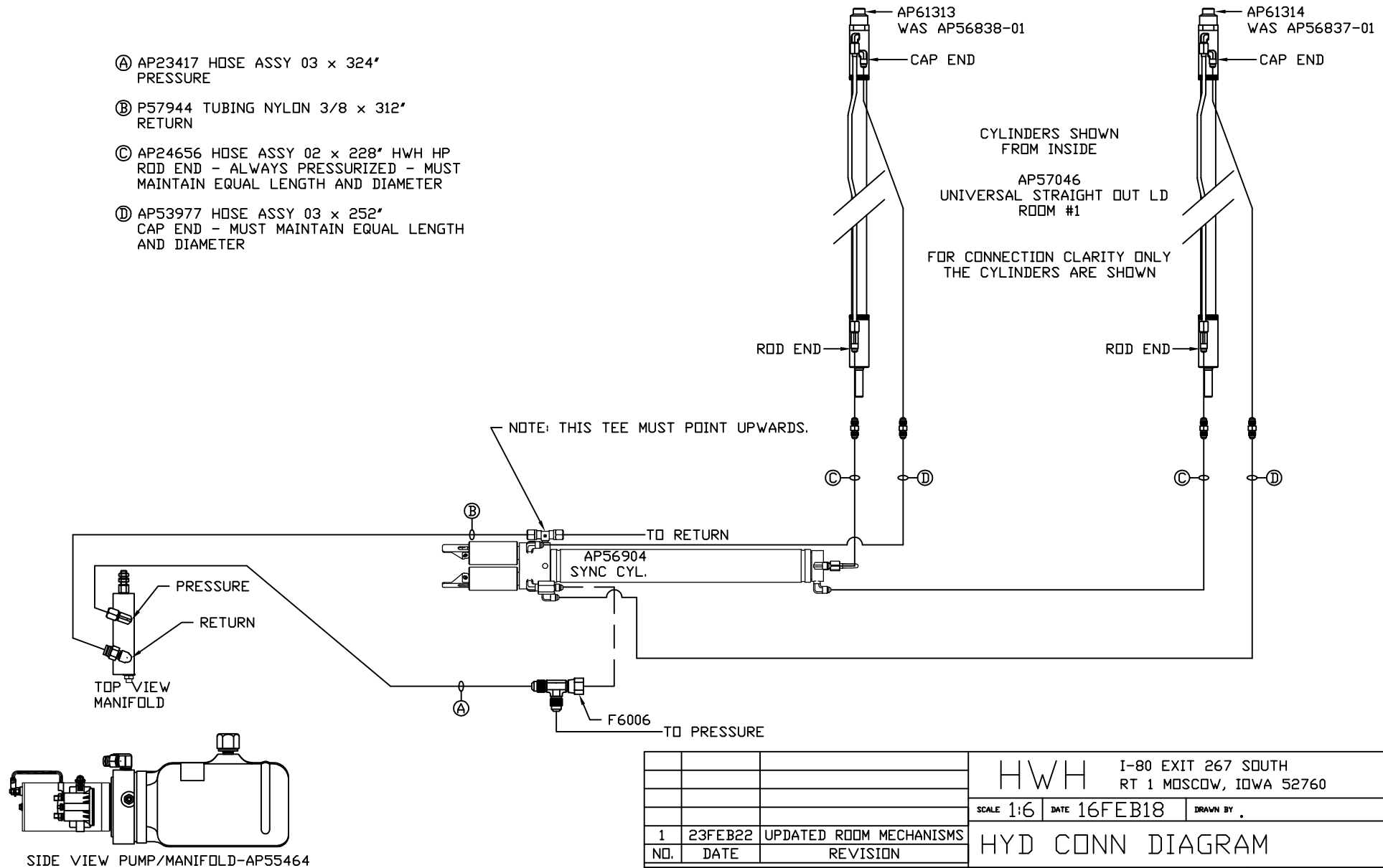


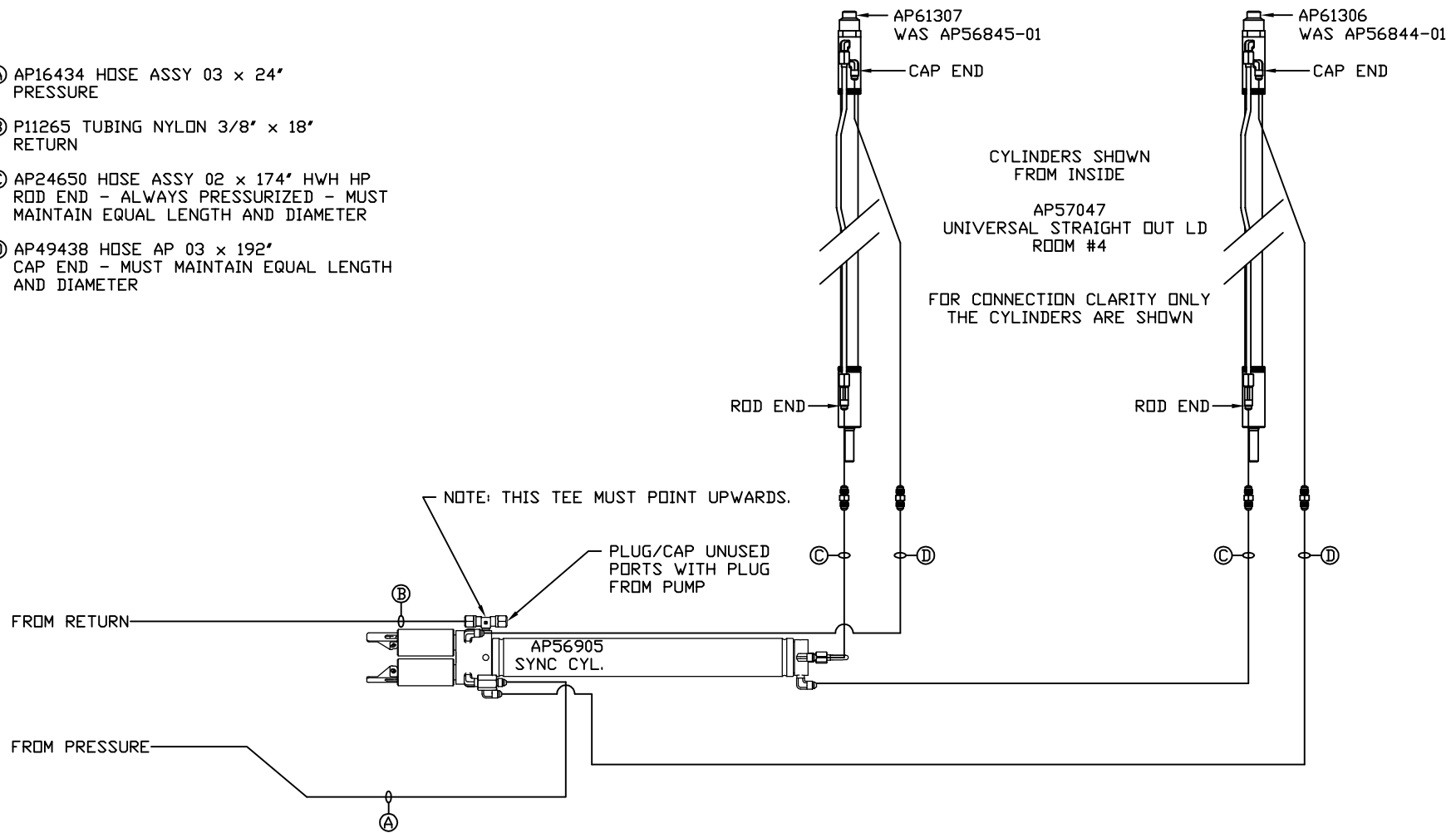
- Ⓐ AP23417 HOSE ASSY 03 x 324" PRESSURE
- Ⓑ P57944 TUBING NYLON 3/8 x 312" RETURN
- Ⓒ AP24656 HOSE ASSY 02 x 228" HWH HP ROD END - ALWAYS PRESSURIZED - MUST MAINTAIN EQUAL LENGTH AND DIAMETER
- Ⓓ AP53977 HOSE ASSY 03 x 252" CAP END - MUST MAINTAIN EQUAL LENGTH AND DIAMETER



NOTE: INSTALLATION MUST CONFORM TO GOOD SHOP PRACTICES, SAE STANDARDS, RVIA STANDARDS, AND OTHER APPLICABLE STANDARDS.

| | | | HWH I-80 EXIT 267 SOUTH RT 1 MOSCOW, IOWA 52760 | | |
|--|---------|-------------------------|--|--|--|
| SCALE 1:6 | | DATE 16FEB18 | DRAWN BY . | | |
| 1 | 23FEB22 | UPDATED ROOM MECHANISMS | | | |
| NO. | DATE | REVISION | | | |
| THE INFORMATION DISCLOSED ON THIS DRAWING IS CONFIDENTIAL AND MUST NOT BE DISCLOSED OR USED IN ANY MANNER WHICH WILL BE DETRIMENTAL TO THE HWH CORPORATION | | | | | |
| TIFFIN | | | DRAWING NUMBER MP71163 A/B | | |

- Ⓐ AP16434 HOSE ASSY 03 x 24' PRESSURE
- Ⓑ P11265 TUBING NYLON 3/8" x 18' RETURN
- Ⓒ AP24650 HOSE ASSY 02 x 174' HWH HP ROD END - ALWAYS PRESSURIZED - MUST MAINTAIN EQUAL LENGTH AND DIAMETER
- Ⓓ AP49438 HOSE AP 03 x 192' CAP END - MUST MAINTAIN EQUAL LENGTH AND DIAMETER



NOTE: INSTALLATION MUST CONFORM TO GOOD SHOP PRACTICES, SAE STANDARDS, RVIA STANDARDS, AND OTHER APPLICABLE STANDARDS.

MP71163 B/B
23FEB22