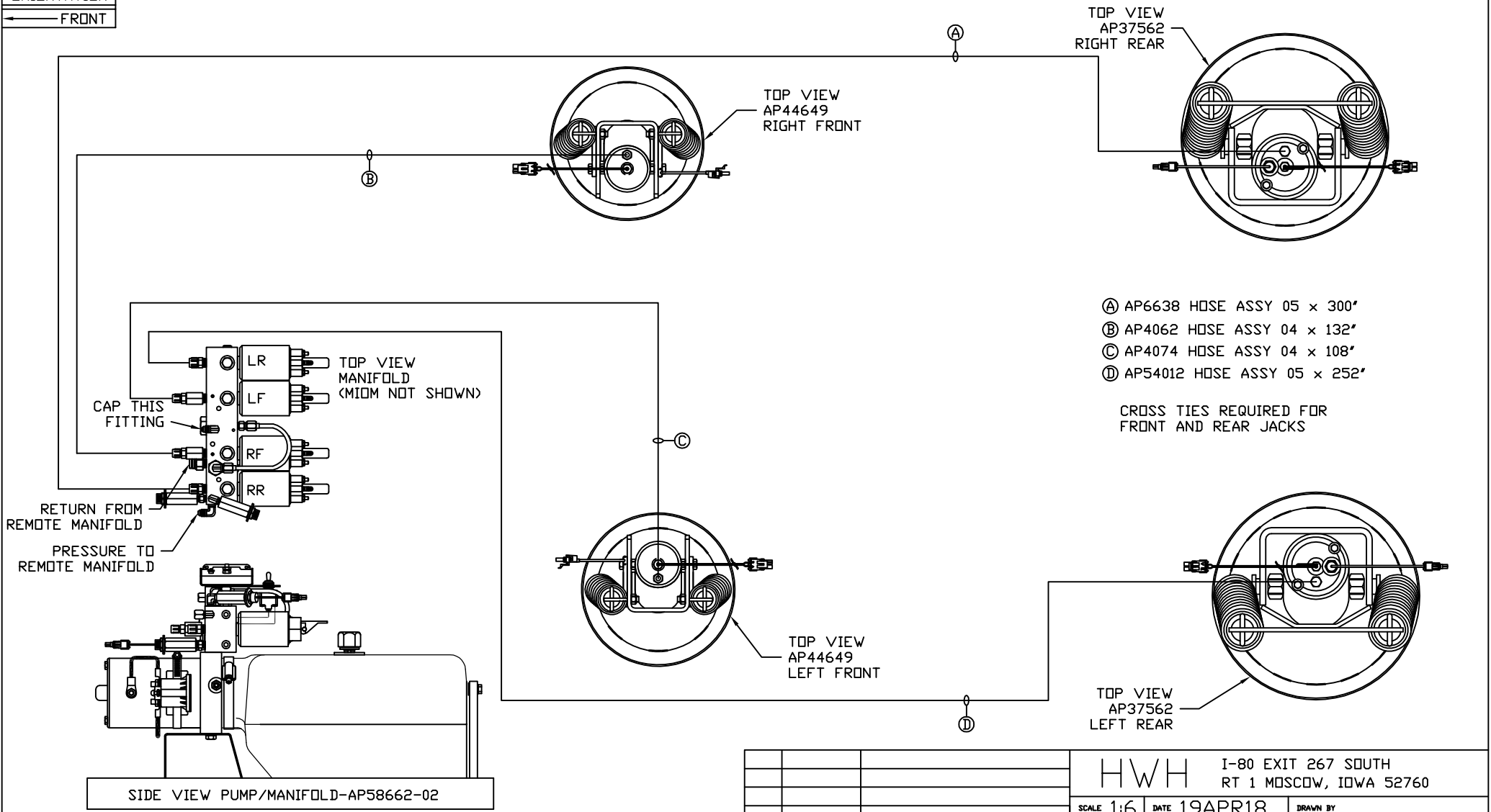


ORIENTATION
← FRONT



- Ⓐ AP6638 HOSE ASSY 05 x 300'
- Ⓑ AP4062 HOSE ASSY 04 x 132'
- Ⓒ AP4074 HOSE ASSY 04 x 108'
- Ⓓ AP54012 HOSE ASSY 05 x 252'

CROSS TIES REQUIRED FOR FRONT AND REAR JACKS

SIDE VIEW PUMP/MANIFOLD-AP58662-02

LOCATION AND ORIENTATION OF PUMP/MANIFOLD ASSEMBLY WILL DIFFER DEPENDING UPON O.E.M.

NOTE: INSTALLATION MUST CONFORM TO GOOD SHOP PRACTICES, SAE STANDARDS, RVIA STANDARDS, AND OTHER APPLICABLE STANDARDS.

LEVELING SYSTEM: AP58882

NO.	DATE	REVISION

HWH I-80 EXIT 267 SOUTH
RT 1 MOSCOW, IOWA 52760

SCALE 1:6 DATE 19APR18 DRAWN BY .

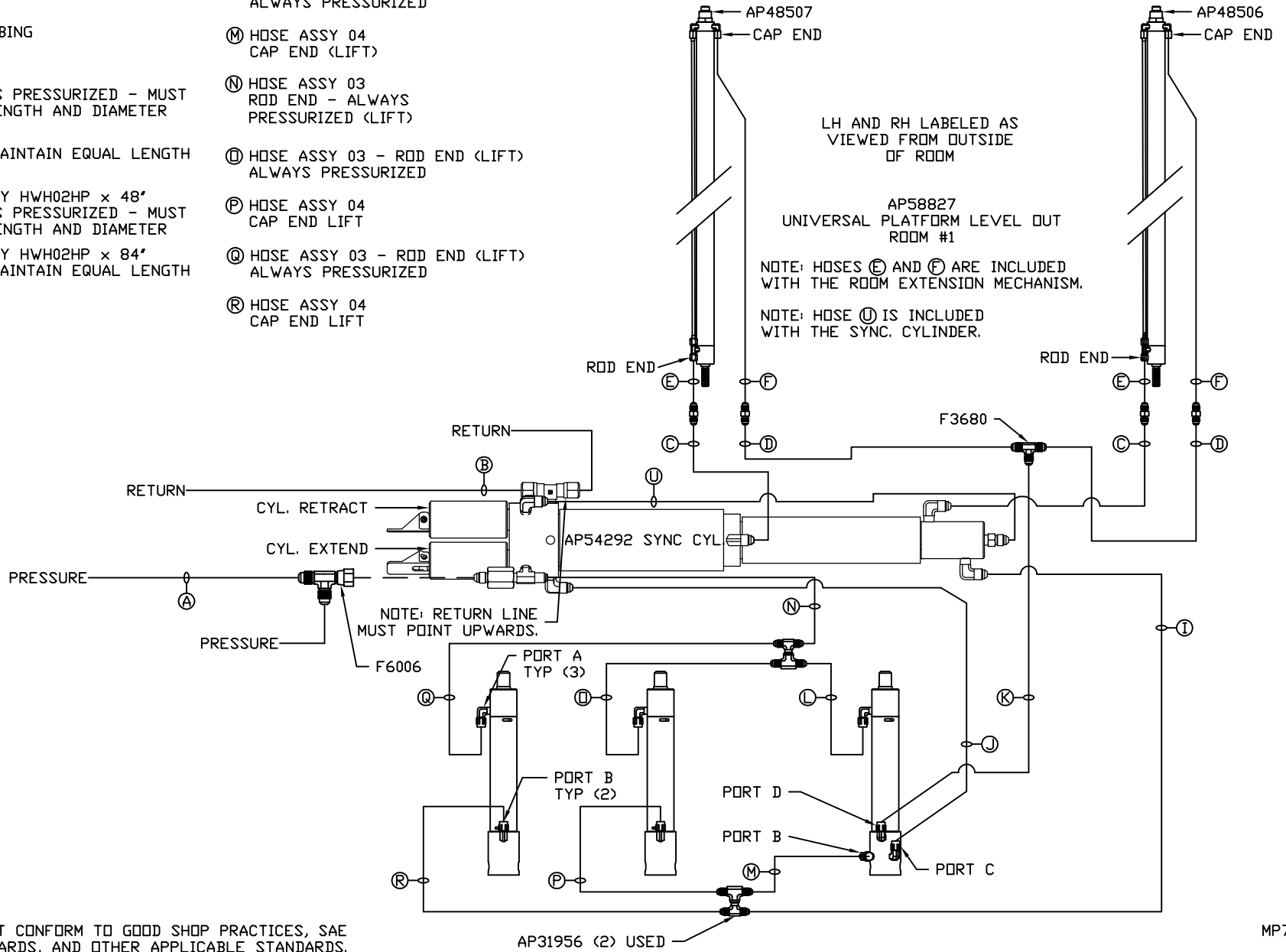
HYD CONN DIAGRAM

MATTHEWS DRAWING NUMBER MP71178 A/C

THE INFORMATION DISCLOSED ON THIS DRAWING IS CONFIDENTIAL AND MUST NOT BE DISCLOSED OR USED IN ANY MANNER WHICH WILL BE DETRIMENTAL TO THE HWH CORPORATION

- (A) HOSE ASSY 04
PRESSURE
- (B) 3/8" OD NYLON TUBING
RETURN
- (C) HOSE ASSY 03
ROD END - ALWAYS PRESSURIZED - MUST
MAINTAIN EQUAL LENGTH AND DIAMETER
- (D) HOSE ASSY 04
CAP END - MUST MAINTAIN EQUAL LENGTH
AND DIAMETER
- (E) AP24632 HOSE ASSY HWH02HP x 48'
ROD END - ALWAYS PRESSURIZED - MUST
MAINTAIN EQUAL LENGTH AND DIAMETER
- (F) AP24636 HOSE ASSY HWH02HP x 84'
CAP END - MUST MAINTAIN EQUAL LENGTH
AND DIAMETER
- (I) HOSE ASSY 04
CAP END (LIFT)
- (J) HOSE ASSY 04
CAP END (ROOM)
- (K) HOSE ASSY 03
CAP END (ROOM)

- (L) HOSE ASSY 03 - ROD END (LIFT)
ALWAYS PRESSURIZED
- (M) HOSE ASSY 04
CAP END (LIFT)
- (N) HOSE ASSY 03
ROD END - ALWAYS
PRESSURIZED (LIFT)
- (O) HOSE ASSY 03 - ROD END (LIFT)
ALWAYS PRESSURIZED
- (P) HOSE ASSY 04
CAP END LIFT
- (Q) HOSE ASSY 03 - ROD END (LIFT)
ALWAYS PRESSURIZED
- (R) HOSE ASSY 04
CAP END LIFT

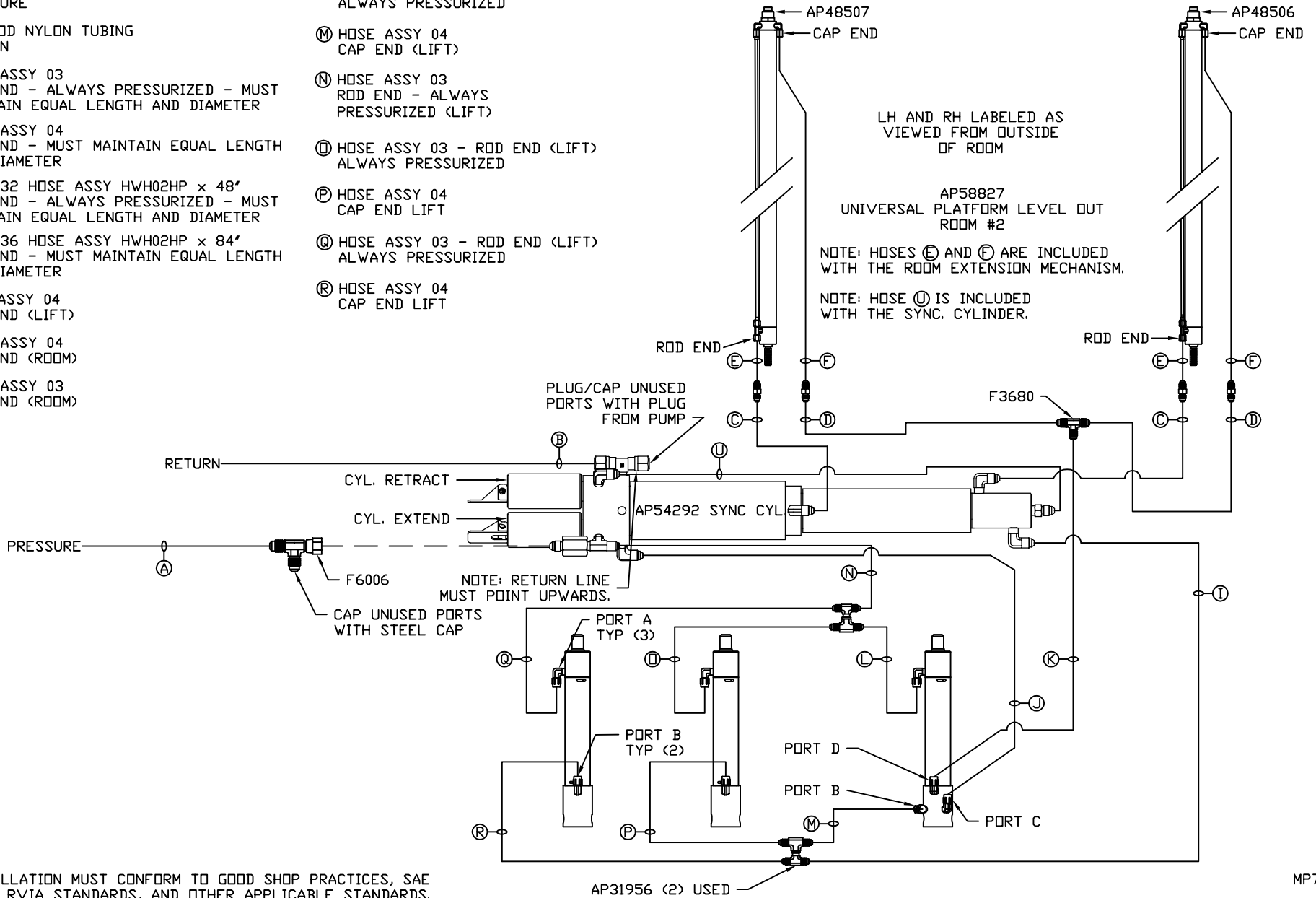


NOTE: INSTALLATION MUST CONFORM TO GOOD SHOP PRACTICES, SAE STANDARDS, RVIA STANDARDS, AND OTHER APPLICABLE STANDARDS.

MP71178 B/C
19APR18

- Ⓐ HOSE ASSY 04
PRESSURE
- Ⓑ 3/8" OD NYLON TUBING
RETURN
- Ⓒ HOSE ASSY 03
ROD END - ALWAYS PRESSURIZED - MUST
MAINTAIN EQUAL LENGTH AND DIAMETER
- Ⓓ HOSE ASSY 04
CAP END - MUST MAINTAIN EQUAL LENGTH
AND DIAMETER
- Ⓔ AP24632 HOSE ASSY HWH02HP x 48'
ROD END - ALWAYS PRESSURIZED - MUST
MAINTAIN EQUAL LENGTH AND DIAMETER
- Ⓕ AP24636 HOSE ASSY HWH02HP x 84'
CAP END - MUST MAINTAIN EQUAL LENGTH
AND DIAMETER
- Ⓖ HOSE ASSY 04
CAP END (LIFT)
- Ⓙ HOSE ASSY 04
CAP END (ROOM)
- Ⓚ HOSE ASSY 03
CAP END (ROOM)

- Ⓛ HOSE ASSY 03 - ROD END (LIFT)
ALWAYS PRESSURIZED
- Ⓜ HOSE ASSY 04
CAP END (LIFT)
- Ⓝ HOSE ASSY 03
ROD END - ALWAYS
PRESSURIZED (LIFT)
- Ⓟ HOSE ASSY 03 - ROD END (LIFT)
ALWAYS PRESSURIZED
- Ⓠ HOSE ASSY 04
CAP END LIFT
- Ⓡ HOSE ASSY 03 - ROD END (LIFT)
ALWAYS PRESSURIZED
- Ⓢ HOSE ASSY 04
CAP END LIFT



NOTE: INSTALLATION MUST CONFORM TO GOOD SHOP PRACTICES, SAE STANDARDS, RVIA STANDARDS, AND OTHER APPLICABLE STANDARDS.

AP31956 (2) USED

MP71178 C/C
19APR18