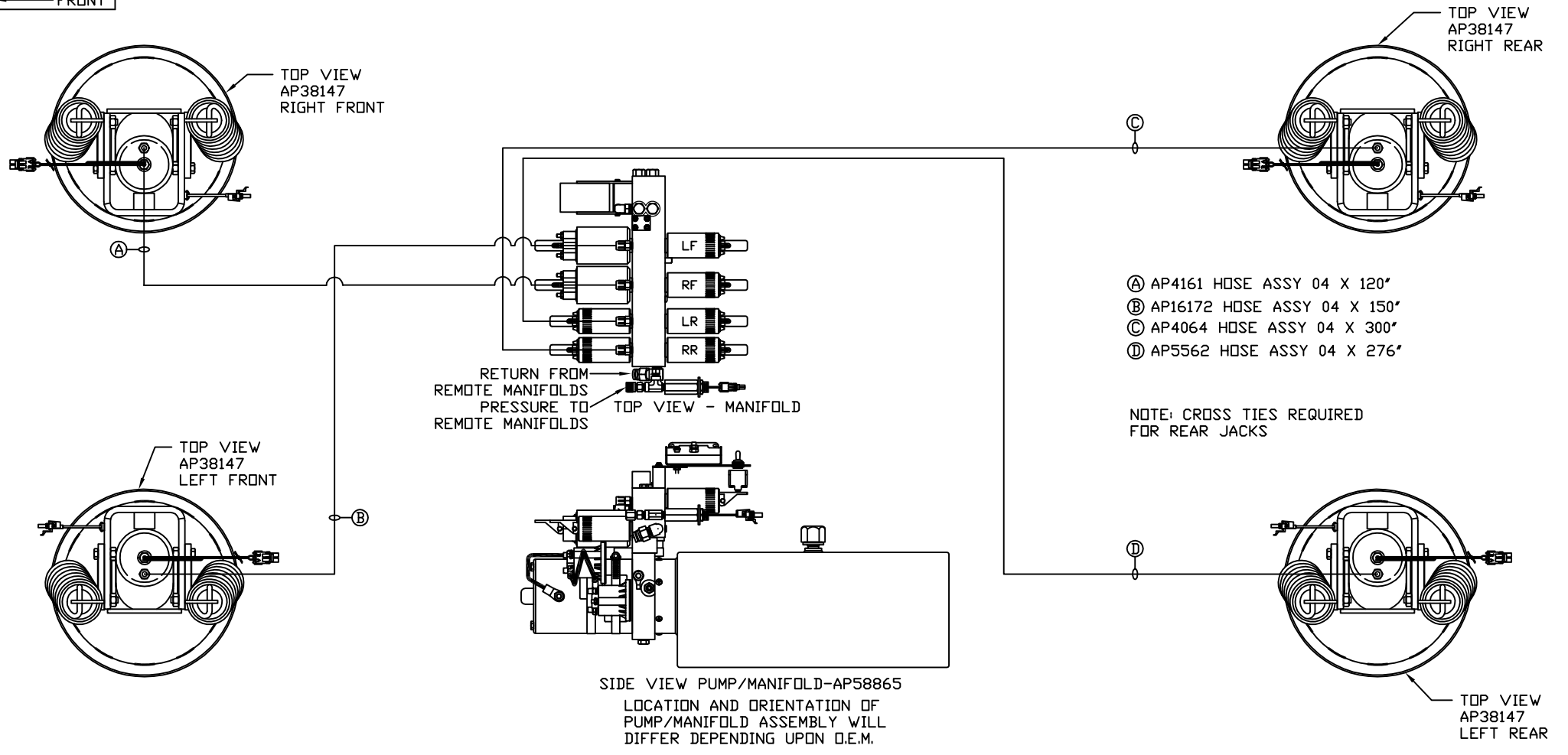


ORIENTATION
← FRONT



- Ⓐ AP4161 HOSE ASSY 04 X 120"
- Ⓑ AP16172 HOSE ASSY 04 X 150"
- Ⓒ AP4064 HOSE ASSY 04 X 300"
- Ⓓ AP5562 HOSE ASSY 04 X 276"

NOTE: CROSS TIES REQUIRED FOR REAR JACKS

NOTE: INSTALLATION MUST CONFORM TO GOOD SHOP PRACTICES, SAE STANDARDS, RVIA STANDARDS, AND OTHER APPLICABLE STANDARDS.

LEVELING SYSTEM: AP55089

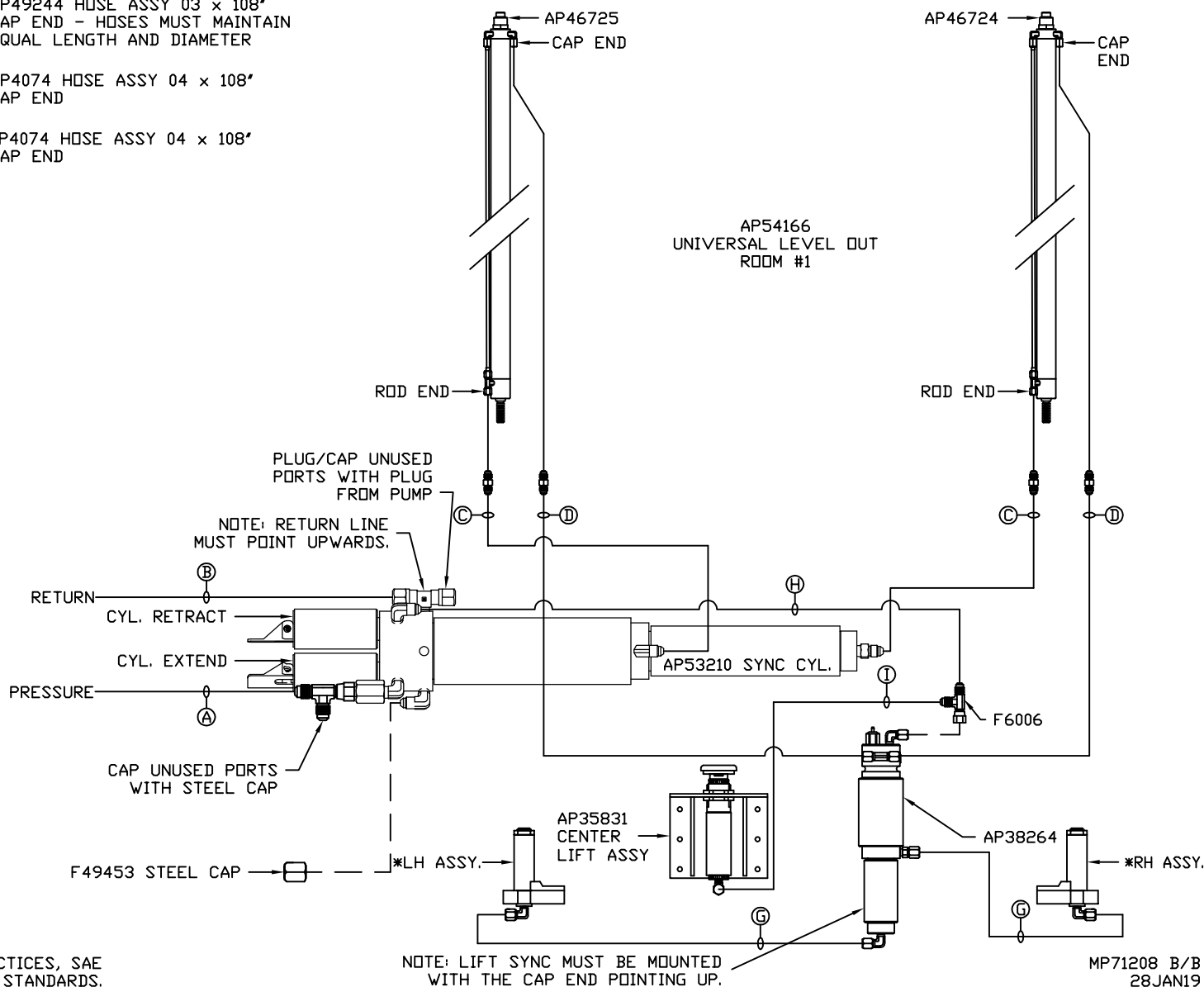
		HWH I-80 EXIT 267 SOUTH RT 1 MOSCOW, IOWA 52760	
		SCALE 1:6	DATE 28JAN19
		DRAWN BY .	
		HYD CONN DIAGRAM	
NO.	DATE	REVISION	
		THE INFORMATION DISCLOSED ON THIS DRAWING IS CONFIDENTIAL AND MUST NOT BE DISCLOSED OR USED IN ANY MANNER WHICH WILL BE DETRIMENTAL TO THE HWH CORPORATION	
		LIFELINE	DRAWING NUMBER MP71208 A/B

*: PART OF THE ROOM
EXTENSION MECHANISM.

AP59921 HOSE KIT 1 ROOM/ULO/CL

- Ⓐ AP7385 HOSE ASSY 04 x 252' PRESSURE
- Ⓑ .375" OD NYLON TUBING RETURN
- Ⓒ AP49244 HOSE ASSY 03 x 108" ROD END - ALWAYS PRESSURIZED HOSES MUST MAINTAIN EQUAL LENGTH AND DIAMETER
- Ⓓ AP4074 HOSE ASSY 04 x 108" CAP END - HOSES MUST MAINTAIN EQUAL LENGTH AND DIAMETER

- Ⓔ AP49244 HOSE ASSY 03 x 108" CAP END - HOSES MUST MAINTAIN EQUAL LENGTH AND DIAMETER
- Ⓕ AP4074 HOSE ASSY 04 x 108" CAP END
- Ⓖ AP4074 HOSE ASSY 04 x 108" CAP END



NOTE: INSTALLATION MUST CONFORM TO GOOD SHOP PRACTICES, SAE STANDARDS, RVIA STANDARDS, AND OTHER APPLICABLE STANDARDS.

MP71208 B/B
28JAN19