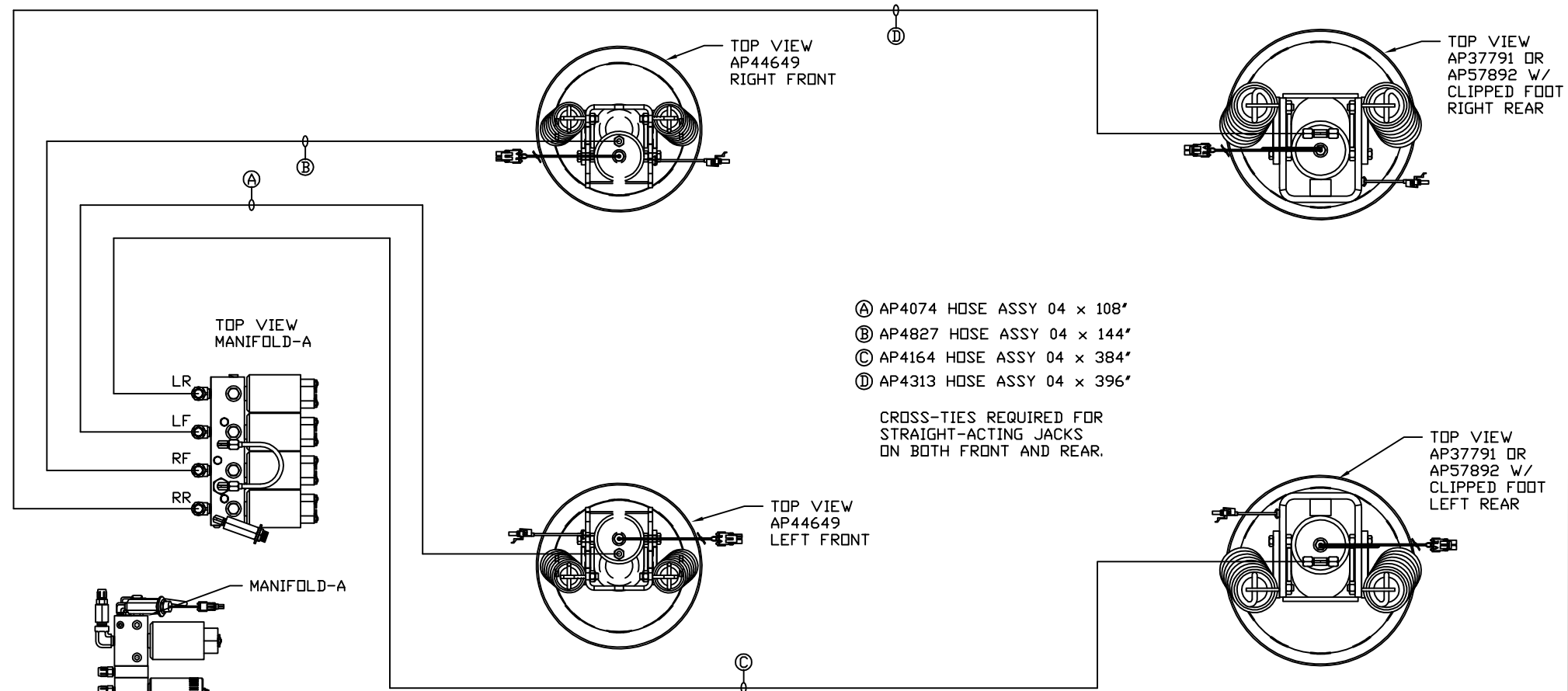
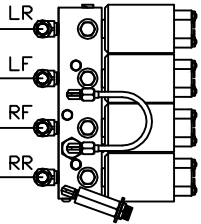


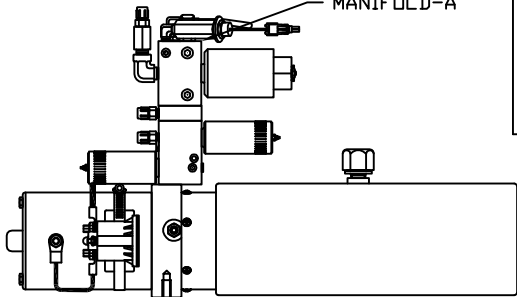
ORIENTATION
← FRONT



TOP VIEW
MANIFOLD-A



MANIFOLD-A



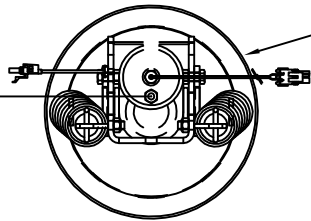
SIDE VIEW PUMP/MANIFOLD-AP54806

LOCATION AND ORIENTATION OF
PUMP/MANIFOLD ASSEMBLY WILL
DIFFER DEPENDING UPON O.E.M.

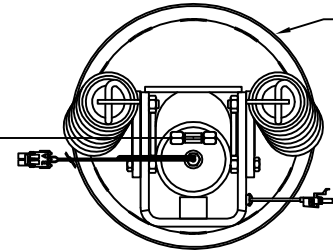
- Ⓐ AP4074 HOSE ASSY 04 x 108"
- Ⓑ AP4827 HOSE ASSY 04 x 144"
- Ⓒ AP4164 HOSE ASSY 04 x 384"
- Ⓓ AP4313 HOSE ASSY 04 x 396"

CROSS-TIES REQUIRED FOR
STRAIGHT-ACTING JACKS
ON BOTH FRONT AND REAR.

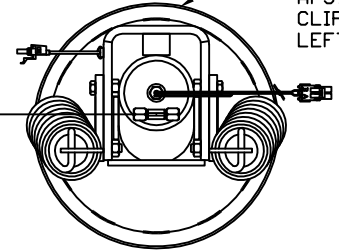
TOP VIEW
AP44649
LEFT FRONT



TOP VIEW
AP37791 OR
AP57892 W/
CLIPPED FOOT
RIGHT REAR



TOP VIEW
AP37791 OR
AP57892 W/
CLIPPED FOOT
LEFT REAR

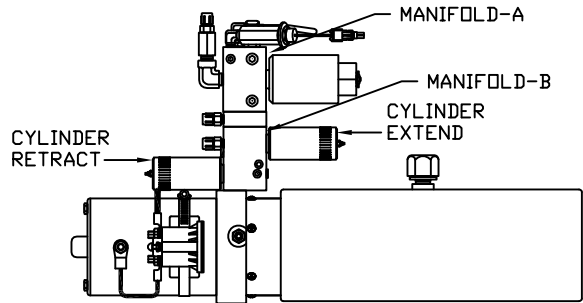
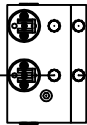


		HWH		I-80 EXIT 267 SOUTH RT 1 MOSCOW, IOWA 52760	
		SCALE 1:6	DATE 30JUL19	DRAWN BY .	
		HYD CONN DIAGRAM			
		TIFFIN		DRAWING NUMBER MP71229 A/C	
SYNC KIT: AP53377	NO.	DATE	REVISION		
PUMP KIT: AP51752	1	29OCT19	UPDATED HOSES		
JACK KIT: AP52289	THE INFORMATION DISCLOSED ON THIS DRAWING IS CONFIDENTIAL AND MUST NOT BE DISCLOSED OR USED IN ANY MANNER WHICH WILL BE DETRIMENTAL TO THE HWH CORPORATION				

NOTE: INSTALLATION MUST CONFORM TO GOOD SHOP PRACTICES, SAE STANDARDS, RVIA STANDARDS, AND OTHER APPLICABLE STANDARDS.

- Ⓐ AP4074 HOSE ASSY 04 x 108"
ROD END - ALWAYS PRESSURIZED
- Ⓑ AP4161 HOSE ASSY 04 x 120"
CAP END
- Ⓒ AP49517 HOSE ASSY 03 x 180"
ROD END - ALWAYS PRESSURIZED - MUST
MAINTAIN EQUAL LENGTH AND DIAMETER
- Ⓓ AP5965 HOSE ASSY 04 x 180"
CAP END - MUST MAINTAIN EQUAL LENGTH
AND DIAMETER

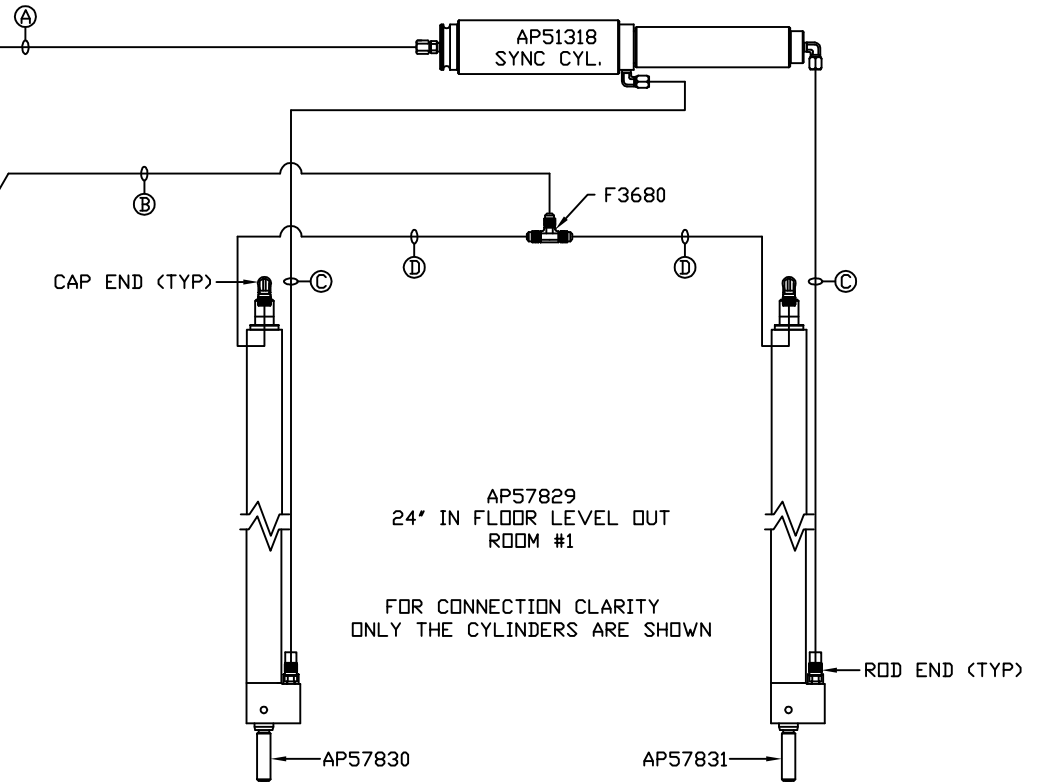
FRONT VIEW
MANIFOLD-B



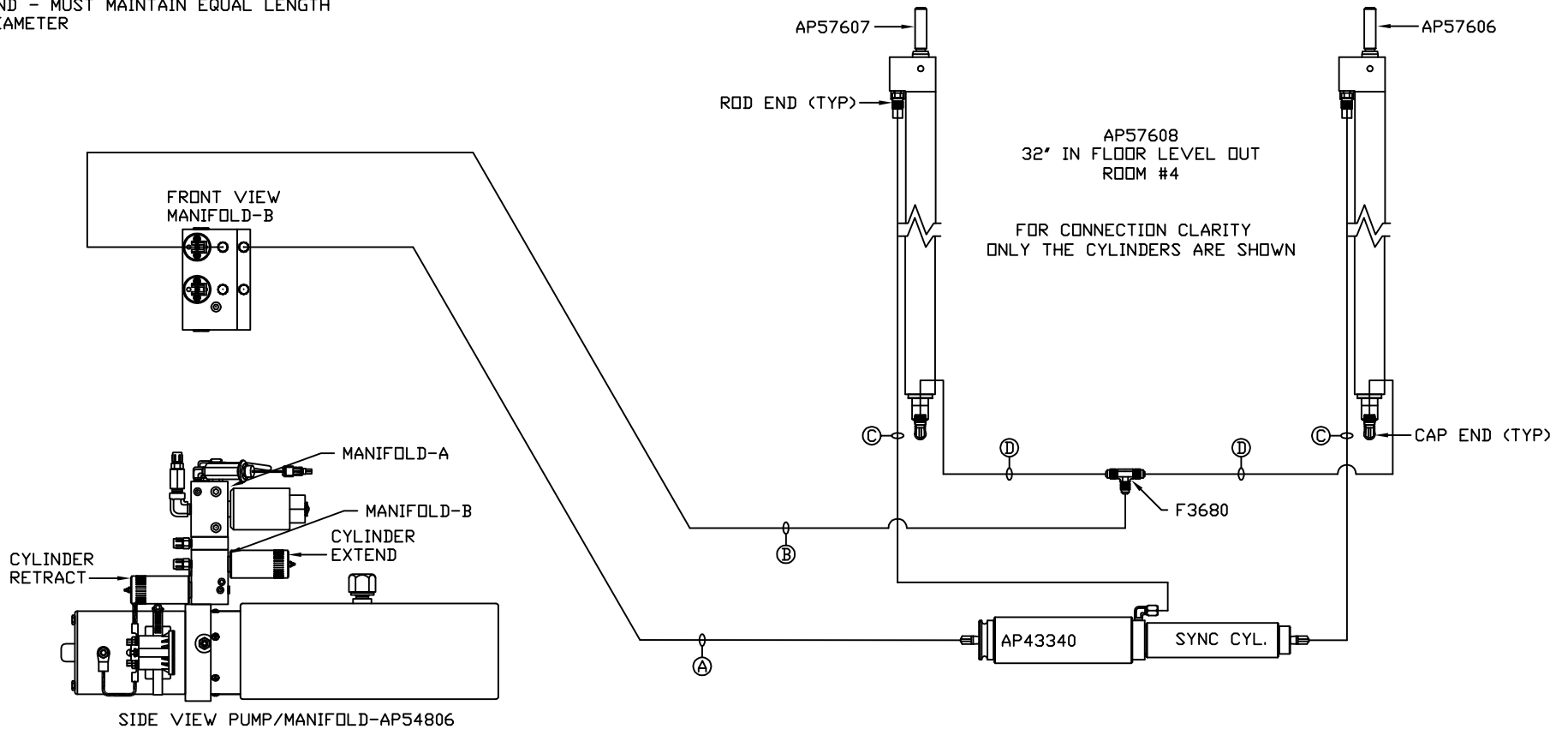
SIDE VIEW PUMP/MANIFOLD-AP54806

LOCATION AND ORIENTATION OF
PUMP/MANIFOLD ASSEMBLY WILL
DIFFER DEPENDING UPON O.E.M.

NOTE: INSTALLATION MUST CONFORM TO GOOD SHOP PRACTICES, SAE
STANDARDS, RVIA STANDARDS, AND OTHER APPLICABLE STANDARDS.



- Ⓐ AP5352 HOSE ASSY 04 x 96'
ROD END - ALWAYS PRESSURIZED
- Ⓑ AP10566 HOSE ASSY 04 x 102'
CAP END
- Ⓒ AP51589 HOSE ASSY 03 x 228'
WAS AP50847 HOSE ASSY 03 x 204'
ROD END - ALWAYS PRESSURIZED - MUST
MAINTAIN EQUAL LENGTH AND DIAMETER
- Ⓓ AP5924 HOSE ASSY 04 x 228'
CAP END - MUST MAINTAIN EQUAL LENGTH
AND DIAMETER



SIDE VIEW PUMP/MANIFOLD-AP54806

LOCATION AND ORIENTATION OF
PUMP/MANIFOLD ASSEMBLY WILL
DIFFER DEPENDING UPON O.E.M.

NOTE: INSTALLATION MUST CONFORM TO GOOD SHOP PRACTICES, SAE
STANDARDS, RVIA STANDARDS, AND OTHER APPLICABLE STANDARDS.

MP71229 C/C
29OCT19