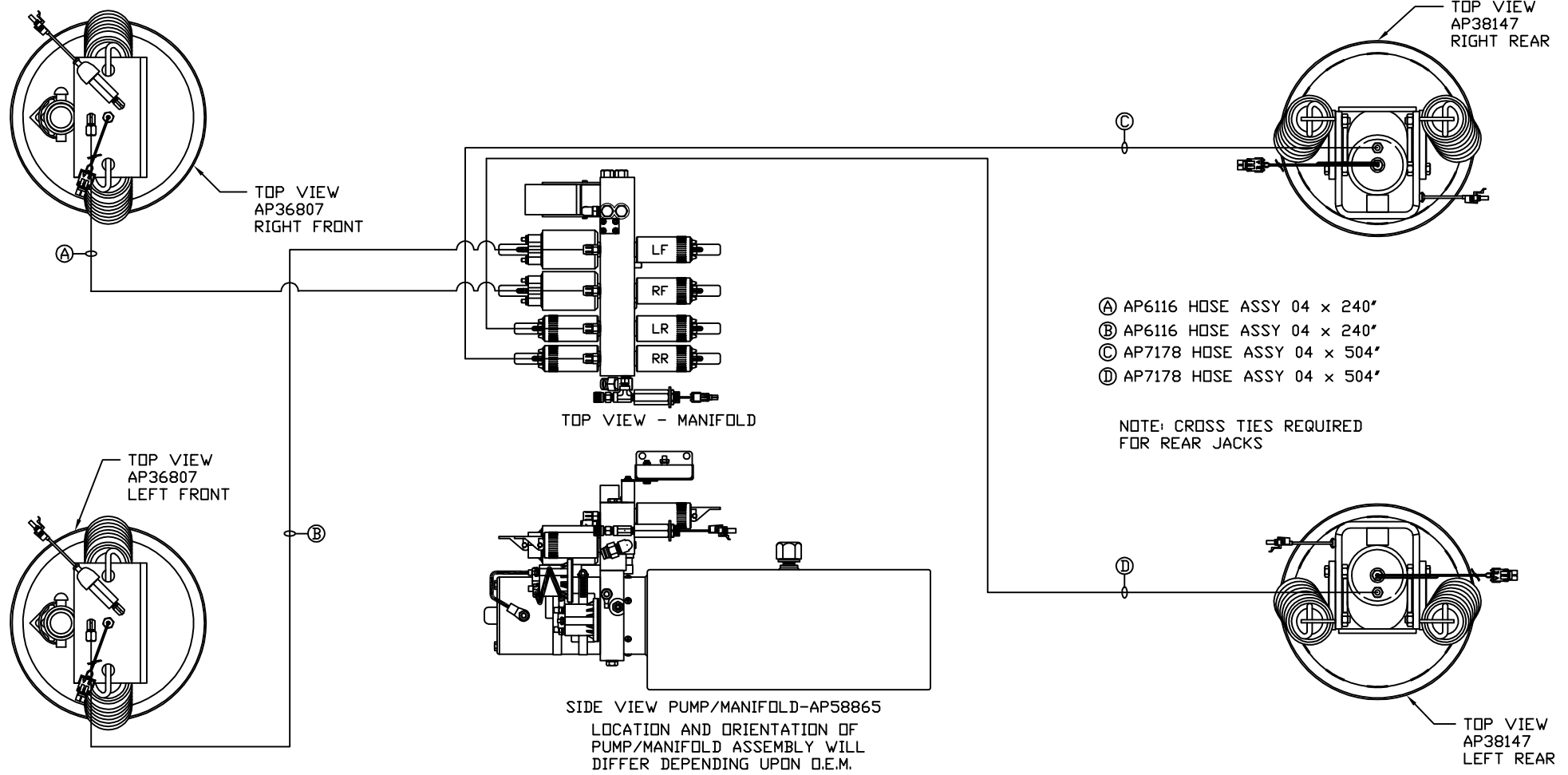


ORIENTATION
← FRONT



- Ⓐ AP6116 HOSE ASSY 04 x 240"
- Ⓑ AP6116 HOSE ASSY 04 x 240"
- Ⓒ AP7178 HOSE ASSY 04 x 504"
- Ⓓ AP7178 HOSE ASSY 04 x 504"

NOTE: CROSS TIES REQUIRED FOR REAR JACKS

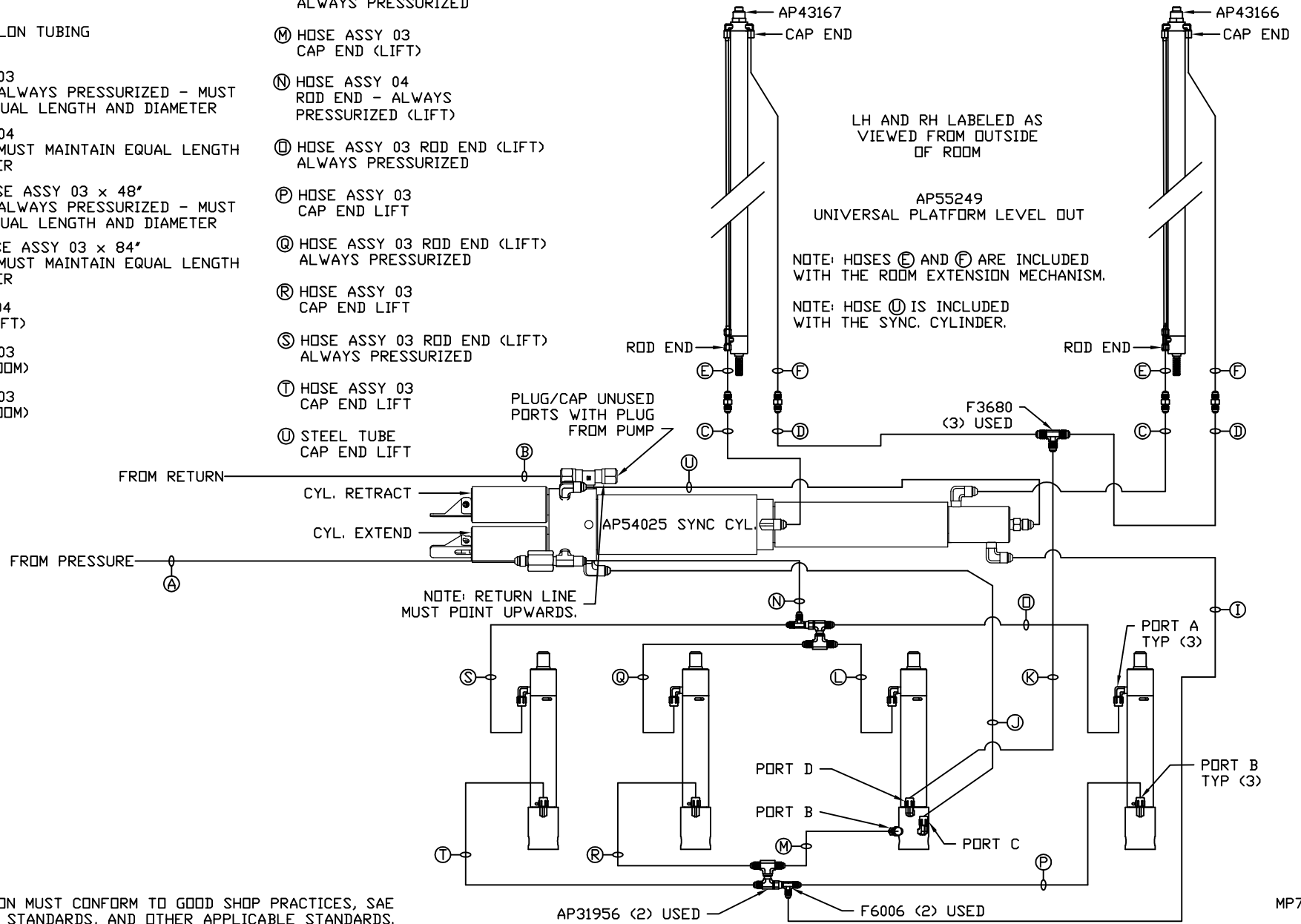
NOTE: INSTALLATION MUST CONFORM TO GOOD SHOP PRACTICES, SAE STANDARDS, RVIA STANDARDS, AND OTHER APPLICABLE STANDARDS.

LEVELING SYSTEM: AP54164

		HWH		I-80 EXIT 267 SOUTH RT 1 MOSCOW, IOWA 52760	
		SCALE 1:6	DATE 08OCT19	DRAWN BY .	
		HYD CONN DIAGRAM			
NO.	DATE	REVISION			
		LIFELINE		DRAWING NUMBER MP71242 A/B	
<small>THE INFORMATION DISCLOSED ON THIS DRAWING IS CONFIDENTIAL AND MUST NOT BE DISCLOSED OR USED IN ANY MANNER WHICH WILL BE DETRIMENTAL TO THE HWH CORPORATION</small>					

- (A) HOSE ASSY 04
PRESSURE
- (B) .375" OD NYLON TUBING
RETURN
- (C) HOSE ASSY 03
ROD END - ALWAYS PRESSURIZED - MUST
MAINTAIN EQUAL LENGTH AND DIAMETER
- (D) HOSE ASSY 04
CAP END - MUST MAINTAIN EQUAL LENGTH
AND DIAMETER
- (E) AP50907 HOSE ASSY 03 x 48"
ROD END - ALWAYS PRESSURIZED - MUST
MAINTAIN EQUAL LENGTH AND DIAMETER
- (F) AP50671 HOSE ASSY 03 x 84"
CAP END - MUST MAINTAIN EQUAL LENGTH
AND DIAMETER
- (I) HOSE ASSY 04
CAP END (LIFT)
- (J) HOSE ASSY 03
CAP END (ROOM)
- (K) HOSE ASSY 03
CAP END (ROOM)

- (L) HOSE ASSY 03 ROD END (LIFT)
ALWAYS PRESSURIZED
- (M) HOSE ASSY 03
CAP END (LIFT)
- (N) HOSE ASSY 04
ROD END - ALWAYS
PRESSURIZED (LIFT)
- (O) HOSE ASSY 03 ROD END (LIFT)
ALWAYS PRESSURIZED
- (P) HOSE ASSY 03
CAP END LIFT
- (Q) HOSE ASSY 03 ROD END (LIFT)
ALWAYS PRESSURIZED
- (R) HOSE ASSY 03
CAP END LIFT
- (S) HOSE ASSY 03 ROD END (LIFT)
ALWAYS PRESSURIZED
- (T) HOSE ASSY 03
CAP END LIFT
- (U) STEEL TUBE
CAP END LIFT



NOTE: INSTALLATION MUST CONFORM TO GOOD SHOP PRACTICES, SAE STANDARDS, RVIA STANDARDS, AND OTHER APPLICABLE STANDARDS.

MP71242 B/B
080CT19