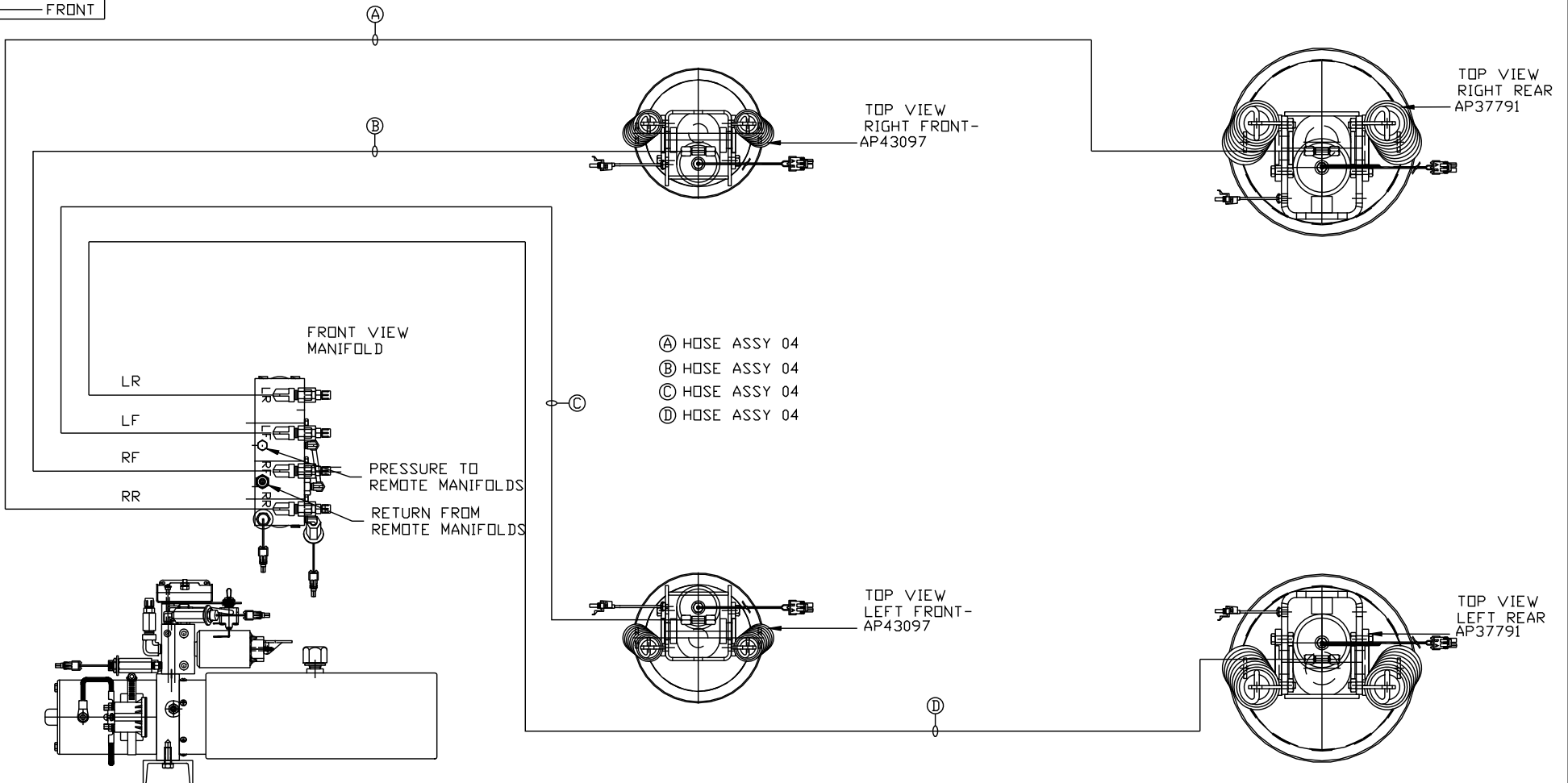


ORIENTATION  
← FRONT



- Ⓐ HOSE ASSY 04
- Ⓑ HOSE ASSY 04
- Ⓒ HOSE ASSY 04
- Ⓓ HOSE ASSY 04

SIDE VIEW PUMP/MANIFOLD-AP58661-01

LOCATION AND ORIENTATION OF PUMP/MANIFOLD ASSEMBLY WILL DIFFER DEPENDING UPON O.E.M.

NOTE: INSTALLATION MUST CONFORM TO GOOD SHOP PRACTICES, SAE STANDARDS, RVIA STANDARDS, AND OTHER APPLICABLE STANDARDS.

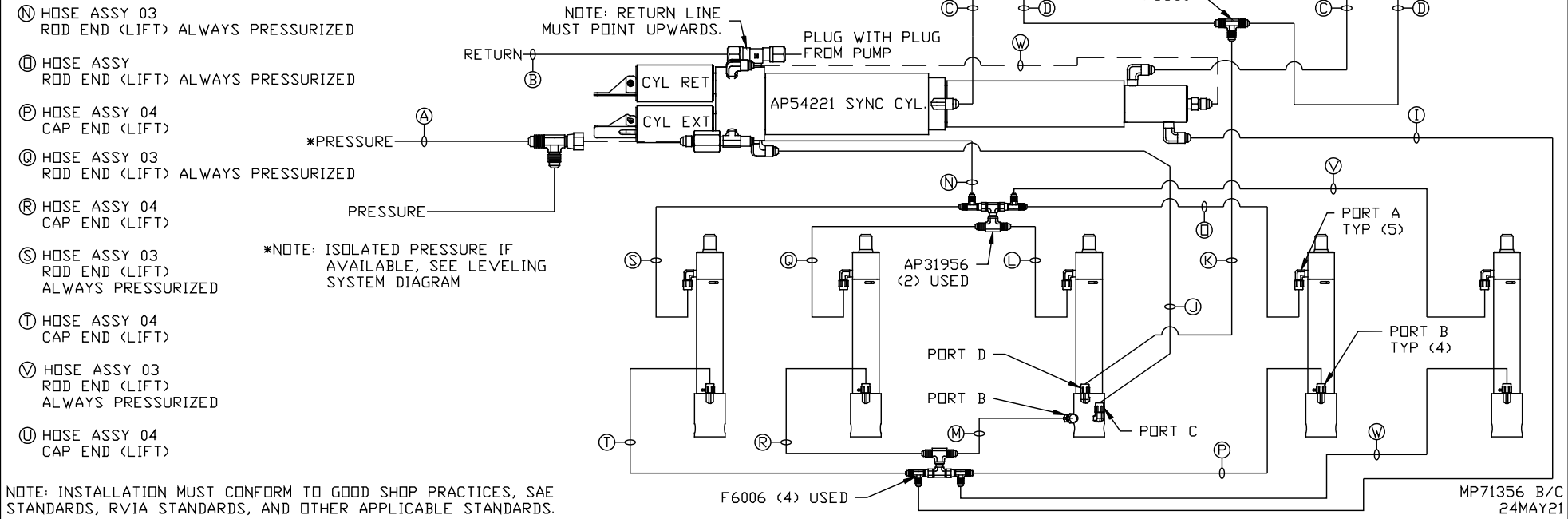
PARTS LIST: PL62638

		HWH I-80 EXIT 267 SOUTH RT 1 MOSCOW, IOWA 52760	
		SCALE 1:6	DATE 24MAY21
		DRAWN BY .	
		HYD CONN DIAGRAM	
NO.	DATE	REVISION	
		THE INFORMATION DISCLOSED ON THIS DRAWING IS CONFIDENTIAL AND MUST NOT BE DISCLOSED OR USED IN ANY MANNER WHICH WILL BE DETRIMENTAL TO THE HWH CORPORATION	
		NEWMAR	DRAWING NUMBER MP71356 A/C

- Ⓐ HOSE ASSY 04  
PRESSURE
- Ⓑ .375" OD NYLON TUBING  
RETURN
- Ⓒ HOSE ASSY 03  
ROD END - ALWAYS PRESSURIZED  
HOSES MUST BE HIGH PRESSURE  
AND OF EQUAL LENGTH AND DIAMETER
- Ⓓ HOSE ASSY 04  
CAP END - HOSES MUST MAINTAIN  
EQUAL LENGTH AND DIAMETER
- Ⓛ AP HOSE ASSY 04  
CAP END (LIFT)
- Ⓜ HOSE ASSY 04  
CAP END (ROOM)
- Ⓚ HOSE ASSY 03  
CAP END (ROOM)
- Ⓛ HOSE ASSY 03  
ROD END (LIFT) ALWAYS PRESSURIZED
- Ⓜ HOSE ASSY 04  
CAP END (LIFT)
- Ⓝ HOSE ASSY 03  
ROD END (LIFT) ALWAYS PRESSURIZED
- Ⓞ HOSE ASSY 03  
ROD END (LIFT) ALWAYS PRESSURIZED
- Ⓟ HOSE ASSY 04  
CAP END (LIFT)
- Ⓠ HOSE ASSY 03  
ROD END (LIFT) ALWAYS PRESSURIZED
- Ⓡ HOSE ASSY 04  
CAP END (LIFT)
- Ⓢ HOSE ASSY 03  
ROD END (LIFT)  
ALWAYS PRESSURIZED
- Ⓣ HOSE ASSY 04  
CAP END (LIFT)
- Ⓤ HOSE ASSY 03  
ROD END (LIFT)  
ALWAYS PRESSURIZED
- Ⓡ HOSE ASSY 04  
CAP END (LIFT)

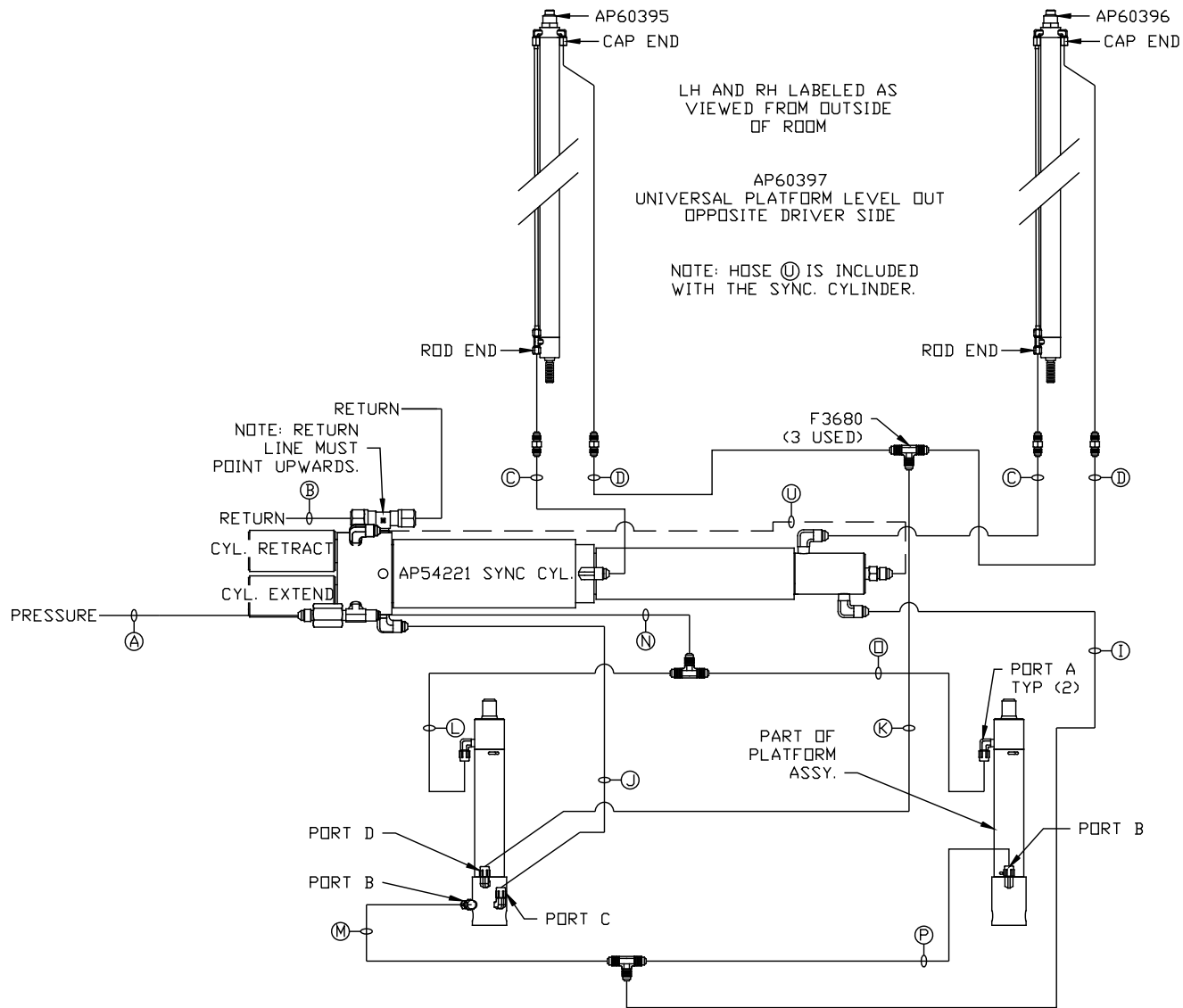
NOTES:

FOR CONNECTION CLARITY ONLY THE CYLINDERS ARE SHOWN.  
HOSE Ⓢ IS INCLUDED WITH THE SYNC. CYLINDER.



AP60397  
ROOM KIT  
DRIVER SIDE

MP71356 B/C  
24MAY21



- (A) HOSE ASSY 04  
PRESSURE
- (B) .375" OD NYLON TUBING  
RETURN
- (C) HOSE ASSY 03  
ROD END - ALWAYS PRESSURIZED - MUST  
BE HIGH PRESSURE HOSES OF EQUAL  
LENGTH AND DIAMETER
- (D) HOSE ASSY 04  
CAP END - MUST MAINTAIN EQUAL LENGTH  
AND DIAMETER
- (I) HOSE ASSY 04  
CAP END (LIFT)
- (J) HOSE ASSY 03  
CAP END (ROOM)
- (K) HOSE ASSY 03  
CAP END (ROOM)
- (L) HOSE ASSY 03  
ROD END (LIFT) - ALWAYS PRESSURIZED
- (M) HOSE ASSY 03  
CAP END (LIFT)
- (N) HOSE ASSY 04  
ROD END - ALWAYS PRESSURIZED (LIFT)
- (O) HOSE ASSY 03  
ROD END (LIFT) - ALWAYS PRESSURIZED
- (P) HOSE ASSY 03  
CAP END LIFT
- (U) STEEL TUBE  
CAP END (LIFT)

NOTE: INSTALLATION MUST CONFORM TO GOOD SHOP PRACTICES, SAE STANDARDS, RVIA STANDARDS, AND OTHER APPLICABLE STANDARDS.

MP71356 C/C  
24MAY21