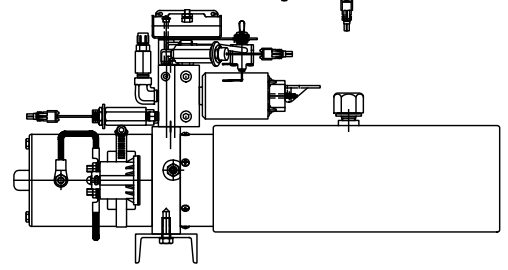
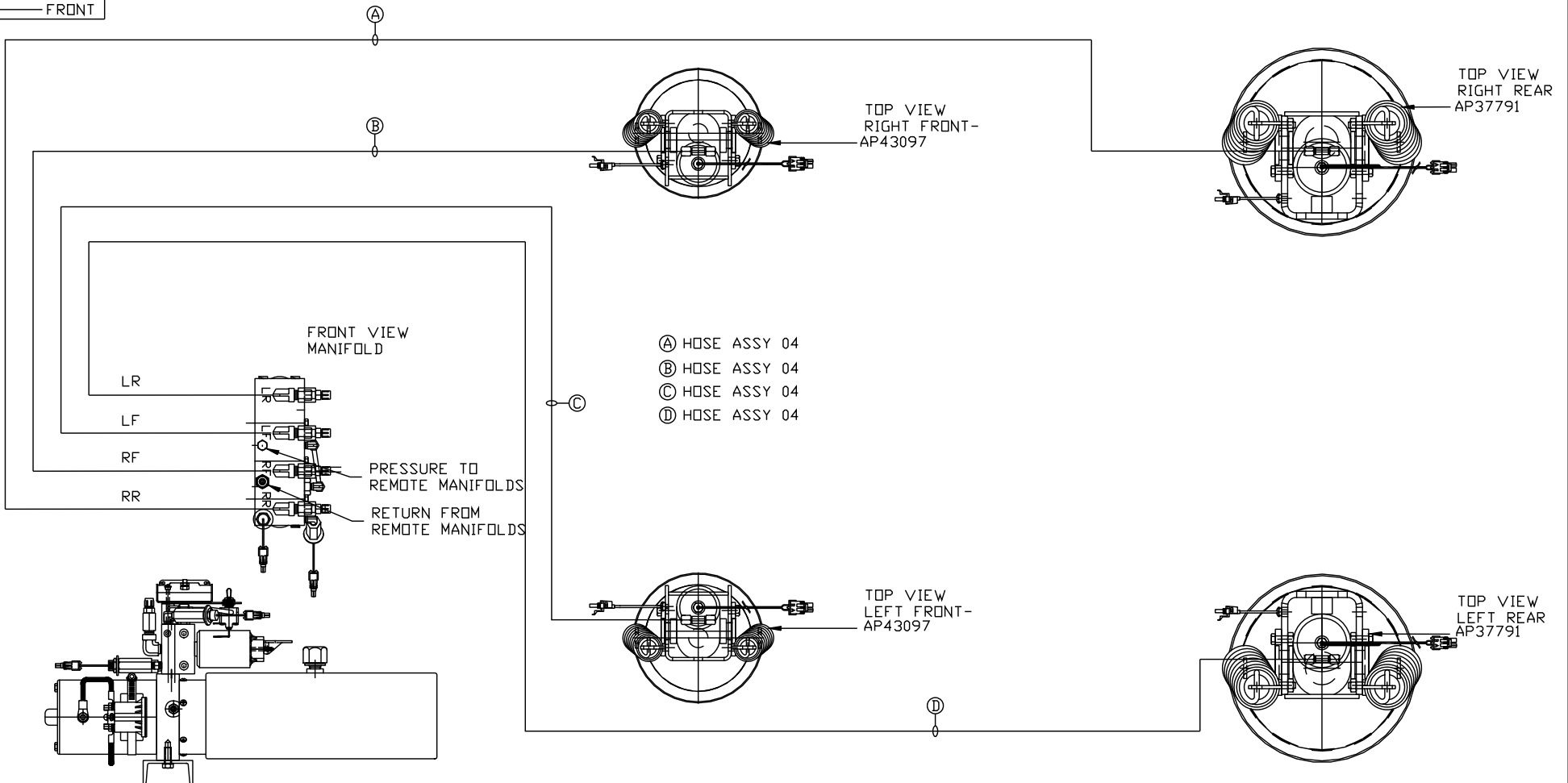


ORIENTATION  
← FRONT



LOCATION AND ORIENTATION OF PUMP/MANIFOLD ASSEMBLY WILL DIFFER DEPENDING UPON O.E.M.

NOTE: INSTALLATION MUST CONFORM TO GOOD SHOP PRACTICES, SAE STANDARDS, RVIA STANDARDS, AND OTHER APPLICABLE STANDARDS.

PARTS LIST: PL62640

		HWH		I-80 EXIT 267 SOUTH RT 1 MOSCOW, IOWA 52760	
		SCALE 1:6	DATE 25MAY21	DRAWN BY .	
		HYD CONN DIAGRAM			
NO.	DATE	REVISION		DRAWING NUMBER	
		THE INFORMATION DISCLOSED ON THIS DRAWING IS CONFIDENTIAL AND MUST NOT BE DISCLOSED OR USED IN ANY MANNER WHICH WILL BE DETRIMENTAL TO THE HWH CORPORATION		NEWMAR	
				MP71358 A/B	

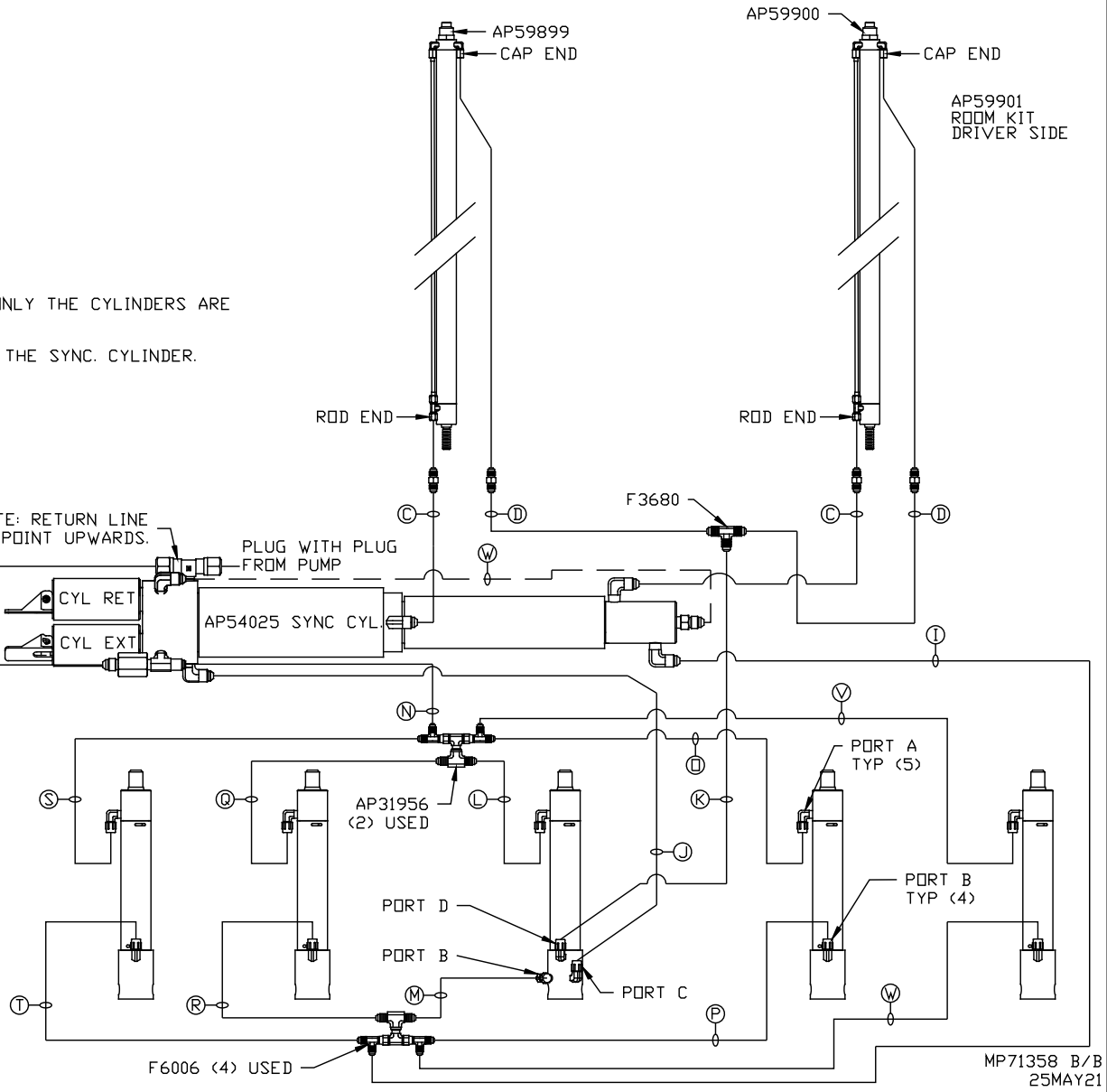
- Ⓐ HOSE ASSY 04  
PRESSURE
- Ⓑ .375" OD NYLON TUBING  
RETURN
- Ⓒ HOSE ASSY 03  
ROD END - ALWAYS PRESSURIZED  
HOSES MUST BE HIGH PRESSURE  
AND OF EQUAL LENGTH AND DIAMETER
- Ⓓ HOSE ASSY 04  
CAP END - HOSES MUST MAINTAIN  
EQUAL LENGTH AND DIAMETER
- Ⓛ AP HOSE ASSY 04  
CAP END (LIFT)
- Ⓜ HOSE ASSY 04  
CAP END (ROOM)
- Ⓚ HOSE ASSY 03  
CAP END (ROOM)
- Ⓛ HOSE ASSY 03  
ROD END (LIFT) ALWAYS PRESSURIZED
- Ⓝ HOSE ASSY 04  
CAP END (LIFT)
- Ⓝ HOSE ASSY 03  
ROD END (LIFT) ALWAYS PRESSURIZED
- Ⓛ HOSE ASSY 04  
CAP END (LIFT)
- Ⓛ HOSE ASSY 03  
ROD END (LIFT) ALWAYS PRESSURIZED
- Ⓛ HOSE ASSY 04  
CAP END (LIFT)
- Ⓛ HOSE ASSY 03  
ROD END (LIFT) ALWAYS PRESSURIZED
- Ⓛ HOSE ASSY 04  
CAP END (LIFT)
- Ⓛ HOSE ASSY 03  
ROD END (LIFT) ALWAYS PRESSURIZED
- Ⓛ HOSE ASSY 04  
CAP END (LIFT)
- Ⓛ HOSE ASSY 03  
ROD END (LIFT) ALWAYS PRESSURIZED
- Ⓛ HOSE ASSY 04  
CAP END (LIFT)

NOTES:  
FOR CONNECTION CLARITY ONLY THE CYLINDERS ARE  
SHOWN.  
HOSE Ⓜ IS INCLUDED WITH THE SYNC. CYLINDER.

NOTE: RETURN LINE  
MUST POINT UPWARDS.

PLUG WITH PLUG  
FROM PUMP

\*NOTE: ISOLATED PRESSURE IF  
AVAILABLE, SEE LEVELING  
SYSTEM DIAGRAM



NOTE: INSTALLATION MUST CONFORM TO GOOD SHOP PRACTICES, SAE  
STANDARDS, RVIA STANDARDS, AND OTHER APPLICABLE STANDARDS.

MP71358 B/B  
25MAY21