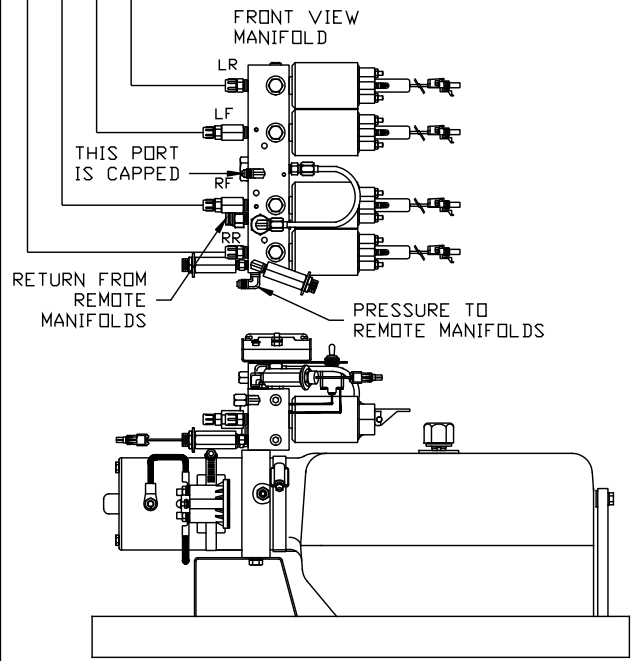
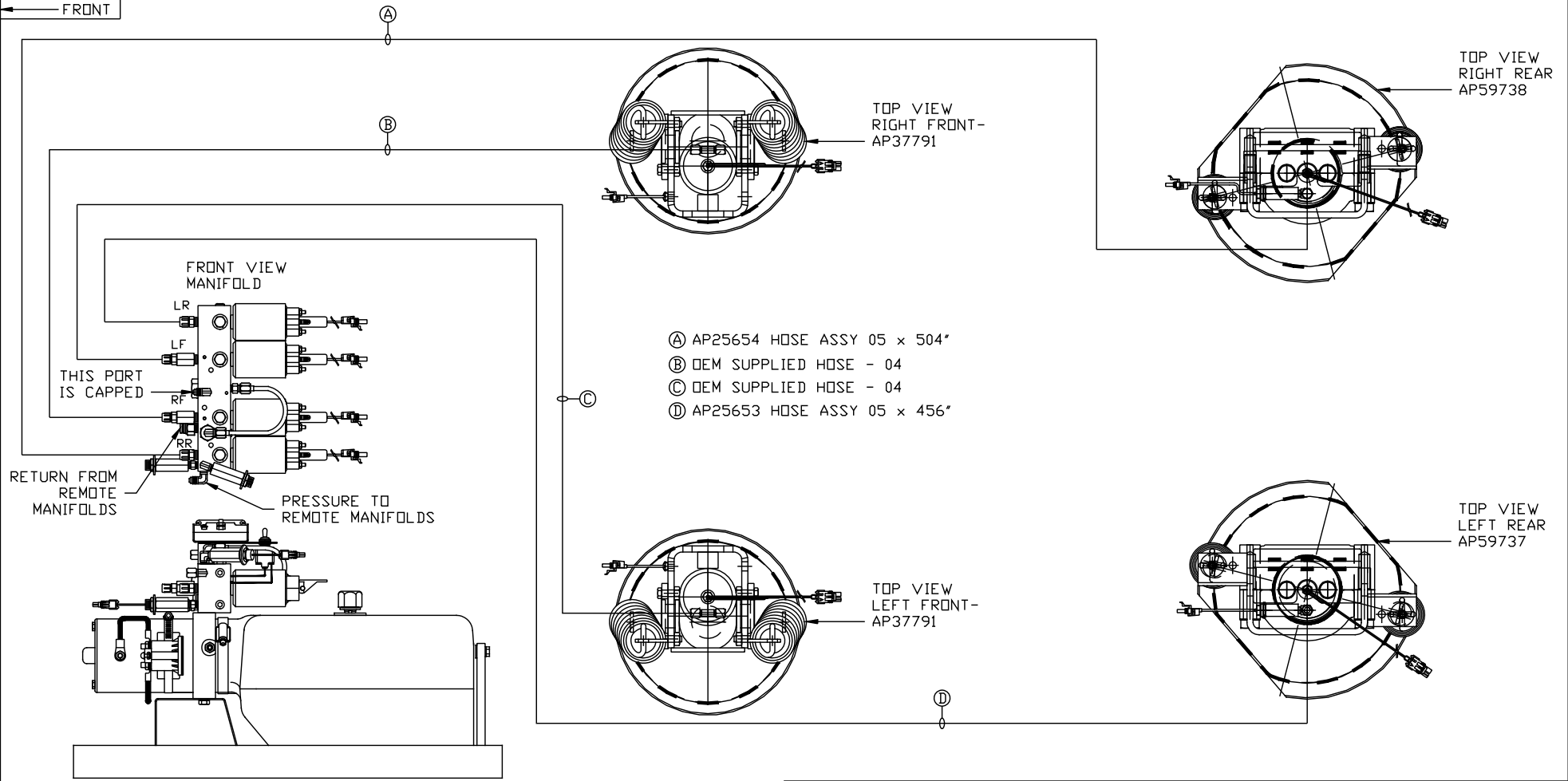


ORIENTATION  
← FRONT



- Ⓐ AP25654 HOSE ASSY 05 x 504"
- Ⓑ OEM SUPPLIED HOSE - 04
- Ⓒ OEM SUPPLIED HOSE - 04
- Ⓓ AP25653 HOSE ASSY 05 x 456"

SIDE VIEW PUMP/MANIFOLD-AP58662  
 LOCATION AND ORIENTATION OF PUMP/MANIFOLD ASSEMBLY WILL DIFFER DEPENDING UPON O.E.M.

NOTE: INSTALLATION MUST CONFORM TO GOOD SHOP PRACTICES, SAE STANDARDS, RVIA STANDARDS, AND OTHER APPLICABLE STANDARDS.

PARTS LIST: PL62642

		HWH		I-80 EXIT 267 SOUTH RT 1 MOSCOW, IOWA 52760	
		SCALE 1:6	DATE 25MAY21	DRAWN BY .	
		HYD CONN DIAGRAM			
NO.	DATE	REVISION			
		NEWMAR		DRAWING NUMBER MP71360 A/B	
THE INFORMATION DISCLOSED ON THIS DRAWING IS CONFIDENTIAL AND MUST NOT BE DISCLOSED OR USED IN ANY MANNER WHICH WILL BE DETRIMENTAL TO THE HWH CORPORATION					

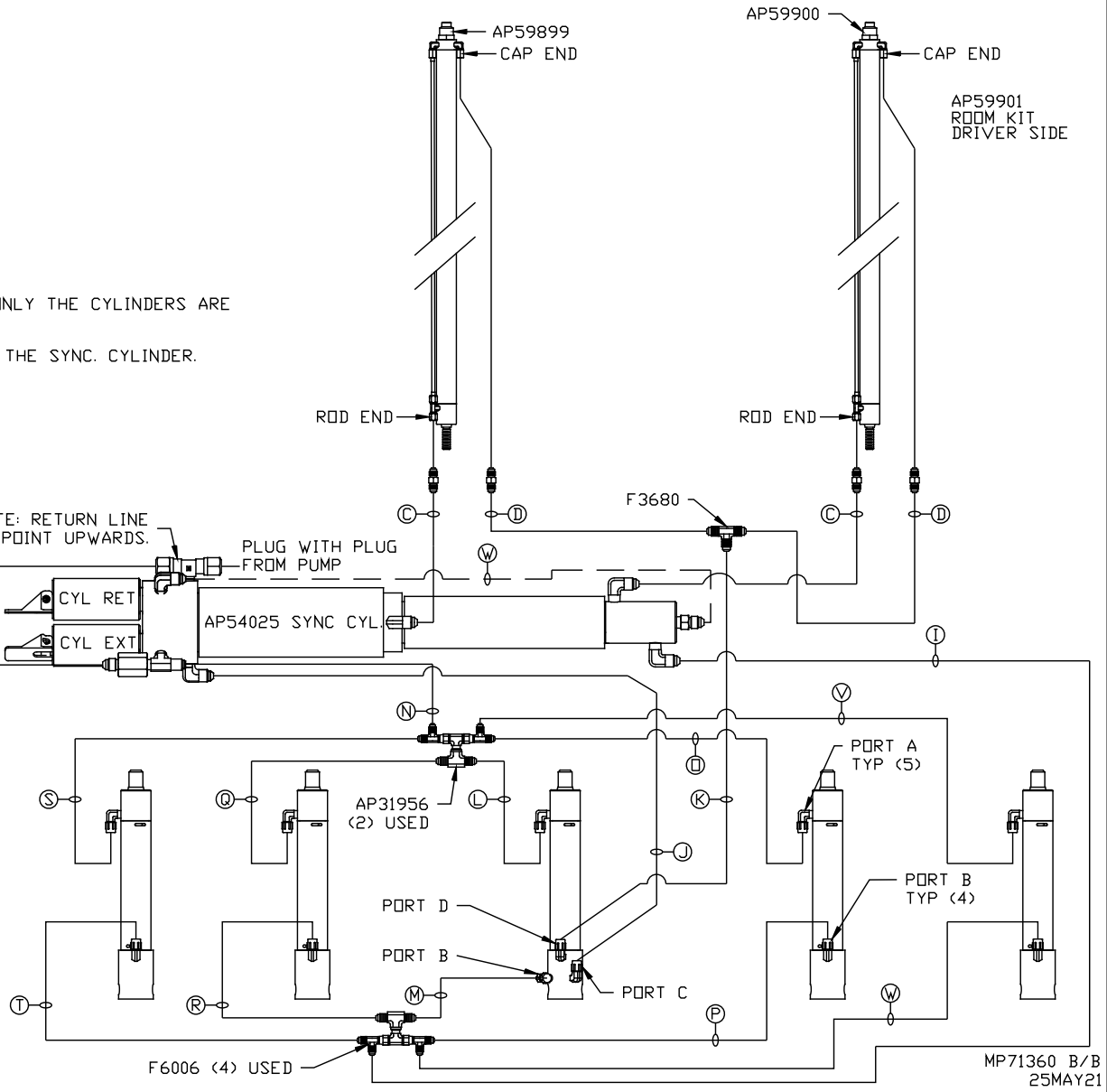
- Ⓐ HOSE ASSY 04  
PRESSURE
- Ⓑ .375" OD NYLON TUBING  
RETURN
- Ⓒ HOSE ASSY 03  
ROD END - ALWAYS PRESSURIZED  
HOSES MUST BE HIGH PRESSURE  
AND OF EQUAL LENGTH AND DIAMETER
- Ⓓ HOSE ASSY 04  
CAP END - HOSES MUST MAINTAIN  
EQUAL LENGTH AND DIAMETER
- Ⓛ AP HOSE ASSY 04  
CAP END (LIFT)
- Ⓜ HOSE ASSY 04  
CAP END (ROOM)
- Ⓚ HOSE ASSY 03  
CAP END (ROOM)
- Ⓛ HOSE ASSY 03  
ROD END (LIFT) ALWAYS PRESSURIZED
- Ⓝ HOSE ASSY 04  
CAP END (LIFT)
- Ⓝ HOSE ASSY 03  
ROD END (LIFT) ALWAYS PRESSURIZED
- Ⓛ HOSE ASSY 04  
CAP END (LIFT)
- Ⓛ HOSE ASSY 03  
ROD END (LIFT) ALWAYS PRESSURIZED
- Ⓛ HOSE ASSY 04  
CAP END (LIFT)
- Ⓛ HOSE ASSY 03  
ROD END (LIFT) ALWAYS PRESSURIZED
- Ⓛ HOSE ASSY 04  
CAP END (LIFT)
- Ⓛ HOSE ASSY 03  
ROD END (LIFT) ALWAYS PRESSURIZED
- Ⓛ HOSE ASSY 04  
CAP END (LIFT)
- Ⓛ HOSE ASSY 03  
ROD END (LIFT) ALWAYS PRESSURIZED
- Ⓛ HOSE ASSY 04  
CAP END (LIFT)

NOTES:  
FOR CONNECTION CLARITY ONLY THE CYLINDERS ARE  
SHOWN.  
HOSE Ⓜ IS INCLUDED WITH THE SYNC. CYLINDER.

NOTE: RETURN LINE  
MUST POINT UPWARDS.

PLUG WITH PLUG  
FROM PUMP

\*NOTE: ISOLATED PRESSURE IF  
AVAILABLE, SEE LEVELING  
SYSTEM DIAGRAM



NOTE: INSTALLATION MUST CONFORM TO GOOD SHOP PRACTICES, SAE  
STANDARDS, RVIA STANDARDS, AND OTHER APPLICABLE STANDARDS.

F6006 (4) USED

MP71360 B/B  
25MAY21