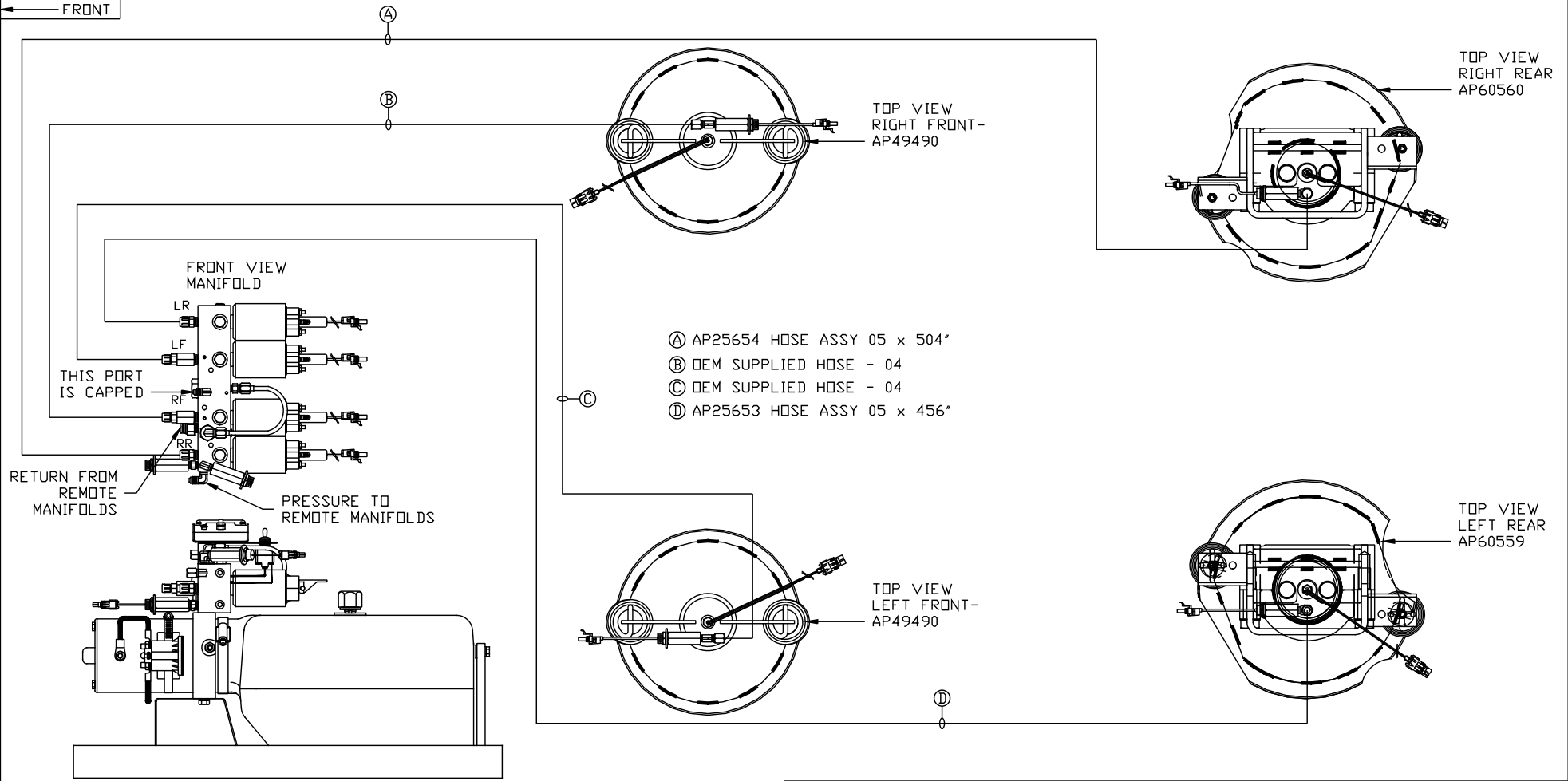


ORIENTATION  
← FRONT



SIDE VIEW PUMP/MANIFOLD-AP58662

LOCATION AND ORIENTATION OF PUMP/MANIFOLD ASSEMBLY WILL DIFFER DEPENDING UPON O.E.M.

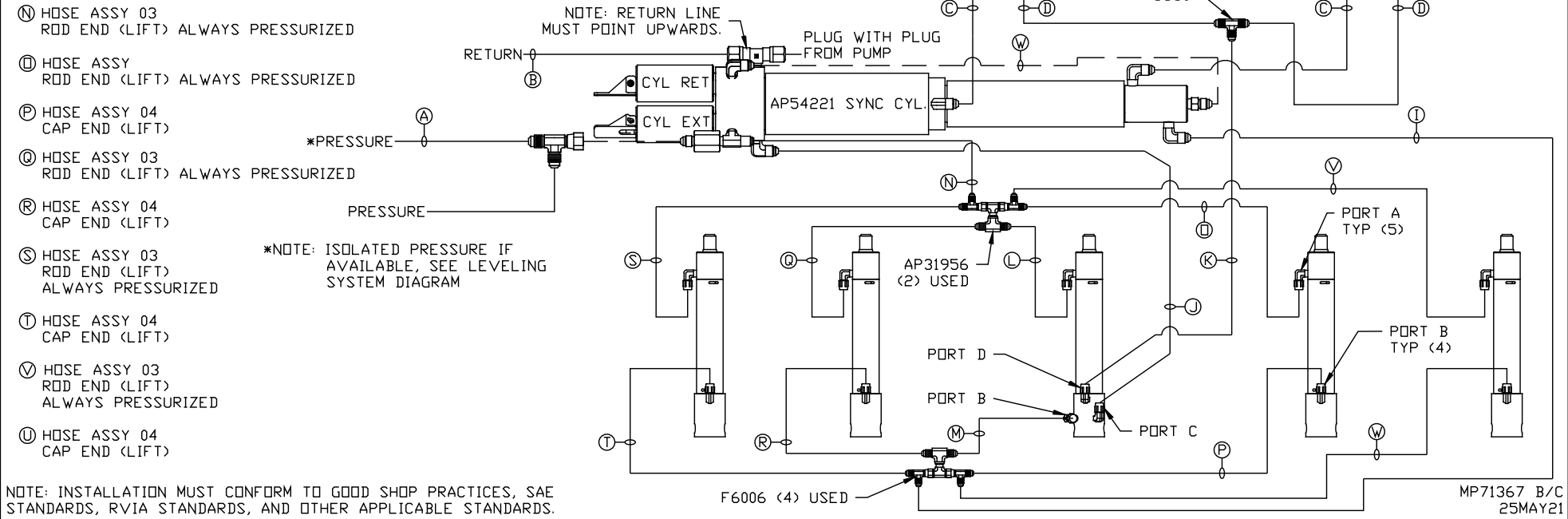
NOTE: INSTALLATION MUST CONFORM TO GOOD SHOP PRACTICES, SAE STANDARDS, RVIA STANDARDS, AND OTHER APPLICABLE STANDARDS.

PARTS LIST: PL62649

|  |      |                  |              |  |  |
|--|------|------------------|--------------|--|--|
|  |      | HWH              |              | I-80 EXIT 267 SOUTH<br>RT 1 MOSCOW, IOWA 52760 |  |
|  |      | SCALE 1:6        | DATE 25MAY21 | DRAWN BY .                                     |  |
|  |      | HYD CONN DIAGRAM |              |  |  |
| NO.  | DATE | REVISION         |              |  |  |
|  |      | NEWMAR           |              | DRAWING NUMBER<br>MP71367 A/C                  |  |
| THE INFORMATION DISCLOSED ON THIS DRAWING IS CONFIDENTIAL AND MUST NOT BE DISCLOSED OR USED IN ANY MANNER WHICH WILL BE DETRIMENTAL TO THE HWH CORPORATION |      |                  |              |  |  |

- Ⓐ HOSE ASSY 04  
PRESSURE
- Ⓑ .375" OD NYLON TUBING  
RETURN
- Ⓒ HOSE ASSY 03  
ROD END - ALWAYS PRESSURIZED  
HOSES MUST BE HIGH PRESSURE  
AND OF EQUAL LENGTH AND DIAMETER
- Ⓓ HOSE ASSY 04  
CAP END - HOSES MUST MAINTAIN  
EQUAL LENGTH AND DIAMETER
- Ⓚ AP HOSE ASSY 04  
CAP END (LIFT)
- Ⓛ HOSE ASSY 04  
CAP END (ROOM)
- Ⓜ HOSE ASSY 03  
CAP END (ROOM)
- Ⓝ HOSE ASSY 03  
ROD END (LIFT) ALWAYS PRESSURIZED
- Ⓞ HOSE ASSY 04  
CAP END (LIFT)
- Ⓟ HOSE ASSY 03  
ROD END (LIFT) ALWAYS PRESSURIZED
- Ⓠ HOSE ASSY 04  
CAP END (LIFT)
- Ⓡ HOSE ASSY 03  
ROD END (LIFT) ALWAYS PRESSURIZED
- Ⓢ HOSE ASSY 04  
CAP END (LIFT)
- Ⓣ HOSE ASSY 03  
ROD END (LIFT) ALWAYS PRESSURIZED
- Ⓤ HOSE ASSY 04  
CAP END (LIFT)

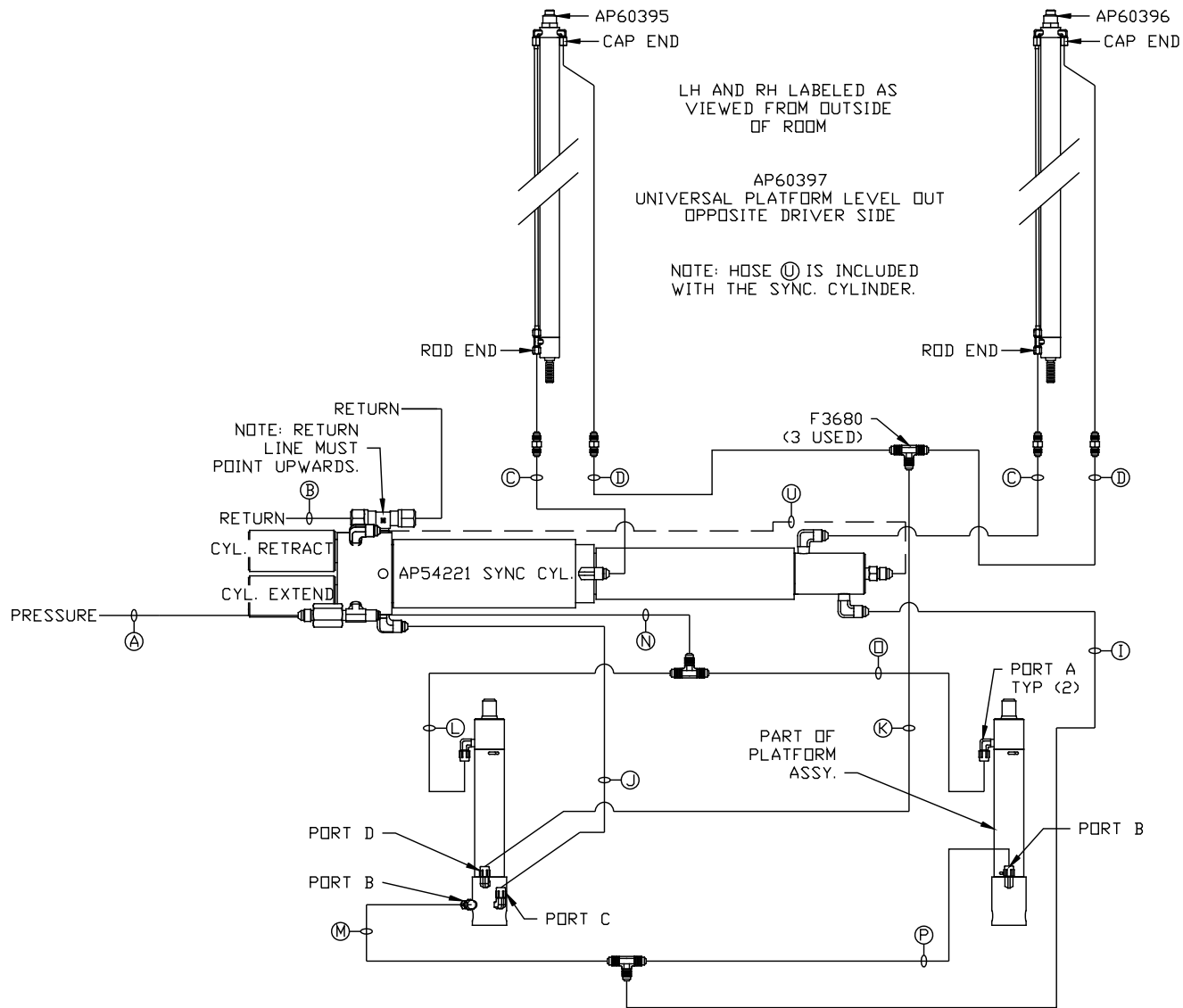
NOTES:  
 FOR CONNECTION CLARITY ONLY THE CYLINDERS ARE  
 SHOWN.  
 HOSE Ⓜ IS INCLUDED WITH THE SYNC. CYLINDER.



NOTE: INSTALLATION MUST CONFORM TO GOOD SHOP PRACTICES, SAE STANDARDS, RVIA STANDARDS, AND OTHER APPLICABLE STANDARDS.

AP60397  
ROOM KIT  
DRIVER SIDE

MP71367 B/C  
25MAY21



- Ⓐ HOSE ASSY 04  
PRESSURE
- Ⓑ .375" OD NYLON TUBING  
RETURN
- Ⓒ HOSE ASSY 03  
ROD END - ALWAYS PRESSURIZED - MUST  
BE HIGH PRESSURE HOSES OF EQUAL  
LENGTH AND DIAMETER
- Ⓓ HOSE ASSY 04  
CAP END - MUST MAINTAIN EQUAL LENGTH  
AND DIAMETER
- Ⓚ HOSE ASSY 04  
CAP END (LIFT)
- Ⓛ HOSE ASSY 03  
CAP END (ROOM)
- Ⓜ HOSE ASSY 03  
CAP END (ROOM)
- Ⓝ HOSE ASSY 03  
CAP END (ROOM)
- Ⓟ HOSE ASSY 03  
CAP END (ROOM)
- Ⓠ HOSE ASSY 03  
ROD END (LIFT) - ALWAYS PRESSURIZED
- Ⓡ HOSE ASSY 03  
CAP END (LIFT)
- Ⓢ HOSE ASSY 04  
ROD END - ALWAYS PRESSURIZED (LIFT)
- Ⓣ HOSE ASSY 03  
ROD END (LIFT) - ALWAYS PRESSURIZED
- Ⓤ HOSE ASSY 03  
CAP END LIFT
- Ⓡ HOSE ASSY 03  
CAP END LIFT
- Ⓢ STEEL TUBE  
CAP END (LIFT)

NOTE: INSTALLATION MUST CONFORM TO GOOD SHOP PRACTICES, SAE STANDARDS, RVIA STANDARDS, AND OTHER APPLICABLE STANDARDS.

MP71367 C/C  
25MAY21