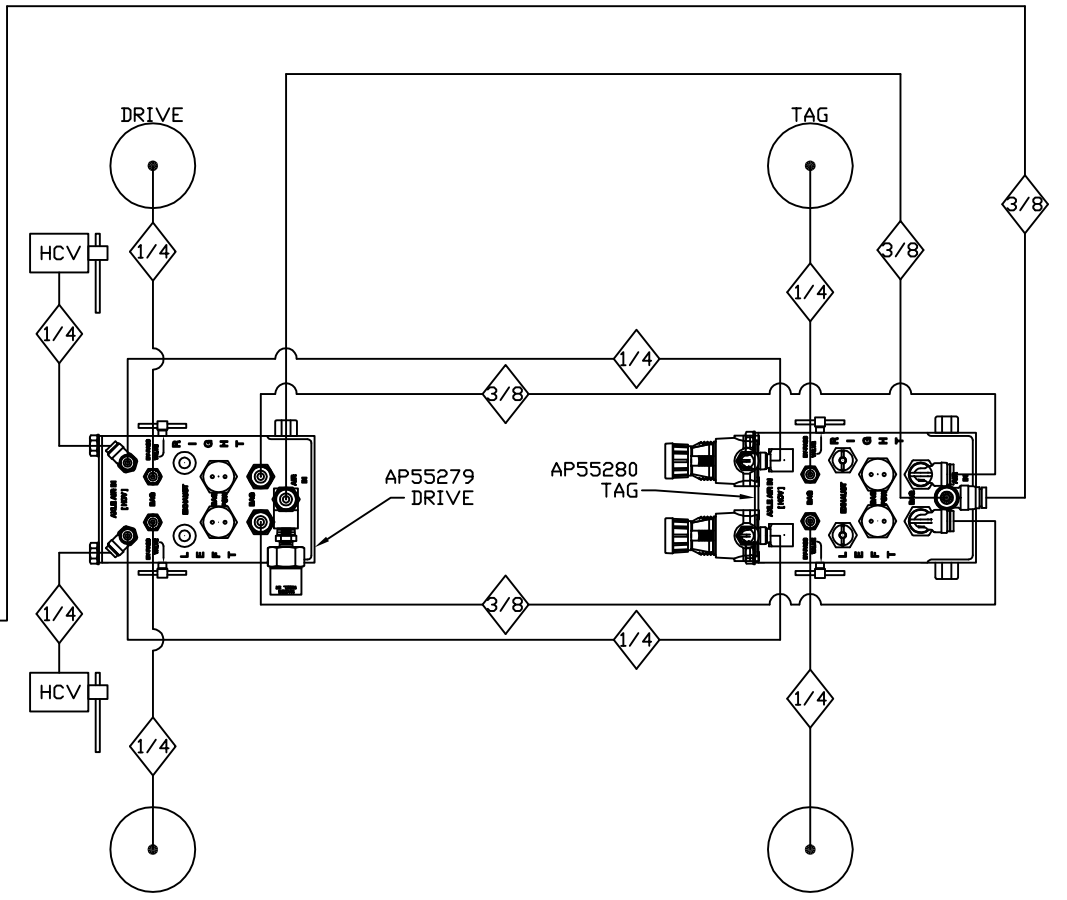
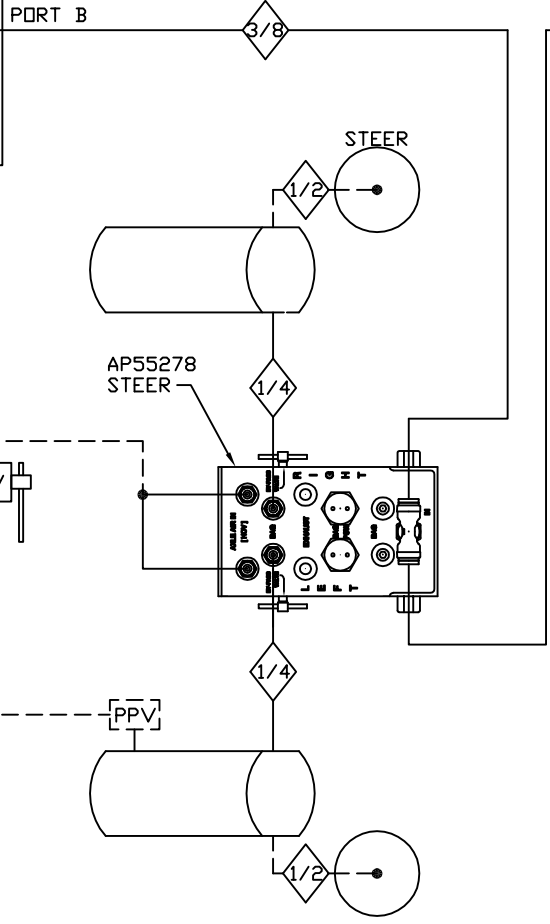


AIR MANIFOLDS ARE CHECKED FROM FEEDING COACH AIR TANKS



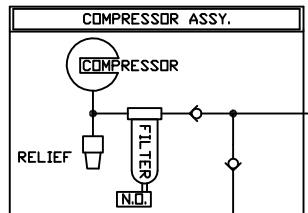
--- DEM
 — AIR LEVELING

ALL AIRLINE AND FITTINGS TO BE D.O.T. APPROVED

NOTE: INSTALLATION MUST CONFORM TO GOOD SHOP PRACTICES, SAE STANDARDS, RVIA STANDARDS, AND OTHER APPLICABLE STANDARDS.

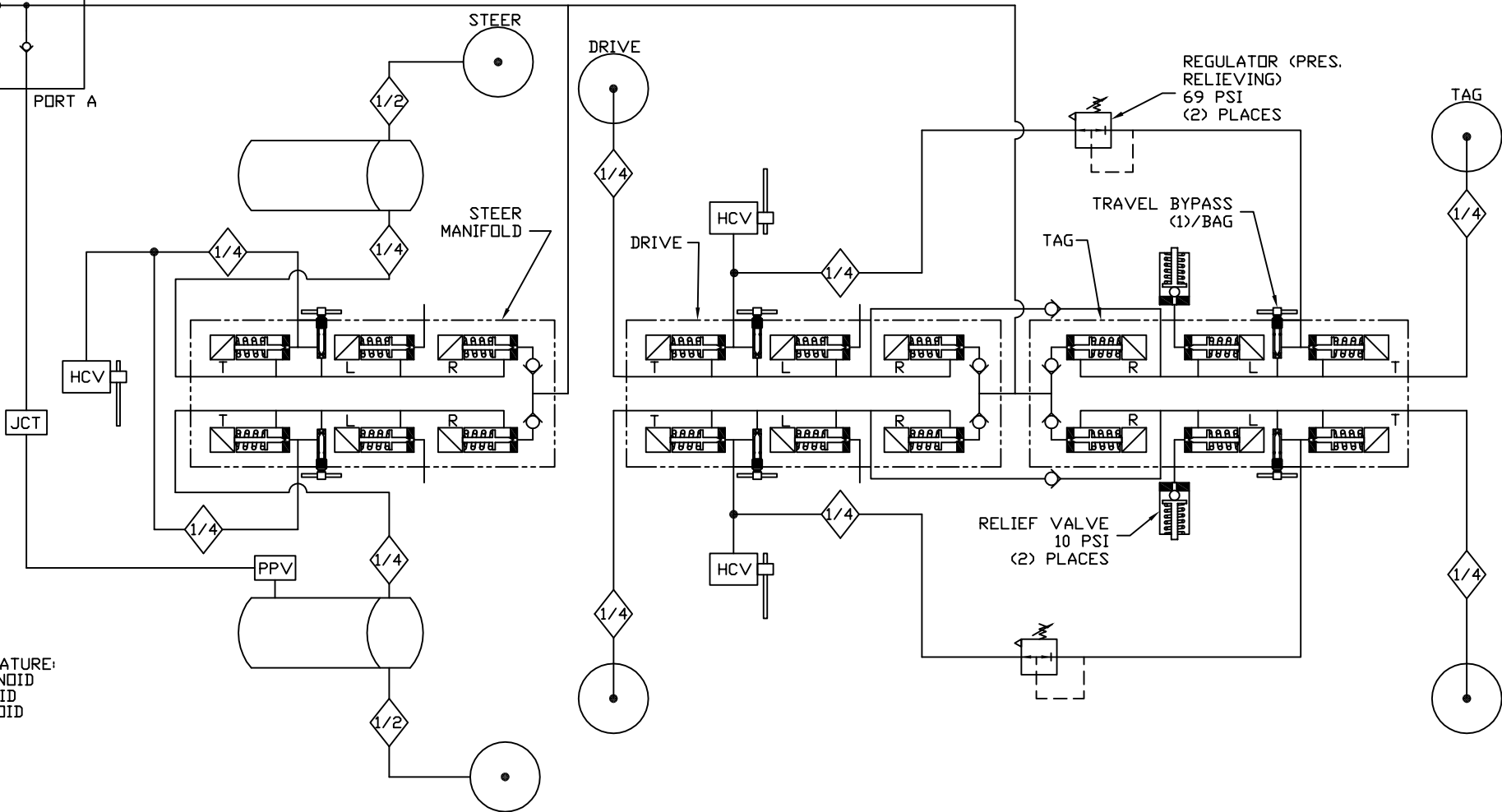
FREIGHTLINER TAG/WINNEBAGO

| | | | | | |
|--|---------|-------------------------|--|--------------|------------|
| | | | HWH I-80 EXIT 267 SOUTH RT 1 MOSCOW, IOWA 52760 | | |
| | | | SCALE 1:6 | DATE 06AUG15 | DRAWN BY . |
| 1 | 13OCT16 | ADDED COMP. PORT LABELS | AIR CONN DIAGRAM | | |
| NO. | DATE | REVISION | | | |
| THE INFORMATION DISCLOSED ON THIS DRAWING IS CONFIDENTIAL AND MUST NOT BE DISCLOSED OR USED IN ANY MANNER WHICH WILL BE DETRIMENTAL TO THE HWH CORPORATION | | | DRAWING NUMBER MP79147 A/B | | |



AIR MANIFOLDS ARE CHECKED FROM FEEDING COACH AIR TANKS

NOTE: BEFORE CONTROL IS GIVEN BACK TO HEIGHT CONTROL VALVES (RETURNING COACH TO RIDE HEIGHT), THE TAG WILL LOWER FOR 5 SECONDS.



MANIFOLD NOMENCLATURE:
 T = TRAVEL SOLENOID
 R = RAISE SOLENOID
 L = LOWER SOLENOID

NOTE: SCHEMATIC DIAGRAM

ALL AIRLINE AND FITTINGS TO BE D.O.T. APPROVED

NOTE: INSTALLATION MUST CONFORM TO GOOD SHOP PRACTICES, SAE STANDARDS, RVIA STANDARDS, AND OTHER APPLICABLE STANDARDS.