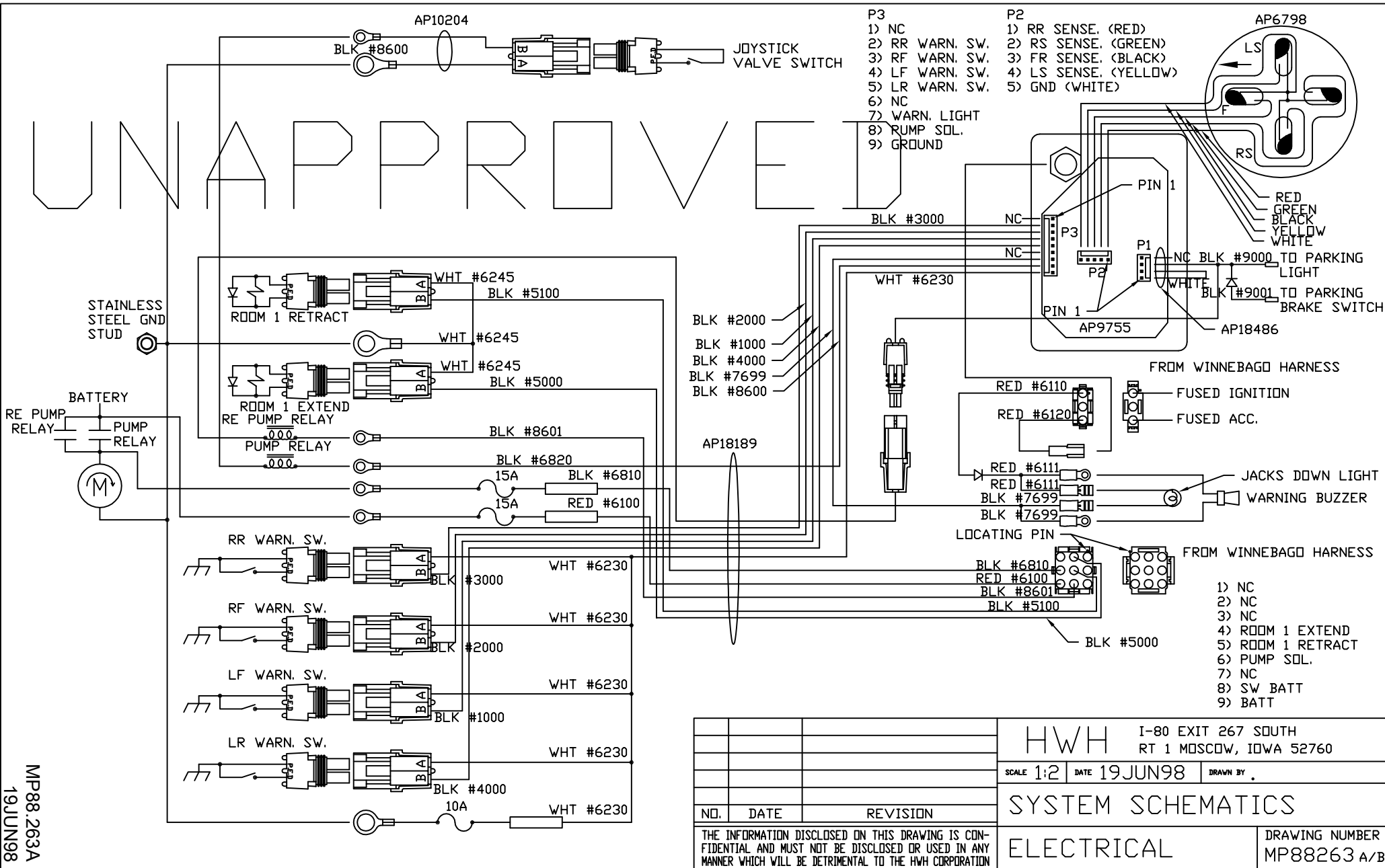


# UNAPPROVE



- P3
- 1) NC
  - 2) RR WARN. SW.
  - 3) RF WARN. SW.
  - 4) LF WARN. SW.
  - 5) LR WARN. SW.
  - 6) NC
  - 7) WARN. LIGHT
  - 8) RUMP SOL.
  - 9) GROUND

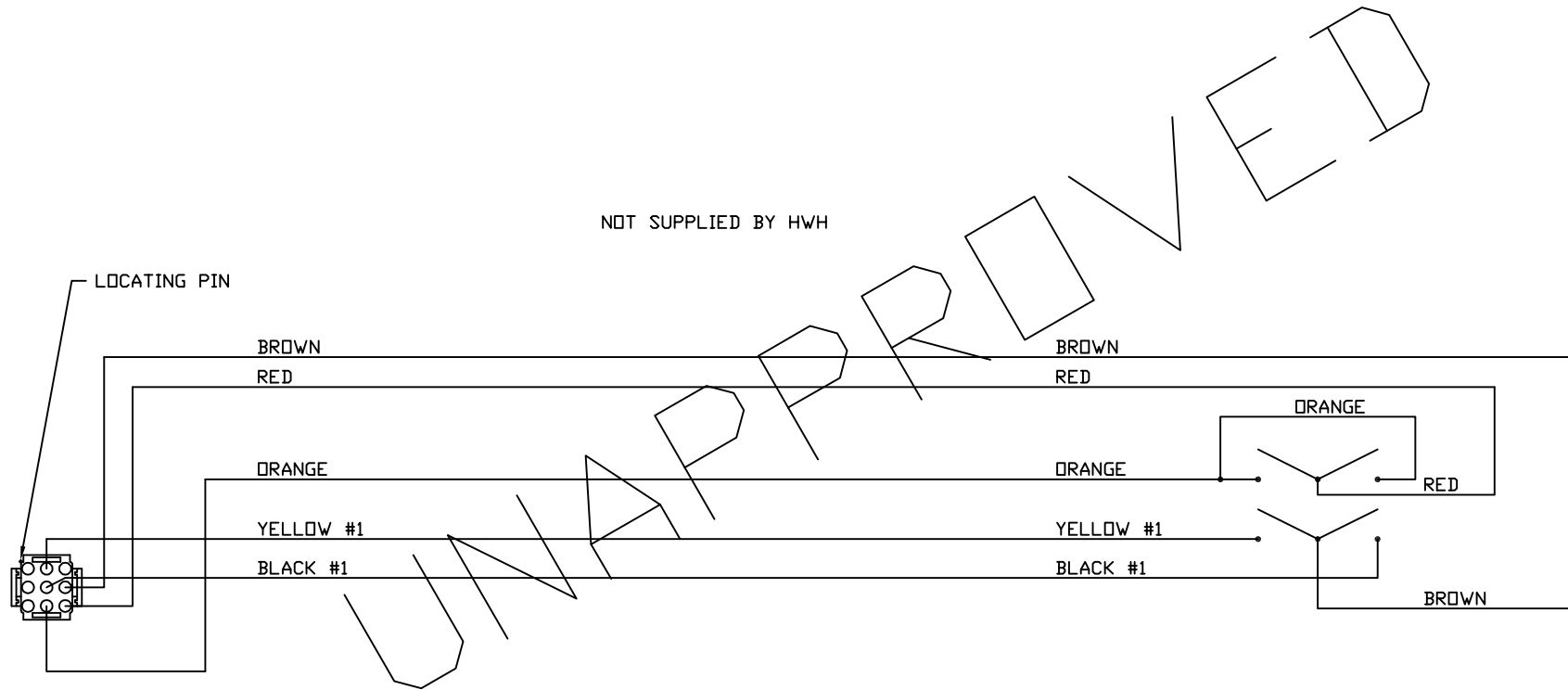
- P2
- 1) RR SENSE. (RED)
  - 2) RS SENSE. (GREEN)
  - 3) FR SENSE. (BLACK)
  - 4) LS SENSE. (YELLOW)
  - 5) GND (WHITE)

- 1) NC
- 2) NC
- 3) NC
- 4) ROOM 1 EXTEND
- 5) ROOM 1 RETRACT
- 6) PUMP SOL.
- 7) NC
- 8) SW BATT
- 9) BATT

MP88.263A  
19JUN98

		<b>HWH</b>		I-80 EXIT 267 SOUTH RT 1 MOSCOW, IOWA 52760	
		SCALE 1:2	DATE 19JUN98	DRAWN BY .	
		<b>SYSTEM SCHEMATICS</b>			
NO.	DATE	REVISION		<b>ELECTRICAL</b>	
THE INFORMATION DISCLOSED ON THIS DRAWING IS CONFIDENTIAL AND MUST NOT BE DISCLOSED OR USED IN ANY MANNER WHICH WILL BE DETRIMENTAL TO THE HWH CORPORATION				DRAWING NUMBER <b>MP88263 A/B</b>	

NOT SUPPLIED BY HWH



MP88.263  
19JUN98

MP88263 B/B  
19JUN98