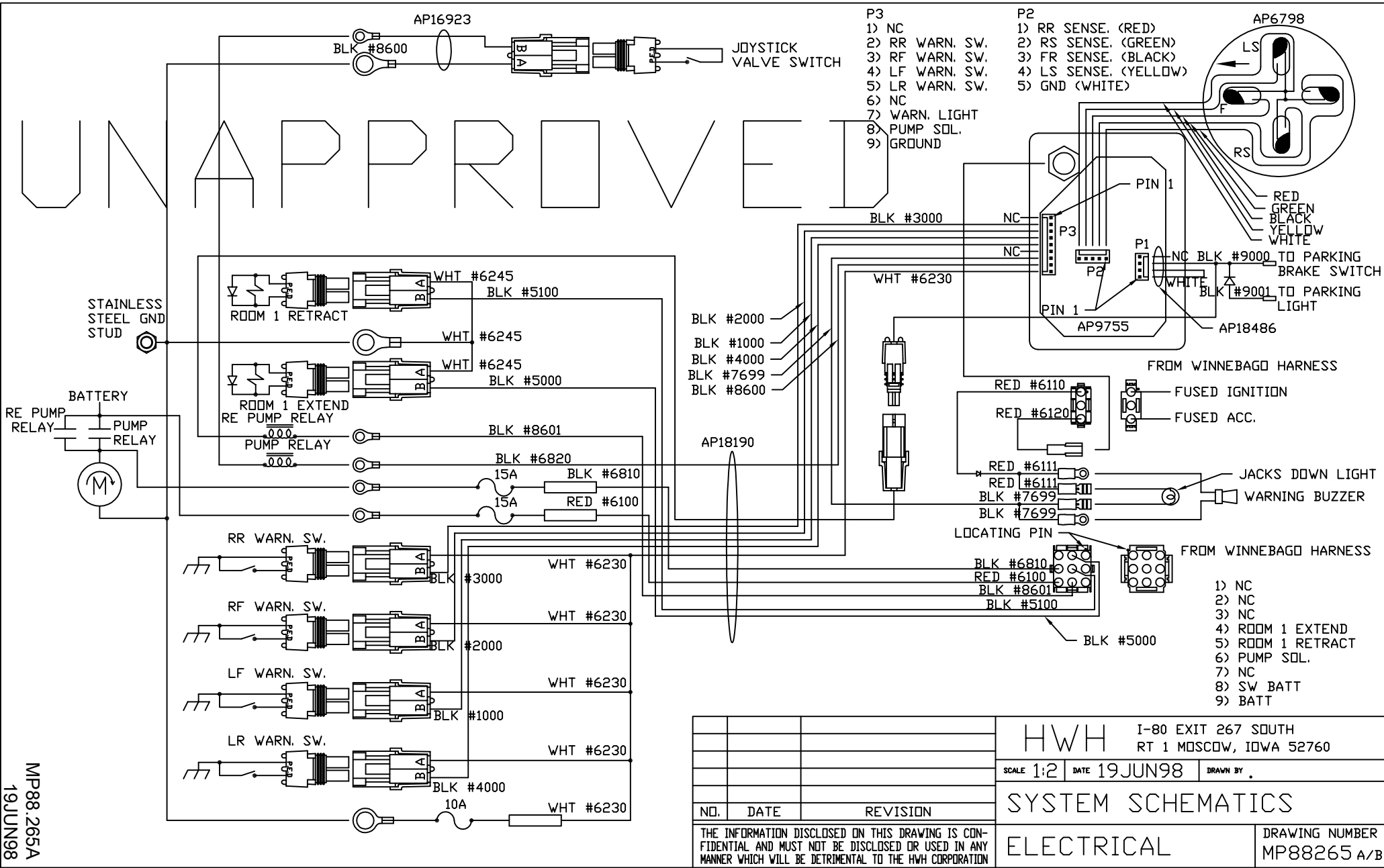


UNAPPROVED



- P3
- 1) NC
 - 2) RR WARN. SW.
 - 3) RF WARN. SW.
 - 4) LF WARN. SW.
 - 5) LR WARN. SW.
 - 6) NC
 - 7) WARN. LIGHT
 - 8) PUMP SOL.
 - 9) GROUND

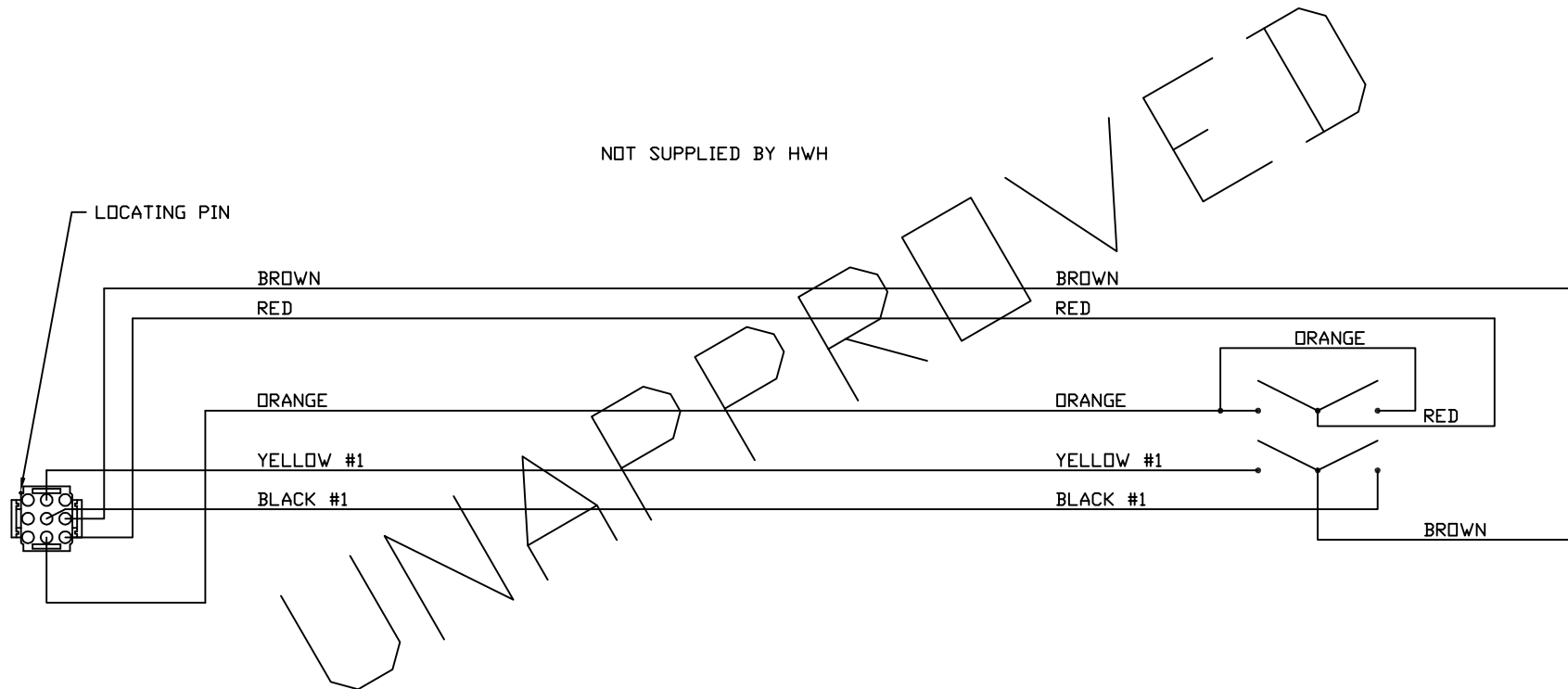
- P2
- 1) RR SENSE. (RED)
 - 2) RS SENSE. (GREEN)
 - 3) FR SENSE. (BLACK)
 - 4) LS SENSE. (YELLOW)
 - 5) GND (WHITE)

- 1) NC
- 2) NC
- 3) NC
- 4) ROOM 1 EXTEND
- 5) ROOM 1 RETRACT
- 6) PUMP SOL.
- 7) NC
- 8) SW BATT
- 9) BATT

MP88.265A
19JUN98

		HWH		I-80 EXIT 267 SOUTH RT 1 MOSCOW, IOWA 52760	
		SCALE 1:2	DATE 19JUN98	DRAWN BY .	
		SYSTEM SCHEMATICS			
NO.	DATE	REVISION			
THE INFORMATION DISCLOSED ON THIS DRAWING IS CONFIDENTIAL AND MUST NOT BE DISCLOSED OR USED IN ANY MANNER WHICH WILL BE DETRIMENTAL TO THE HWH CORPORATION					
ELECTRICAL				DRAWING NUMBER MP88265 A/B	

NOT SUPPLIED BY HWH



MP88.265
19JUN98

MP88265 B/B
19JUN98