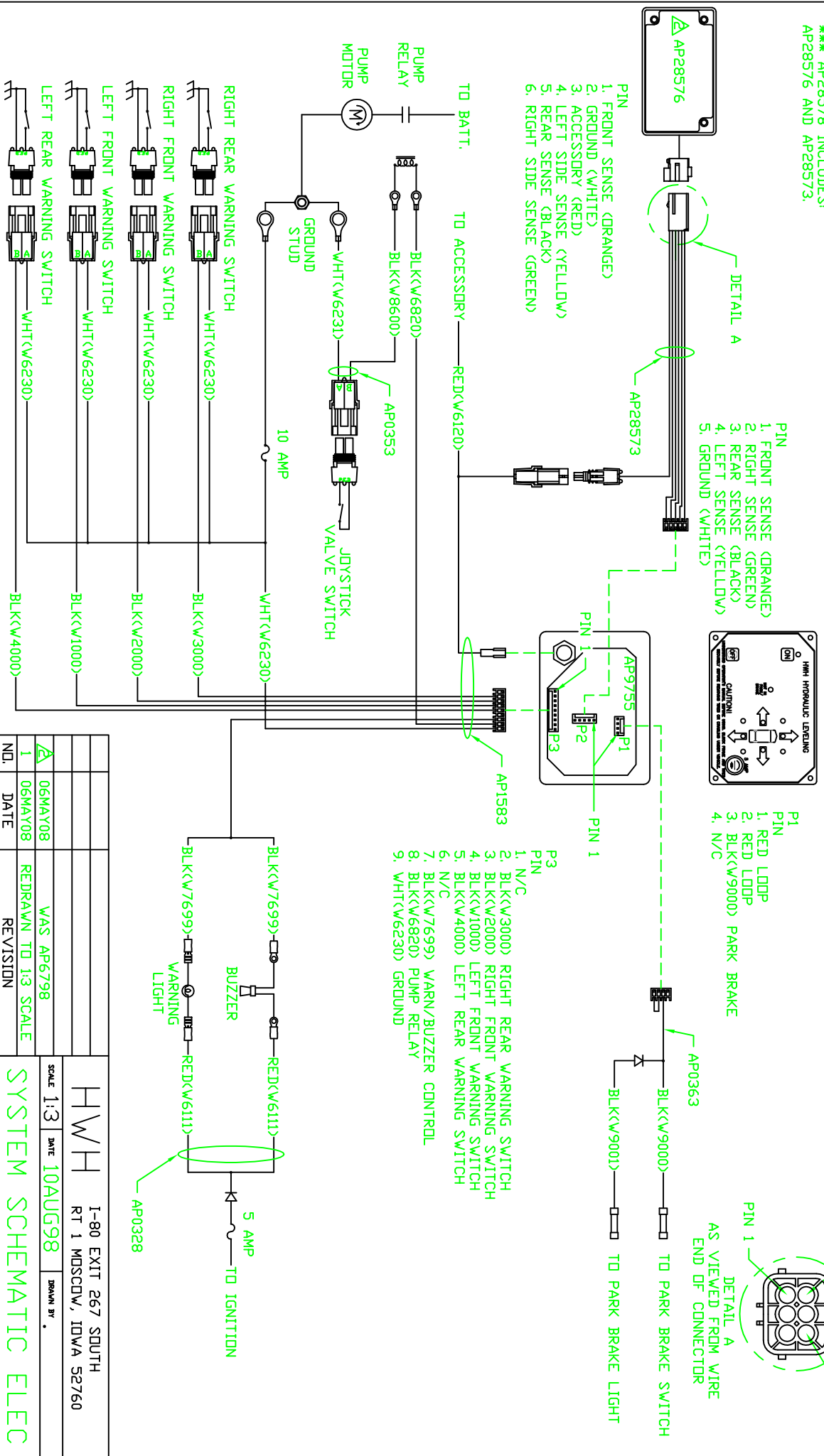


*** AP28578 INCLUDES:
AP28576 AND AP28573.



NOTE: INSTALLATION MUST CONFORM TO GOOD SHOP PRACTICES, SAE STANDARDS, RVIA STANDARDS, AND OTHER APPLICABLE STANDARDS.

<p>1</p> <p>06MAY08</p> <p>DATE</p>	<p>1</p> <p>REVISION</p>	<p>06MAY08</p> <p>DATE</p>	<p>VAS AP6798</p> <p>REVISION</p>	<p>10AUG98</p> <p>DATE</p>
<p>SCALE 1:3 DRAWN BY .</p>				
<p>HWH</p>		<p>1-80 EXIT 267 SOUTH RT 1 MOSCOW, IOWA 52760</p>		
<p>SYSTEM SCHEMATIC ELEC</p>				
<p>THE INFORMATION DISCLOSED ON THIS DRAWING IS CONFIDENTIAL AND MUST NOT BE DISCLOSED OR USED IN ANY MANNER WHICH WILL BE DETRIMENTAL TO THE HWH CORPORATION</p>			<p>DRAWING NUMBER</p> <p>MP882870</p>	