

- P6
 1) JACK INTERRUPT
 2) NC
 3) ACC.
- P7
 1) NC
 2) NC
 3) PRESS. SW.
 4) LR SOLENOID
 5) RR SOLENOID
 6) LF SOLENOID
 7) TRAVEL
 8) RF SOLENOID
 9) DUMP VALVE
- P8
 1) SW. BATT.
 2) SW. BATT.
 3) SW. BATT.
 4) NC
 5) PARK BRAKE
 6) PUMP RELAY

WINNAP

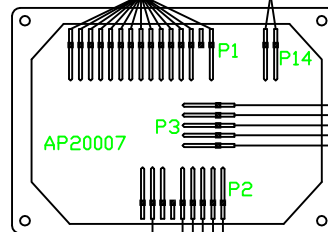
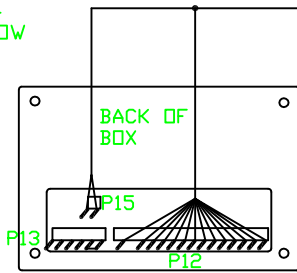
MP88.54
17AUG99

		HWH		I-80 EXIT 267 SOUTH RT 1 MOSCOW, IOWA 52760	
		SCALE 1:2	DATE 17AUG99	DRAWN BY .	
		SCHEMATIC SYSTEM			
NO.	DATE	REVISION			
THE INFORMATION DISCLOSED ON THIS DRAWING IS CONFIDENTIAL AND MUST NOT BE DISCLOSED OR USED IN ANY MANNER WHICH WILL BE DETRIMENTAL TO THE HWH CORPORATION					
ELECTRICAL				DRAWING NUMBER MP88546 A/D	

- P12, P1
 1) BLUE
 2) BROWN
 3) GRAY
 4) PURPLE
 5) BLACK/WHITE
 6) BLACK
 7) WHITE/BLACK
 8) WHITE
 9) ORANGE/BLACK
 10) ORANGE
 11) GREEN
 12) GREEN/BLACK
 13) RED/BLACK
 14) NC
 15) RED

- P15, P14
 1) YELLOW
 2) NC

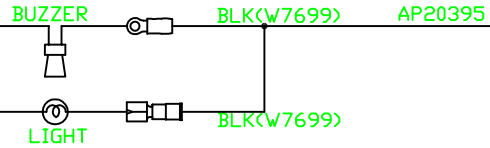
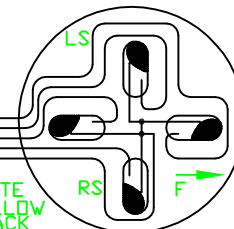
AP19550



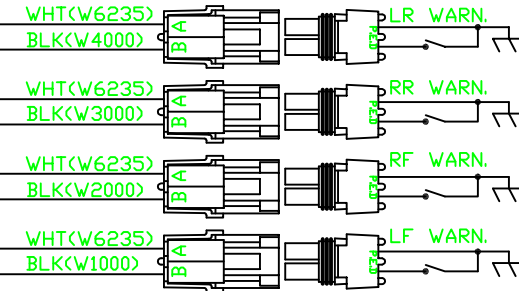
- P3
 1) FR SENSE
 2) LS SENSE
 3) REAR SENSE
 4) RS SENSE
 5) GND

- P2
 1) BLK(W4000)
 2) BLK(W3000)
 3) BLK(W2000)
 4) BLK(W1000)
 5) WHT(W6235)
 6) KEY
 7) NC
 8) BLK(W7699)
 9) NC

AP6800



AP19551



BATT.

SW. BATT.

GND

ROOM INTERRUPT

ROOM INTERRUPT

RE PUMP RELAY

GROUND

BATTERY

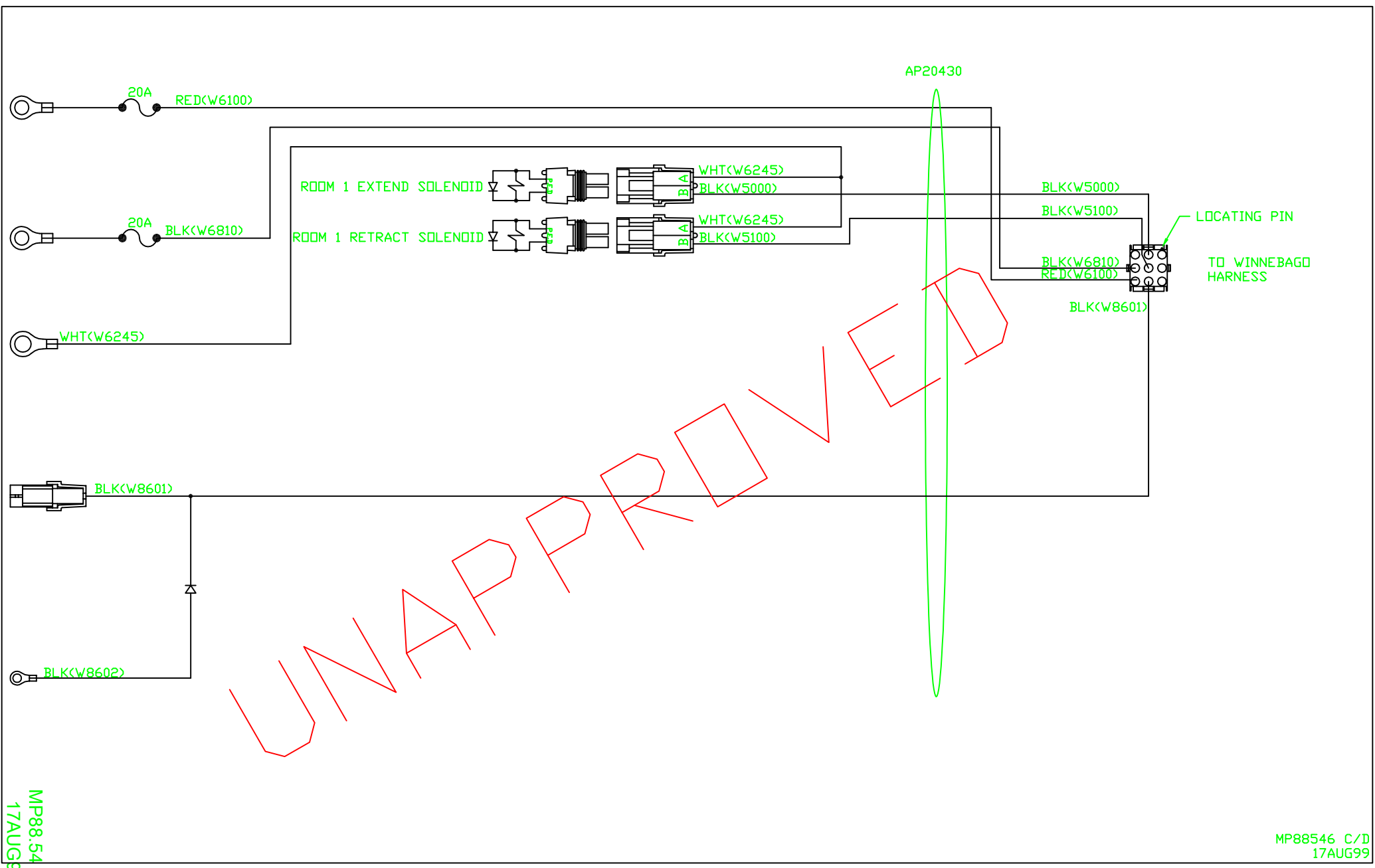
SW BATTERY

RE PMP RLY

UNAPPROVED

MP8854
 17AUG99

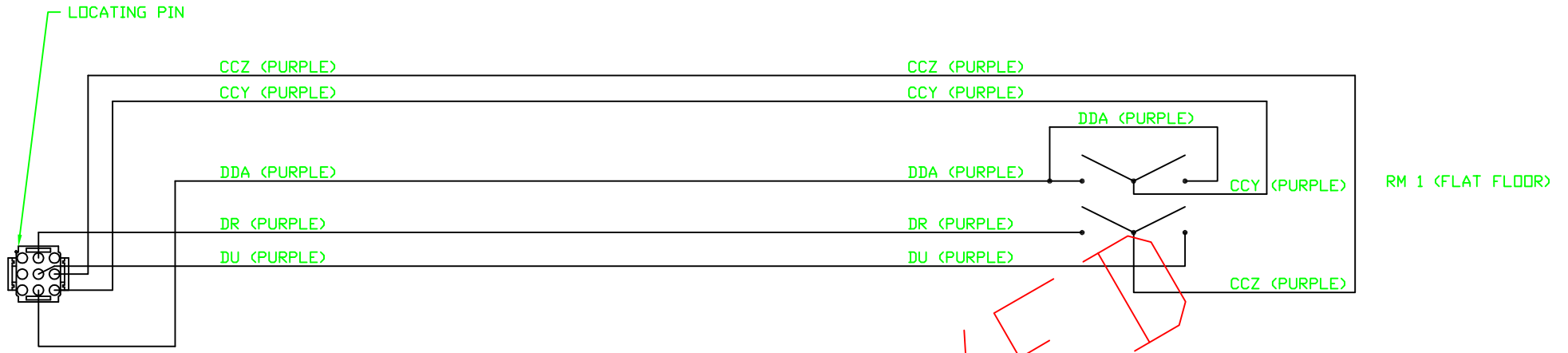
MP88546 B/D
 17AUG99



MP88.54
17AUG99

MP88546 C/D
17AUG99

NOT SUPPLIED BY HWH



- PIN 1) NC
- PIN 2) NC
- PIN 3) NC
- PIN 4) DR - ROOM 1 EXTEND
- PIN 5) DU - ROOM 1 RETRACT
- PIN 6) DDA - ROOM 1 PUMP RELAY
- PIN 7) NC
- PIN 8) CCZ - SWITCHED BATTERY POWER
- PIN 9) CCY - BATTERY POWER

UNAPPROVED