

AP25875 (BROWN)

- PIN  
 1 N/C  
 2 BLK(W1500) LEFT FRONT RAISE  
 3 BLK(W1600) LEFT FRONT LOWER  
 4 BLK(W2500) RIGHT FRONT RAISE  
 5 BLK(W2600) RIGHT FRONT LOWER  
 6 BLK(W9700) COMPRESSOR  
 7 N/C  
 8 BLK(W1700) FRONT TRAVEL  
 9 N/C  
 10 N/C  
 11 WHT (W6254) GROUND  
 12 N/C

AP25875 (GRAY)

- PIN  
 1 BLK(W6801) SW BATT  
 2 BLK(W6801) SW BATT  
 3 WHT(W6231) GROUND  
 4 WHT(W6231) GROUND

AP25875 (BLACK)

- PIN  
 1 N/C  
 2 BLK(W4500) LEFT REAR RAISE  
 3 BLK(W4600) LEFT REAR LOWER  
 4 BLK(W3500) RIGHT REAR RAISE  
 5 BLK(W3600) RIGHT REAR LOWER  
 6 N/C  
 7 N/C  
 8 BLK(W3700) REAR TRAVEL  
 9 N/C  
 10 N/C  
 11 WHT (W6258) GROUND  
 12 N/C

AP34191 CN9(BLACK)

- PIN  
 1 BLK(W7696) SYSTEM WAKE UP  
 2 N/C  
 3 RED(W6800) SW BATTERY  
 4 WHT(W6230) GROUND  
 5 CAN SHIELD  
 6 RED(W6110) IGNITION  
 7 GRN CAN LOW  
 8 YEL CAN HI

AP34191 CN10(GRAY)

- PIN  
 1 N/C  
 2 N/C  
 3 N/C  
 4 BLK(W5000) EXTEND  
 5 BLK(W5100) RETRACT  
 6 RED(W6805) BATTERY  
 7 BLK(W7696) SYSTEM WAKE-UP  
 8 WHT(W6230) GROUND

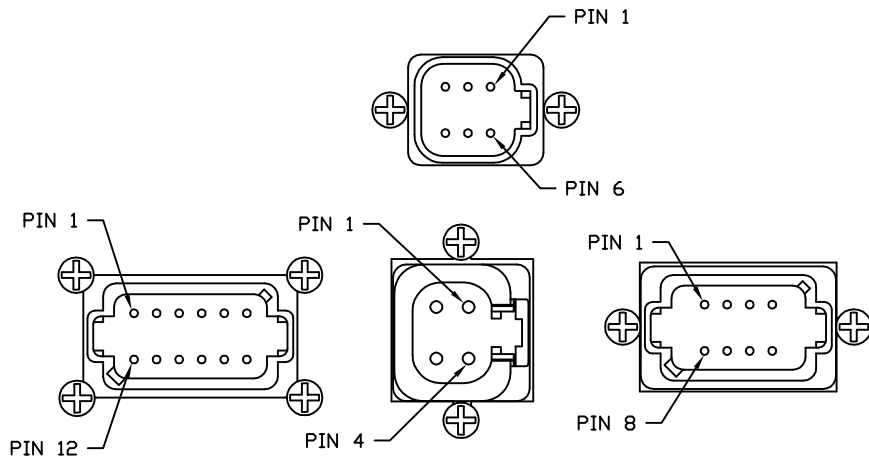
AP34191 CN12(GRAY)

- PIN  
 1 BLK(W3215) AIR SYSYTEM PRESSURE SWITCH  
 2 BLK(W1210) LEFT FRONT AIR PRESS. SWITCH  
 3 BLK(W2210) RIGHT FRONT AIR PRESS. SWITCH  
 4 BLK(W3210) RIGHT REAR AIR PRESS. SWITCH  
 5 BLK(W4210) LEFT REAR AIR PRESS. SWITCH  
 6 WHT(W6230) GROUND  
 7 N/C  
 8 BLK(W1000) LEFT FRONT JACK WARN. SWITCH  
 9 BLK(W1200) LEFT FRONT JACK PRESS. SWITCH  
 10 BLK(W2000) RIGHT FRONT JACK WARN. SWITCH  
 11 BLK(W2200) RIGHT FRONT JACK PRESS. SWITCH  
 12 N/C

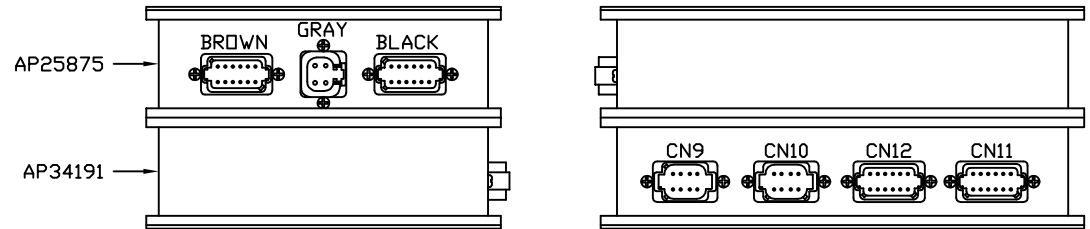
AP34191 CN11(GREEN)

- PIN  
 1 N/C  
 2 N/C  
 3 N/C  
 4 N/C  
 5 N/C  
 6 N/C  
 7 N/C  
 8 N/C  
 9 N/C  
 10 N/C  
 11 N/C  
 12 N/C

NOTE: WIRE NUMBERS ON THIS SHEET ARE REFERENCED TO HARNESS PLUGS.



NOTE: PIN NUMBERS ARE TYPICAL TO ALL 4, 6, 8, AND 12 PIN PLUGS.



AP33297  
 I/O F/R AIR & F HYD  
 MODULE

5	05DEC05	UPDATED LED LAYOUT
4	18NOV05	ADDED W7696
3	11OCT05	WAS AP33913, AP34464
2	07OCT05	ADDED 'D' SHEET
1	15JUN05	WAS IFC SYSTEM
NO.	DATE	REVISION

HWH		I-80 EXIT 267 SOUTH RT 1 MOSCOW, IOWA 52760	
		SCALE 1:3	DATE 02SEP04
SYSTEM SCHEMATIC ELEC		DRAWN BY .	

THE INFORMATION DISCLOSED ON THIS DRAWING IS CONFIDENTIAL AND MUST NOT BE DISCLOSED OR USED IN ANY MANNER WHICH WILL BE DETRIMENTAL TO THE HWH CORPORATION

DRAWING NUMBER  
 MP89300 A/D

AP35151 (BROWN)  
PIN

- 1 BLK(W7600) CRX1
- 2 BLK(W1400) LEFT FRONT JACK
- 3 BLK(W2400) RIGHT FRONT JACK
- 4 BLK(W5000) CYLINDER EXTEND
- 5 BLK(W3400) RIGHT REAR JACK
- 6 BLK(W7601) CRX2
- 7 BLK(W4400) LEFT REAR JACK
- 8 N/C
- 9 N/C
- 10 N/C
- 11 BLK(W5100) CYLINDER RETRACT
- 12 N/C

AP35151 (GRAY)  
PIN

- 1 BLK(W6800) SW BATT
- 2 BLK(W6800) SW BATT
- 3 WHT(W6230) GROUND
- 4 WHT(W6230) GROUND

AP35171 CN100 (GRAY)  
PIN

- 1 BLK(W7504) ENGINE DOOR OPEN
- 2 N/C
- 3 N/C
- 4 BLK(W3000) RIGHT REAR JACK WARN. SWITCH
- 5 BLK(W4000) LEFT REAR JACK WARN. SWITCH
- 6 WHT(W6230) GROUND
- 7 N/C
- 8 N/C
- 9 BLK(W3200) RIGHT REAR JACK PRESS. SWITCH
- 10 BLK(W4200) LEFT REAR JACK PRESS. SWITCH
- 11 N/C
- 12 BLK(W7505) ENGINE DOOR CLOSE

AP35171 CN9 (BLACK)  
PIN

- 1 BLK(W7696) SYSTEM WAKE UP
- 2 N/C
- 3 RED(W6800) SWITCHED BATTERY
- 4 WHT(W6230) GROUND
- 5 CAN SHIELD
- 6 RED(W6110) IGNITION
- 7 GRN CAN LOW
- 8 YEL CAN HI

AP35171 CN11 (GRAY)  
PIN

- 1 RED(W6110) IGNITION
- 2 N/C
- 3 N/C
- 4 N/C
- 5 RED(W6120) ACCESSORY
- 6 RED(W6100) COACH BATTERY
- 7 WHT(W6230) GROUND
- 8 N/C
- 9 N/C
- 10 N/C
- 11 BLK(W9000) PARK BRAKE SWITCH
- 12 RED(W6101) ENGINE BATTERY

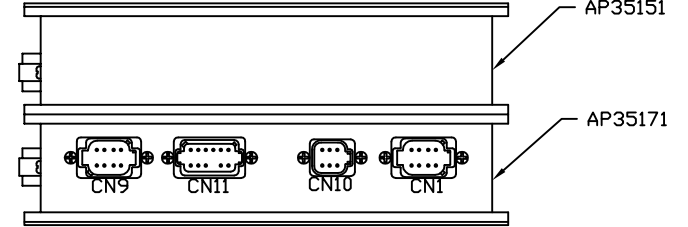
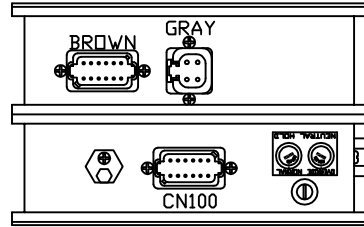
AP35171 CN10 (GRAY)  
PIN

- 1 BLK(W7599) SWITCH LIGHT CONTROL
- 2 RED(W6100) RESET OUT
- 3 BLK(W7550) RESET IN
- 4 RED(W6121) WARN LIGHT SUPPLY
- 5 WHT(W6230) SWITCH LIGHT SUPPLY
- 6 BLK(W7699) WARN LIGHT/BUZZER CONTROL

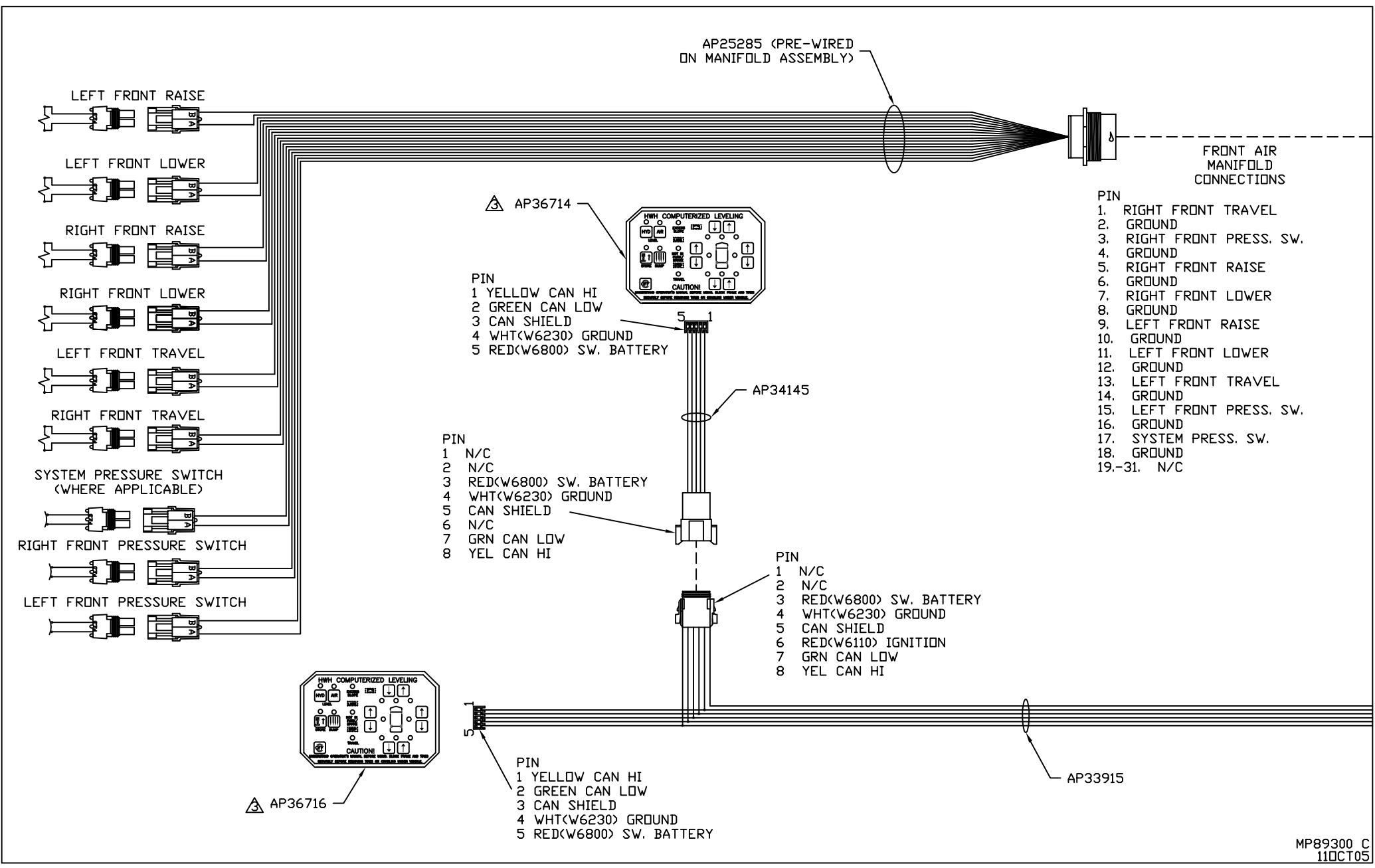
AP35171 CN1 (GREEN)  
PIN

- 1 BLK(W8500) MASTER RELAY CNTRL
- 2 BLK(W8100) 3000 LB PSW.
- 3 BLK(W8101) 50 LB PSW
- 4 BLK(W8600) PMP RELAY CNTRL
- 5 BLK(W9900) SPEED SWITCH
- 6 BLK(W9901) SW BATT FROM PUMP RELAY
- 7 N/C
- 8 N/C

AP35152  
HYD AIR/1 RM./CCM  
MODULE



NOTE: WIRE NUMBERS ON THIS SHEET ARE REFERENCED TO HARNESS PLUGS.



AP25285 (PRE-WIRED ON MANIFOLD ASSEMBLY)

FRONT AIR MANIFOLD CONNECTIONS

- PIN
- 1. RIGHT FRONT TRAVEL
  - 2. GROUND
  - 3. RIGHT FRONT PRESS. SW.
  - 4. GROUND
  - 5. RIGHT FRONT RAISE
  - 6. GROUND
  - 7. RIGHT FRONT LOWER
  - 8. GROUND
  - 9. LEFT FRONT RAISE
  - 10. GROUND
  - 11. LEFT FRONT LOWER
  - 12. GROUND
  - 13. LEFT FRONT TRAVEL
  - 14. GROUND
  - 15. LEFT FRONT PRESS. SW.
  - 16. GROUND
  - 17. SYSTEM PRESS. SW.
  - 18. GROUND
  - 19.-31. N/C

AP36714

- PIN
- 1 YELLOW CAN HI
  - 2 GREEN CAN LOW
  - 3 CAN SHIELD
  - 4 WHT(W6230) GROUND
  - 5 RED(W6800) SW. BATTERY

AP34145

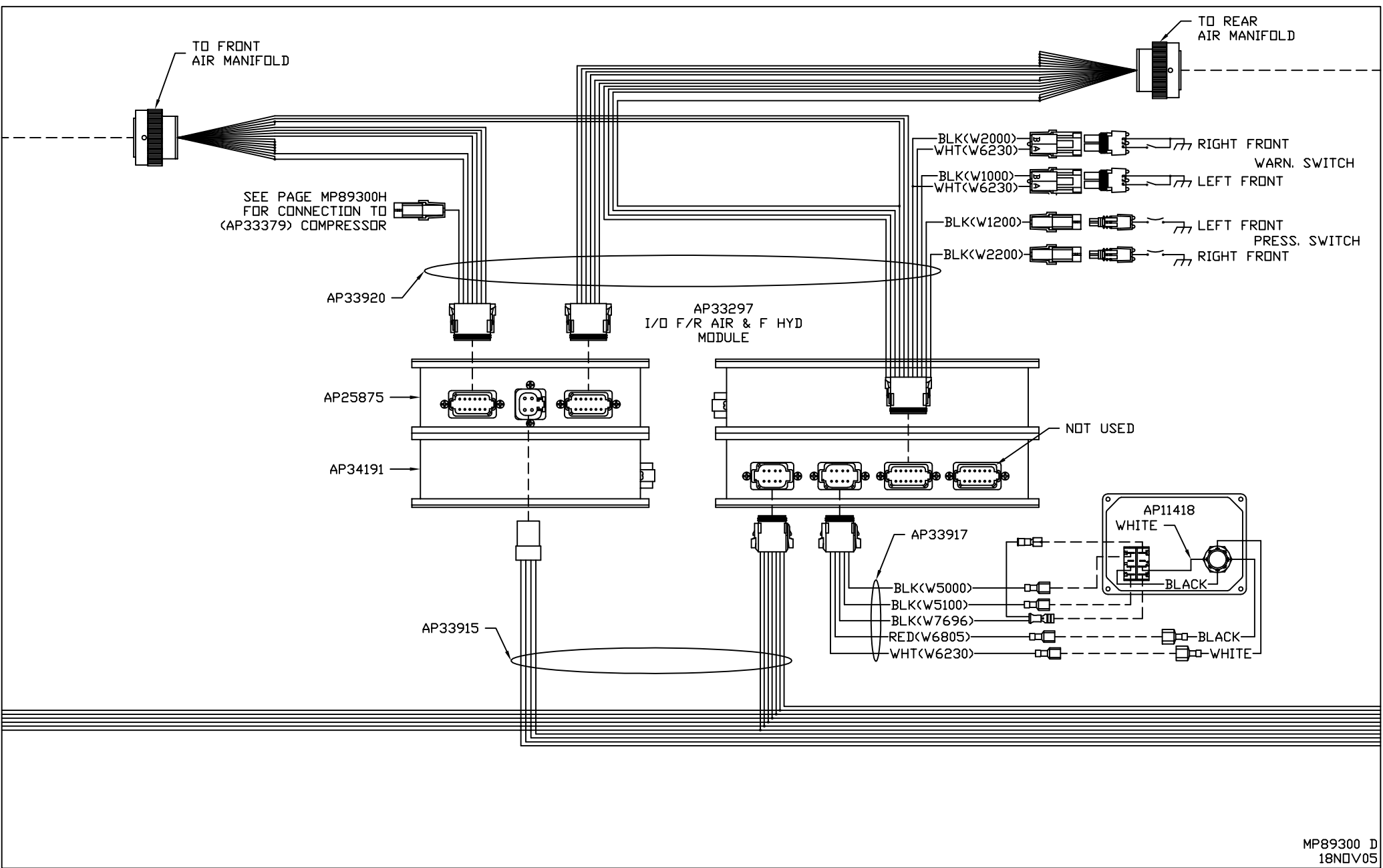
- PIN
- 1 N/C
  - 2 N/C
  - 3 RED(W6800) SW. BATTERY
  - 4 WHT(W6230) GROUND
  - 5 CAN SHIELD
  - 6 N/C
  - 7 GRN CAN LOW
  - 8 YEL CAN HI

- PIN
- 1 N/C
  - 2 N/C
  - 3 RED(W6800) SW. BATTERY
  - 4 WHT(W6230) GROUND
  - 5 CAN SHIELD
  - 6 RED(W6110) IGNITION
  - 7 GRN CAN LOW
  - 8 YEL CAN HI

AP36716

- PIN
- 1 YELLOW CAN HI
  - 2 GREEN CAN LOW
  - 3 CAN SHIELD
  - 4 WHT(W6230) GROUND
  - 5 RED(W6800) SW. BATTERY

AP33915



- PIN
1. RIGHT REAR TRAVEL
  2. GROUND
  3. RIGHT REAR PRESS. SW.
  4. GROUND
  5. RIGHT REAR RAISE
  6. GROUND
  7. RIGHT REAR LOWER
  8. GROUND
  9. LEFT REAR RAISE
  10. GROUND
  11. LEFT REAR LOWER
  12. GROUND
  13. LEFT REAR TRAVEL
  14. GROUND
  15. LEFT REAR PRESS. SW.
  16. GROUND
  17. SYSTEM PRESS. SW.
  18. GROUND
  - 19.-31. N/C

REAR AIR  
MANIFOLD  
CONNECTIONS

AP25285 (PRE-WIRED  
ON MANIFOLD ASSEMBLY)

LEFT REAR RAISE

LEFT REAR LOWER

RIGHT REAR RAISE

RIGHT REAR LOWER

LEFT REAR TRAVEL

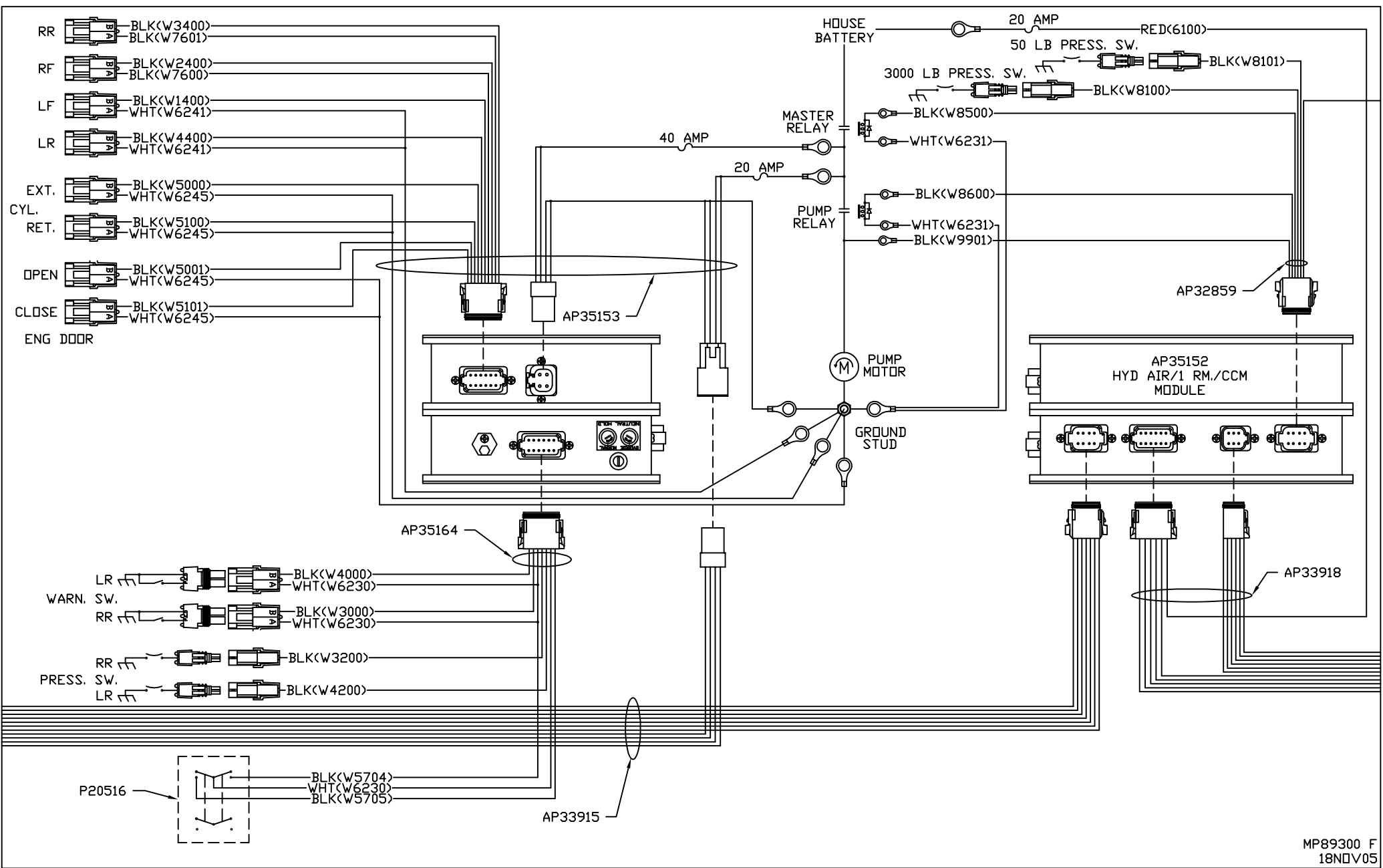
RIGHT REAR TRAVEL

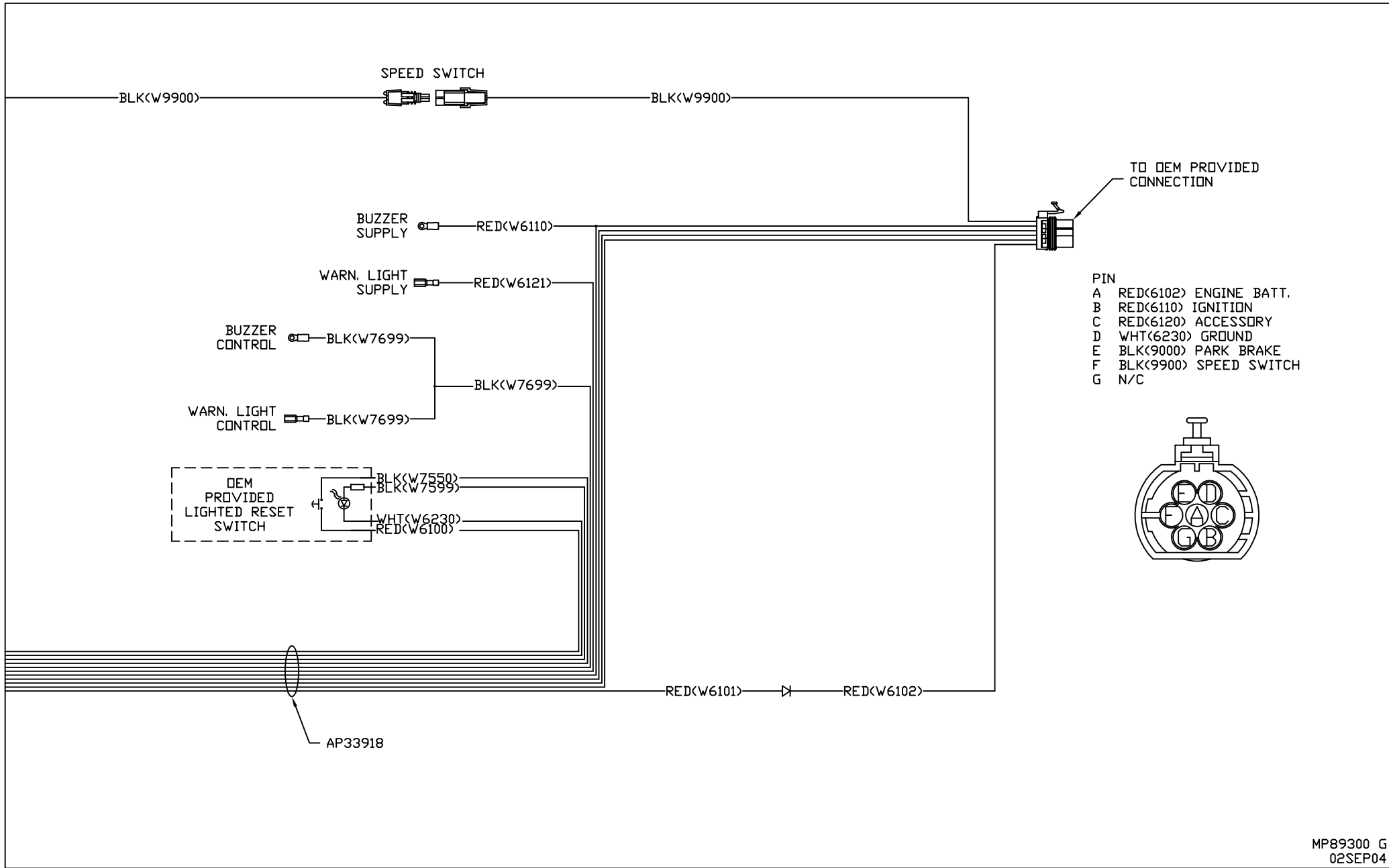
SYSTEM PRESSURE SWITCH  
(WHERE APPLICABLE)

RIGHT REAR PRESSURE SWITCH

LEFT REAR PRESSURE SWITCH

AP33915





AP33379  
COMPRESSOR  
ASSEMBLY

WATER TRAP DUMP

SEE SHEET MP89300D  
FOR CONNECTION TO  
AP33920 HARNESS  
ON AP33297 CONTROL BOX

ACC TANK VALVE

WET AIR TANK

DEM PROVIDED  
SWITCH

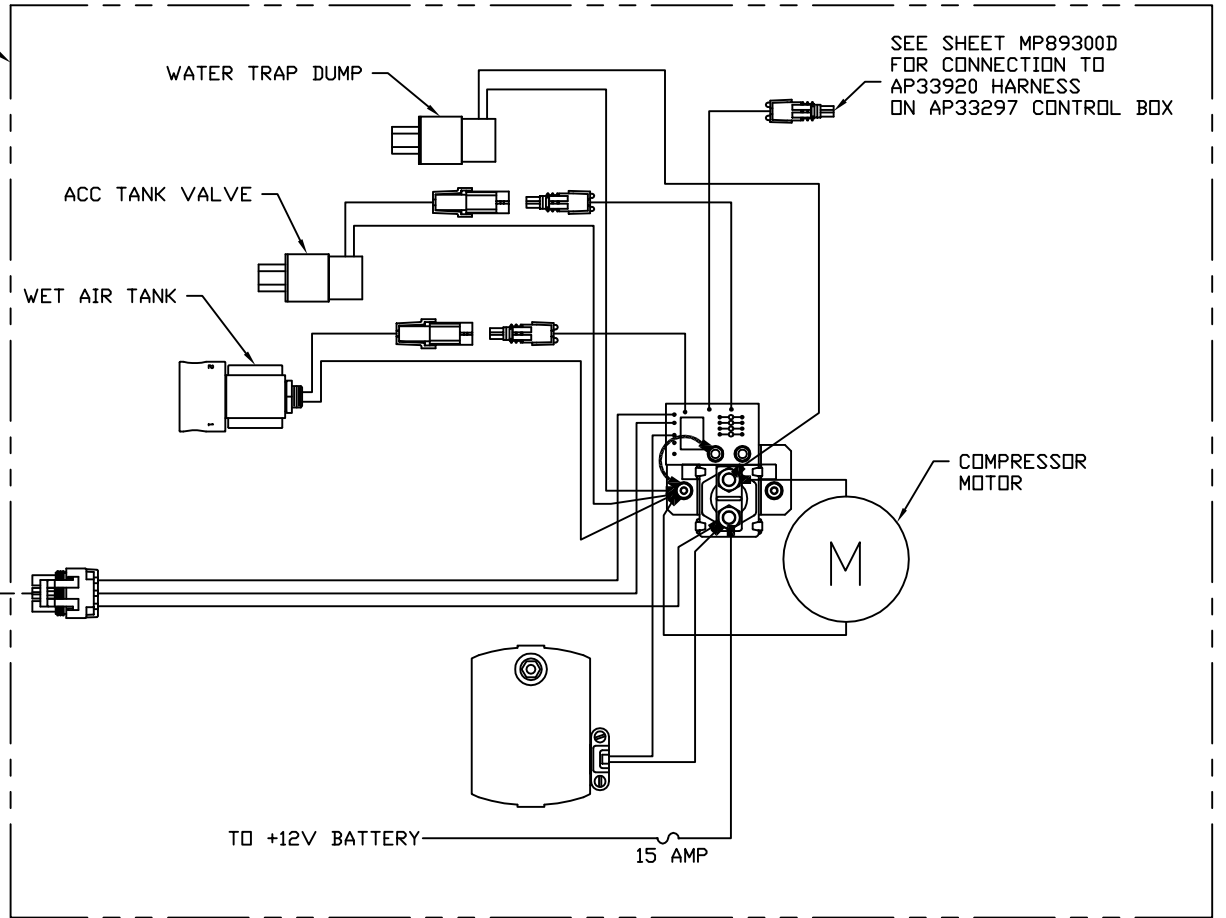
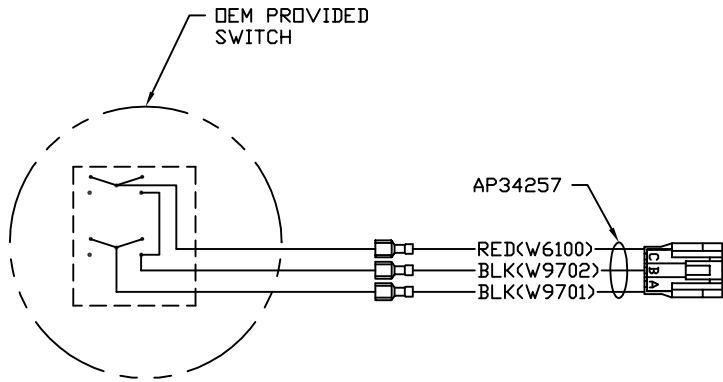
COMPRESSOR  
MOTOR

AP34257

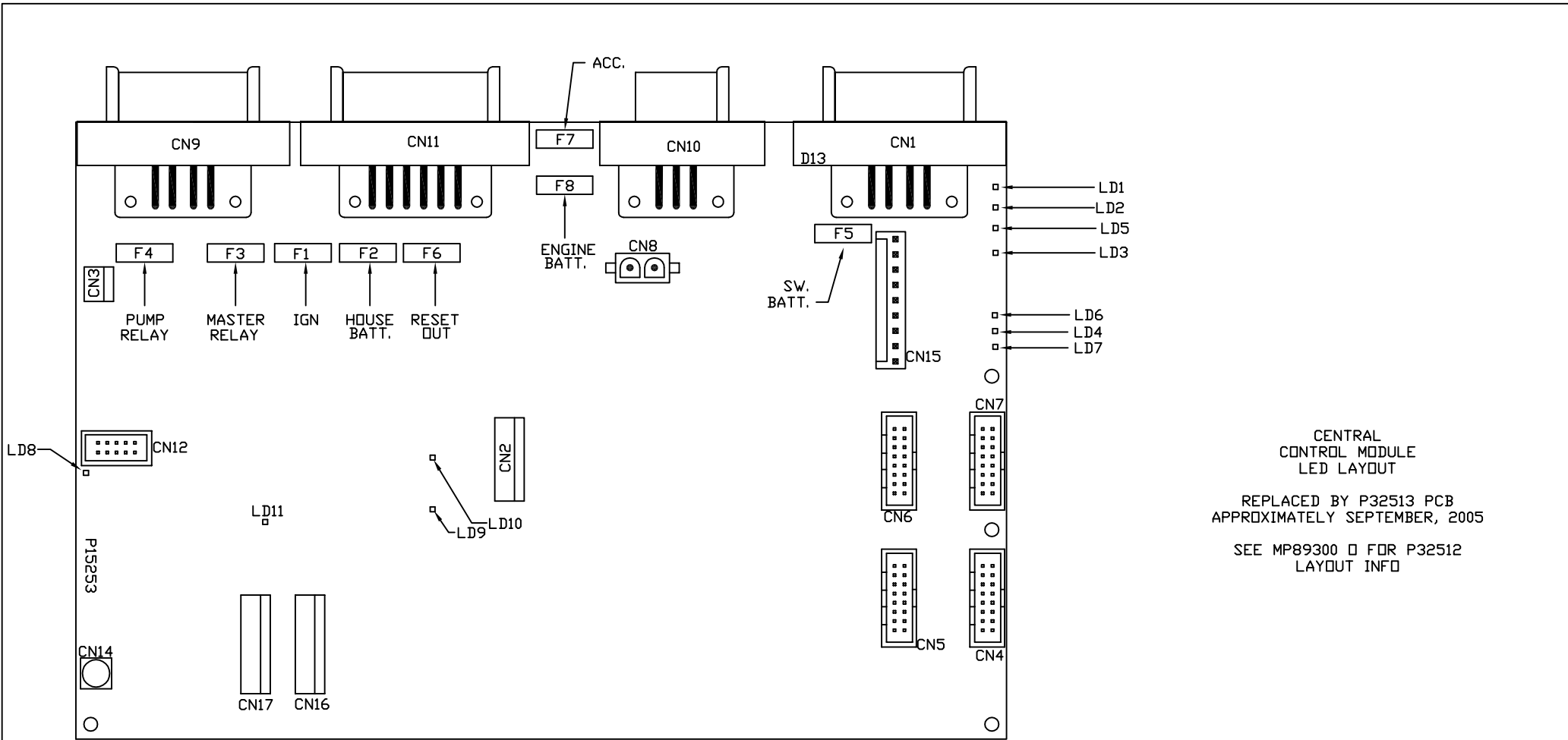
RED<W6100>  
BLK<W9702>  
BLK<W9701>

TO +12V BATTERY

15 AMP

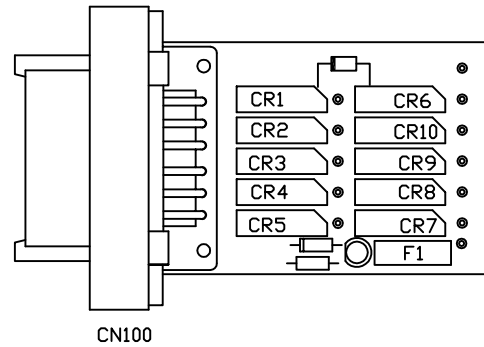






LED #	CONNECTOR	COLOR	DESCRIPTION
LED 1	CN 9 PIN 1	RED	MASTER RELAY
LED 2	CN 9 PIN 4	RED	PUMP RELAY
LED 3	CN 1 PIN 3	RED	SW 12V
LED 4	CN 11 PIN 12	RED	ENGINE BATT
LED 5	CN 9 PIN 5	RED	SPEED SWITCH
LED 6	NOT USED	RED	NOT USED

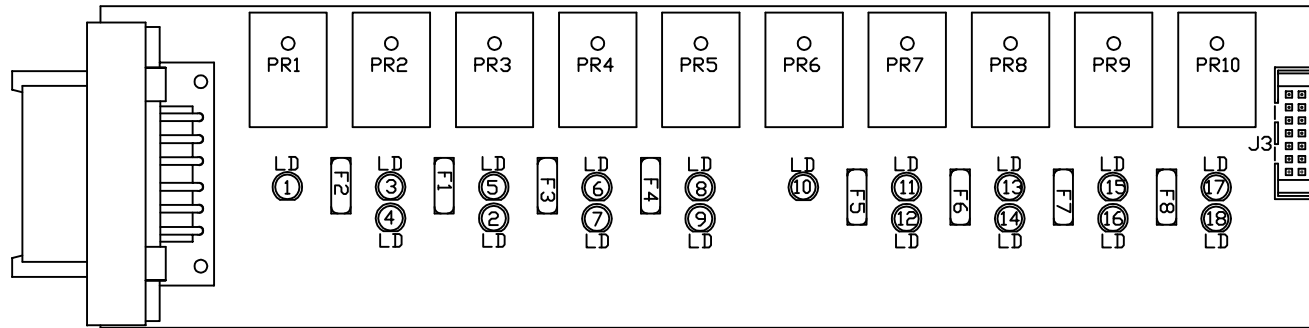
LED #	CONNECTOR	COLOR	DESCRIPTION
LED 7	CN 1 PIN 7 & 8	RED	LINK LIGHT
LED 8	NOT USED	RED	NOT USED
LED 9	CN 9 PIN 3	RED	50 LBS. PSW
LED 10	CN 9 PIN 2	RED	3000 LBS. PSW
LED 11	CN 11 PIN 11	RED	PARK BRAKE



REAR  
HYDRAULIC PSW/  
WARNING SWITCHES

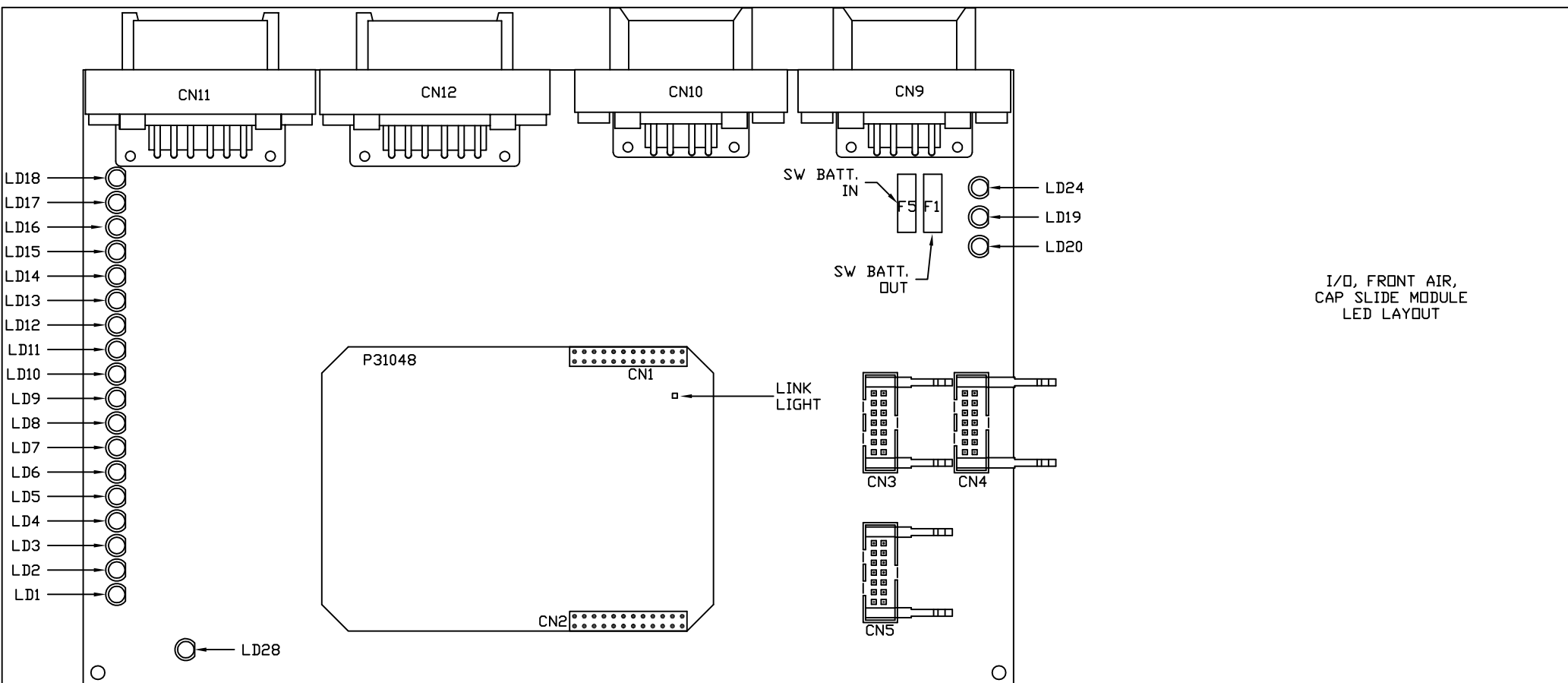
CONNECTOR	REED SWITCH	DESCRIPTION
CN 100 PIN 1	CR1	ENGINE DOOR OPEN
CN 100 PIN 2	---	NOT USED
CN 100 PIN 3	---	NOT USED
CN 100 PIN 4	CR4	RR WARNING
CN 100 PIN 5	CR5	LR WARNING
CN 100 PIN 6	CR6	GROUND

CONNECTOR	REED SWITCH	DESCRIPTION
CN 100 PIN 7	---	NOT USED
CN 100 PIN 8	---	NOT USED
CN 100 PIN 9	CR9	HYD RR PSW
CN 100 PIN 10	CR10	HYD LR PSW
CN 100 PIN 11	---	NOT USED
CN 100 PIN 12	CR12	ENGINE DOOR CLOSE



LEVELING  
LED LAYOUT

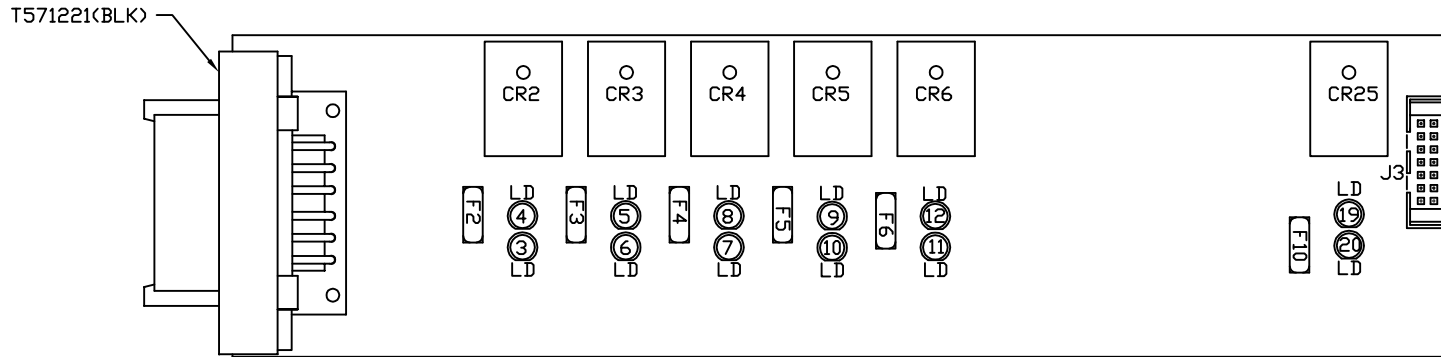
LED #	COLOR	INPUT J3	FUSE #	OUTPUT	RELAY #	DESCRIPTION
LED1	YELLOW	PIN 13	---	PIN 1	PR1	CRX1 (COIL)
LED2	RED	PIN 11	F1	PIN 3	PR3	RF JACK (CONTACT)
LED3	YELLOW	PIN 12	---	---	PR2	LF JACK (COIL)
LED4	RED	---	F2	PIN 2	PR2	LF JACK (CONTACT)
LED5	YELLOW	PIN 11	---	---	PR3	RF JACK (COIL)
LED6	YELLOW	PIN 10	---	---	PR4	CYL. EXT. (COIL)
LED7	RED	---	F3	PIN 4	PR4	CYL. RET. (CONTACT)
LED8	YELLOW	PIN 9	---	---	PR5	RR JACK (COIL)
LED9	RED	---	F4	PIN 5	PR5	RR JACK (CONTACT)
LED10	YELLOW	PIN 8	---	PIN 6	PR6	CRX2 (COIL)
LED11	YELLOW	PIN 7	---	---	PR7	LR JACK (COIL)
LED12	RED	---	F5	PIN 7	PR7	LR JACK (CONTACT)
LED13	YELLOW	---	---	---	PR8	ENG. DOOR OPEN (COIL)
LED14	RED	---	F6	PIN 10	PR8	ENG. DOOR OPEN (CONTACT)
LED15	YELLOW	---	---	---	PR9	ENG. DOOR CLOSED (COIL)
LED16	RED	---	F7	PIN 9	PR9	ENG. DOOR CLOSED (CONTACT)
LED17	YELLOW	PIN 4	---	---	PR10	GEN. RET. (COIL)
LED18	RED	---	F8	PIN 8	PR10	GEN. RET. (CONTACT)



I/O, FRONT AIR,  
CAP SLIDE MODULE  
LED LAYOUT

LED #	CONNECTOR	COLOR	DESCRIPTION
LED 1	CN 10 PIN 4	RED	EXTEND
LED 2	CN 10 PIN 5	RED	RETRACT
LED 3	CN 12 PIN 8	GREEN	LF JACK WARN SW
LED 4	CN 12 PIN 5	YELLOW	LR AIR PSW
LED 5	NOT USED	YELLOW	NOT USED
LED 6	CN12 PIN 2	YELLOW	LF AIR PSW
LED 7	NOT USED	GREEN	NOT USED
LED 8	CN 12 PIN 3	GREEN	RF AIR PSW
LED 9	NOT USED	GREEN	NOT USED
LED 10	CN 12 PIN 10	GREEN	RF JACK WARN SW
LED 11	NOT USED	YELLOW	NOT USED
LED 12	CN 12 PIN 1	YELLOW	SYSTEM PSW
LED 13	NOT USED	YELLOW	NOT USED
LED 14	NOT USED	YELLOW	NOT USED

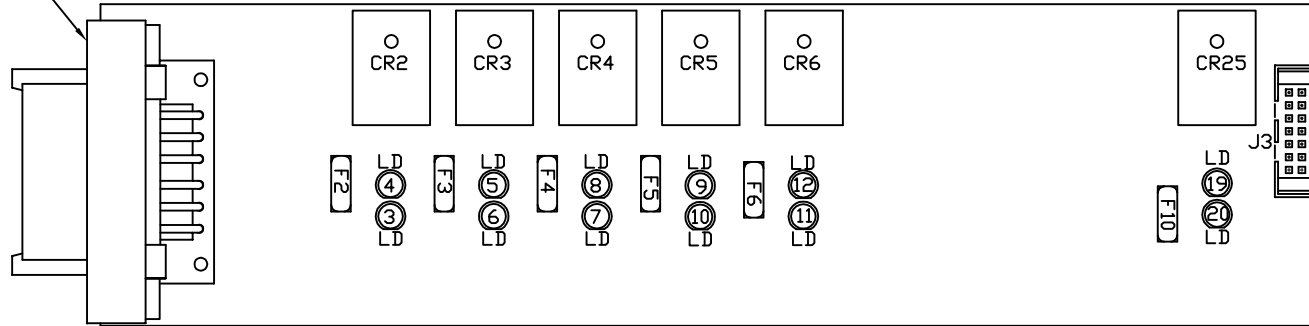
LED #	CONNECTOR	COLOR	DESCRIPTION
LED 15	NOT USED	GREEN	NOT USED
LED 16	CN 12 PIN 4	GREEN	RR AIR PSW
LED 17	NOT USED	GREEN	NOT USED
LED 18	CN 12 PIN 9	GREEN	LF JACK PSW
LED 19	CN11/CN12 PIN 7	RED	SW BATT OUT
LED 20	CN 9 PIN 3	RED	SW BATT IN
LED 24	CN 10 PIN 7	RED	SYSTEM WAKE UP
LED 28	CN 12 PIN 11	RED	RF JACK PSW



REAR AIR  
LED LAYOUT

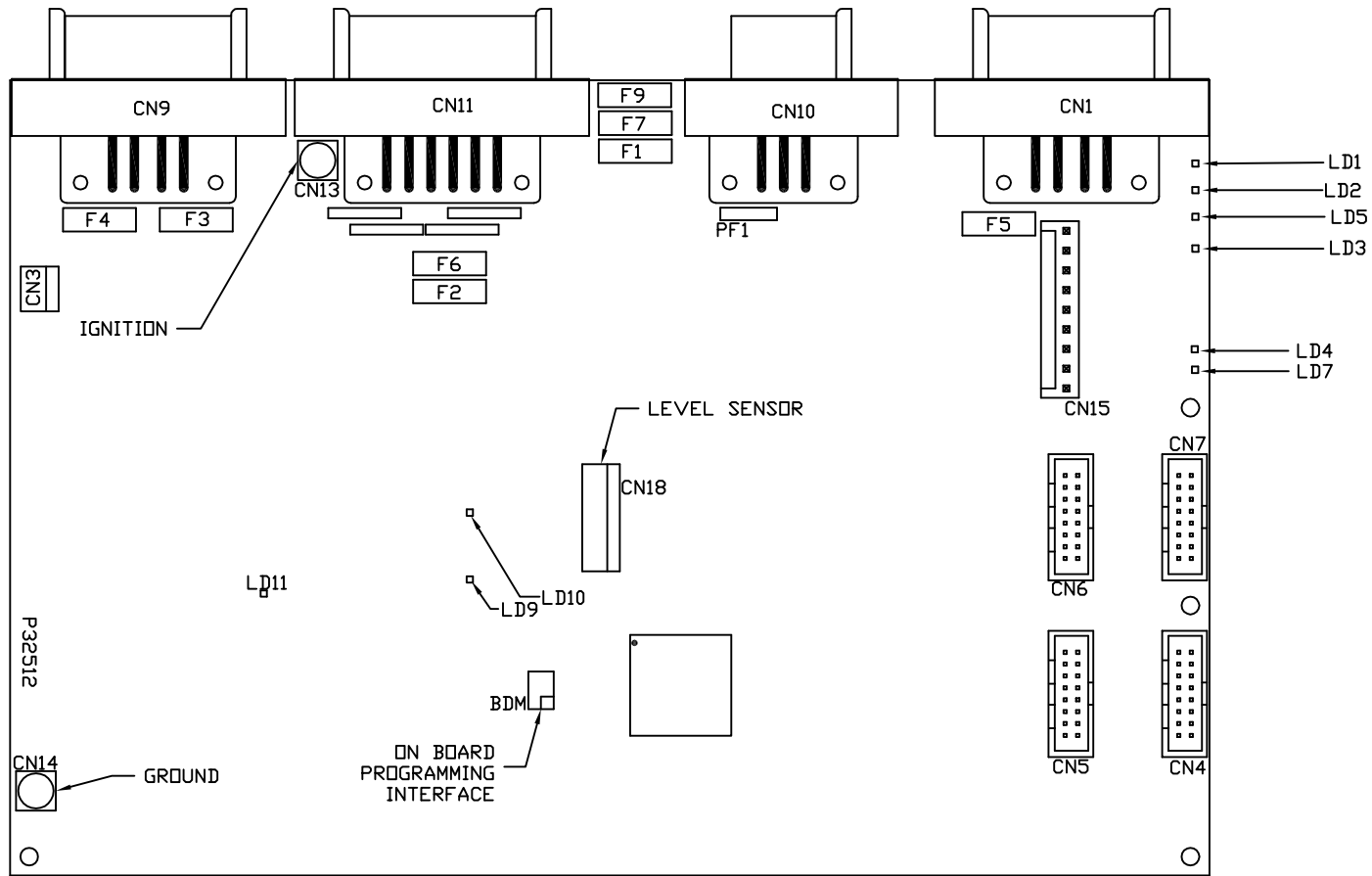
LED #	COLOR	INPUT J3	FUSE #	OUTPUT	RELAY #	DESCRIPTION
LED1	YELLOW	PIN 13	---	---	CR1	NOT USED
LED2	RED	---	FUSE 1	PIN 1	CR1	NOT USED
LED3	RED	---	FUSE 2	PIN 2	CR2	LEFT REAR RAISE (CONTACT)
LED4	YELLOW	PIN 12	---	---	CR2	LEFT REAR RAISE (COIL)
LED5	YELLOW	PIN 11	---	---	CR3	LEFT REAR LOWER (COIL)
LED6	RED	---	FUSE 3	PIN 3	CR3	LEFT REAR LOWER (CONTACT)
LED7	RED	---	FUSE 4	PIN 4	CR4	RIGHT REAR RAISE (CONTACT)
LED8	YELLOW	PIN 10	---	---	CR4	RIGHT REAR RAISE (COIL)
LED9	YELLOW	PIN 9	---	---	CR5	RIGHT REAR LOWER (COIL)
LED10	RED	---	FUSE 5	PIN 5	CR5	RIGHT REAR LOWER (CONTACT)
LED11	RED	---	FUSE 6	PIN 6	CR6	NOT USED
LED12	YELLOW	PIN 8	---	---	CR6	NOT USED
LED13	RED	---	FUSE 7	PIN 10	CR7	NOT USED
LED14	YELLOW	PIN 7	---	---	CR7	NOT USED
LED15	YELLOW	PIN 6	---	---	CR8	NOT USED
LED16	RED	---	FUSE8	PIN 9	CR8	NOT USED
LED17	YELLOW	PIN 5	---	---	CR9	NOT USED
LED18	RED	---	FUSE 9	PIN 7	CR9	NOT USED
LED19	YELLOW	PIN 4	---	---	CR25	REAR TRAVEL (COIL)
LED20	RED	---	FUSE 10	PIN 8	CR25	REAR TRAVEL (CONTACT)

T571224<BRN>



FRONT AIR  
LED LAYOUT

LED #	COLOR	INPUT J3	FUSE #	OUTPUT	RELAY #	DESCRIPTION
LED1	YELLOW	PIN 13	---	---	CR1	NOT USED
LED2	RED	---	FUSE 1	PIN 1	CR1	NOT USED
LED3	RED	---	FUSE 2	PIN 2	CR2	LEFT FRONT RAISE <CONTACT>
LED4	YELLOW	PIN 12	---	---	CR2	LEFT FRONT RAISE <COIL>
LED5	YELLOW	PIN 11	---	---	CR3	LEFT FRONT LOWER <COIL>
LED6	RED	---	FUSE 3	PIN 3	CR3	LEFT FRONT LOWER <CONTACT>
LED7	RED	---	FUSE 4	PIN 4	CR4	RIGHT FRONT RAISE <CONTACT>
LED8	YELLOW	PIN 10	---	---	CR4	RIGHT FRONT RAISE <COIL>
LED9	YELLOW	PIN 9	---	---	CR5	RIGHT FRONT LOWER <COIL>
LED10	RED	---	FUSE 5	PIN 5	CR5	RIGHT FRONT LOWER<CONTACT>
LED11	RED	---	FUSE 6	PIN 6	CR6	COMPRESSOR <CONTACT>
LED12	YELLOW	PIN 8	---	---	CR6	COMPRESSOR <COIL>
LED13	RED	---	FUSE 7	PIN 10	CR7	NOT USED
LED14	YELLOW	PIN 7	---	---	CR7	NOT USED
LED15	YELLOW	PIN 6	---	---	CR8	NOT USED
LED16	RED	---	FUSE8	PIN 9	CR8	NOT USED
LED17	YELLOW	PIN 5	---	---	CR9	NOT USED
LED18	RED	---	FUSE 9	PIN 7	CR9	NOT USED
LED19	YELLOW	PIN 4	---	---	CR25	FRONT TRAVEL <COIL>
LED20	RED	---	FUSE 10	PIN 8	CR25	FRONT TRAVEL <CONTACT>



CENTRAL  
CONTROL MODULE  
LED LAYOUT  
EFFECTIVE APPROXIMATELY  
SEPTEMBER, 2005

LED #	CONNECTOR	COLOR	DESCRIPTION
LED 1	CN 9 PIN 1	RED	MASTER RELAY
LED 2	CN 9 PIN 4	RED	PUMP RELAY
LED 3	CN 1 PIN 3	RED	SW 12V
LED 4	CN 11 PIN 12	RED	ENGINE BATT
LED 5	CN 9 PIN 5	RED	SPEED SWITCH
LED 7	CN 1 PIN 7 & 8	RED	LINK LIGHT
LED 8	NOT USED	RED	NOT USED
LED 9	CN 9 PIN 3	RED	50 LBS. PSW
LED 10	CN 9 PIN 2	RED	3000 LBS. PSW
LED 11	CN 11 PIN 11	RED	PARK BRAKE

FUSE #	DESCRIPTION
PF1	RESET OUT
F7	ACCESSORY
F1	IGNITION
F2	HOUSE BATTERY
F3	MASTER RELAY
F4	PUMP RELAY
F5	SW. BATT TO CAN MODULES
F6	ENGINE BATTERY
F9	POWER TO CN100