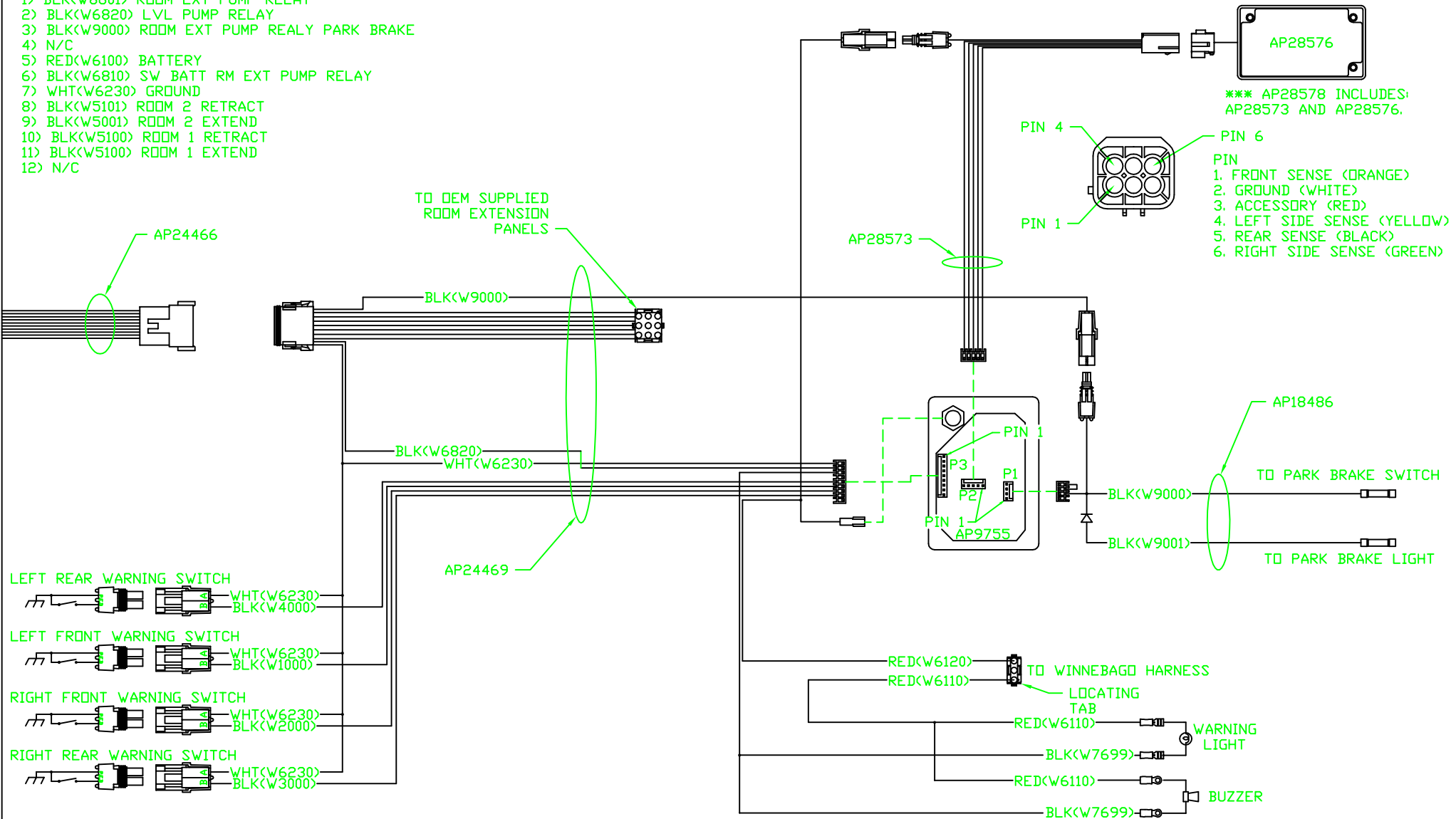


NOTE: INSTALLATION MUST CONFORM TO GOOD SHOP PRACTICES, SAE STANDARDS, RVIA STANDARDS, AND OTHER APPLICABLE STANDARDS.

			HWH			I-80 EXIT 267 SOUTH RT 1 MOSCOW, IOWA 52760			
			SCALE 1:3	DATE 29OCT04	DRAWN BY .				
1	15FEB08	ADDED INSTALLATION NOTE				SYSTEM SCHEMATIC ELEC			
NO.	DATE	REVISION							
THE INFORMATION DISCLOSED ON THIS DRAWING IS CONFIDENTIAL AND MUST NOT BE DISCLOSED OR USED IN ANY MANNER WHICH WILL BE DETRIMENTAL TO THE HWH CORPORATION						DRAWING NUMBER MP89350 A/B			

- PIN
- 1) BLK(W8601) ROOM EXT PUMP RELAY
  - 2) BLK(W6820) LVL PUMP RELAY
  - 3) BLK(W9000) ROOM EXT PUMP REALY PARK BRAKE
  - 4) N/C
  - 5) RED(W6100) BATTERY
  - 6) BLK(W6810) SW BATT RM EXT PUMP RELAY
  - 7) WHT(W6230) GROUND
  - 8) BLK(W5101) ROOM 2 RETRACT
  - 9) BLK(W5001) ROOM 2 EXTEND
  - 10) BLK(W5100) ROOM 1 RETRACT
  - 11) BLK(W5100) ROOM 1 EXTEND
  - 12) N/C



NOTE: INSTALLATION MUST CONFORM TO GOOD SHOP PRACTICES, SAE STANDARDS, RVIA STANDARDS, AND OTHER APPLICABLE STANDARDS.

MP89350 B  
15FEB08