

AP25875 (BROWN)

- PIN
- 1 N/C
  - 2 BLK(W1500) LEFT FRONT RAISE
  - 3 BLK(W1600) LEFT FRONT LOWER
  - 4 BLK(W2500) RIGHT FRONT RAISE
  - 5 BLK(W2600) RIGHT FRONT LOWER
  - 6 BLK(W9700) COMPRESSOR
  - 7 N/C
  - 8 BLK(W1700) FRONT TRAVEL
  - 9 N/C
  - 10 N/C
  - 11 WHT (W6254) GROUND
  - 12 N/C

AP25875 (GRAY)

- PIN
- 1 BLK(W6801) SW BATT
  - 2 BLK(W6801) SW BATT
  - 3 WHT(W6231) GROUND
  - 4 WHT(W6231) GROUND

AP25875 (BLACK)

- PIN
- 1 N/C
  - 2 BLK(W4500) LEFT REAR RAISE
  - 3 BLK(W4600) LEFT REAR LOWER
  - 4 BLK(W3500) RIGHT REAR RAISE
  - 5 BLK(W3600) RIGHT REAR LOWER
  - 6 N/C
  - 7 N/C
  - 8 BLK(W3700) REAR TRAVEL
  - 9 N/C
  - 10 N/C
  - 11 WHT (W6258) GROUND
  - 12 N/C

AP34191 CN9(BLACK)

- PIN
- 1 BLK(W7696) SYSTEM WAKE UP
  - 2 N/C
  - 3 RED(W6800) SW BATTERY
  - 4 WHT(W6230) GROUND
  - 5 CAN SHIELD
  - 6 RED(W6110) IGNITION
  - 7 GRN CAN LOW
  - 8 YEL CAN HI

AP34191 CN10(GRAY)

- PIN
- 1 N/C
  - 2 N/C
  - 3 N/C
  - 4 BLK(W5000) EXTEND
  - 5 BLK(W5100) RETRACT
  - 6 RED(W6805) BATTERY
  - 7 BLK(W7696) SYSTEM WAKE-UP
  - 8 WHT(W6230) GROUND

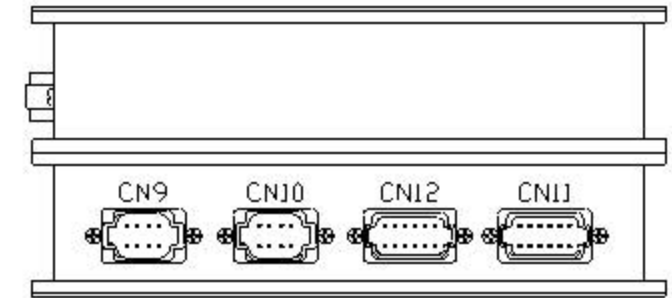
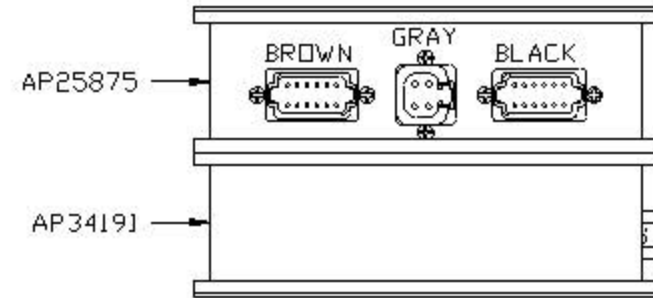
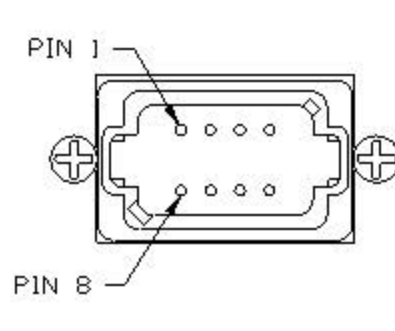
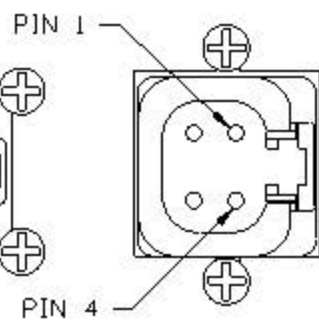
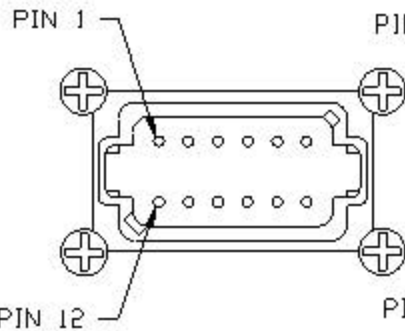
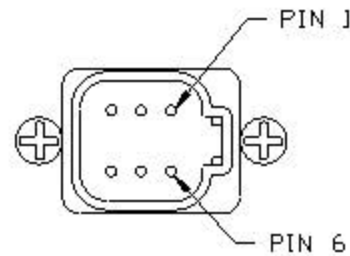
AP34191 CN12(GRAY)

- PIN
- 1 BLK(W3215) AIR SYSTEM PRESSURE SWITCH
  - 2 BLK(W1210) LEFT FRONT AIR PRESS. SWITCH
  - 3 BLK(W2210) RIGHT FRONT AIR PRESS. SWITCH
  - 4 BLK(W3210) RIGHT REAR AIR PRESS. SWITCH
  - 5 BLK(W4210) LEFT REAR AIR PRESS. SWITCH
  - 6 WHT(W6230) GROUND
  - 7 N/C
  - 8 BLK(W1000) LEFT FRONT JACK WARN. SWITCH
  - 9 BLK(W1200) LEFT FRONT JACK PRESS. SWITCH
  - 10 BLK(W2000) RIGHT FRONT JACK WARN. SWITCH
  - 11 BLK(W2200) RIGHT FRONT JACK PRESS. SWITCH
  - 12 N/C

AP34191 CN11(GREEN)

- PIN
- 1 N/C
  - 2 N/C
  - 3 N/C
  - 4 N/C
  - 5 N/C
  - 6 N/C
  - 7 N/C
  - 8 N/C
  - 9 N/C
  - 10 N/C
  - 11 N/C
  - 12 N/C

NOTE: WIRE NUMBERS ON THIS SHEET ARE REFERENCED TO HARNESS PLUGS.



AP33297  
I/O F/R AIR & F HYD  
MODULE

			HWH I-80 EXIT 267 SOUTH RT 1 MOSCOW, IDWA 52760		
3	25OCT07	ADDED INSTALLATION NOTE	SCALE 1:3	DATE 14NOV05	DRAWN BY
2	03MAY07	ADDED ENG DOOR ON SH B			
1	03MAY07	CHG'D PIN ASSG ON SH K			
NO.	DATE	REV/STN	SYSTEM SCHEMATIC ELEC		

THE INFORMATION DISCLOSED ON THIS DRAWING IS CONFIDENTIAL AND MUST NOT BE DISCLOSED OR USED IN ANY MANNER WHICH WILL BE DETRIMENTAL TO THE HWH CORPORATION

DRAWING NUMBER  
MP89566 A/N

NOTE: INSTALLATION MUST CONFORM TO GOOD SHOP PRACTICES, SAE STANDARDS, RVIA STANDARDS, AND OTHER APPLICABLE STANDARDS.

NOTE: PIN NUMBERS ARE TYPICAL TO ALL 4, 6, 8, AND 12 PIN PLUGS.

AP35151 (BROWN)  
PIN

- 1 BLK(W7600) CRX1
- 2 BLK(W1400) LEFT FRONT JACK
- 3 BLK(W2400) RIGHT FRONT JACK
- 4 BLK(W5000) CYLINDER EXTEND
- 5 BLK(W3400) RIGHT REAR JACK
- 6 BLK(W7601) CRX2
- 7 BLK(W4400) LEFT REAR JACK
- 8 BLK(W5101) ENGINE DOOR CLOSE
- 9 N/C
- 10 BLK(W5001) ENGINE DOOR OPEN
- 11 BLK(W5100) CYLINDER RETRACT
- 12 N/C

AP35151 (GRAY)  
PIN

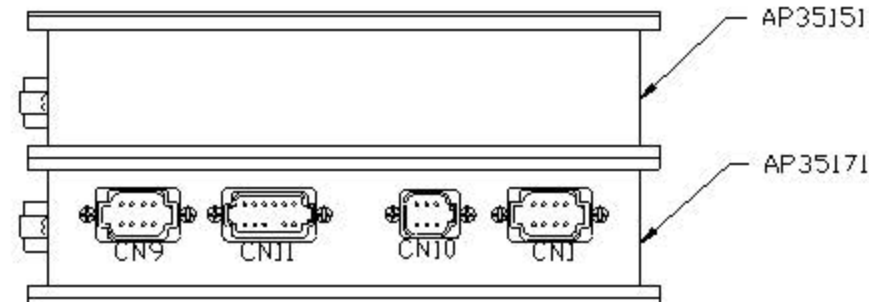
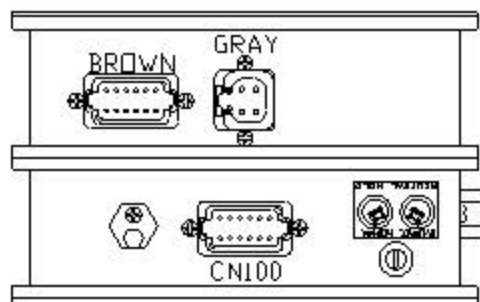
- 1 BLK(W6800) SW BATT
- 2 BLK(W6800) SW BATT
- 3 WHT(W6230) GROUND
- 4 WHT(W6230) GROUND



AP35171 CN100 (GRAY)  
PIN

- 1 BLK(W7504) ENGINE DOOR OPEN
- 2 N/C
- 3 N/C
- 4 BLK(W3000) RIGHT REAR JACK WARN. SWITCH
- 5 BLK(W4000) LEFT REAR JACK WARN. SWITCH
- 6 WHT(W6230) GROUND
- 7 N/C
- 8 N/C
- 9 BLK(W3200) RIGHT REAR JACK PRESS. SWITCH
- 10 BLK(W4200) LEFT REAR JACK PRESS. SWITCH
- 11 N/C
- 12 BLK(W7505) ENGINE DOOR CLOSE

AP35152  
HYD AIR/I RM./CCM  
MODULE



AP35171 CN9 (BLACK)  
PIN

- 1 BLK(W7696) SYSTEM WAKE UP
- 2 N/C
- 3 RED(W6800) SWITCHED BATTERY
- 4 WHT(W6230) GROUND
- 5 CAN SHIELD
- 6 RED(W6110) IGNITION
- 7 GRN CAN LOW
- 8 YEL CAN HI

AP35171 CN11 (GRAY)  
PIN

- 1 RED(W6110) IGNITION
- 2 N/C
- 3 N/C (KEY PIN)
- 4 N/C
- 5 RED(W6120) ACCESSORY
- 6 RED(W6100) COACH BATTERY
- 7 WHT(W6230) GROUND
- 8 N/C
- 9 N/C
- 10 N/C
- 11 BLK(W9000) PARK BRAKE SWITCH
- 12 RED(W6101) ENGINE BATTERY

AP35171 CN10 (GRAY)  
PIN

- 1 BLK(W7599) SWITCH LIGHT CONTROL
- 2 RED(W6100) RESET OUT
- 3 BLK(W7550) RESET IN
- 4 RED(W6121) WARN LIGHT SUPPLY
- 5 WHT(W6230) SWITCH LIGHT SUPPLY
- 6 BLK(W7699) WARN LIGHT/BUZZER CONTROL

AP35171 CN1 (GREEN)  
PIN

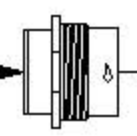
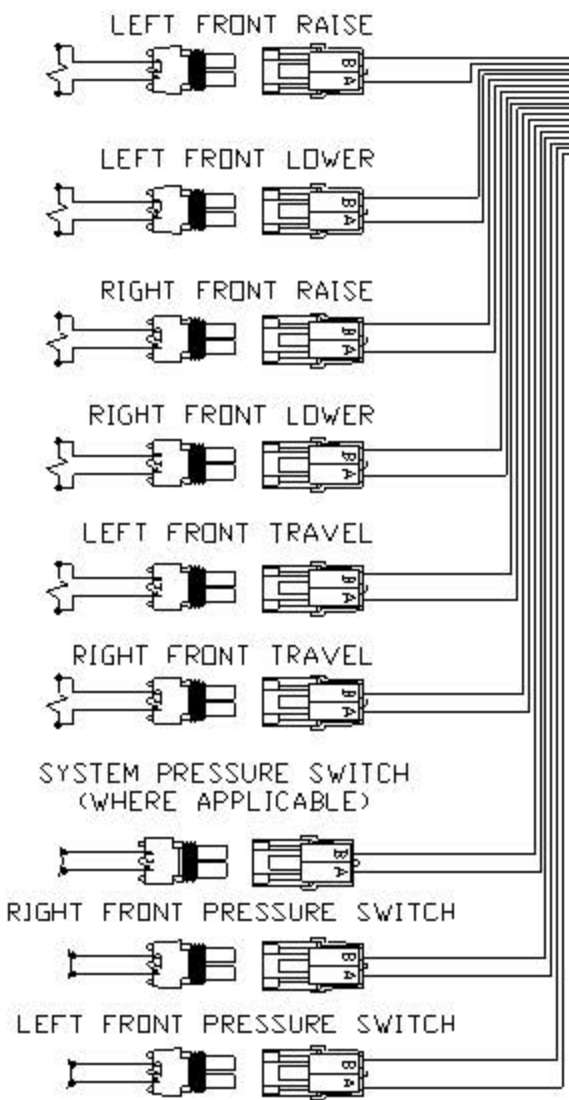
- 1 BLK(W8500) MASTER RELAY CNTRL
- 2 BLK(W8100) 3000 LB PSW.
- 3 BLK(W8101) 50 LB PSW
- 4 BLK(W8600) PMP RELAY CNTRL
- 5 BLK(W9900) SPEED SWITCH
- 6 BLK(W9901) SW BATT FROM PUMP RELAY
- 7 N/C
- 8 N/C

NOTE: WIRE NUMBERS ON THIS SHEET ARE REFERENCED TO HARNESS PLUGS.

NOTE: INSTALLATION MUST CONFORM TO GOOD SHOP PRACTICES, SAE STANDARDS, RVIA STANDARDS, AND OTHER APPLICABLE STANDARDS.

MP89566 B  
25OCT07

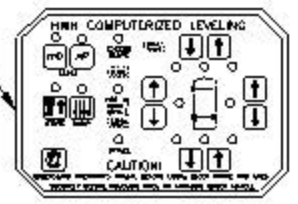
AP25285 (PRE-WIRED ON MANIFOLD ASSEMBLY)



FRONT AIR MANIFOLD CONNECTIONS

- PIN
1. RIGHT FRONT TRAVEL
  2. GROUND
  3. RIGHT FRONT PRESS. SW.
  4. GROUND
  5. RIGHT FRONT RAISE
  6. GROUND
  7. RIGHT FRONT LOWER
  8. GROUND
  9. LEFT FRONT RAISE
  10. GROUND
  11. LEFT FRONT LOWER
  12. GROUND
  13. LEFT FRONT TRAVEL
  14. GROUND
  15. LEFT FRONT PRESS. SW.
  16. GROUND
  17. SYSTEM PRESS. SW.
  18. GROUND
  - 19.-31. N/C

AP36714

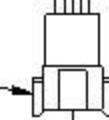


- PIN
- 1 YELLOW CAN HI
  - 2 GREEN CAN LOW
  - 3 CAN SHIELD
  - 4 WHT(W6230) GROUND
  - 5 RED(W6800) SW. BATTERY



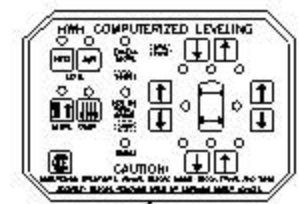
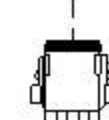
AP34145

- PIN
- 1 N/C
  - 2 N/C
  - 3 RED(W6800) SW. BATTERY
  - 4 WHT(W6230) GROUND
  - 5 CAN SHIELD
  - 6 N/C
  - 7 GRN CAN LOW
  - 8 YEL CAN HI



PIN

- 1 N/C
- 2 N/C
- 3 RED(W6800) SW. BATTERY
- 4 WHT(W6230) GROUND
- 5 CAN SHIELD
- 6 RED(W6110) IGNITION
- 7 GRN CAN LOW
- 8 YEL CAN HI



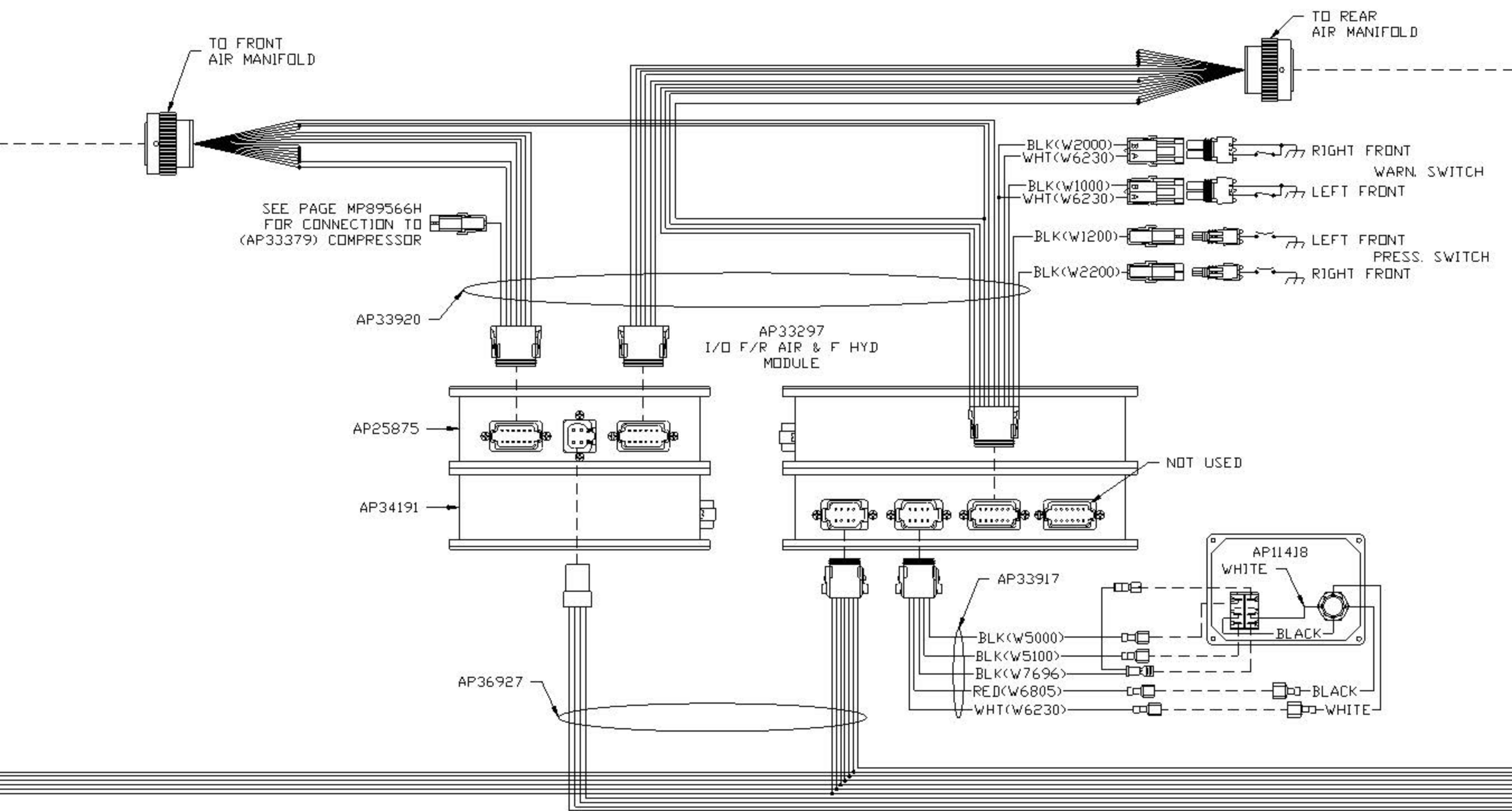
AP36716

- PIN
- 1 YELLOW CAN HI
  - 2 GREEN CAN LOW
  - 3 CAN SHIELD
  - 4 WHT(W6230) GROUND
  - 5 RED(W6800) SW. BATTERY

AP36927

NOTE: INSTALLATION MUST CONFORM TO GOOD SHOP PRACTICES, SAE STANDARDS, RVIA STANDARDS, AND OTHER APPLICABLE STANDARDS.

MP89566\_C  
25OCT07



- PIN
1. RIGHT REAR TRAVEL
  2. GROUND
  3. RIGHT REAR PRESS. SW.
  4. GROUND
  5. RIGHT REAR RAISE
  6. GROUND
  7. RIGHT REAR LOWER
  8. GROUND
  9. LEFT REAR RAISE
  10. GROUND
  11. LEFT REAR LOWER
  12. GROUND
  13. LEFT REAR TRAVEL
  14. GROUND
  15. LEFT REAR PRESS. SW.
  16. GROUND
  17. SYSTEM PRESS. SW.
  18. GROUND
  - 19.-31. N/C

REAR AIR  
MANIFOLD  
CONNECTIONS

AP25285 (PRE-WIRED  
ON MANIFOLD ASSEMBLY)

LEFT REAR RAISE

LEFT REAR LOWER

RIGHT REAR RAISE

RIGHT REAR LOWER

LEFT REAR TRAVEL

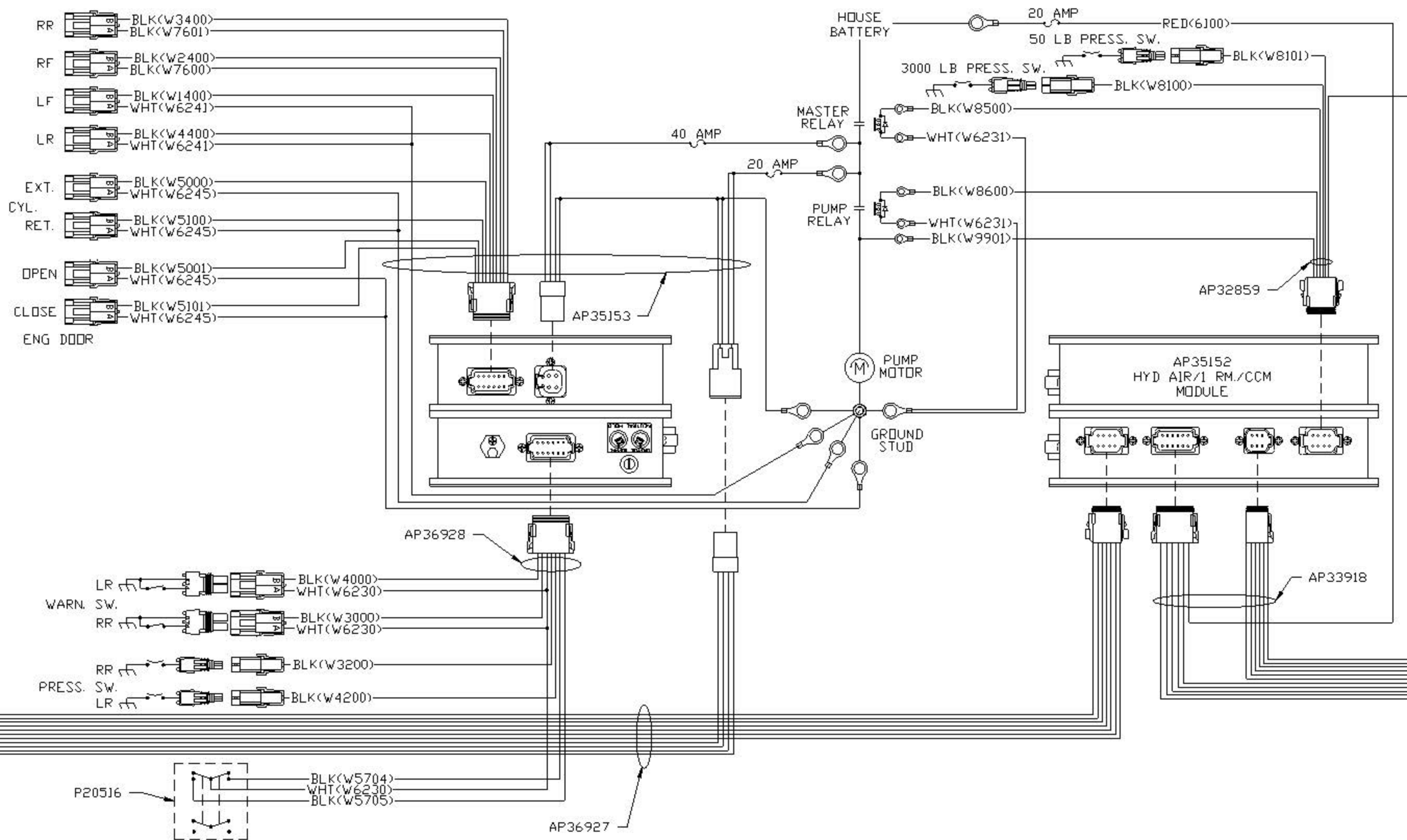
RIGHT REAR TRAVEL

SYSTEM PRESSURE SWITCH  
(WHERE APPLICABLE)

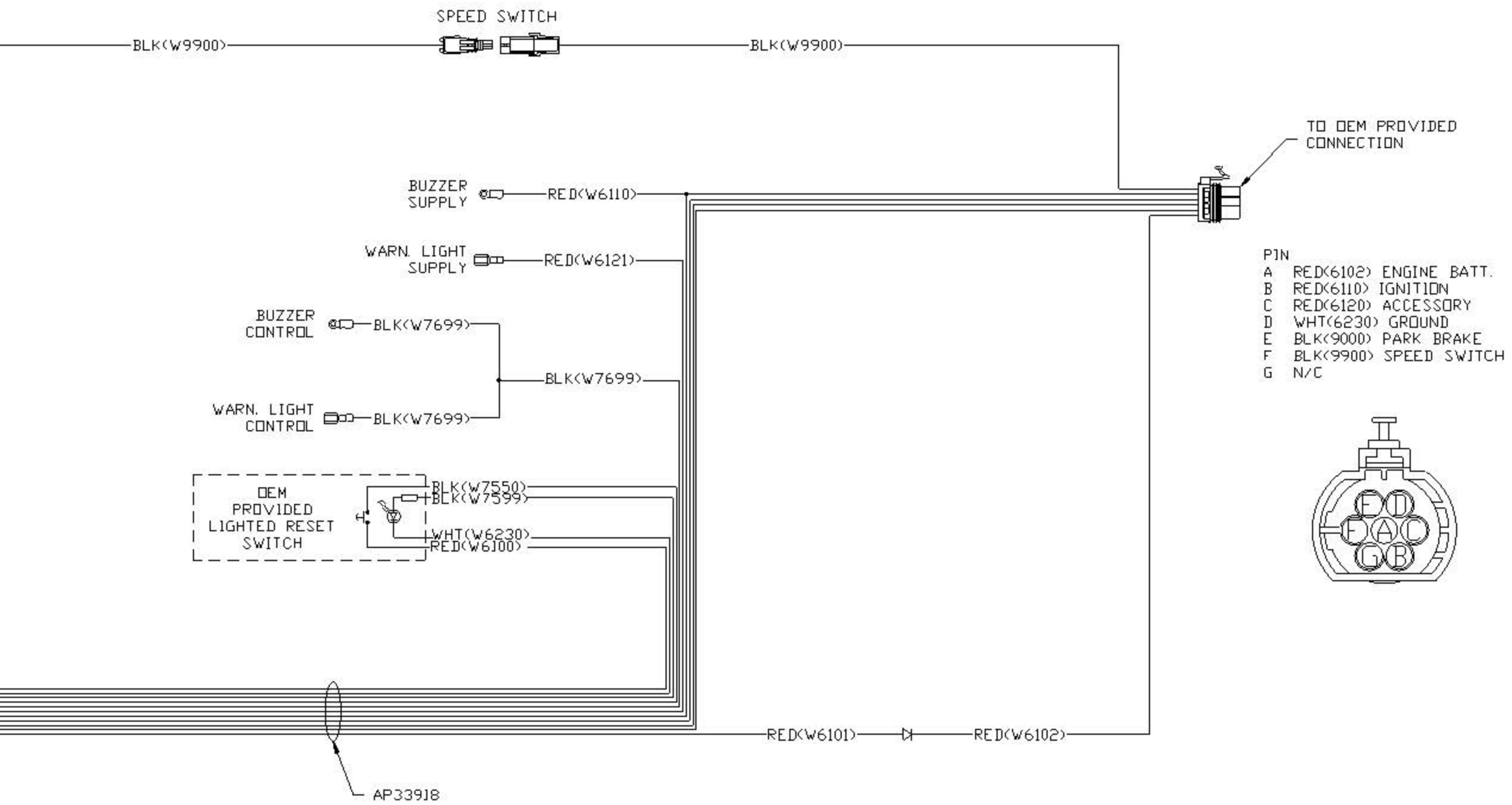
RIGHT REAR PRESSURE SWITCH

LEFT REAR PRESSURE SWITCH

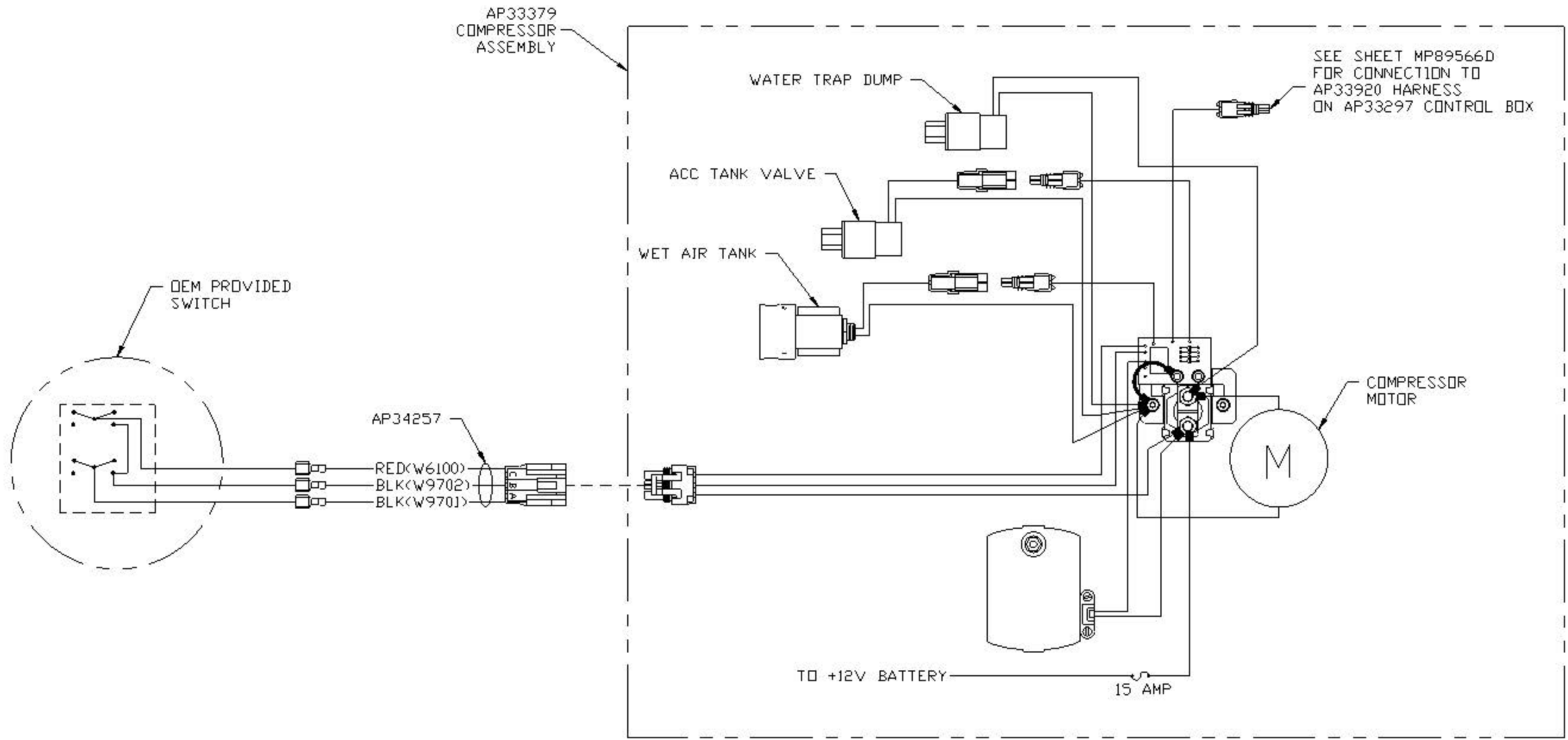
AP36927



NOTE: INSTALLATION MUST CONFORM TO GOOD SHOP PRACTICES, SAE STANDARDS, RVIA STANDARDS, AND OTHER APPLICABLE STANDARDS.

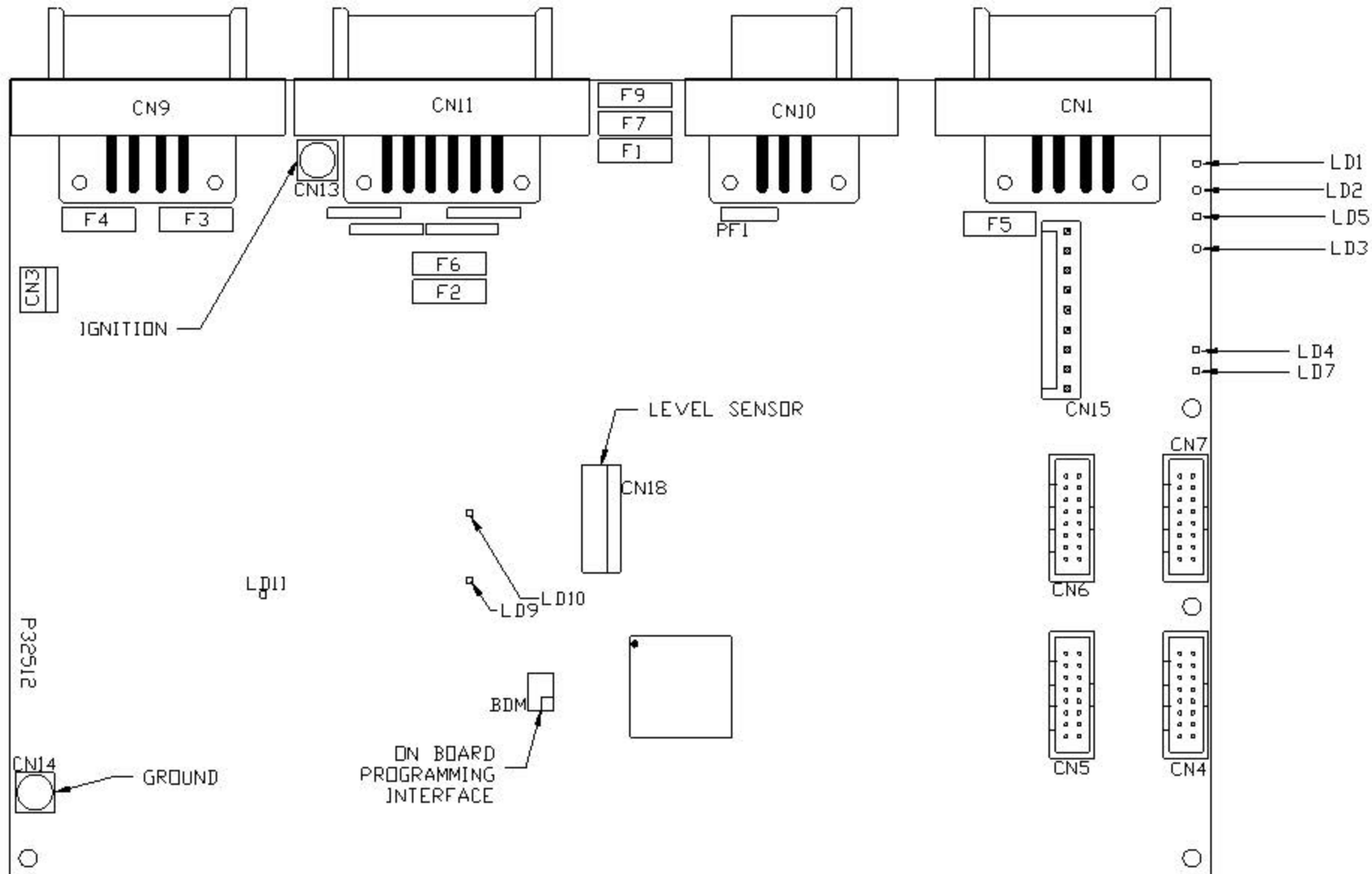


NOTE: INSTALLATION MUST CONFORM TO GOOD SHOP PRACTICES, SAE STANDARDS, RVIA STANDARDS, AND OTHER APPLICABLE STANDARDS.



NOTE: INSTALLATION MUST CONFORM TO GOOD SHOP PRACTICES, SAE STANDARDS, RVIA STANDARDS, AND OTHER APPLICABLE STANDARDS.





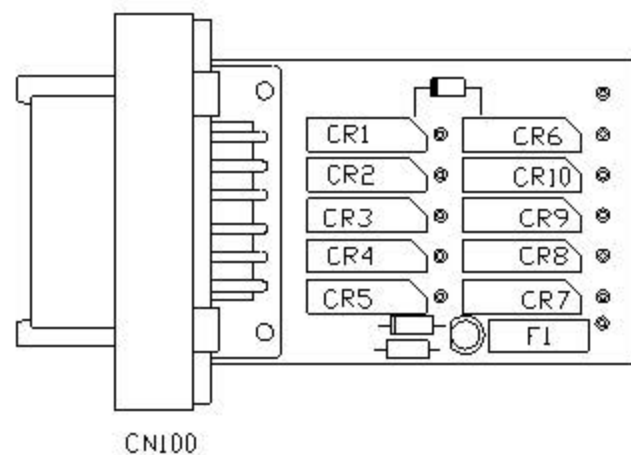
CENTRAL  
CONTROL MODULE  
LED LAYOUT

LED #	CONNECTOR	COLOR	DESCRIPTION
LED 1	CN 9 PIN 1	RED	MASTER RELAY
LED 2	CN 9 PIN 4	RED	PUMP RELAY
LED 3	CN 1 PIN 3	RED	SW 12V
LED 4	CN 11 PIN 12	RED	ENGINE BATT
LED 5	CN 9 PIN 5	RED	SPEED SWITCH
LED 7	CN 1 PIN 7 & 8	RED	LINK LIGHT
LED 8	NOT USED	RED	NOT USED
LED 9	CN 9 PIN 3	RED	50 LBS. PSW
LED 10	CN 9 PIN 2	RED	3000 LBS. PSW
LED 11	CN 11 PIN 11	RED	PARK BRAKE

FUSE #	DESCRIPTION
PF1	RESET OUT
F7	ACCESSORY
F1	IGNITION
F2	HOUSE BATTERY
F3	MASTER RELAY
F4	PUMP RELAY
F5	SW. BATT TO CAN MODULES
F6	ENGINE BATTERY
F9	POWER TO CN100

NOTE: INSTALLATION MUST CONFORM TO GOOD SHOP PRACTICES, SAE STANDARDS, RV1A STANDARDS, AND OTHER APPLICABLE STANDARDS.

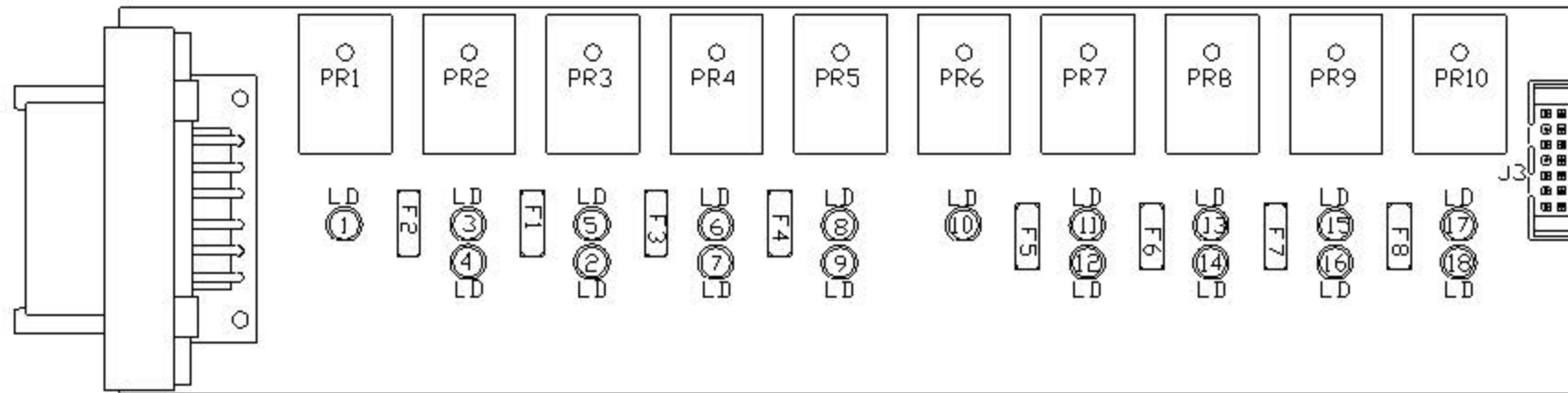
MP89566 I  
25OCT07



REAR  
HYDRAULIC PSW/  
WARNING SWITCHES

CONNECTOR	REED SWITCH	DESCRIPTION
CN 100 PIN 1	CR1	ENGINE DOOR OPEN
CN 100 PIN 2	---	NOT USED
CN 100 PIN 3	---	NOT USED
CN 100 PIN 4	CR4	RR WARNING
CN 100 PIN 5	CR5	LR WARNING
CN 100 PIN 6	CR6	GROUND

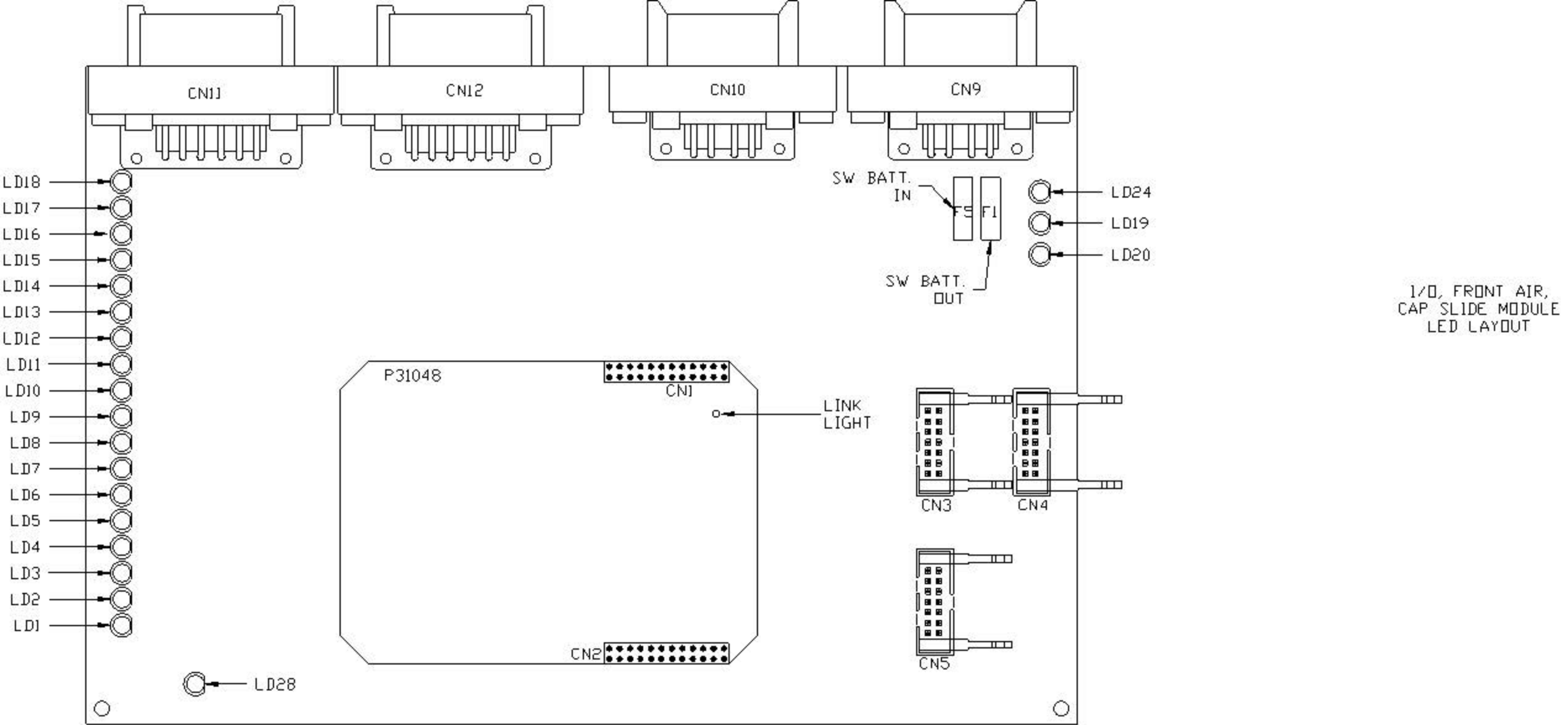
CONNECTOR	REED SWITCH	DESCRIPTION
CN 100 PIN 7	---	NOT USED
CN 100 PIN 8	---	NOT USED
CN 100 PIN 9	CR9	HYD RR PSW
CN 100 PIN 10	CR10	HYD LR PSW
CN 100 PIN 11	---	NOT USED
CN 100 PIN 12	CR12	ENGINE DOOR CLOSE



LEVELING  
LED LAYOUT

LED #	COLOR	INPUT J3	FUSE #	OUTPUT	RELAY #	DESCRIPTION
LED1	YELLOW	PIN 13	---	PIN 1	PR1	CRX1 (COIL)
LED2	RED	PIN 11	F1	PIN 3	PR3	RF JACK (CONTACT)
LED3	YELLOW	PIN 12	---	---	PR2	LF JACK (COIL)
LED4	RED	---	F2	PIN 2	PR2	LF JACK (CONTACT)
LED5	YELLOW	PIN 11	---	---	PR3	RF JACK (COIL)
LED6	YELLOW	PIN 10	---	---	PR4	GEN. EXT. (COIL)
LED7	RED	---	F3	PIN 4	PR4	GEN. EXT. (CONTACT)
LED8	YELLOW	PIN 9	---	---	PR5	RR JACK (COIL)
LED9	RED	---	F4	PIN 5	PR5	RR JACK (CONTACT)
LED10	YELLOW	PIN 8	---	PIN 6	PR6	CRX2 (COIL)
LED11	YELLOW	PIN 7	---	---	PR7	LR JACK (COIL)
LED12	RED	---	F5	PIN 7	PR7	LR JACK (CONTACT)
LED13	YELLOW	---	---	---	PR8	ENG. DOOR OPEN (COIL)
LED14	RED	---	F6	PIN 10	PR8	ENG. DOOR OPEN (CONTACT)
LED15	YELLOW	---	---	---	PR9	ENG. DOOR CLOSED (COIL)
LED16	RED	---	F7	PIN 8	PR9	ENG. DOOR CLOSED (CONTACT)
LED17	YELLOW	PIN 4	---	---	PR10	GEN. RET. (COIL)
LED18	RED	---	F8	PIN 11	PR10	GEN. RET. (CONTACT)



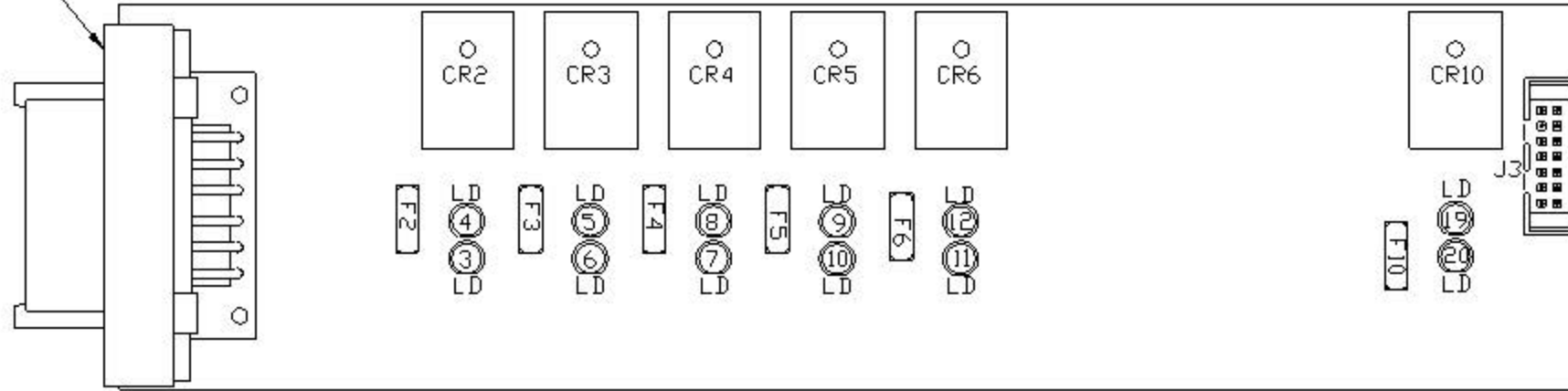


LED #	CONNECTOR	COLOR	DESCRIPTION
LED 1	CN 10 PIN 4	RED	EXTEND
LED 2	CN 10 PIN 5	RED	RETRACT
LED 3	CN 12 PIN 8	GREEN	LF JACK WARN SW
LED 4	CN 12 PIN 5	YELLOW	LR AIR PSW
LED 5	NOT USED	YELLOW	NOT USED
LED 6	CN 12 PIN 2	YELLOW	LF AIR PSW
LED 7	NOT USED	GREEN	NOT USED
LED 8	CN 12 PIN 3	GREEN	RF AIR PSW

LED #	CONNECTOR	COLOR	DESCRIPTION
LED 9	NOT USED	GREEN	NOT USED
LED 10	CN 12 PIN 10	GREEN	RF JACK WARN SW
LED 11	NOT USED	YELLOW	NOT USED
LED 12	CN 12 PIN 1	YELLOW	SYSTEM PSW
LED 13	NOT USED	YELLOW	NOT USED
LED 14	NOT USED	YELLOW	NOT USED
LED 15	NOT USED	GREEN	NOT USED
LED 16	CN 12 PIN 4	GREEN	RR AIR PSW
LED 17	NOT USED	GREEN	NOT USED
LED 18	CN 12 PIN 9	GREEN	LF JACK PSW
LED 19	CN11/CN12 PIN 7	RED	SW BATT OUT
LED 20	CN9 PIN 3	RED	SW BATT IN
LED 24	CN 10 PIN 7	RED	SYSTEM WAKE UP
LED 28	CN 12 PIN 11	RED	RF JACK PSW

NOTE: INSTALLATION MUST CONFORM TO GOOD SHOP PRACTICES, SAE STANDARDS, RV1A STANDARDS, AND OTHER APPLICABLE STANDARDS.

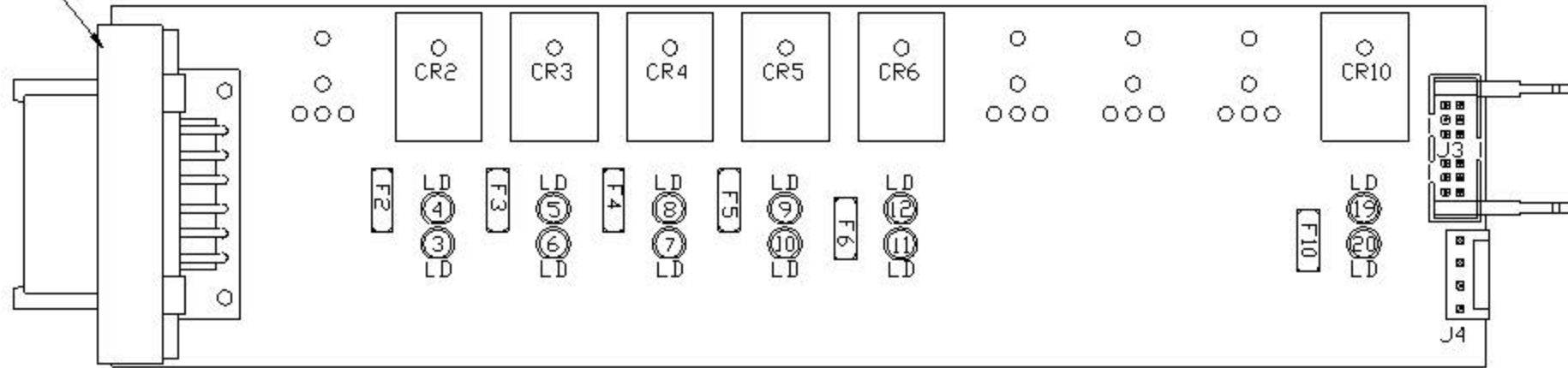
T571221(BLK)



REAR AIR  
LED LAYOUT

LED #	COLOR	INPUT J3	FUSE #	OUTPUT	RELAY #	DESCRIPTION
LED3	RED	---	FUSE 2	PIN 2	CR2	LEFT REAR RAISE <CONTACT>
LED4	YELLOW	PIN 12	---	---	CR2	LEFT REAR RAISE <COIL>
LED5	YELLOW	PIN 11	---	---	CR3	LEFT REAR LOWER <COIL>
LED6	RED	---	FUSE 3	PIN 3	CR3	LEFT REAR LOWER <CONTACT>
LED7	RED	---	FUSE 4	PIN 4	CR4	RIGHT REAR RAISE <CONTACT>
LED8	YELLOW	PIN 10	---	---	CR4	RIGHT REAR RAISE <COIL>
LED9	YELLOW	PIN 9	---	---	CR5	RIGHT REAR LOWER <COIL>
LED10	RED	---	FUSE 5	PIN 5	CR5	RIGHT REAR LOWER <CONTACT>
LED11	RED	---	FUSE 6	PIN 6	CR6	NOT USED
LED12	YELLOW	PIN 8	---	---	CR6	NOT USED
LED19	YELLOW	PIN 4	---	---	CR10	TRAVEL <COIL>
LED20	RED	---	FUSE 10	PIN 8	CR10	TRAVEL <CONTACT>

T571224(BRN)



FRONT AIR  
LED LAYOUT

LED #	COLOR	INPUT J3	FUSE #	OUTPUT	RELAY #	DESCRIPTION
LED3	RED	---	FUSE 2	PIN 2	CR2	LEFT FRONT RAISE (CONTACT)
LED4	YELLOW	PIN 12	---	---	CR2	LEFT FRONT RAISE (COIL)
LED5	YELLOW	PIN 11	---	---	CR3	LEFT FRONT LOWER (COIL)
LED6	RED	---	FUSE 3	PIN 3	CR3	LEFT FRONT LOWER (CONTACT)
LED7	RED	---	FUSE 4	PIN 4	CR4	RIGHT FRONT RAISE (CONTACT)
LED8	YELLOW	PIN 10	---	---	CR4	RIGHT FRONT RAISE (COIL)
LED9	YELLOW	PIN 9	---	---	CR5	RIGHT FRONT LOWER (COIL)
LED10	RED	---	FUSE 5	PIN 5	CR5	RIGHT FRONT LOWER (CONTACT)
LED11	RED	---	FUSE 6	PIN 6	CR6	COMPRESSOR (CONTACT)
LED12	YELLOW	PIN 8	---	---	CR6	COMPRESSOR (COIL)
LED19	YELLOW	PIN 4	---	---	CR10	TRAVEL (COIL)
LED20	RED	---	FUSE 10	PIN 8	CR10	TRAVEL (CONTACT)