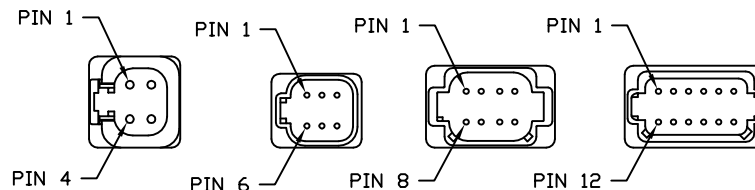


AP26586 (BROWN)

- PIN
 1 N/C
 2 BLK(W4500) LEFT REAR RAISE
 3 BLK(W4600) LEFT REAR LOWER
 4 BLK(W3500) RIGHT REAR RAISE
 5 BLK(W3600) RIGHT REAR LOWER
 6 N/C
 7 N/C
 8 BLK(W3700) REAR TRAVEL
 9 N/C
 10 N/C
 11 WHT(W6258) GROUND
 12 N/C

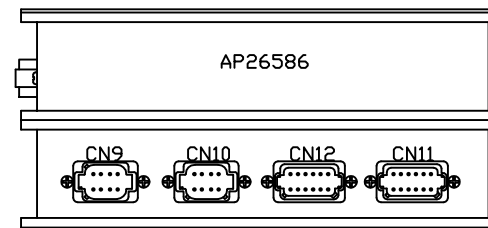
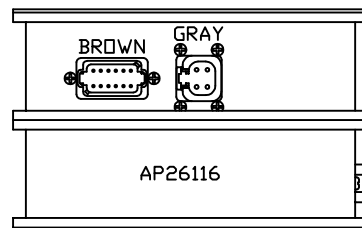
AP26586 (GRAY)

- PIN
 1 BLK(W6801) SW BATT
 2 BLK(W6801) SW BATT
 3 WHT(W6231) GROUND
 4 WHT(W6231) GROUND



NOTE: DEUTSCH PIN NUMBERS TYPICAL UNLESS OTHERWISE NOTED

AP33346
 REAR AIR/HYDRAULIC/
 PRESS. AND WARN. SWITCHES



AP26116 CN9(BLACK)

- PIN
 1 N/C
 2 N/C
 3 RED(W6800) SW BATTERY
 4 WHT(W6230) GROUND
 5 CAN SHIELD
 6 RED(W6110) IGNITION
 7 GRN CAN LOW
 8 YEL CAN HI

AP26116 CN10(GRAY)

- PIN
 1 N/C
 2 N/C
 3 N/C
 4 N/C
 5 N/C
 6 N/C
 7 N/C
 8 N/C

AP26116 CN12(GRAY)

- PIN
 1 N/C
 2 N/C
 3 BLK(W3215) AIR SYSTEM PRESS. SW.
 4 BLK(W4200) LEFT REAR JACK PRESS. SWITCH
 5 N/C
 6 WHT(W6231) GROUND
 7 N/C
 8 N/C
 9 BLK(W4000) LEFT REAR JACK WARN. SWITCH
 10 N/C
 11 N/C
 12 N/C

AP26116 CN11(GREEN)

- PIN
 1 N/C
 2 BLK(W4210) LEFT REAR AIR PRESS. SW.
 3 BLK(W3210) RIGHT REAR AIR PRESS. SW.
 4 BLK(W3200) RIGHT REAR JACK PRESS. SWITCH
 5 N/C
 6 WHT(W6232) GROUND
 7 N/C
 8 N/C
 9 BLK(W3000) RIGHT REAR JACK WARN. SWITCH
 10 N/C
 11 N/C
 12 N/C

NOTE: WIRE NUMBERS ON THIS SHEET ARE REFERENCED TO HARNESS PLUGS.

			HWH I-80 EXIT 267 SOUTH RT 1 MOSCOW, IOWA 52760		
3	11OCT07	ADDED INSTALLATION NOTE	SCALE 1:3	DATE 03JAN06	DRAWN BY .
	24APR07	CORRECTED PIN LABEL	SYSTEM SCHEMATIC ELEC		
	24APR07	CORRECTED PIN ASSIGN			
NO.	DATE	REVISION			
THE INFORMATION DISCLOSED ON THIS DRAWING IS CONFIDENTIAL AND MUST NOT BE DISCLOSED OR USED IN ANY MANNER WHICH WILL BE DETRIMENTAL TO THE HWH CORPORATION			DRAWING NUMBER MP89599 A/M		

NOTE: INSTALLATION MUST CONFORM TO GOOD SHOP PRACTICES, SAE STANDARDS, RVIA STANDARDS, AND OTHER APPLICABLE STANDARDS.

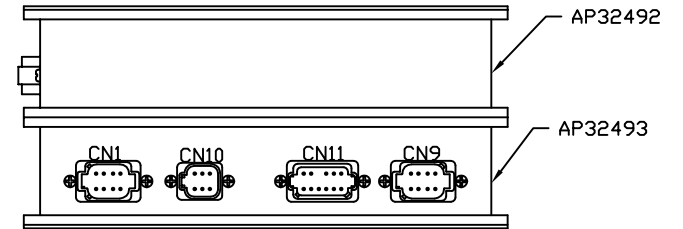
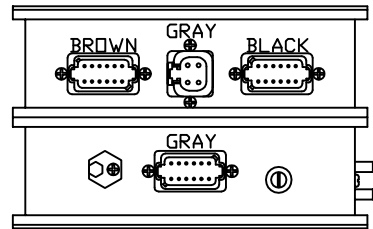
AP32492 (BLACK)
PIN
1 BLK(W7600) CRX1
2 BLK(W1400) LEFT FRONT JACK
3 BLK(W2400) RIGHT FRONT JACK
4 BLK(W5000) CYLINDER EXTEND
5 BLK(W3400) RIGHT REAR JACK
6 BLK(W7601) CRX2
7 BLK(W4400) LEFT REAR JACK
8 N/C
9 N/C
10 N/C
11 BLK(W5100) CYLINDER RETRACT
12 N/C

AP32492 (GRAY)
PIN
1 BLK(W6800) SW BATT
2 BLK(W6800) SW BATT
3 WHT(W6230) GROUND
4 WHT(W6230) GROUND

AP32492 (BROWN)
PIN
1 N/C
2 BLK(W1500) LEFT FRONT RAISE
3 BLK(W1600) LEFT FRONT LOWER
4 BLK(W2500) RIGHT FRONT RAISE
5 BLK(W2600) RIGHT FRONT LOWER
6 BLK(W9700) COMPRESSOR CONTROL
7 N/C
8 BLK(W1700) TRAVEL
9 N/C
10 N/C
11 WHT(6254) GROUND
12 N/C

AP33689
CCM/HYD AIR/1 RM.

AP32493 (GRAY)
PIN
1 BLK(W5000) CYLINDER EXTEND
2 BLK(W1210) LEFT FRONT AIR PRESS. SWITCH
3 BLK(W2210) RIGHT FRONT AIR PRESS. SWITCH
4 BLK(W2000) RIGHT FRONT JACK WARN. SWITCH
5 BLK(W1000) LEFT FRONT JACK WARN. SWITCH
6 WHT(W6230) GROUND
7 N/C
8 N/C
9 BLK(W2200) RIGHT FRONT JACK PRESS. SWITCH
10 BLK(W1200) LEFT FRONT JACK PRESS. SWITCH
11 N/C
12 BLK(W5100) CYLINDER RETRACT



AP32493 CN1 (BLACK)
PIN
1 N/C
2 N/C
3 RED(W6800) SWITCHED BATTERY
4 WHT(W6230) GROUND
5 CAN SHIELD
6 RED(W6110) IGNITION
7 GRN CAN LOW
8 YEL CAN HI

AP32493 CN10 (GRAY)
PIN
1 BLK(W7599) SWITCH LIGHT CONTROL
2 RED(W6100) RESET OUT
3 BLK(W7550) RESET IN
4 RED(W6121) WARN LIGHT SUPPLY
5 WHT(W6230) SWITCH LIGHT SUPPLY
6 BLK(W7699) WARN LIGHT/BUZZER CONTROL

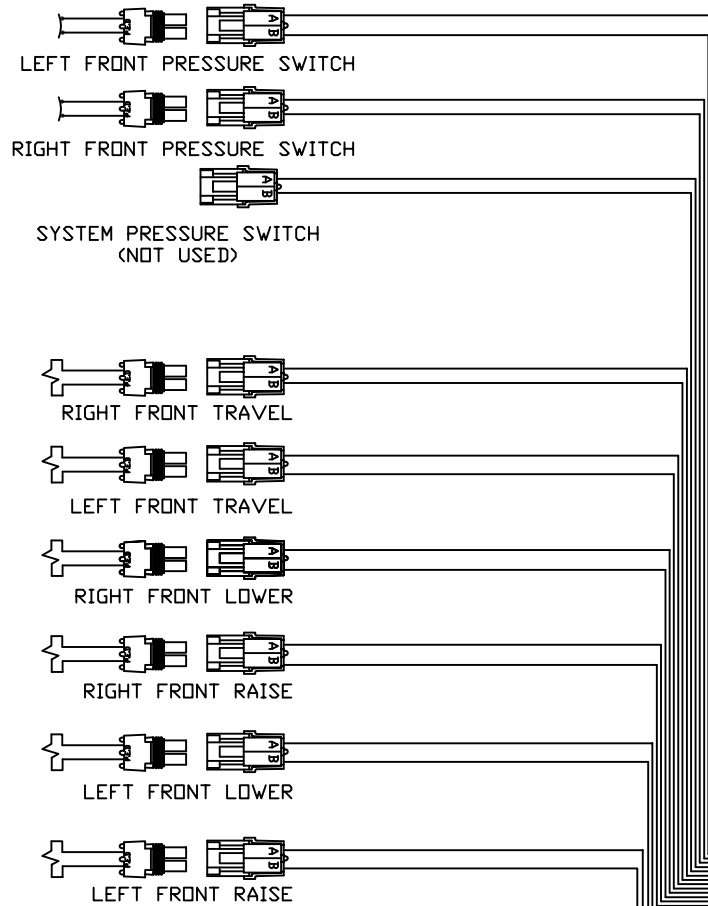
AP32493 CN11 (GRAY)
PIN
1 RED(W6110) IGNITION
2 N/C
3 N/C
4 N/C
5 RED(W6120) ACCESSORY
6 RED(W6100) COACH BATTERY
7 WHT(W6230) GROUND
8 N/C
9 N/C
10 N/C
11 BLK(W9000) PARK BRAKE SWITCH
12 RED(W6101) ENGINE BATTERY

AP32493 CN9 (GREEN)
PIN
1 BLK(W8500) MASTER RELAY CNTRL
2 BLK(W8100) 3000 LB PSW.
3 BLK(W8101) 50 LB PSW
4 BLK(W8600) PMP RELAY CNTRL
5 BLK(W9900) SPEED SWITCH
6 BLK(W9901) SW BATT FROM PUMP RELAY
7 N/C
8 N/C

NOTE: WIRE NUMBERS ON THIS SHEET ARE REFERENCED TO HARNESS PLUGS.

NOTE: INSTALLATION MUST CONFORM TO GOOD SHOP PRACTICES, SAE STANDARDS, RVIA STANDARDS, AND OTHER APPLICABLE STANDARDS.

MP89599 B
11QCT07



- PIN
1. RIGHT FRONT TRAVEL
 2. GROUND
 3. RIGHT FRONT PRESS. SW.
 4. GROUND
 5. RIGHT FRONT RAISE
 6. GROUND
 7. RIGHT FRONT LOWER
 8. GROUND
 9. LEFT FRONT RAISE
 10. GROUND
 11. LEFT FRONT LOWER
 12. GROUND
 13. LEFT FRONT TRAVEL
 14. GROUND
 15. LEFT FRONT PRESS. SW.
 16. GROUND
 17. SYSTEM PRESS. SW.
 18. GROUND
 - 19-31 N/C

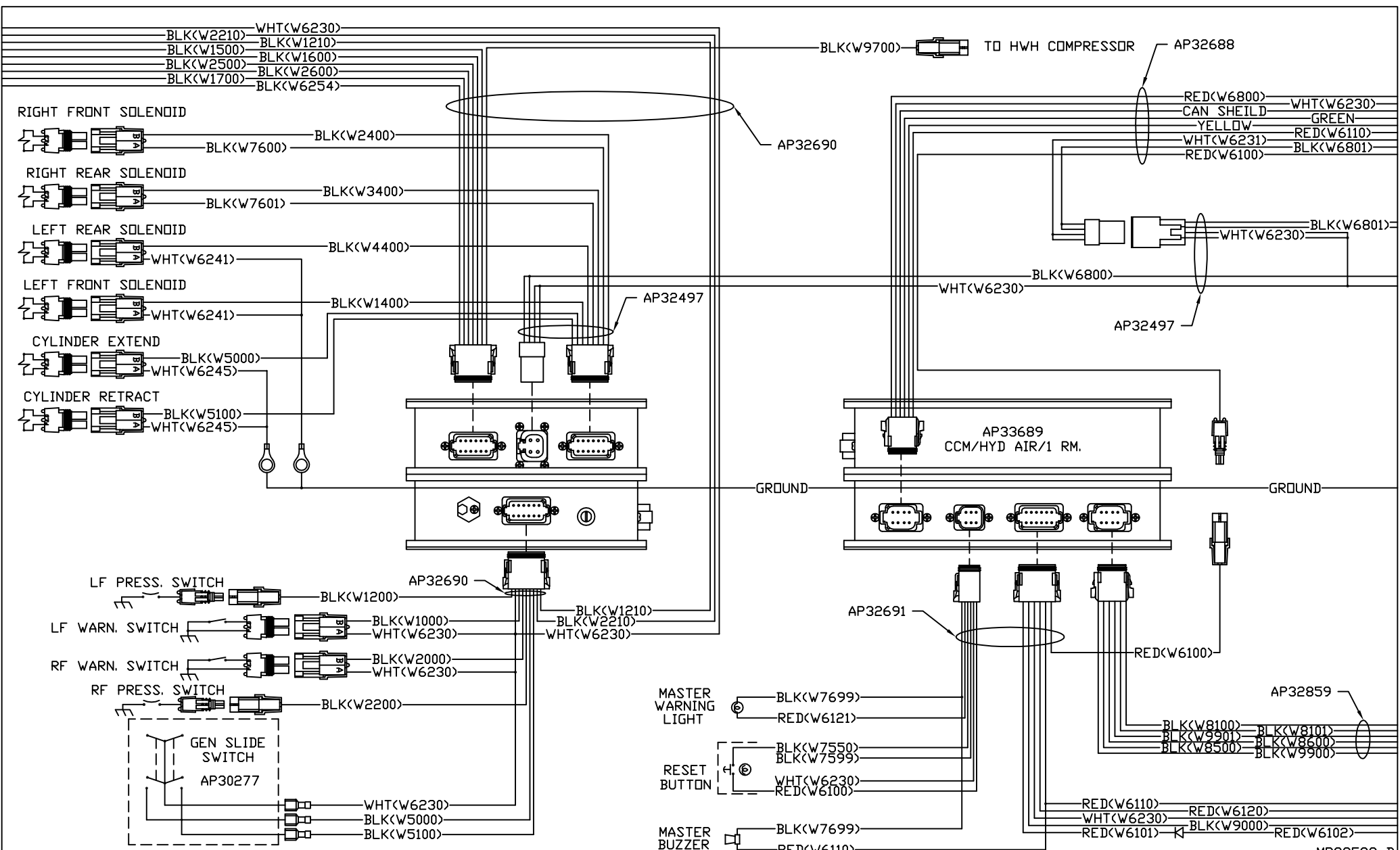
FRONT AIR
MANIFOLD
CONNECTIONS

AP25285

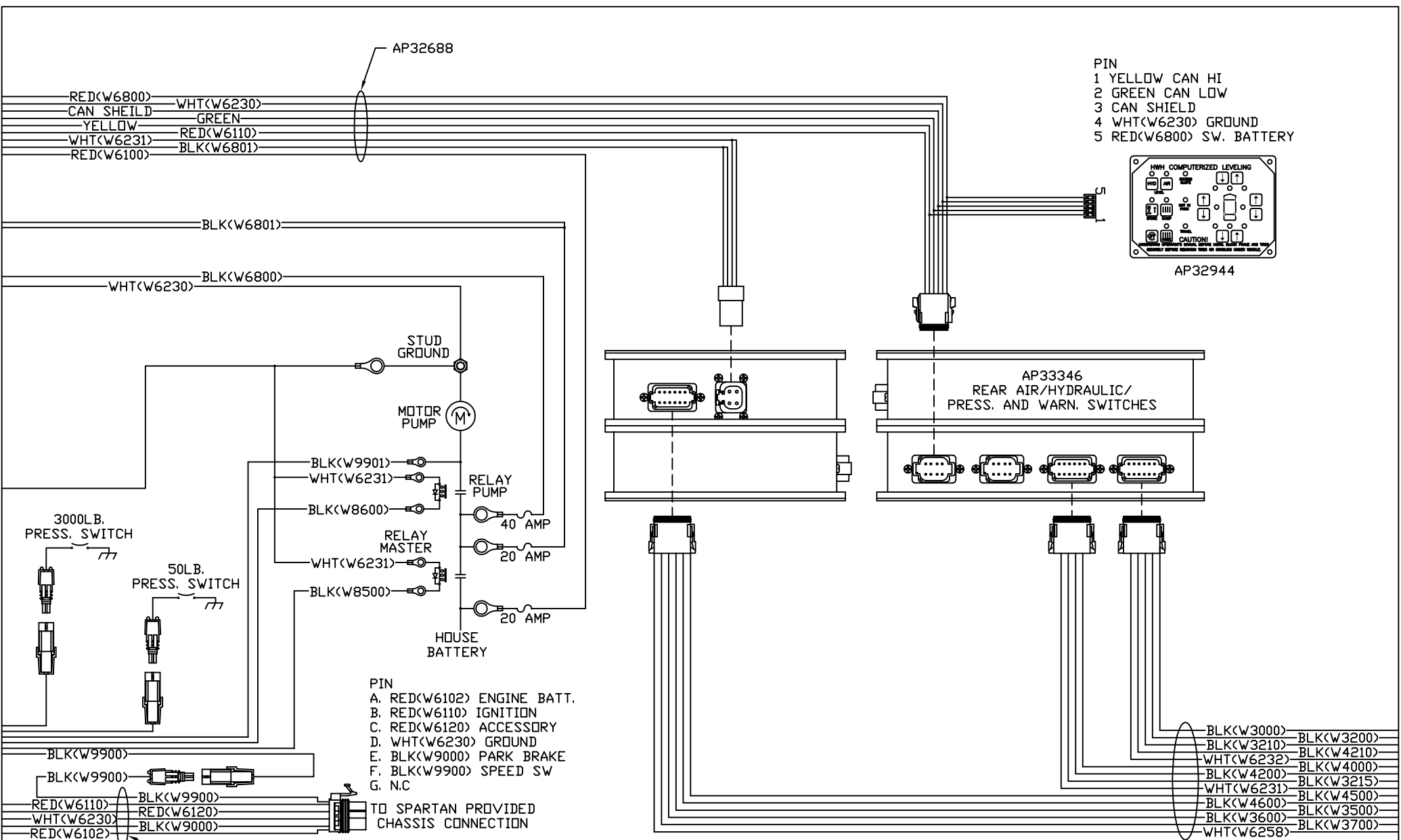
AP32690

- BLK(W2210) WHT(W6230)
- BLK(W1500) BLK(W1210)
- BLK(W2500) BLK(W1600)
- BLK(W1700) BLK(W2600)
- BLK(W6254)

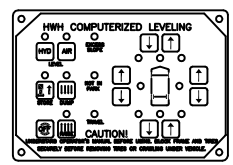
NOTE: INSTALLATION MUST CONFORM TO GOOD SHOP PRACTICES, SAE STANDARDS, RVIA STANDARDS, AND OTHER APPLICABLE STANDARDS.



NOTE: INSTALLATION MUST CONFORM TO GOOD SHOP PRACTICES, SAE STANDARDS, RVIA STANDARDS, AND OTHER APPLICABLE STANDARDS.



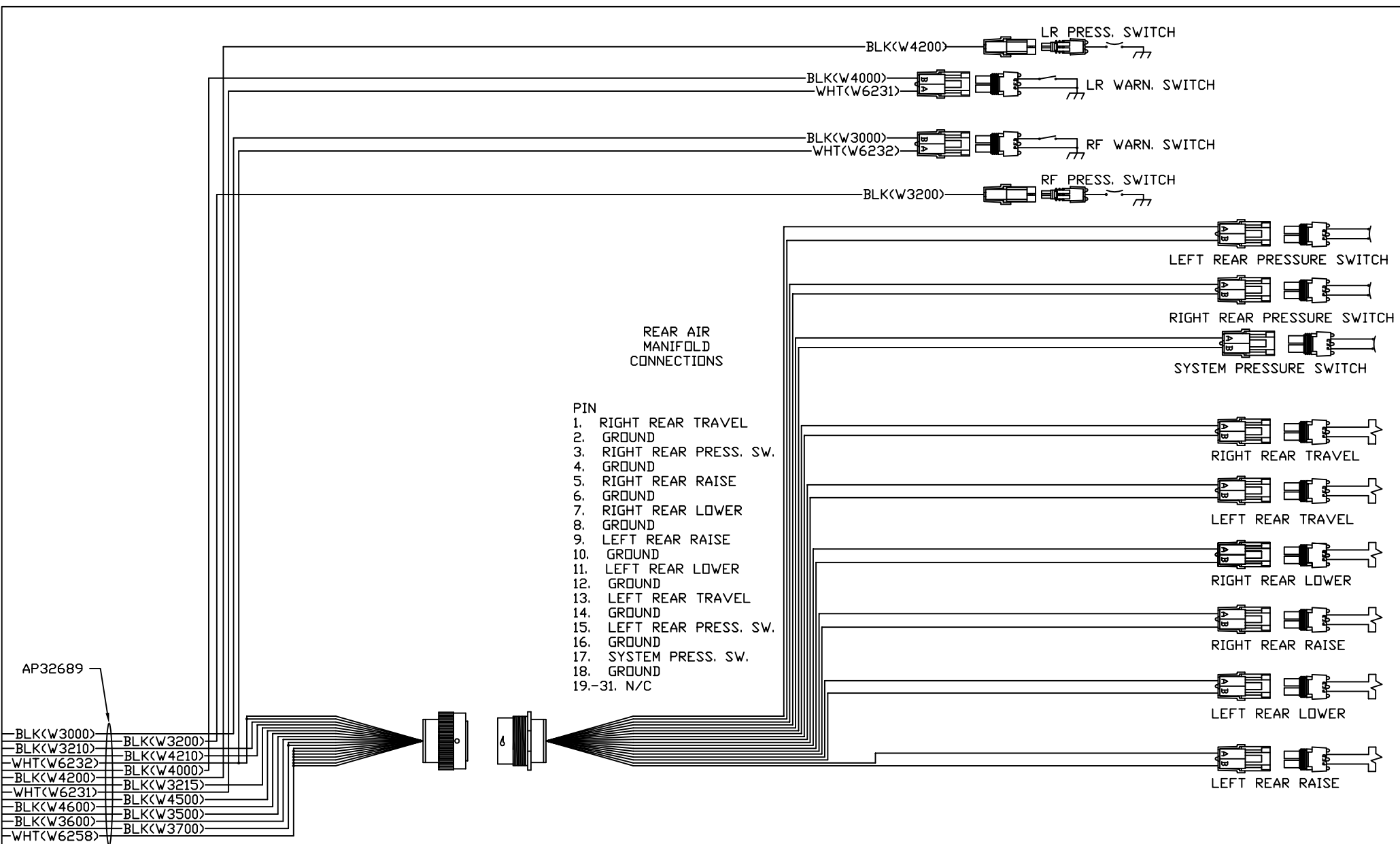
- PIN
- 1 YELLOW CAN HI
 - 2 GREEN CAN LOW
 - 3 CAN SHIELD
 - 4 WHT(W6230) GROUND
 - 5 RED(W6800) SW. BATTERY



- PIN
- A. RED(W6102) ENGINE BATT.
 - B. RED(W6110) IGNITION
 - C. RED(W6120) ACCESSORY
 - D. WHT(W6230) GROUND
 - E. BLK(W9000) PARK BRAKE
 - F. BLK(W9900) SPEED SW
 - G. N.C

- BLK(W3000)
- BLK(W3210)
- WHT(W6232)
- BLK(W4200)
- WHT(W6231)
- BLK(W4600)
- BLK(W3600)
- WHT(W6258)
- BLK(W3200)
- BLK(W4210)
- BLK(W4000)
- BLK(W3215)
- BLK(W4500)
- BLK(W3500)
- BLK(W3700)

NOTE: INSTALLATION MUST CONFORM TO GOOD SHOP PRACTICES, SAE STANDARDS, RVIA STANDARDS, AND OTHER APPLICABLE STANDARDS.



REAR AIR
MANIFOLD
CONNECTIONS

- PIN
1. RIGHT REAR TRAVEL
 2. GROUND
 3. RIGHT REAR PRESS. SW.
 4. GROUND
 5. RIGHT REAR RAISE
 6. GROUND
 7. RIGHT REAR LOWER
 8. GROUND
 9. LEFT REAR RAISE
 10. GROUND
 11. LEFT REAR LOWER
 12. GROUND
 13. LEFT REAR TRAVEL
 14. GROUND
 15. LEFT REAR PRESS. SW.
 16. GROUND
 17. SYSTEM PRESS. SW.
 18. GROUND
 - 19.-31. N/C

AP32689

- BLK(W3000)
- BLK(W3210)
- WHT(W6232)
- BLK(W4200)
- WHT(W6231)
- BLK(W4600)
- BLK(W3600)
- WHT(W6258)
- BLK(W3200)
- BLK(W4210)
- BLK(W4000)
- BLK(W3215)
- BLK(W4500)
- BLK(W3500)
- BLK(W3700)

NOTE: INSTALLATION MUST CONFORM TO GOOD SHOP PRACTICES, SAE STANDARDS, RVIA STANDARDS, AND OTHER APPLICABLE STANDARDS.

MP89599 F
11OCT07

AP33379
COMPRESSOR
ASSEMBLY

WATER TRAP DUMP

SEE SHEET MP89599 D
FOR CONNECTION TO
AP32690 HARNESS
ON AP33689 CONTROL BOX

ACC TANK VALVE

WET AIR TANK

DEM PROVIDED
SWITCH

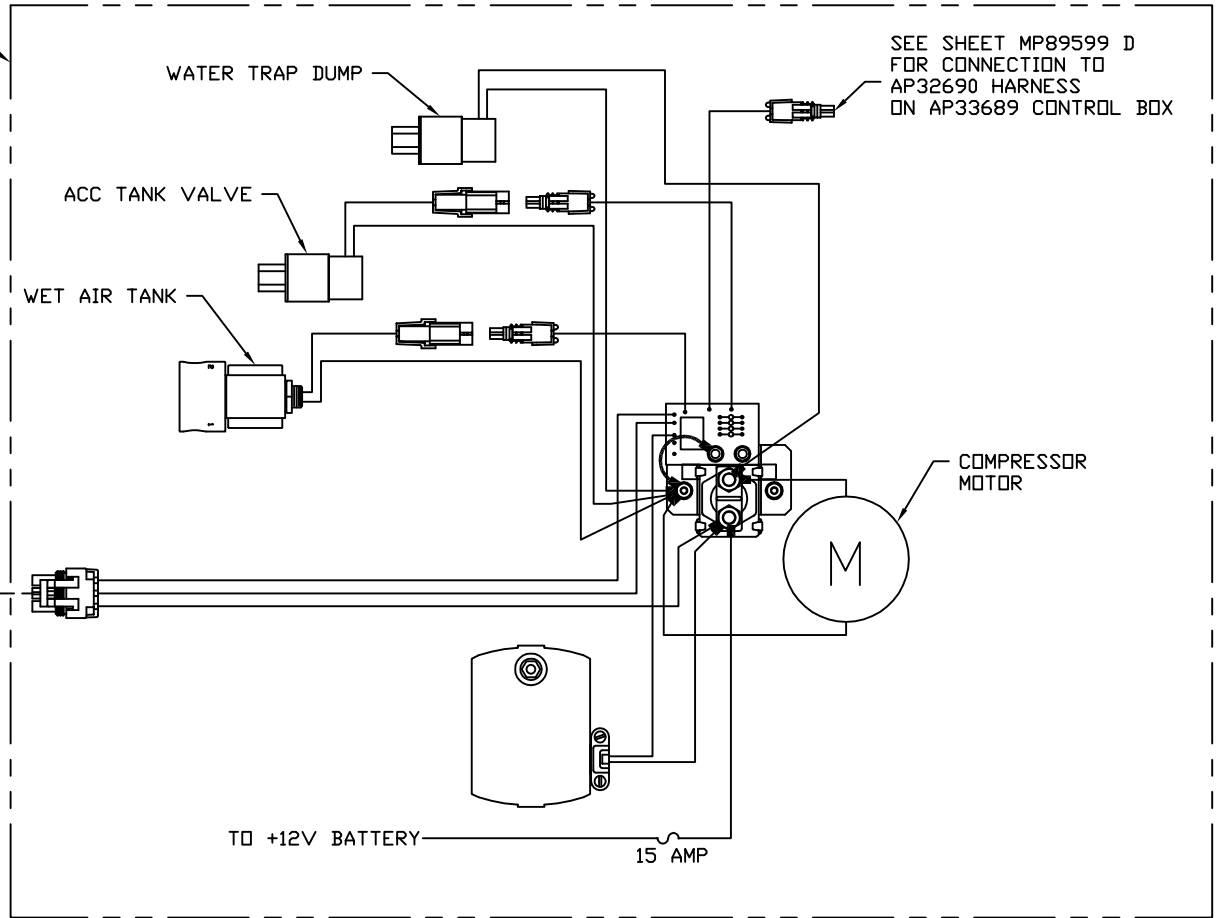
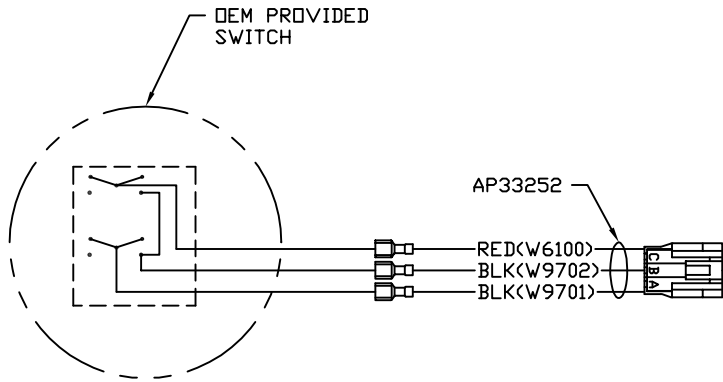
AP33252

RED<W6100>
BLK<W9702>
BLK<W9701>

COMPRESSOR
MOTOR

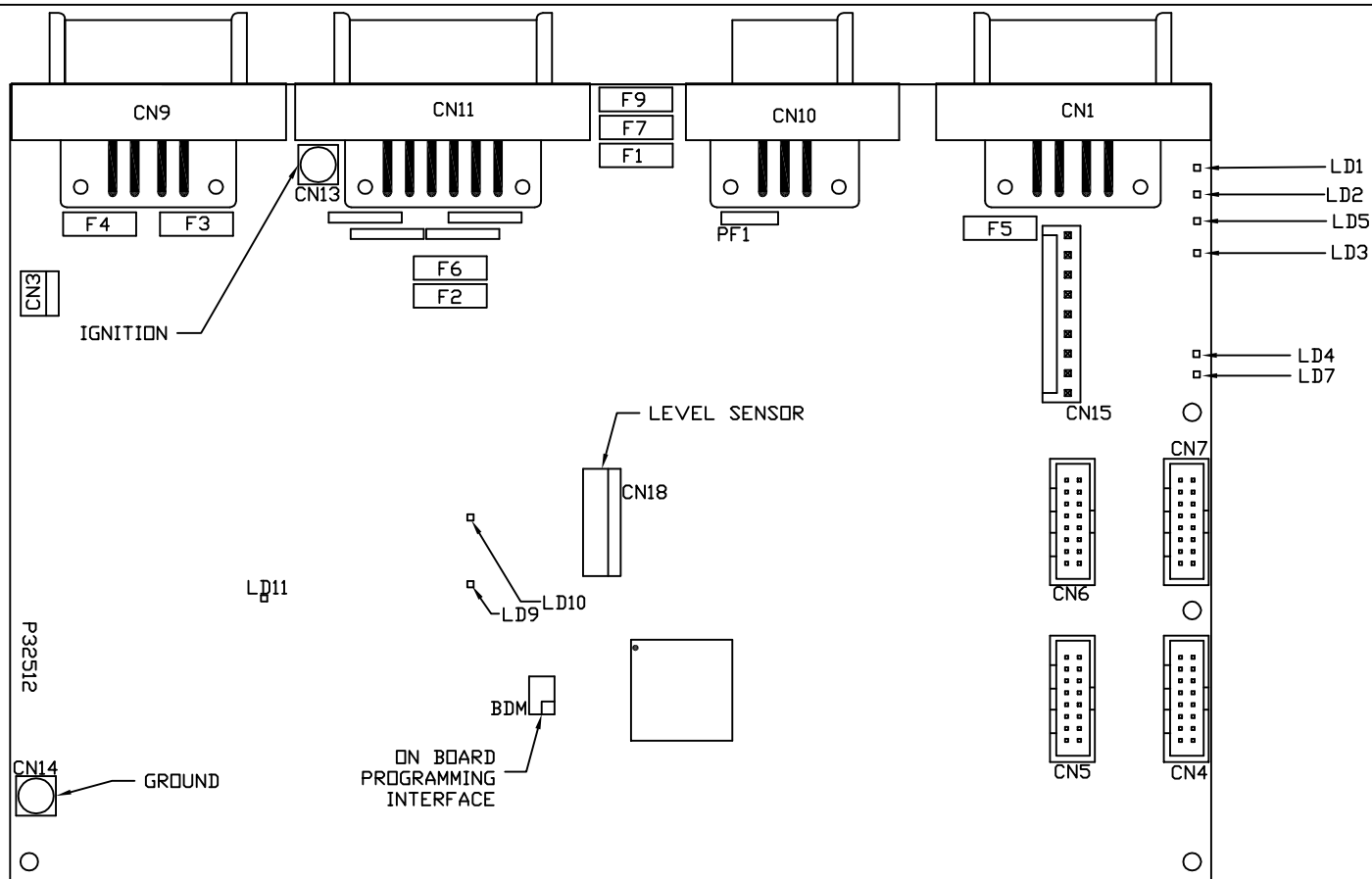
TO +12V BATTERY

15 AMP



NOTE: INSTALLATION MUST CONFORM TO GOOD SHOP PRACTICES, SAE STANDARDS, RVIA STANDARDS, AND OTHER APPLICABLE STANDARDS.

MP89599 G
11OCT07

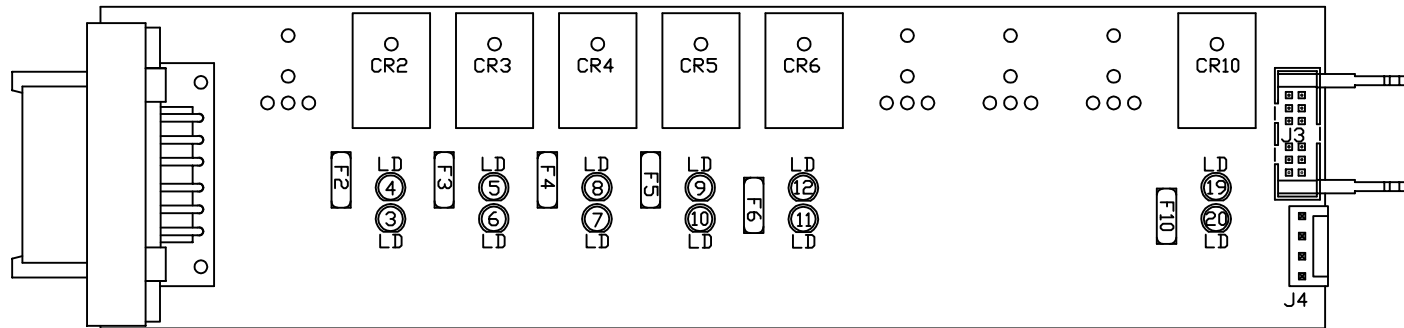


CENTRAL
CONTROL MODULE
LED LAYOUT

LED #	CONNECTOR	COLOR	DESCRIPTION
LED 1	CN 9 PIN 1	RED	MASTER RELAY
LED 2	CN 9 PIN 4	RED	PUMP RELAY
LED 3	CN 1 PIN 3	RED	SW 12V
LED 4	CN 11 PIN 12	RED	ENGINE BATT
LED 5	CN 9 PIN 5	RED	SPEED SWITCH
LED 7	CN 1 PIN 7 & 8	RED	LINK LIGHT
LED 8	NOT USED	RED	NOT USED
LED 9	CN 9 PIN 3	RED	50 LBS. PSW
LED 10	CN 9 PIN 2	RED	3000 LBS. PSW
LED 11	CN 11 PIN 11	RED	PARK BRAKE

FUSE #	DESCRIPTION
PF1	RESET OUT
F7	ACCESSORY
F1	IGNITION
F2	HOUSE BATTERY
F3	MASTER RELAY
F4	PUMP RELAY
F5	SW. BATT TO CAN MODULES
F6	ENGINE BATTERY
F9	POWER TO CN100

NOTE: INSTALLATION MUST CONFORM TO GOOD SHOP PRACTICES, SAE STANDARDS, RVIA STANDARDS, AND OTHER APPLICABLE STANDARDS.

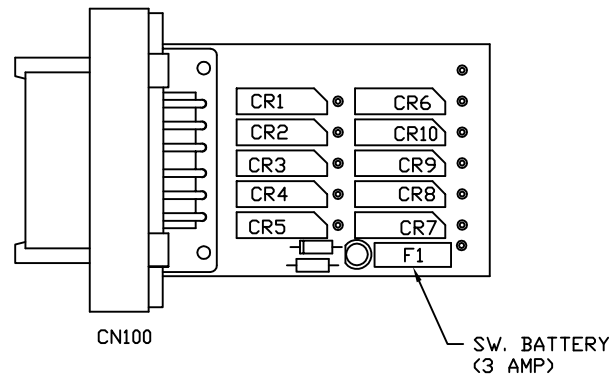


FRONT AIR
LED LAYOUT

LED #	COLOR	INPUT J3	FUSE #	OUTPUT	RELAY #	DESCRIPTION
LED3	RED	---	FUSE 2	PIN 2	CR2	LEFT FRONT RAISE (CONTACT)
LED4	YELLOW	PIN 12	---	---	CR2	LEFT FRONT RAISE (COIL)
LED5	YELLOW	PIN 11	---	---	CR3	LEFT FRONT LOWER (COIL)
LED6	RED	---	FUSE 3	PIN 3	CR3	LEFT FRONT LOWER (CONTACT)
LED7	RED	---	FUSE 4	PIN 4	CR4	RIGHT FRONT RAISE (CONTACT)
LED8	YELLOW	PIN 10	---	---	CR4	RIGHT FRONT RAISE (COIL)
LED9	YELLOW	PIN 9	---	---	CR5	RIGHT FRONT LOWER (COIL)
LED10	RED	---	FUSE 5	PIN 5	CR5	RIGHT FRONT LOWER (CONTACT)
LED11	RED	---	FUSE 6	PIN 6	CR6	COMPRESSOR (CONTACT)
LED12	YELLOW	PIN 8	---	---	CR6	COMPRESSOR (COIL)
LED19	YELLOW	PIN 4	---	---	CR10	TRAVEL (COIL)
LED20	RED	---	FUSE 10	PIN 8	CR10	TRAVEL (CONTACT)

NOTE: INSTALLATION MUST CONFORM TO GOOD SHOP PRACTICES, SAE STANDARDS, RVIA STANDARDS, AND OTHER APPLICABLE STANDARDS.

MP89599 I
11OCT07

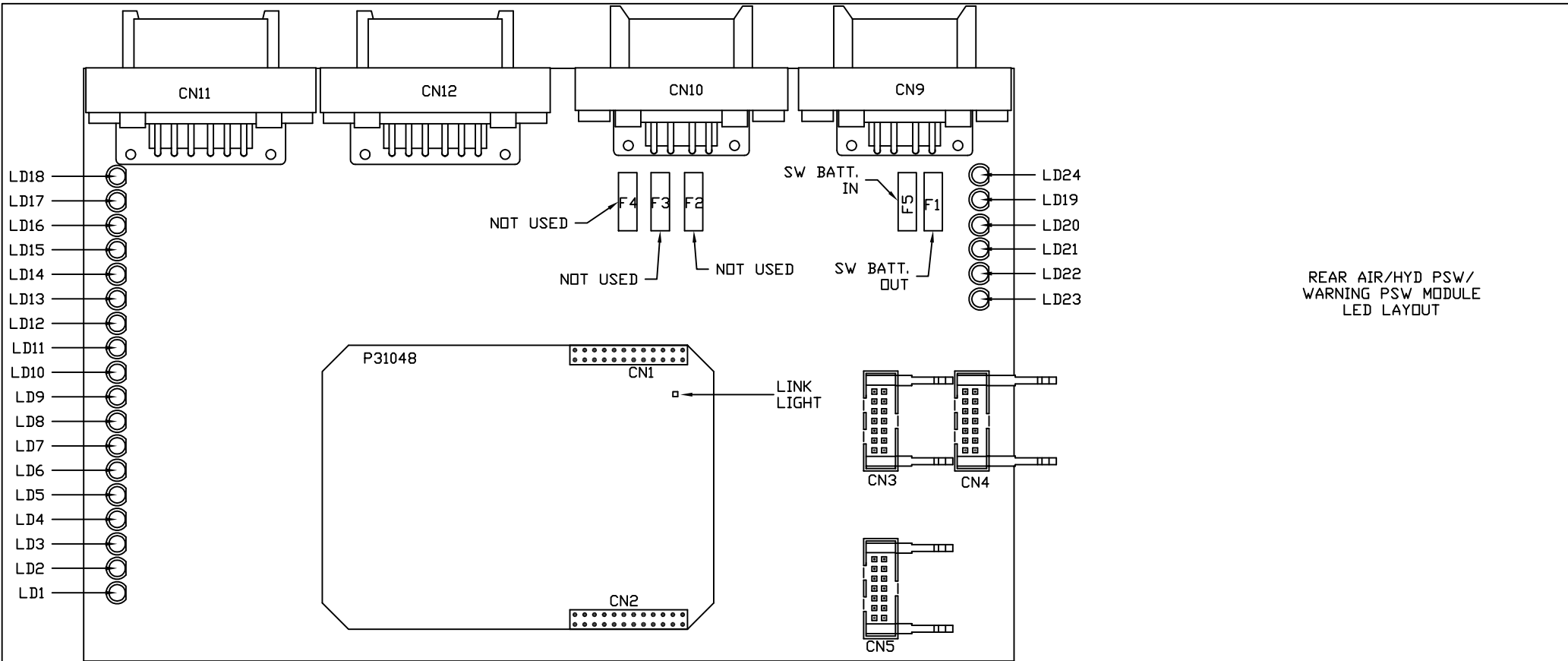


CONNECTOR	READ SWITCH	DESCRIPTION
CN 100 PIN 1	CR1	GEN. SLIDE EXTEND
CN 100 PIN 2	CR2	AIR LF PSW
CN 100 PIN 3	CR3	AIR RF PSW
CN 100 PIN 4	CR4	RF WARNING
CN 100 PIN 5	CR5	LF WARNING
CN 100 PIN 6	---	GROUND

CONNECTOR	READ SWITCH	DESCRIPTION
CN 100 PIN 7	---	NOT USED
CN 100 PIN 8	CR7	NOT USED
CN 100 PIN 9	CR8	HYD RF PSW
CN 100 PIN 10	CR9	HYD LF PSW
CN 100 PIN 11	CR10	NOT USED
CN 100 PIN 12	CR6	GEN SLIDE RETRACT

NOTE: INSTALLATION MUST CONFORM TO GOOD SHOP PRACTICES, SAE STANDARDS, RVIA STANDARDS, AND OTHER APPLICABLE STANDARDS.

MP89599 J
11OCT07

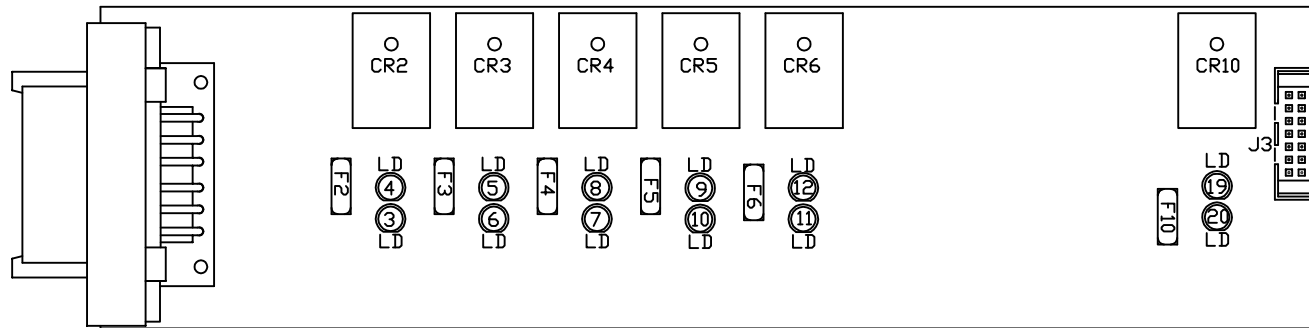


REAR AIR/HYD PSW/
WARNING PSW MODULE
LED LAYOUT

LED #	CONNECTOR	COLOR	DESCRIPTION
LED 1	NOT USED	RED	NOT USED
LED 2	NOT USED	RED	NOT USED
LED 3	NOT USED	GREEN	NOT USED
LED 4	NOT USED	YELLOW	NOT USED
LED 5	CN11 PIN 2	YELLOW	AIR LR PSW
LED 6	NOT USED	YELLOW	NOT USED
LED 7	CN11 PIN 3	GREEN	AIR RF PSW
LED 8	CN12 PIN 3	GREEN	SYSTEM AIR PSW
LED 9	NOT USED	GREEN	NOT USED

LED #	CONNECTOR	COLOR	DESCRIPTION
LED 10	NOT USED	GREEN	NOT USED
LED 11	NOT USED	YELLOW	NOT USED
LED 12	NOT USED	YELLOW	NOT USED
LED 13	NOT USED	YELLOW	NOT USED
LED 14	NOT USED	YELLOW	NOT USED
LED 15	CN11 PIN 4	GREEN	HYD RR PSW
LED 16	CN12 PIN 4	GREEN	HYD LR PSW
LED 17	CN11 PIN 9	GREEN	HYD RR WARN
LED 18	CN12 PIN 9	GREEN	HYD LR WARN
LED 19	CN11/CN12 PIN 7	RED	12V OUTPUT
LED 20	CN9 PIN 3	RED	SW BATT
LED 21	NOT USED	RED	NOT USED
LED 22	NOT USED	RED	NOT USED
LED 23	NOT USED	RED	NOT USED
LED 24	NOT USED	RED	NOT USED

NOTE: INSTALLATION MUST CONFORM TO GOOD SHOP PRACTICES, SAE STANDARDS, RVIA STANDARDS, AND OTHER APPLICABLE STANDARDS.

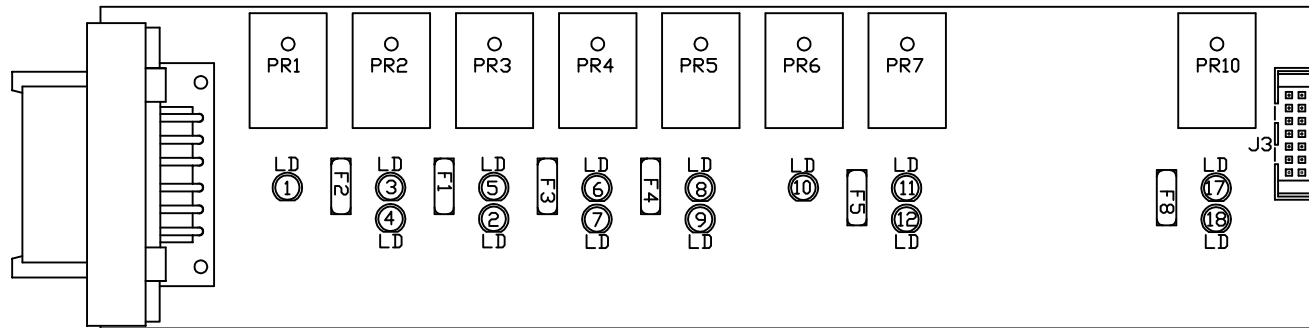


REAR AIR
LED LAYOUT

LED #	COLOR	INPUT J3	FUSE #	OUTPUT	RELAY #	DESCRIPTION
LED3	RED	---	FUSE 2	PIN 2	CR2	LEFT REAR RAISE (CONTACT)
LED4	YELLOW	PIN 12	---	---	CR2	LEFT REAR RAISE (COIL)
LED5	YELLOW	PIN 11	---	---	CR3	LEFT REAR LOWER (COIL)
LED6	RED	---	FUSE 3	PIN 3	CR3	LEFT REAR LOWER (CONTACT)
LED7	RED	---	FUSE 4	PIN 4	CR4	RIGHT REAR RAISE (CONTACT)
LED8	YELLOW	PIN 10	---	---	CR4	RIGHT REAR RAISE (COIL)
LED9	YELLOW	PIN 9	---	---	CR5	RIGHT REAR LOWER (COIL)
LED10	RED	---	FUSE 5	PIN 5	CR5	RIGHT REAR LOWER (CONTACT)
LED11	RED	---	FUSE 6	PIN 6	CR6	NOT USED
LED12	YELLOW	PIN 8	---	---	CR6	NOT USED
LED19	YELLOW	PIN 4	---	---	CR10	TRAVEL (COIL)
LED20	RED	---	FUSE 10	PIN 8	CR10	TRAVEL (CONTACT)

NOTE: INSTALLATION MUST CONFORM TO GOOD SHOP PRACTICES, SAE STANDARDS, RVIA STANDARDS, AND OTHER APPLICABLE STANDARDS.

MP89599 L
11OCT07



LEVELING
LED LAYOUT

LED #	COLOR	INPUT J3	FUSE #	OUTPUT	RELAY #	DESCRIPTION
LED1	YELLOW	PIN 13	---	PIN 1	PR1	CRX1 (COIL)
LED2	RED	PIN 11	F1	PIN 3	PR3	RF JACK (CONTACT)
LED3	YELLOW	PIN 12	---	---	PR2	LF JACK (COIL)
LED4	RED	---	F2	PIN 2	PR2	LF JACK (CONTACT)
LED5	YELLOW	PIN 11	---	---	PR3	RF JACK (COIL)
LED6	YELLOW	PIN 10	---	---	PR4	CYL. EXT. (COIL)
LED7	RED	---	F3	PIN 4	PR4	CYL. RET. (CONTACT)
LED8	YELLOW	PIN 9	---	---	PR5	RR JACK (COIL)
LED9	RED	---	F4	PIN 5	PR5	RR JACK (CONTACT)
LED10	YELLOW	PIN 8	---	PIN 6	PR6	CRX2 (COIL)
LED11	YELLOW	PIN 7	---	---	PR7	LR JACK (COIL)
LED12	RED	---	F5	PIN 7	PR7	LR JACK (CONTACT)
LED13	---	---	---	---	---	---
LED14	---	---	---	---	---	---
LED15	---	---	---	---	---	---
LED16	---	---	---	---	---	---
LED17	YELLOW	PIN 4	---	---	PR10	GEN. RET. (COIL)
LED18	RED	---	F8	PIN 11	PR10	GEN. RET. (CONTACT)



NOTE: INSTALLATION MUST CONFORM TO GOOD SHOP PRACTICES, SAE STANDARDS, RVIA STANDARDS, AND OTHER APPLICABLE STANDARDS.

MP89599 M
11OCT07