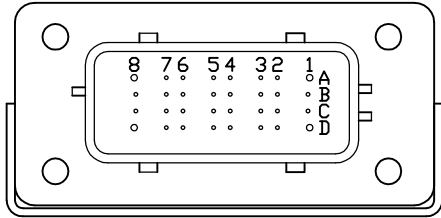


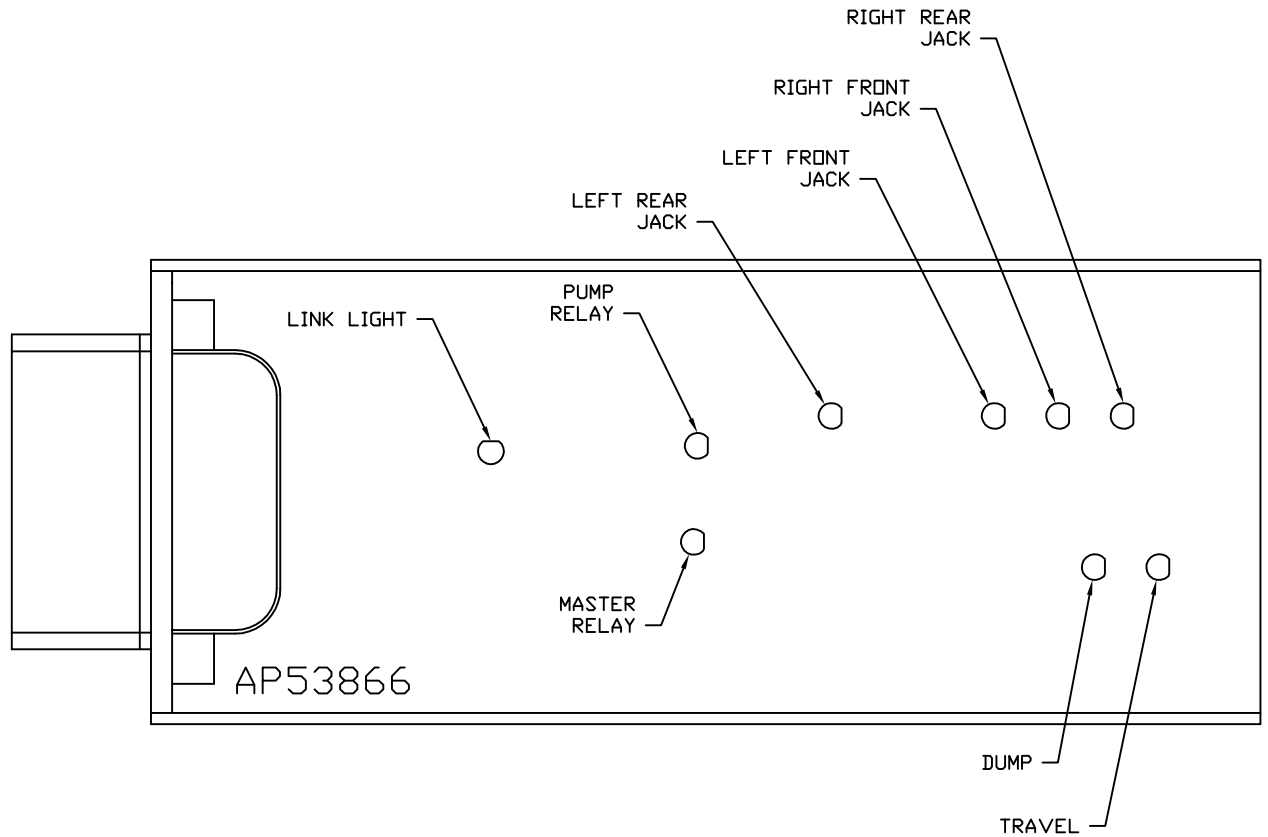
FRONT VIEW - AP53866



PIN

- A1. BLK(W7500) - SYSTEM LATCH
- A2. YELLOW - CAN HIGH
- A3. N/C
- A4. N/C
- A5. BLK(W2000) - RIGHT FRONT JACK WARNING SWITCH
- A6. BLK(W2200) - RIGHT FRONT JACK PRESSURE SWITCH
- A7. BLK(W3200) - RIGHT REAR JACK PRESSURE SWITCH
- A8. BLK(W8101) - 50 LB. PRESSURE SWITCH
- B1. RED(W6800) - TOUCH PANEL POWER
- B2. GREEN - CAN LOW
- B3. WHT(W6230) - TOUCH PANEL GROUND
- B4. N/C
- B5. BLK(W3000) - RIGHT REAR JACK WARNING SWITCH
- B6. BLK(W4200) - LEFT REAR JACK PRESSURE SWITCH
- B7. BLK(W8601) - GEN SLIDE PUMP REQUEST
- B8. BLK(W8100) - 3000 LB. PRESSURE SWITCH
- C1. RED(W6121) - LEVEL SENSOR POWER
- C2. CAN SHIELD
- C3. WHT(W6231) - LEVEL SENSOR GROUND
- C4. BLK(W0400) - REAR SENSE
- C5. BLK(W4000) - LEFT REAR WARNING SWITCH
- C6. N/C
- C7. N/C
- C8. BLK(W0300) - RIGHT SIDE SENSE
- D1. RED(W6120) - ACCESSORY
- D2. WHT(W6235) - WARNING SWITCH GROUND
- D3. N/C
- D4. BLK(W1000) - LEFT FRONT JACK WARNING SWITCH
- D5. BLK(W1200) - LEFT FRONT JACK PRESSURE SWITCH
- D6. BLK(W0100) - LEFT SIDE SENSE
- D7. BLK(W0200) - FRONT SENSE
- D8. BLK(W9000) - PARK BRAKE

NOTE: WIRE NUMBERS ON THIS SHEET ARE REFERENCED TO HARNESS PLUGS.

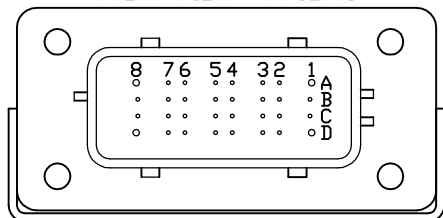


NOTE: INSTALLATION MUST CONFORM TO GOOD SHOP PRACTICES, SAE STANDARDS, RVIA STANDARDS, AND OTHER APPLICABLE STANDARDS.

		HWH		I-80 EXIT 267 SOUTH RT 1 MOSCOW, IOWA 52760	
		SCALE 1:3	DATE 25FEB15	DRAWN BY .	
		SYSTEM SCHEMATIC ELEC			
		DRAWING NUMBER MP91113 A/E			
		THE INFORMATION DISCLOSED ON THIS DRAWING IS CONFIDENTIAL AND MUST NOT BE DISCLOSED OR USED IN ANY MANNER WHICH WILL BE DETRIMENTAL TO THE HWH CORPORATION			

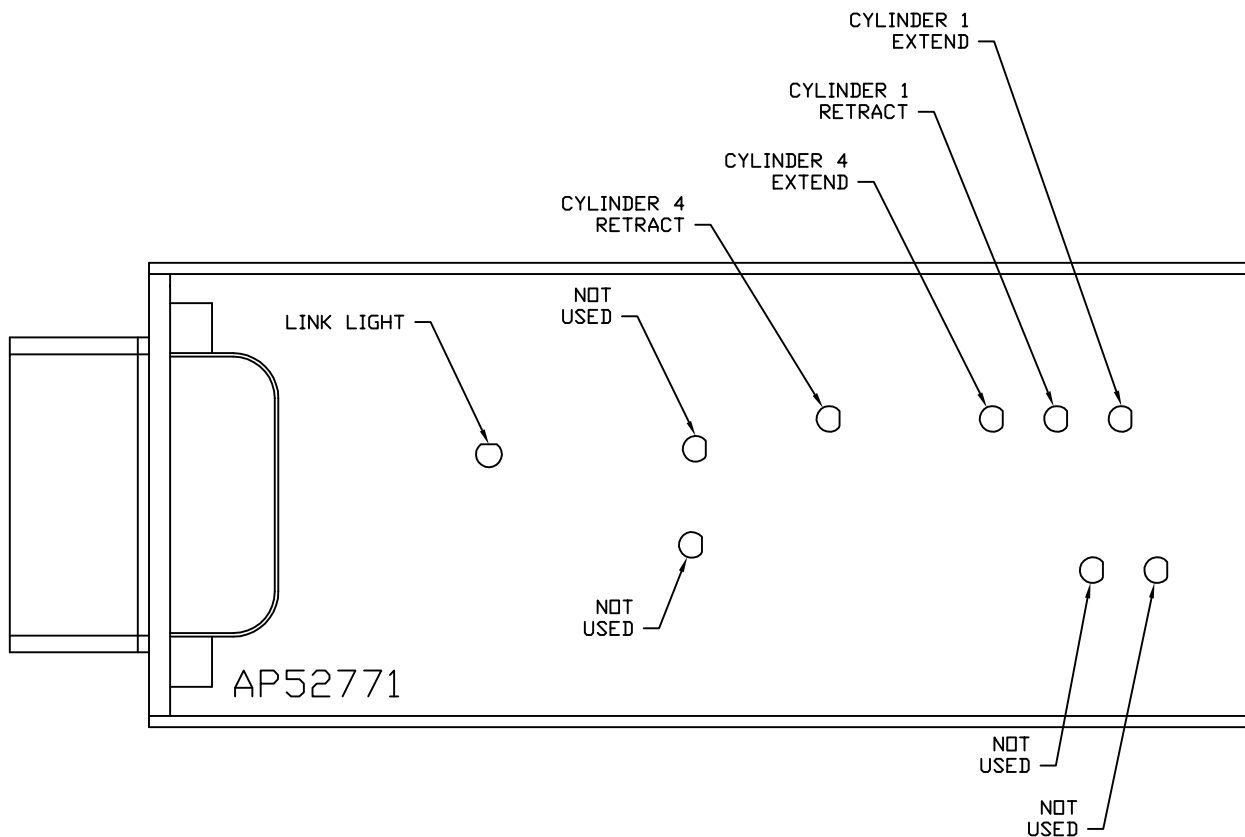
23JAN17	ADDED NOTE	
1	14MAY15	ADDED HARNESS PART #'S
NO.	DATE	REVISION

FRONT VIEW - AP52771

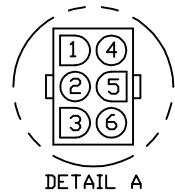


- PIN
- A1. BLACK - N/C
 - A2. YELLOW - CAN HIGH
 - A3. N/C
 - A4. N/C
 - A5. BLK(W5700) - ROOM 1 OUT LIMIT SWITCH
 - A6. BLK(W5000) - ROOM 1 EXTEND
 - A7. BLK(W5100) - ROOM 1 RETRACT
 - A8. N/C
 - B1. N/C
 - B2. GREEN - CAN LOW
 - B3. N/C
 - B4. N/C
 - B5. BLK(W5704) - ROOM 4 IN LIMIT SWITCH
 - B6. BKK(W5001) - ROOM 4 EXTEND
 - B7. BLK(W5101) - ROOM 4 RETRACT
 - B8. N/C
 - C1. BLK(W7500) - SYSTEM LATCH
 - C2. CAN SHIELD
 - C3. N/C
 - C4. N/C
 - C5. BLK(W5701) - ROOM 4 OUT LIMIT SWITCH
 - C6. N/C
 - C7. N/C
 - C8. N/C
 - D1. BLK(W6876) - SYSTEM WAKE UP
 - D2. WHT(W6236) - LIMIT SWITCH GROUND
 - D3. N/C
 - D4. BLK(W5703) - ROOM 1 IN LIMIT SWITCH
 - D5. N/C
 - D6. N/C
 - D7. N/C
 - D8. BLACK - N/C

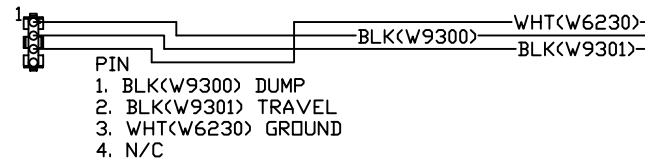
NOTE: WIRE NUMBERS ON THIS SHEET ARE REFERENCED TO HARNESS PLUGS.



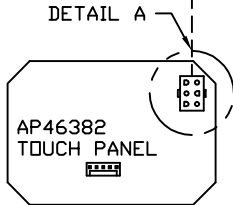
NOTE: INSTALLATION MUST CONFORM TO GOOD SHOP PRACTICES, SAE STANDARDS, RVIA STANDARDS, AND OTHER APPLICABLE STANDARDS.



TO OEM PROVIDED
PILOT DUMP CONNECTION

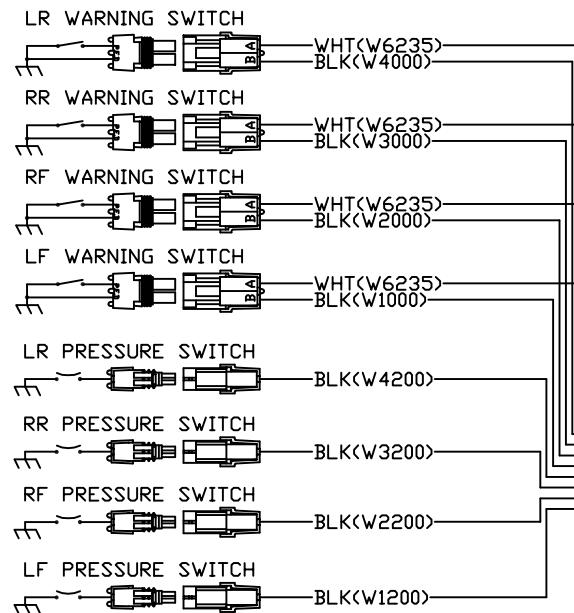
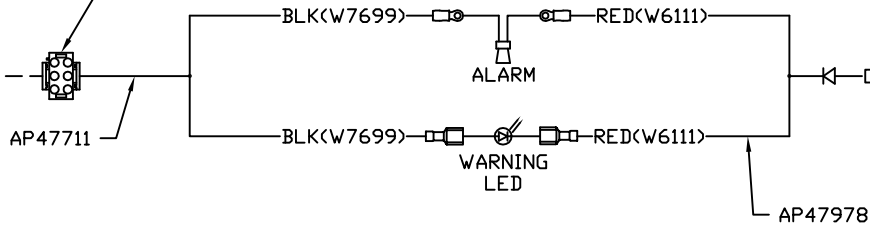


- PIN
 1. N/C
 2. N/C
 3. N/C
 4. N/C
 5. BLK(W7699) WARNING LED/ALARM CONTROL
 6. N/C



- PIN
 1. YELLOW CAN HI
 2. GREEN CAN LOW
 3. CAN SHIELD
 4. WHT(W6230) GROUND
 5. RED(W6800) POWER

120 OHM
TERMINATION
RESISTOR

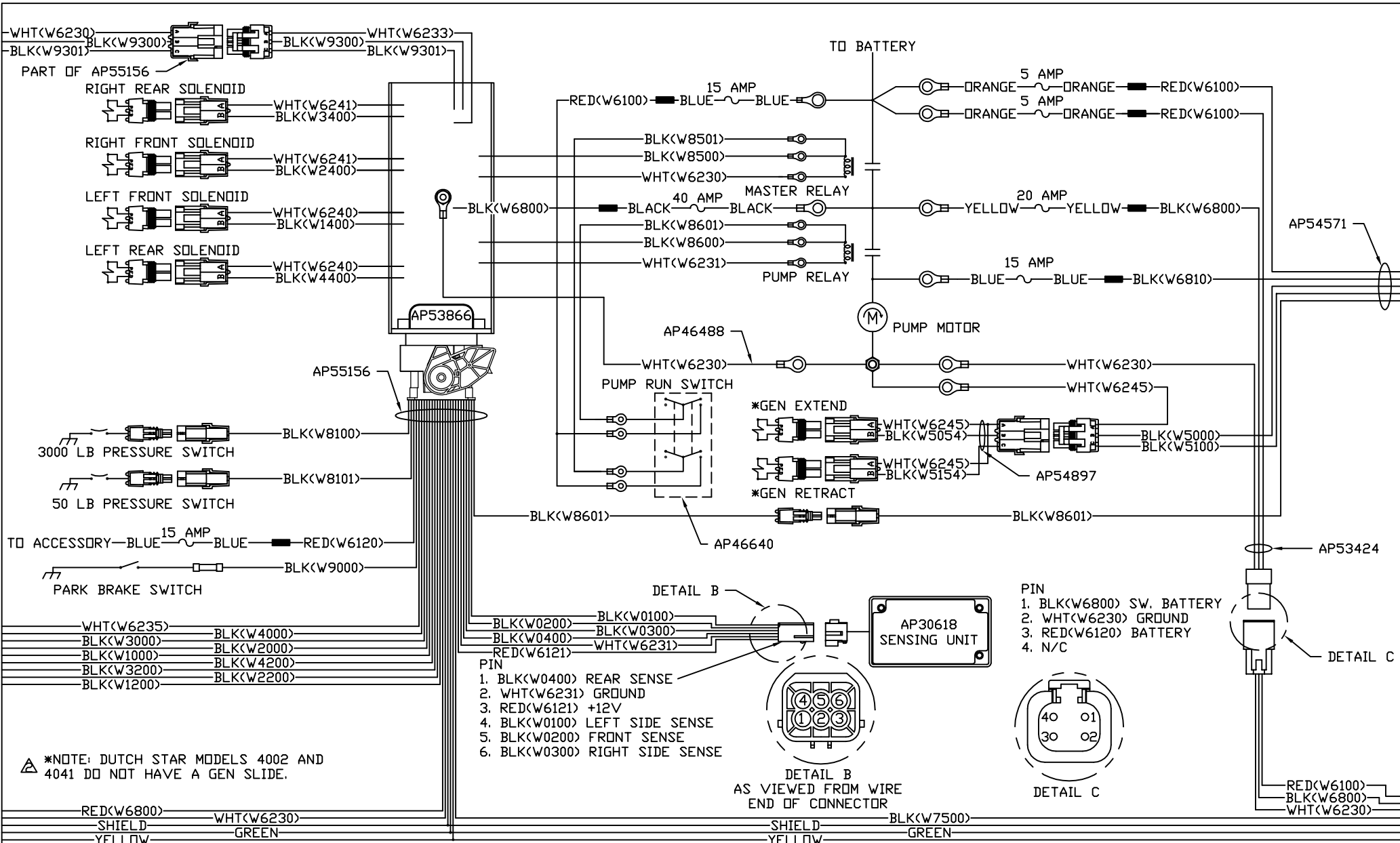


RED(W6800)
SHIELD
YELLOW

WHT(W6230)
GREEN

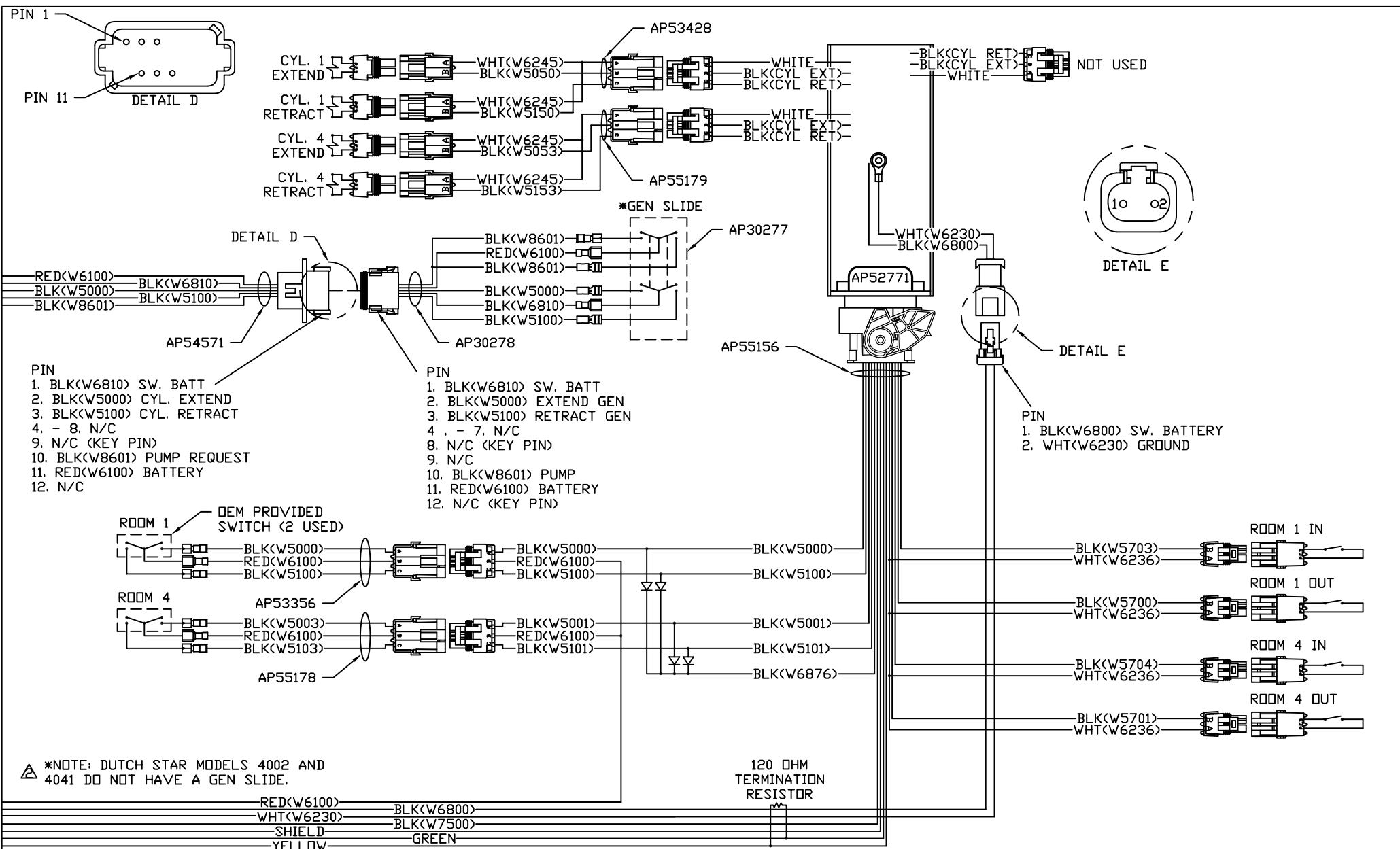
NOTE: INSTALLATION MUST CONFORM TO GOOD SHOP PRACTICES, SAE STANDARDS, RVIA STANDARDS, AND OTHER APPLICABLE STANDARDS.

MP91113 C
14MAY15



*NOTE: DUTCH STAR MODELS 4002 AND 4041 DO NOT HAVE A GEN SLIDE.

NOTE: INSTALLATION MUST CONFORM TO GOOD SHOP PRACTICES, SAE STANDARDS, RVIA STANDARDS, AND OTHER APPLICABLE STANDARDS.



- PIN
1. BLK(W6810) SW. BATT
 2. BLK(W5000) CYL. EXTEND
 3. BLK(W5100) CYL. RETRACT
 4. - 8. N/C
 9. N/C (KEY PIN)
 10. BLK(W8601) PUMP REQUEST
 11. RED(W6100) BATTERY
 12. N/C

- PIN
1. BLK(W6810) SW. BATT
 2. BLK(W5000) EXTEND GEN
 3. BLK(W5100) RETRACT GEN
 4. - 7. N/C
 8. N/C (KEY PIN)
 9. N/C
 10. BLK(W8601) PUMP
 11. RED(W6100) BATTERY
 12. N/C (KEY PIN)

- PIN
1. BLK(W6800) SW. BATTERY
 2. WHT(W6230) GROUND

*NOTE: DUTCH STAR MODELS 4002 AND 4041 DO NOT HAVE A GEN SLIDE.

NOTE: INSTALLATION MUST CONFORM TO GOOD SHOP PRACTICES, SAE STANDARDS, RVIA STANDARDS, AND OTHER APPLICABLE STANDARDS.