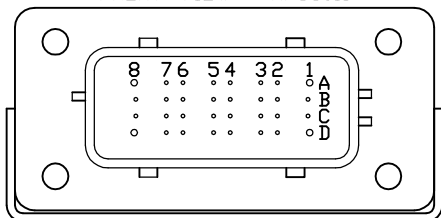


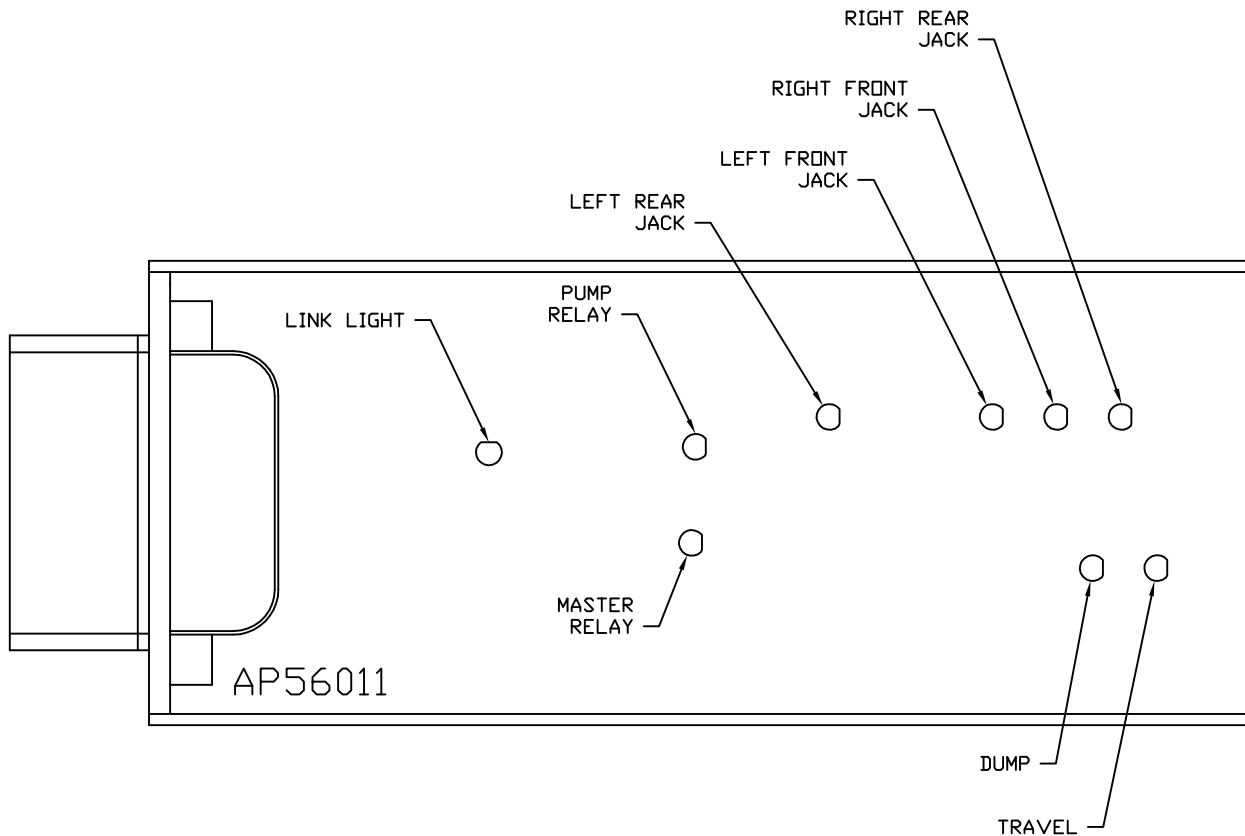
FRONT VIEW - AP56011



PIN

- A1. BLK(W8601) - GEN SLIDE PUMP REQUEST
- A2. YELLOW - CAN HIGH
- A3. N/C
- A4. N/C
- A5. BLK(W2000) - RIGHT FRONT JACK WARNING SWITCH
- A6. BLK(W2200) - RIGHT FRONT JACK PRESSURE SWITCH
- A7. BLK(W3200) - RIGHT REAR JACK PRESSURE SWITCH
- A8. BLK(W8101) - 50 LB. PRESSURE SWITCH
- B1. RED(W6800) - TOUCH PANEL POWER
- B2. GREEN - CAN LOW
- B3. WHT(W6230) - TOUCH PANEL GROUND
- B4. N/C
- B5. BLK(W3000) - RIGHT REAR JACK WARNING SWITCH
- B6. BLK(W4200) - LEFT REAR JACK PRESSURE SWITCH
- B7. N/C
- B8. BLK(W8100) - 3000 LB. PRESSURE SWITCH
- C1. RED(W6121) - LEVEL SENSOR POWER
- C2. CAN SHIELD
- C3. WHT(W6231) - LEVEL SENSOR GROUND
- C4. BLK(W0400) - REAR SENSE
- C5. BLK(W4000) - LEFT REAR WARNING SWITCH
- C6. RED(W6110) -IGNITION SENSE
- C7. N/C
- C8. BLK(W0300) - RIGHT SIDE SENSE
- D1. RED(W6105) - DEM SUPPLIED 5A BATTERY POWER
- D2. WHT(W6235) - WARNING SWITCH GROUND
- D3. N/C
- D4. BLK(W1000) - LEFT FRONT JACK WARNING SWITCH
- D5. BLK(W1200) - LEFT FRONT JACK PRESSURE SWITCH
- D6. BLK(W0100) - LEFT SIDE SENSE
- D7. BLK(W0200) - FRONT SENSE
- D8. BLK(W9000) - PARK BRAKE

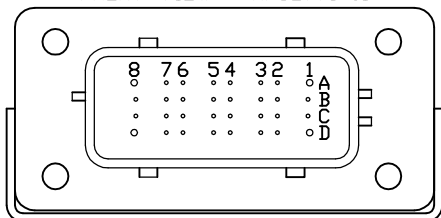
NOTE: WIRE NUMBERS ON THIS SHEET ARE REFERENCED TO HARNESS PLUGS.



NOTE: INSTALLATION MUST CONFORM TO GOOD SHOP PRACTICES, SAE STANDARDS, RVIA STANDARDS, AND OTHER APPLICABLE STANDARDS.

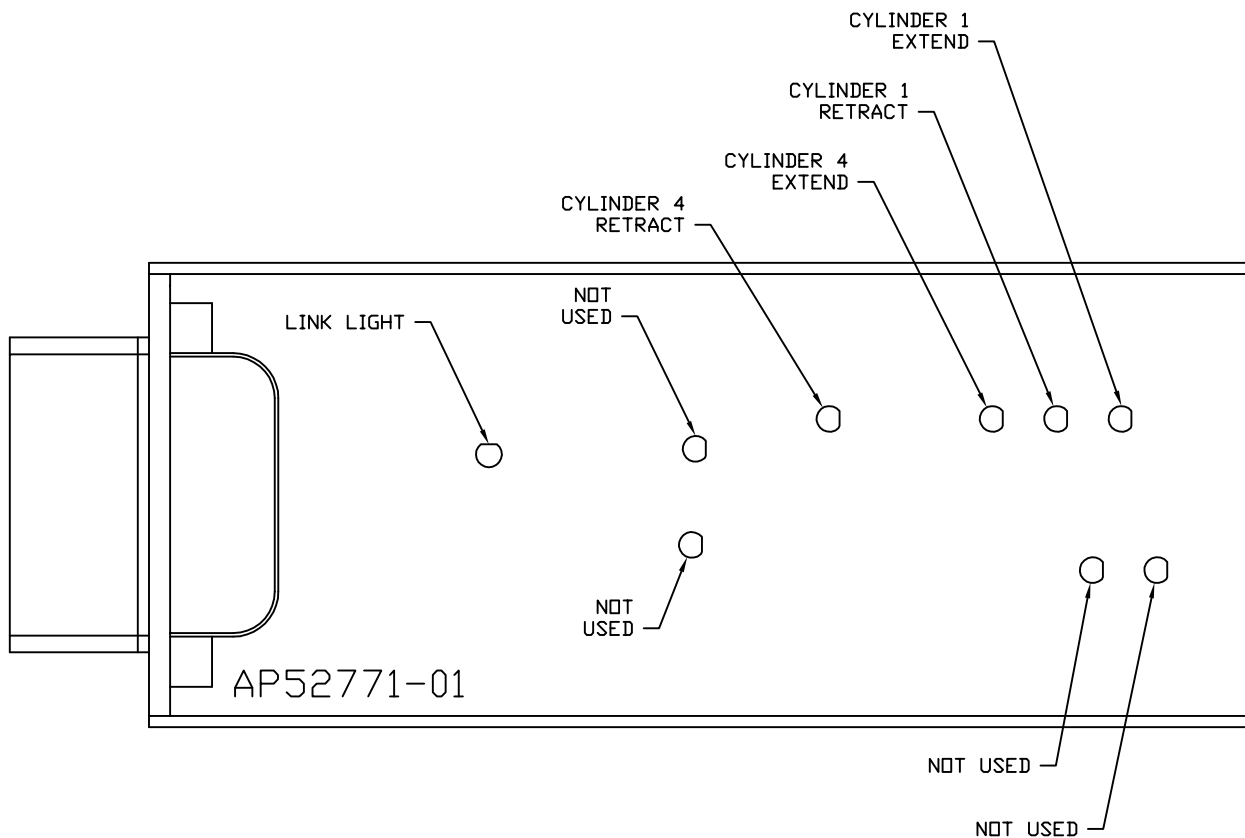
		HWH I-80 EXIT 267 SOUTH RT 1 MOSCOW, IOWA 52760	
▲	31JUL17	AD'D OVERRIDE, CURB SW WARN	SCALE 1:3
▲	19JAN17	WAS "STEP IN"&"STEP OUT"	DATE 06NOV15
▲	26JAN16	WAS "PRIMARY VALVE"	DRAWN BY .
NO.	DATE	REVISION	SYSTEM SCHEMATIC ELEC
THE INFORMATION DISCLOSED ON THIS DRAWING IS CONFIDENTIAL AND MUST NOT BE DISCLOSED OR USED IN ANY MANNER WHICH WILL BE DETRIMENTAL TO THE HWH CORPORATION			DRAWING NUMBER MP91171 A/G

FRONT VIEW - AP52771-01



- PIN
- A1. BLACK - N/C
 - A2. YELLOW - CAN HIGH
 - A3. N/C
 - A4. N/C
 - A5. BLK(W5700) - ROOM 1 OUT LIMIT SWITCH
 - A6. BLK(W5000) - ROOM 1 EXTEND
 - A7. BLK(W5100) - ROOM 1 RETRACT
 - A8. N/C
 - B1. N/C
 - B2. GREEN - CAN LOW
 - B3. N/C
 - B4. N/C
 - B5. BLK(W5704) - ROOM 4 IN LIMIT SWITCH
 - B6. BKK(W5001) - ROOM 4 EXTEND
 - B7. BLK(W5101) - ROOM 4 RETRACT
 - B8. N/C
 - C1. RED(W6101) - ROOM SWITCH POWER
 - C2. CAN SHIELD
 - C3. N/C
 - C4. N/C
 - C5. BLK(W5701) - ROOM 4 OUT LIMIT SWITCH
 - C6. N/C
 - C7. N/C
 - C8. N/C
 - D1. RED(W6105) - OEM SUPPLIED 5A BATTERY
 - D2. WHT(W6236) - LIMIT SWITCH GROUND
 - D3. N/C
 - D4. BLK(W5703) - ROOM 1 IN LIMIT SWITCH
 - D5. N/C
 - D6. N/C
 - D7. N/C
 - D8. BLACK - N/C

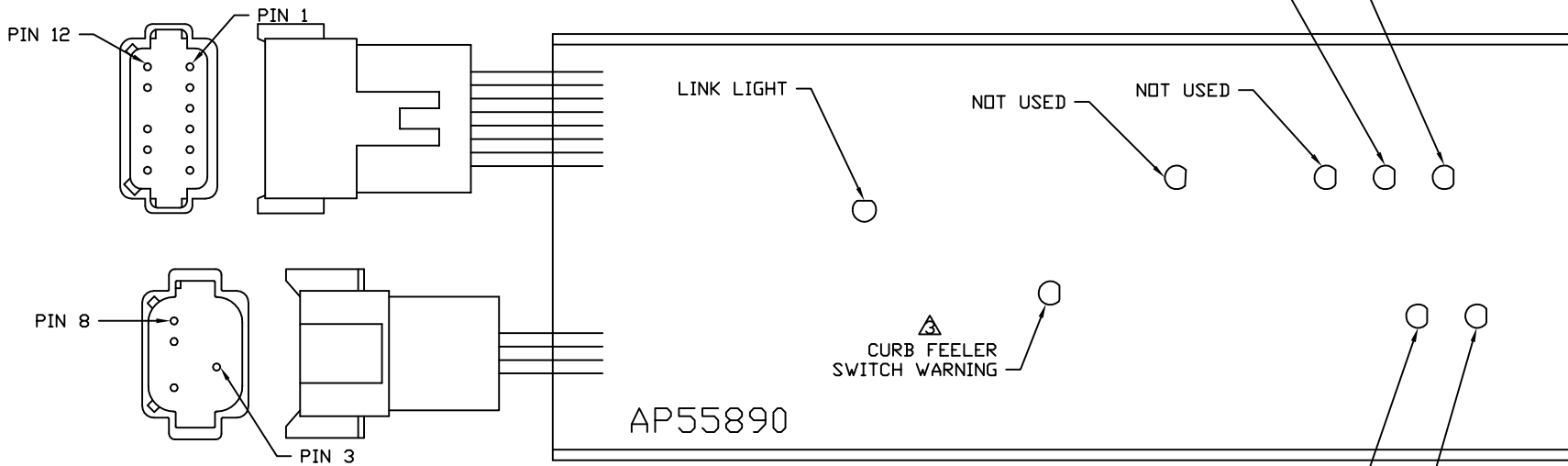
NOTE: WIRE NUMBERS ON THIS SHEET ARE REFERENCED TO HARNESS PLUGS.



NOTE: INSTALLATION MUST CONFORM TO GOOD SHOP PRACTICES, SAE STANDARDS, RVIA STANDARDS, AND OTHER APPLICABLE STANDARDS.

(BROWN)
PIN

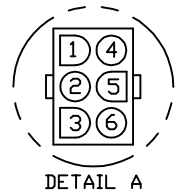
- 1 WHT(W6231) - GROUND
- 2 BLK(W5730) - STEP MASTER SWITCH
- 3 BLK(W5731) - MAGNETIC DOOR SWITCH
- 4 BLK(W5732) - CURB FEELER SWITCH
- 5 BLK(W5733) - SHIN GUARD SWITCH
- 6 WHT(W6230) - GROUND
- 7 RED(W6800) - +12V TO STEP MASTER SWITCH
- 8 BLK(W5700) - STEP IN LIMIT SWITCH
- 9 BLK(W5702) - STEP OUT LIMIT SWITCH
- 10 N/C
- △ 11 BLK(W7540) - OVERRIDE SWITCH
- 12 RED(W6801) - +12V TO MAGNETIC DOOR SWITCH



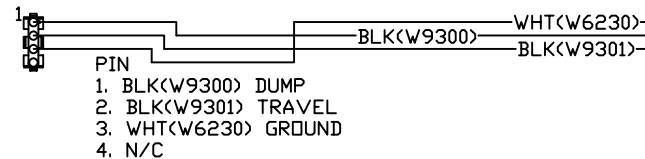
(BLACK)
PIN

- 1 N/C
- 2 N/C
- 3 RED(W6105) - OEM SUPPLIED 5A BATTERY
- 4 N/C
- 5 CAN SHIELD
- 6 N/C
- 7 GREEN - CAN LOW
- 8 YELLOW - CAN HI

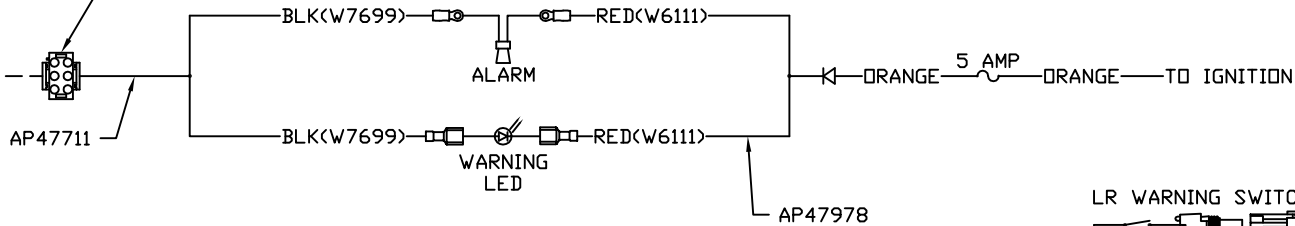
NOTE: INSTALLATION MUST CONFORM TO GOOD SHOP PRACTICES, SAE STANDARDS, RVIA STANDARDS, AND OTHER APPLICABLE STANDARDS.



TO OEM PROVIDED
PILOT DUMP CONNECTION

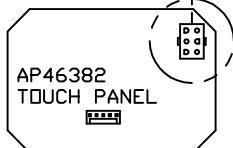


- PIN
1. N/C
2. N/C
3. N/C
4. N/C
5. BLK(W7699) WARNING LED/ALARM CONTROL
6. N/C



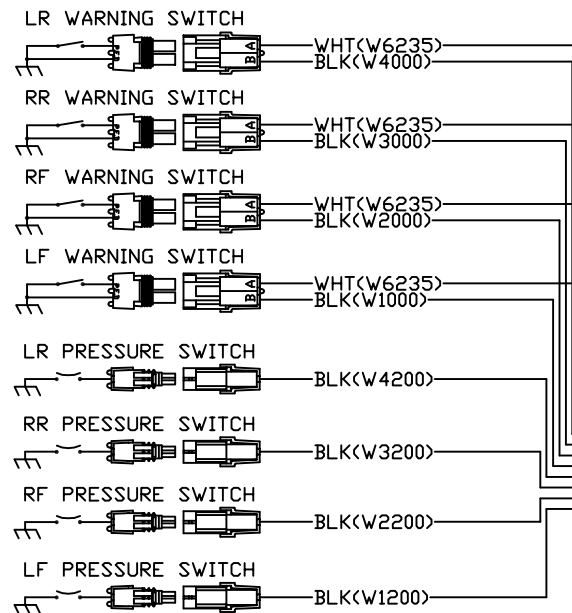
AP56002

DETAIL A



- PIN
1 YELLOW CAN HI
2 GREEN CAN LOW
3 CAN SHIELD
4 WHT(W6230) GROUND
5 RED(W6800) POWER

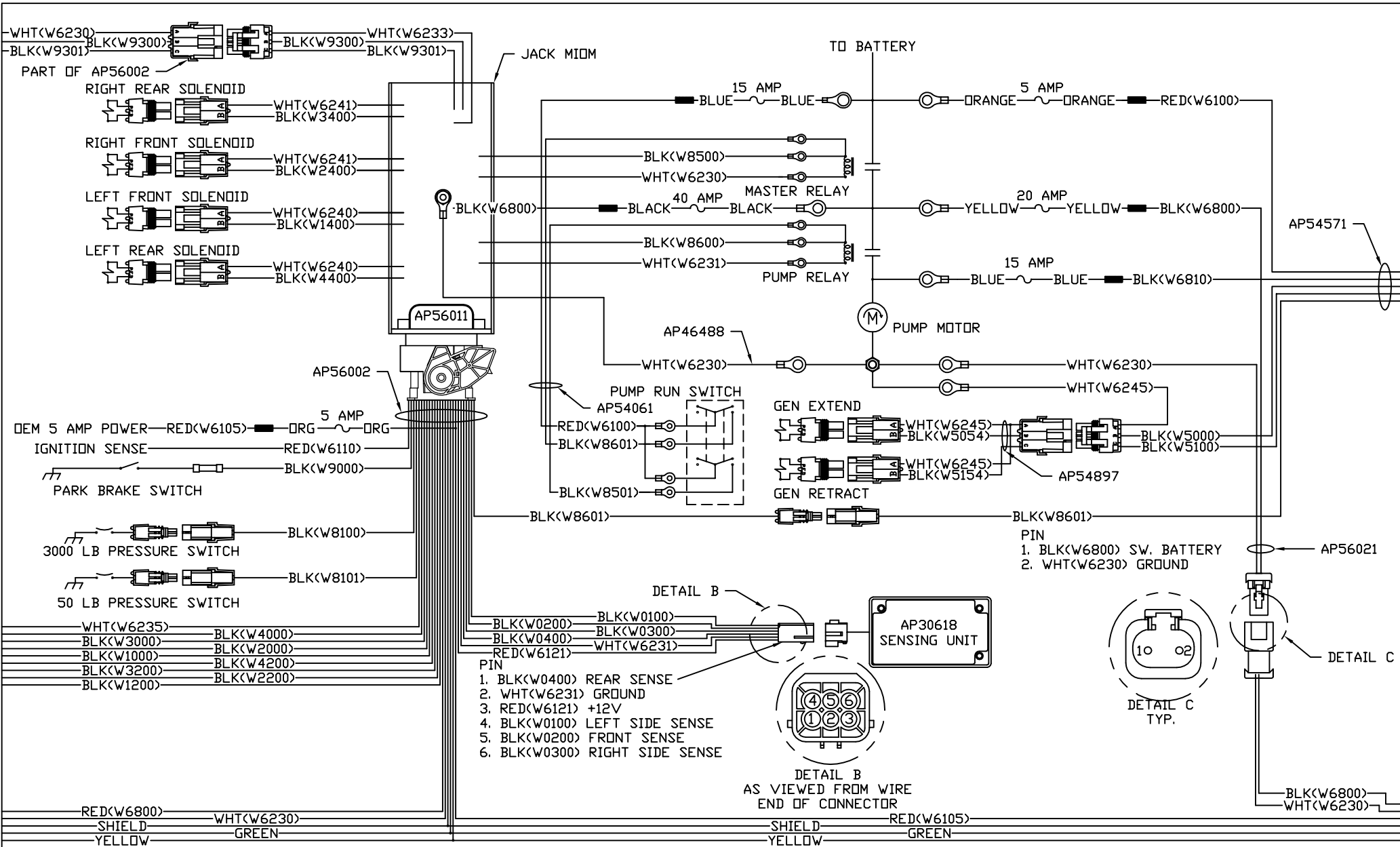
120 OHM
TERMINATION
RESISTOR



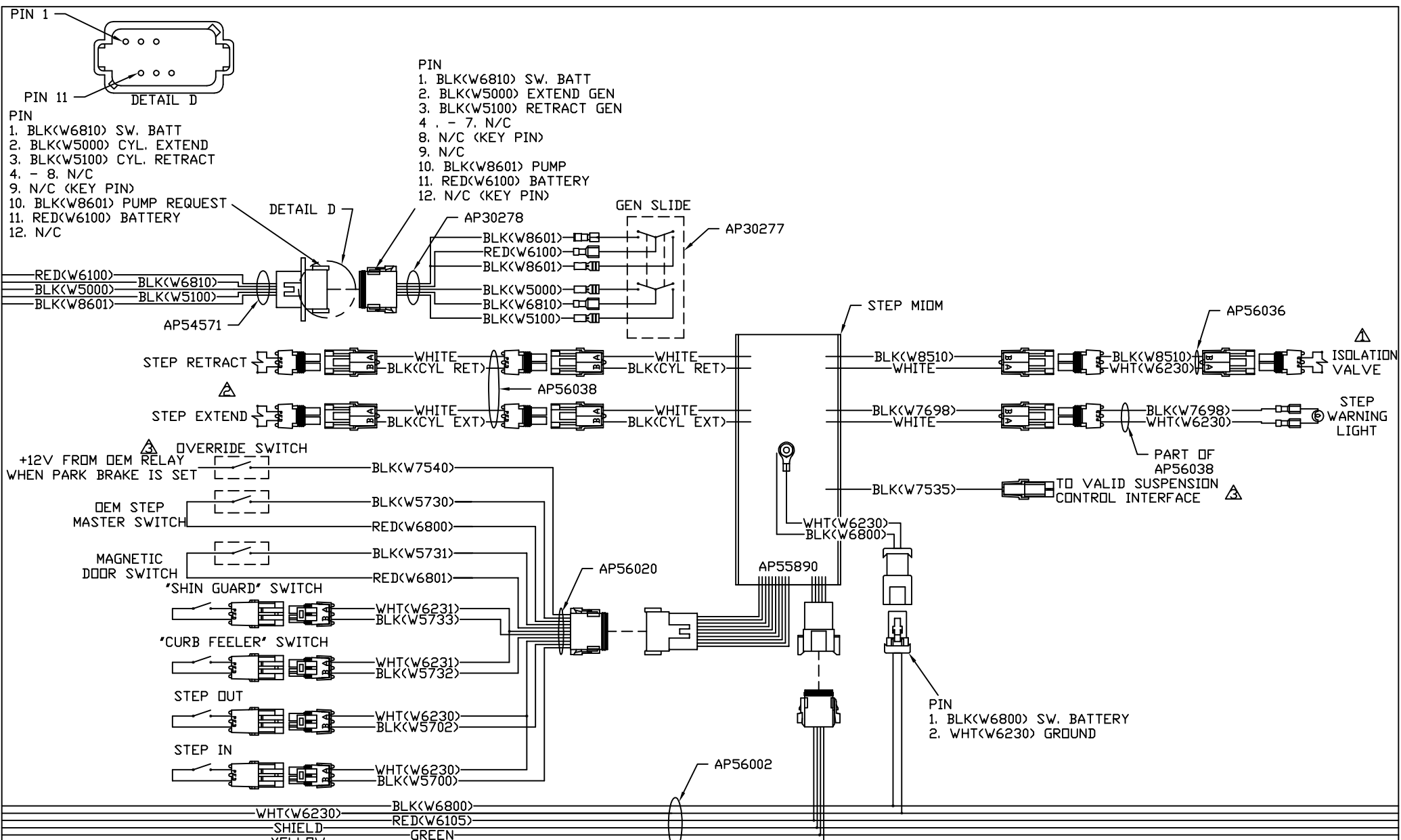
RED(W6800)
SHIELD
YELLOW
WHT(W6230)
GREEN

NOTE: INSTALLATION MUST CONFORM TO GOOD SHOP PRACTICES, SAE STANDARDS, RVIA STANDARDS, AND OTHER APPLICABLE STANDARDS.

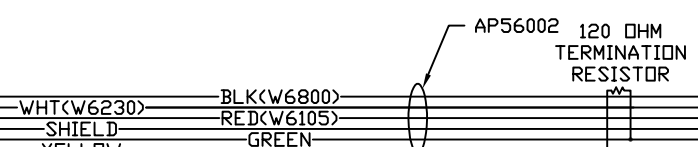
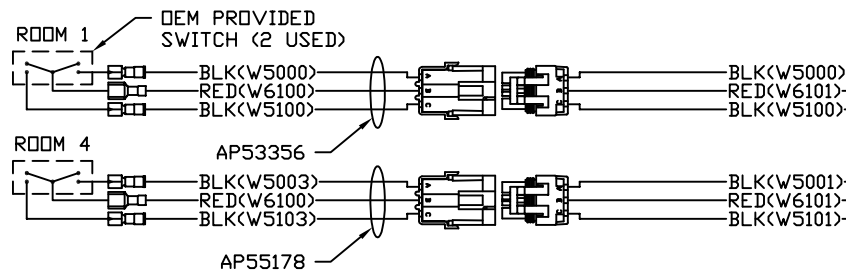
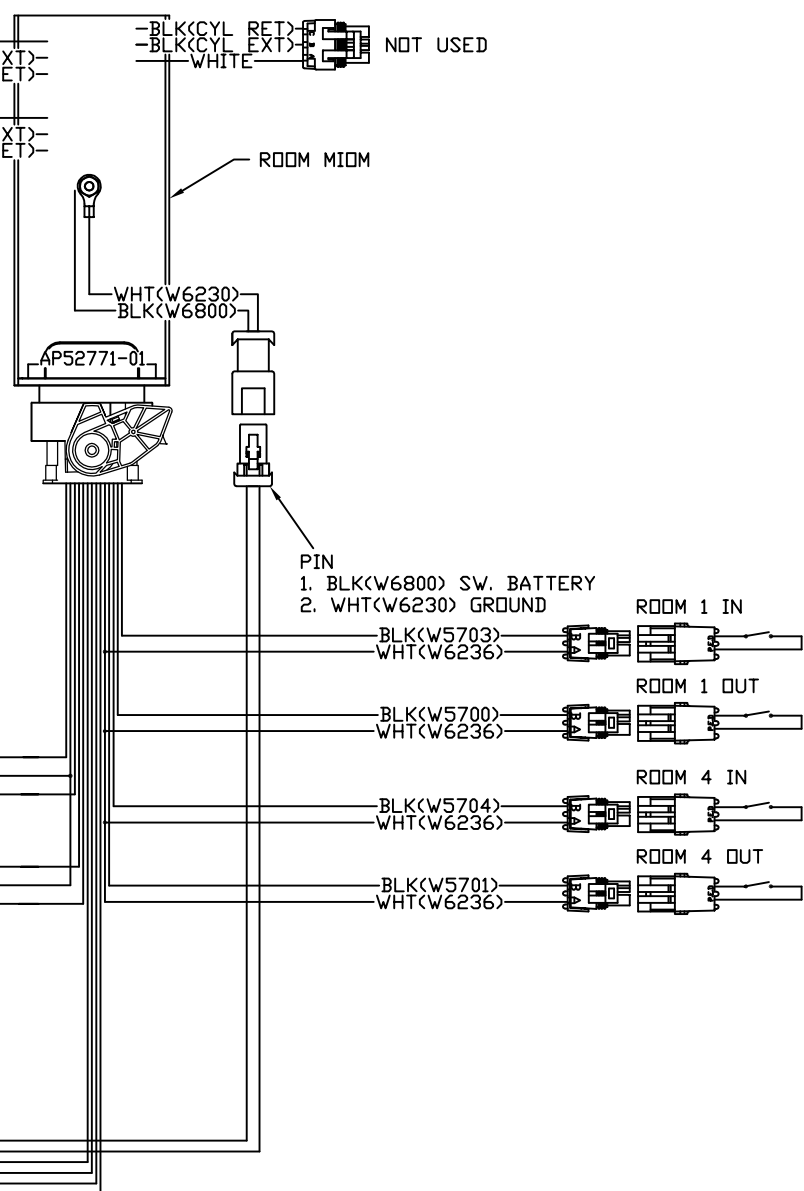
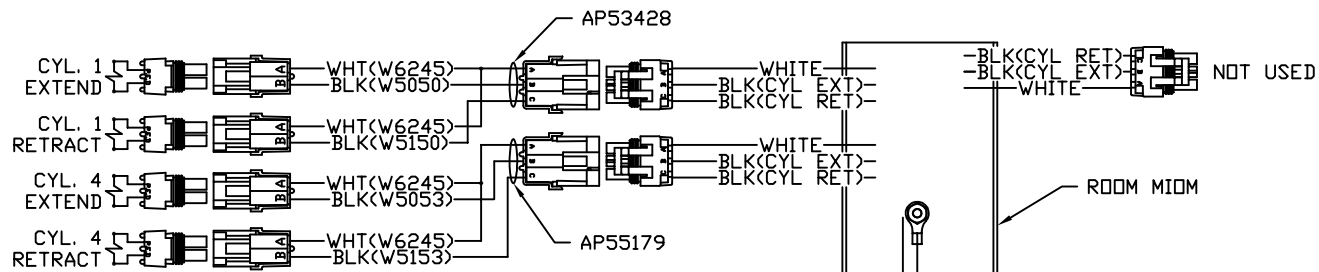
MP91171 D
06NOV15



NOTE: INSTALLATION MUST CONFORM TO GOOD SHOP PRACTICES, SAE STANDARDS, RVIA STANDARDS, AND OTHER APPLICABLE STANDARDS.



NOTE: INSTALLATION MUST CONFORM TO GOOD SHOP PRACTICES, SAE STANDARDS, RVIA STANDARDS, AND OTHER APPLICABLE STANDARDS.



NOTE: INSTALLATION MUST CONFORM TO GOOD SHOP PRACTICES, SAE STANDARDS, RVIA STANDARDS, AND OTHER APPLICABLE STANDARDS.