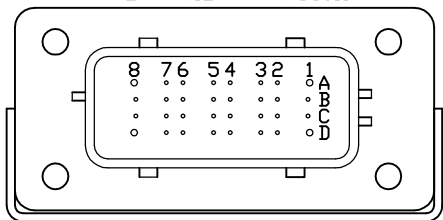


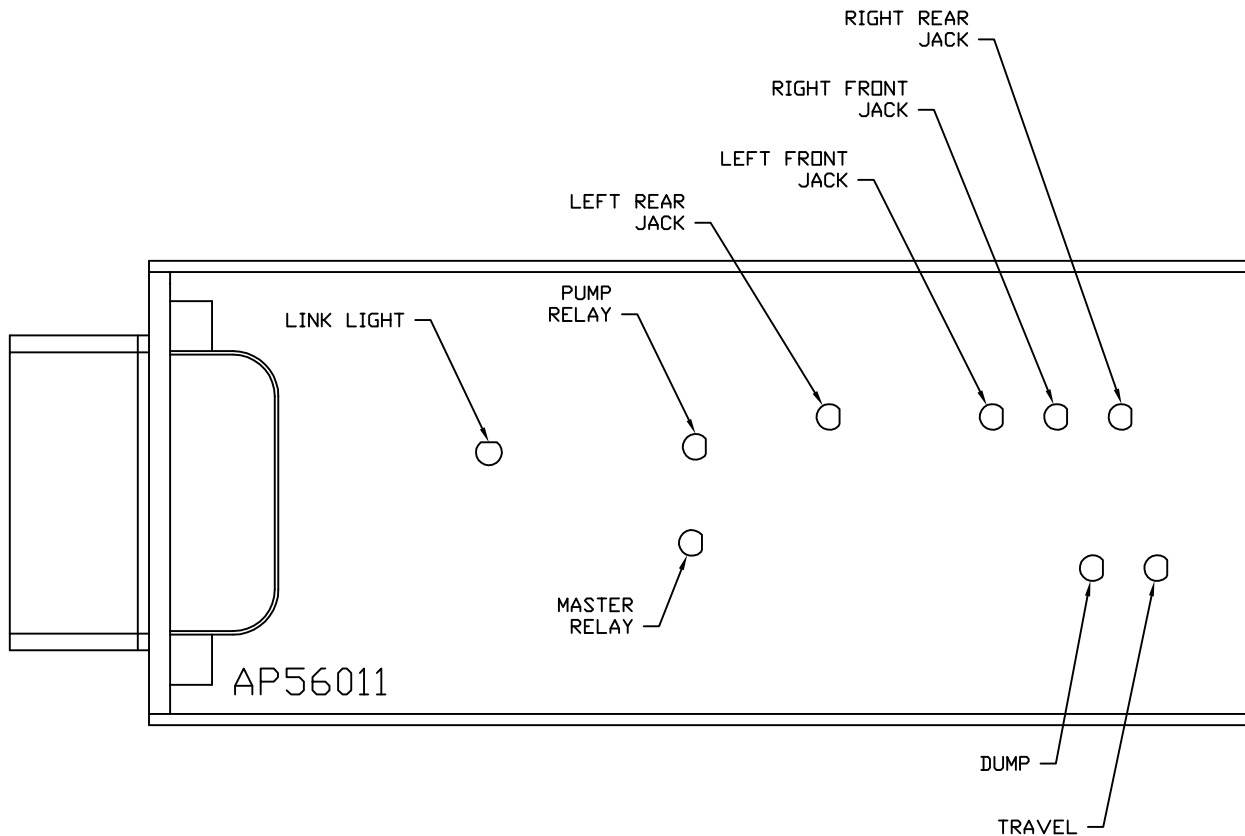
FRONT VIEW - AP56011



PIN

- A1. BLK(W8601) - GEN SLIDE PUMP REQUEST
- A2. YELLOW - CAN HIGH
- A3. N/C
- A4. N/C
- A5. BLK(W2000) - RIGHT FRONT JACK WARNING SWITCH
- A6. BLK(W2200) - RIGHT FRONT JACK PRESSURE SWITCH
- A7. BLK(W3200) - RIGHT REAR JACK PRESSURE SWITCH
- A8. BLK(W8101) - 50 LB. PRESSURE SWITCH
- B1. RED(W6800) - TOUCH PANEL POWER
- B2. GREEN - CAN LOW
- B3. WHT(W6230) - TOUCH PANEL GROUND
- B4. N/C
- B5. BLK(W3000) - RIGHT REAR JACK WARNING SWITCH
- B6. BLK(W4200) - LEFT REAR JACK PRESSURE SWITCH
- B7. N/C
- B8. BLK(W8100) - 3000 LB. PRESSURE SWITCH
- C1. RED(W6121) - LEVEL SENSOR POWER
- C2. CAN SHIELD
- C3. WHT(W6231) - LEVEL SENSOR GROUND
- C4. BLK(W0400) - REAR SENSE
- C5. BLK(W4000) - LEFT REAR WARNING SWITCH
- C6. RED(W6110) -IGNITION SENSE
- C7. N/C
- C8. BLK(W0300) - RIGHT SIDE SENSE
- D1. RED(W6105) - DEM SUPPLIED 5A BATTERY POWER
- D2. WHT(W6235) - WARNING SWITCH GROUND
- D3. N/C
- D4. BLK(W1000) - LEFT FRONT JACK WARNING SWITCH
- D5. BLK(W1200) - LEFT FRONT JACK PRESSURE SWITCH
- D6. BLK(W0100) - LEFT SIDE SENSE
- D7. BLK(W0200) - FRONT SENSE
- D8. BLK(W9000) - PARK BRAKE

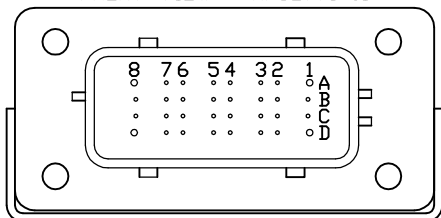
NOTE: WIRE NUMBERS ON THIS SHEET ARE REFERENCED TO HARNESS PLUGS.



NOTE: INSTALLATION MUST CONFORM TO GOOD SHOP PRACTICES, SAE STANDARDS, RVIA STANDARDS, AND OTHER APPLICABLE STANDARDS.

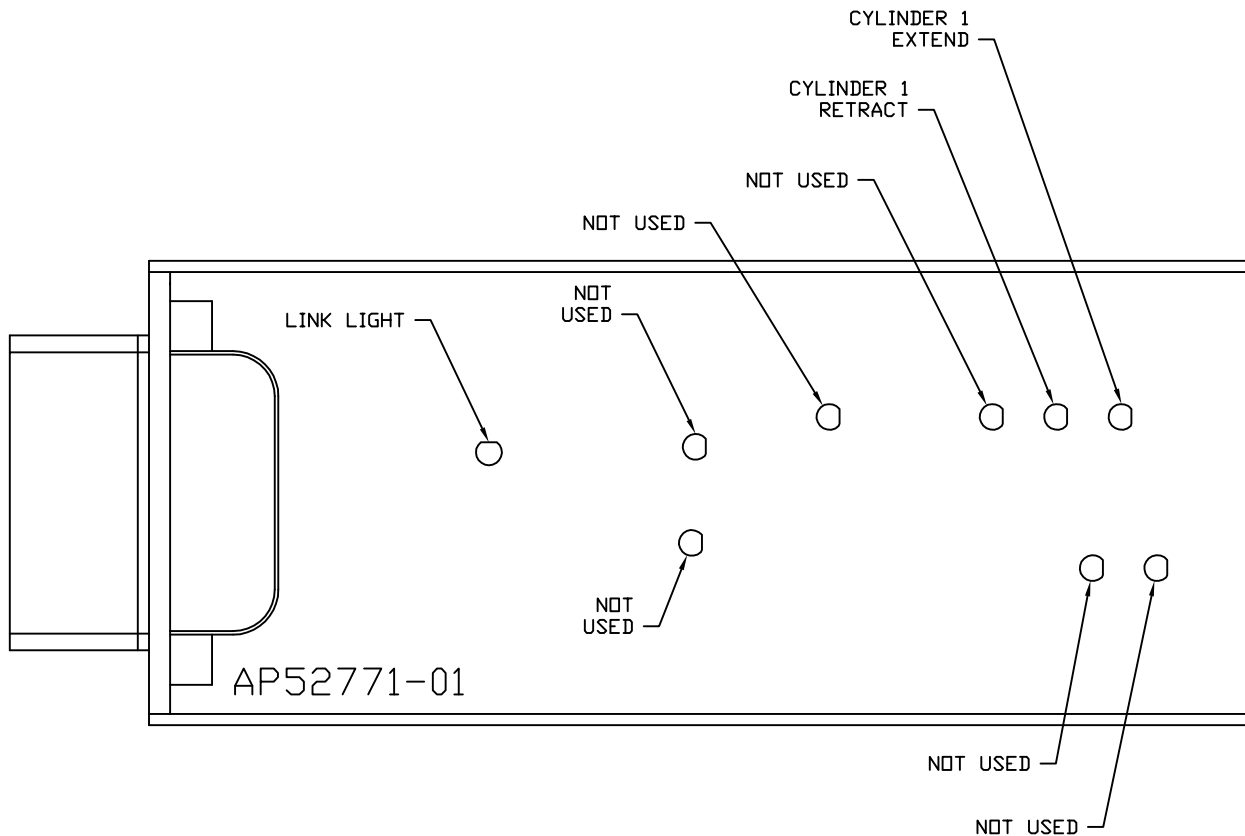
|  |         |                             |                               |  |  |
|--|---------|-----------------------------|-------------------------------|--|--|
|  |         | <b>HWH</b>                  |                               | I-80 EXIT 267 SOUTH<br>RT 1 MOSCOW, IOWA 52760 |  |
|  |         | SCALE 1:3                   | DATE 31JUL17                  | DRAWN BY .                                     |  |
|  |         | SYSTEM SCHEMATIC ELEC       |                               |  |  |
| NO.  | DATE    | REVISION                    |                               |  |  |
| A  | 31JUL17 | AD'D OVERRIDE, CURB SW WARN |                               |  |  |
| A  | 19JAN17 | WAS "STEP IN"&"STEP OUT"    |                               |  |  |
| THE INFORMATION DISCLOSED ON THIS DRAWING IS CONFIDENTIAL AND MUST NOT BE DISCLOSED OR USED IN ANY MANNER WHICH WILL BE DETRIMENTAL TO THE HWH CORPORATION |         |                             | DRAWING NUMBER<br>MP91211 A/G |  |  |

FRONT VIEW - AP52771-01



- PIN
- A1. BLACK - N/C
  - A2. YELLOW - CAN HIGH
  - A3. N/C
  - A4. N/C
  - A5. BLK(W5700) - ROOM 1 OUT LIMIT SWITCH
  - A6. BLK(W5000) - ROOM 1 EXTEND
  - A7. BLK(W5100) - ROOM 1 RETRACT
  - A8. N/C
  - B1. N/C
  - B2. GREEN - CAN LOW
  - B3. N/C
  - B4. N/C
  - B5. N/C
  - B6. N/C
  - B7. N/C
  - B8. N/C
  - C1. RED(W6101) - ROOM SWITCH POWER
  - C2. CAN SHIELD
  - C3. N/C
  - C4. N/C
  - C5. N/C
  - C6. N/C
  - C7. N/C
  - C8. N/C
  - D1. RED(W6105) - OEM SUPPLIED 5A BATTERY
  - D2. WHT(W6236) - LIMIT SWITCH GROUND
  - D3. N/C
  - D4. BLK(W5703) - ROOM 1 IN LIMIT SWITCH
  - D5. N/C
  - D6. N/C
  - D7. N/C
  - D8. BLACK - N/C

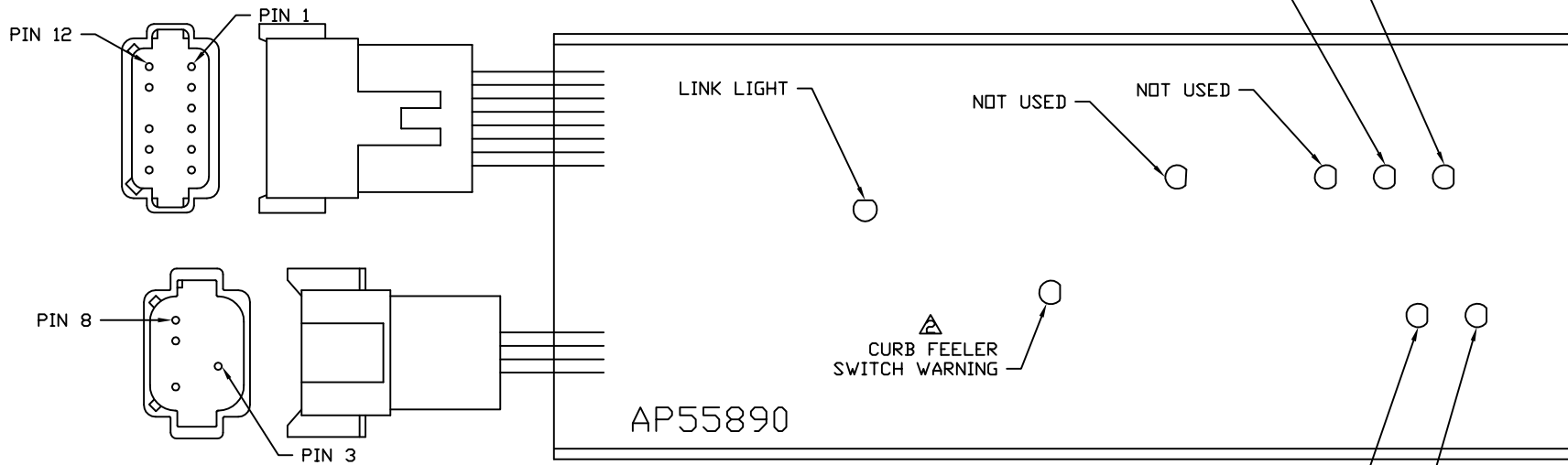
NOTE: WIRE NUMBERS ON THIS SHEET ARE REFERENCED TO HARNESS PLUGS.



NOTE: INSTALLATION MUST CONFORM TO GOOD SHOP PRACTICES, SAE STANDARDS, RVIA STANDARDS, AND OTHER APPLICABLE STANDARDS.

(BROWN)  
PIN

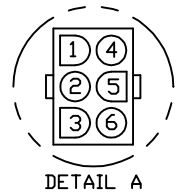
- 1 WHT(W6231) - GROUND
- 2 BLK(W5730) - STEP MASTER SWITCH
- 3 BLK(W5731) - MAGNETIC DOOR SWITCH
- 4 BLK(W5732) - CURB FEELER SWITCH
- 5 BLK(W5733) - SHIN GUARD SWITCH
- 6 WHT(W6230) - GROUND
- 7 RED(W6800) - +12V TO STEP MASTER SWITCH
- 8 BLK(W5700) - STEP IN LIMIT SWITCH
- 9 BLK(W5702) - STEP OUT LIMIT SWITCH
- 10 N/C
- △ 11 BLK(W7540) - OVERRIDE SWITCH
- 12 RED(W6801) - +12V TO MAGNETIC DOOR SWITCH



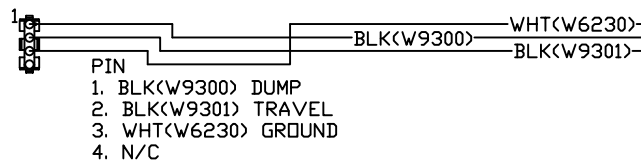
(BLACK)  
PIN

- 1 N/C
- 2 N/C
- 3 RED(W6105) - OEM SUPPLIED 5A BATTERY
- 4 N/C
- 5 CAN SHIELD
- 6 N/C
- 7 GREEN - CAN LOW
- 8 YELLOW - CAN HI

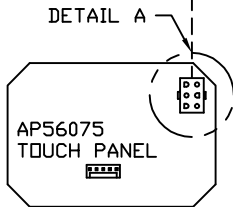
NOTE: INSTALLATION MUST CONFORM TO GOOD SHOP PRACTICES, SAE STANDARDS, RVIA STANDARDS, AND OTHER APPLICABLE STANDARDS.



TO OEM PROVIDED  
PILOT DUMP CONNECTION

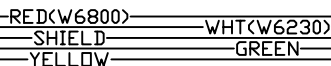
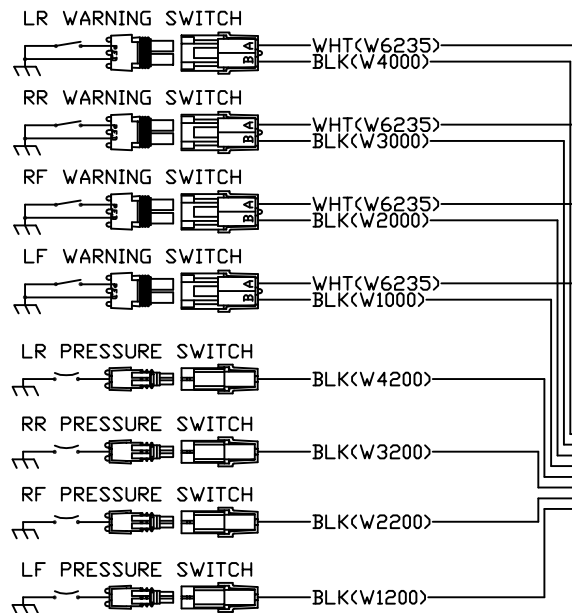
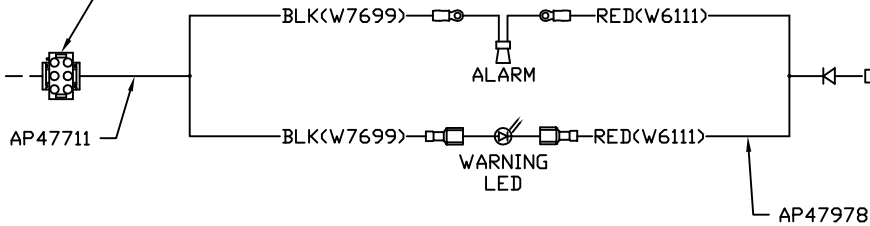


- PIN  
1. N/C  
2. N/C  
3. N/C  
4. N/C  
5. BLK(W7699) WARNING LED/ALARM CONTROL  
6. N/C



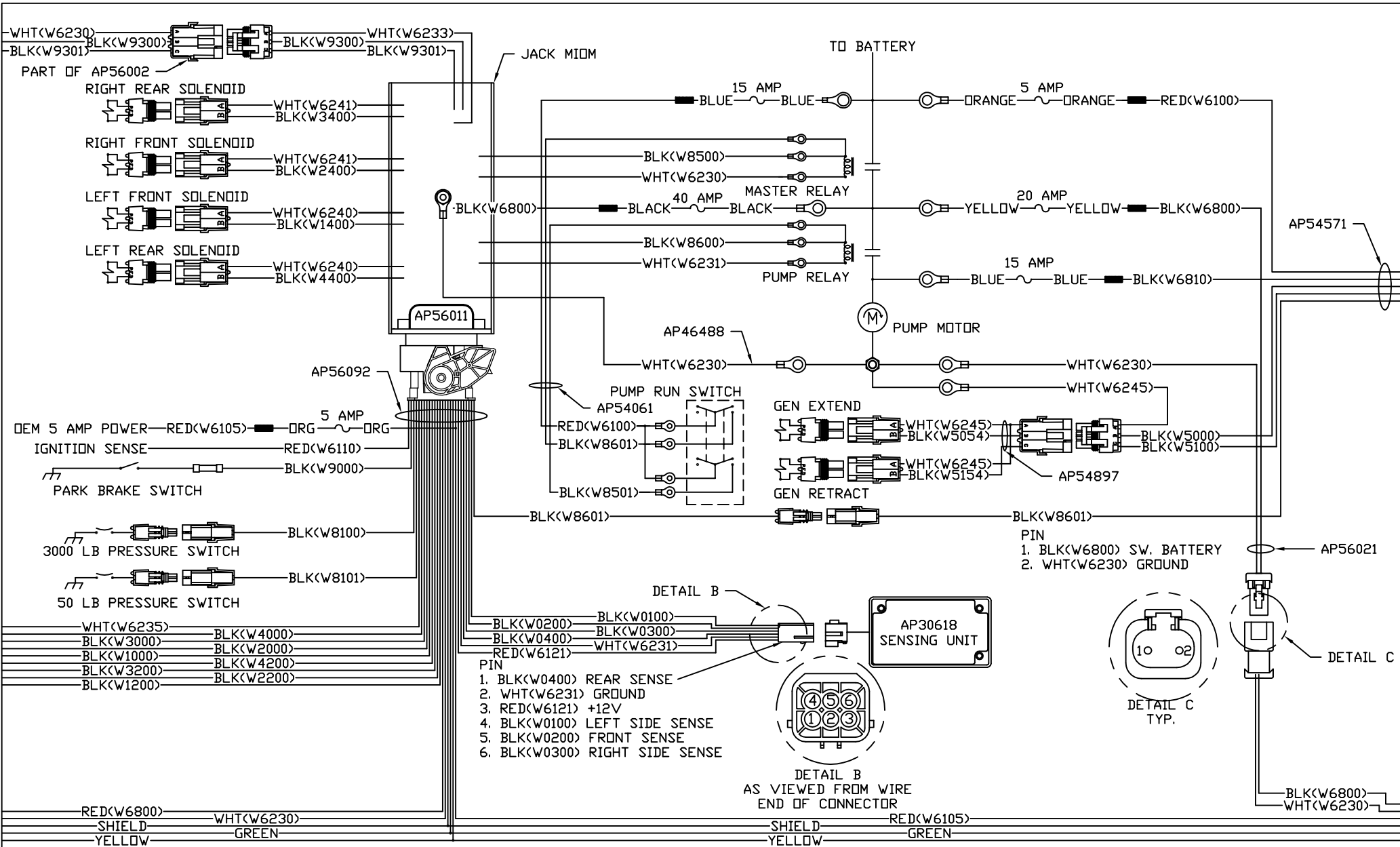
- PIN  
1. YELLOW CAN HI  
2. GREEN CAN LOW  
3. CAN SHIELD  
4. WHT(W6230) GROUND  
5. RED(W6800) POWER

120 OHM  
TERMINATION  
RESISTOR

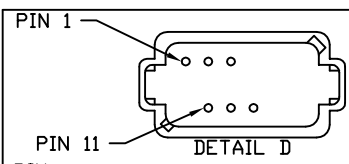
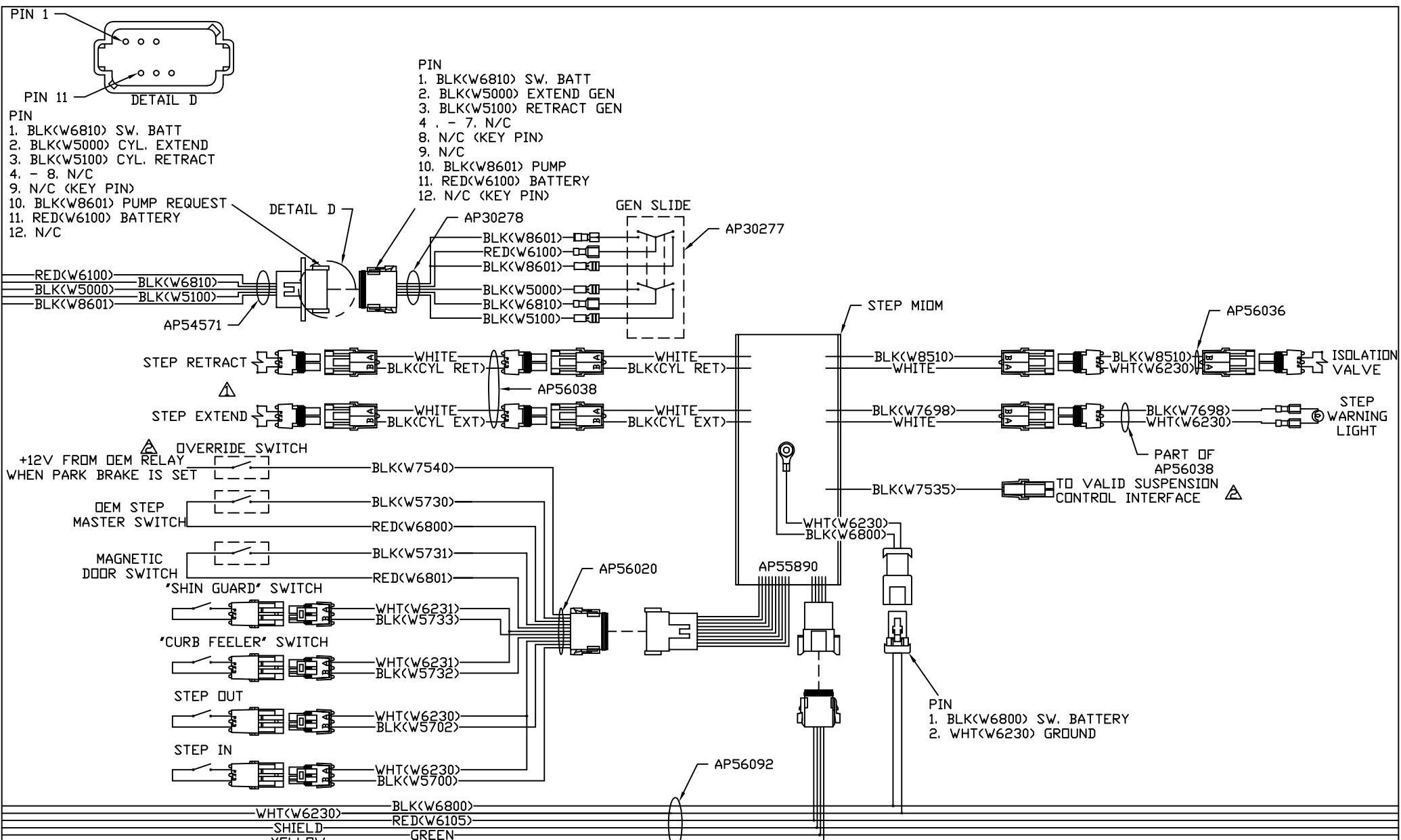


NOTE: INSTALLATION MUST CONFORM TO GOOD SHOP PRACTICES, SAE STANDARDS, RVIA STANDARDS, AND OTHER APPLICABLE STANDARDS.

MP91211 D  
29FEB16



NOTE: INSTALLATION MUST CONFORM TO GOOD SHOP PRACTICES, SAE STANDARDS, RVIA STANDARDS, AND OTHER APPLICABLE STANDARDS.



- PIN
1. BLK(W6810) SW. BATT
  2. BLK(W5000) CYL. EXTEND
  3. BLK(W5100) CYL. RETRACT
  4. - 8. N/C
  9. N/C (KEY PIN)
  10. BLK(W8601) PUMP REQUEST
  11. RED(W6100) BATTERY
  12. N/C

- PIN
1. BLK(W6810) SW. BATT
  2. BLK(W5000) EXTEND GEN
  3. BLK(W5100) RETRACT GEN
  4. - 7. N/C
  8. N/C (KEY PIN)
  9. N/C
  10. BLK(W8601) PUMP
  11. RED(W6100) BATTERY
  12. N/C (KEY PIN)

△ OVERRIDE SWITCH  
 +12V FROM DEM RELAY WHEN PARK BRAKE IS SET

DEM STEP MASTER SWITCH

MAGNETIC DOOR SWITCH

"SHIN GUARD" SWITCH

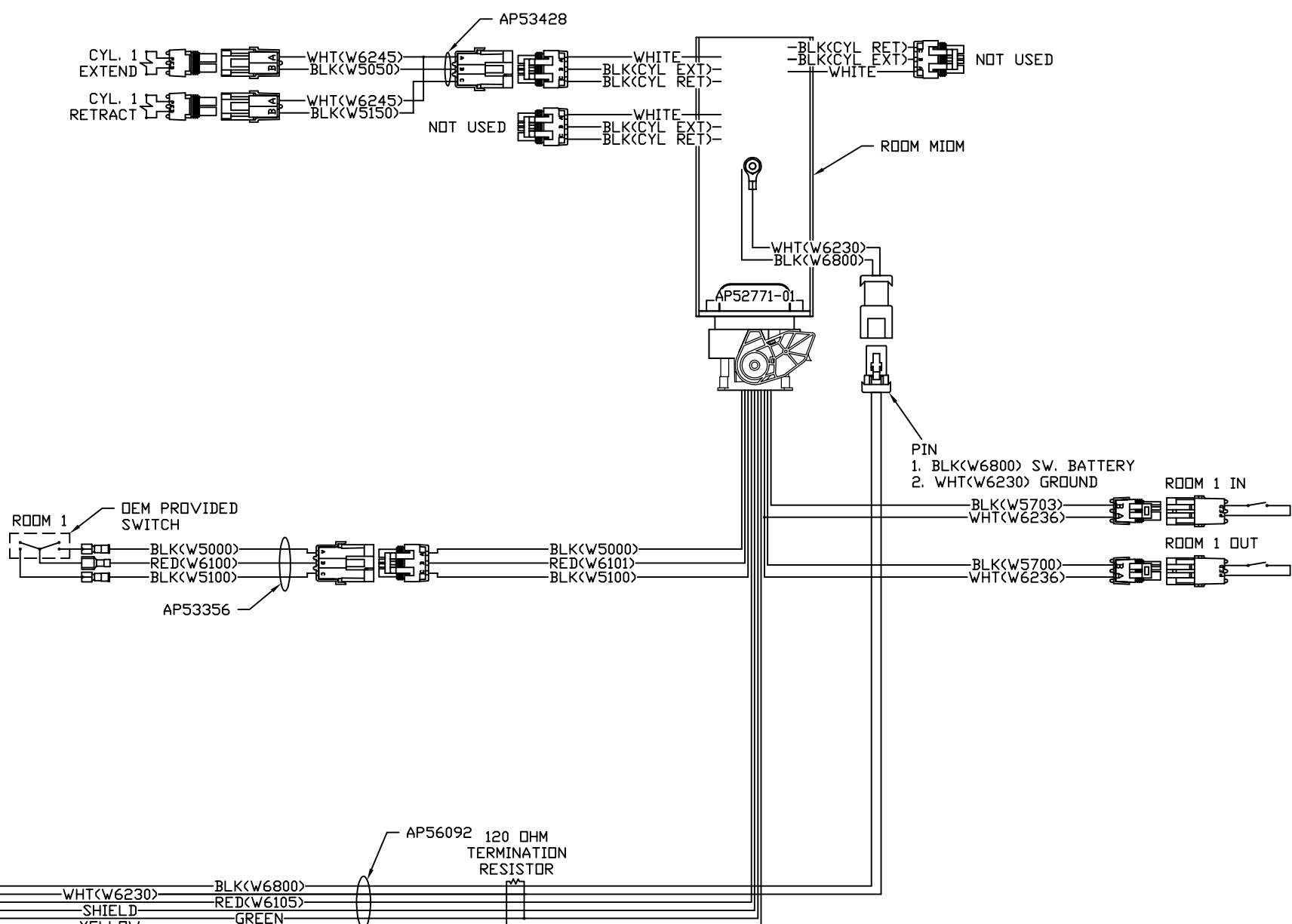
"CURB FEELER" SWITCH

STEP OUT

STEP IN

WHT(W6230) BLK(W6800)  
 SHIELD RED(W6105)  
 YELLOW GREEN

NOTE: INSTALLATION MUST CONFORM TO GOOD SHOP PRACTICES, SAE STANDARDS, RVIA STANDARDS, AND OTHER APPLICABLE STANDARDS.



NOTE: INSTALLATION MUST CONFORM TO GOOD SHOP PRACTICES, SAE STANDARDS, RVIA STANDARDS, AND OTHER APPLICABLE STANDARDS.