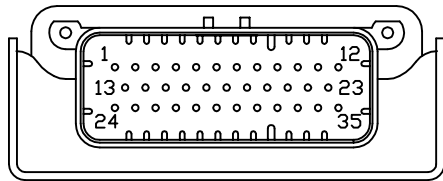
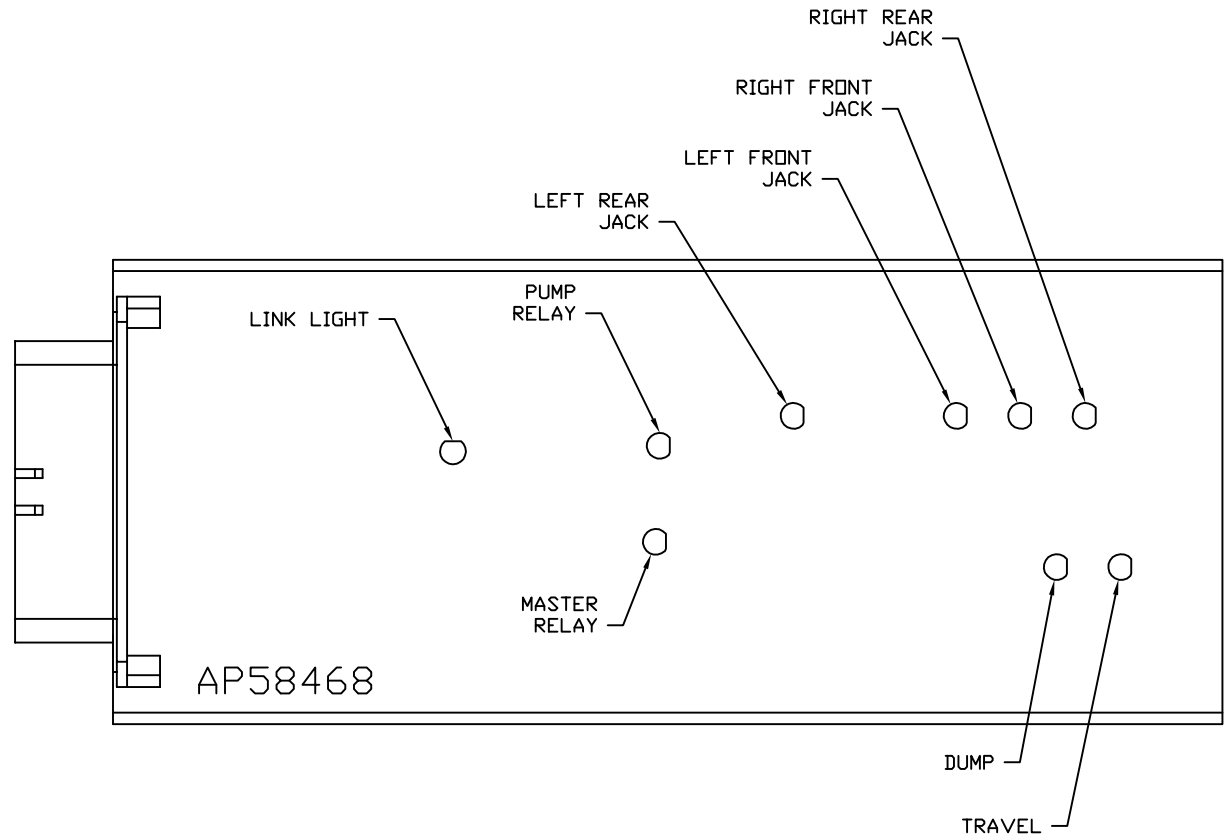


FRONT VIEW - AP58468



- PIN
1. BLK(W9000) - PARK BRAKE
  2. N/C
  3. BLK(W8101) - 50 LB. PRESSURE SWITCH
  4. BLK(W0100) - LEFT SIDE SENSE
  5. BLK(W0400) - REAR SENSE
  6. BLK(W3000) - RIGHT REAR JACK WARNING SWITCH
  7. BLK(W2200) - RIGHT FRONT JACK PRESSURE SWITCH
  8. N/C
  9. BLK(W8601) - GEN SLIDE PUMP REQUEST
  10. N/C
  11. WHT(W6235) - WARNING SWITCH GROUND
  12. N/C
  13. RED(W6110) - IGNITION SENSE
  14. N/C
  15. N/C
  16. BLK(W0300) - RIGHT SIDE SENSE
  17. BLK(W2000) - RIGHT FRONT JACK WARNING SWITCH
  18. BLK(W1200) - LEFT FRONT JACK PRESSURE SWITCH
  19. N/C
  20. WHT(W6230) - TOUCH PANEL GROUND
  21. CAN SHIELD
  22. YELLOW - CAN HIGH
  23. GREEN - CAN LOW
  24. N/C
  25. BLK(W4200) - LEFT REAR JACK PRESSURE SWITCH
  26. BLK(W8100) - 3000 LB. PRESSURE SWITCH
  27. BLK(W0200) - FRONT SENSE
  28. BLK(W1000) - LEFT FRONT JACK WARNING SWITCH
  29. BLK(W4000) - LEFT REAR JACK WARNING SWITCH
  30. BLK(W3200) - RIGHT REAR JACK PRESSURE SWITCH
  31. N/C
  32. WHT(W6231) - LEVEL SENSOR GROUND
  33. RED(W6121) - LEVEL SENSOR POWER
  34. RED(W6801) - TOUCH PANEL POWER
  35. RED(W6105) - OEM SUPPLIED 5A BATTERY POWER

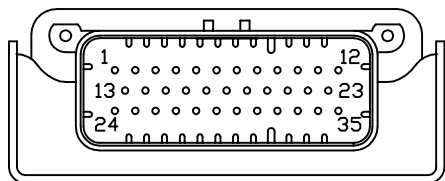
NOTE: WIRE NUMBERS ON THIS SHEET ARE REFERENCED TO HARNESS PLUGS.



NOTE: INSTALLATION MUST CONFORM TO GOOD SHOP PRACTICES, SAE STANDARDS, RVIA STANDARDS, AND OTHER APPLICABLE STANDARDS.

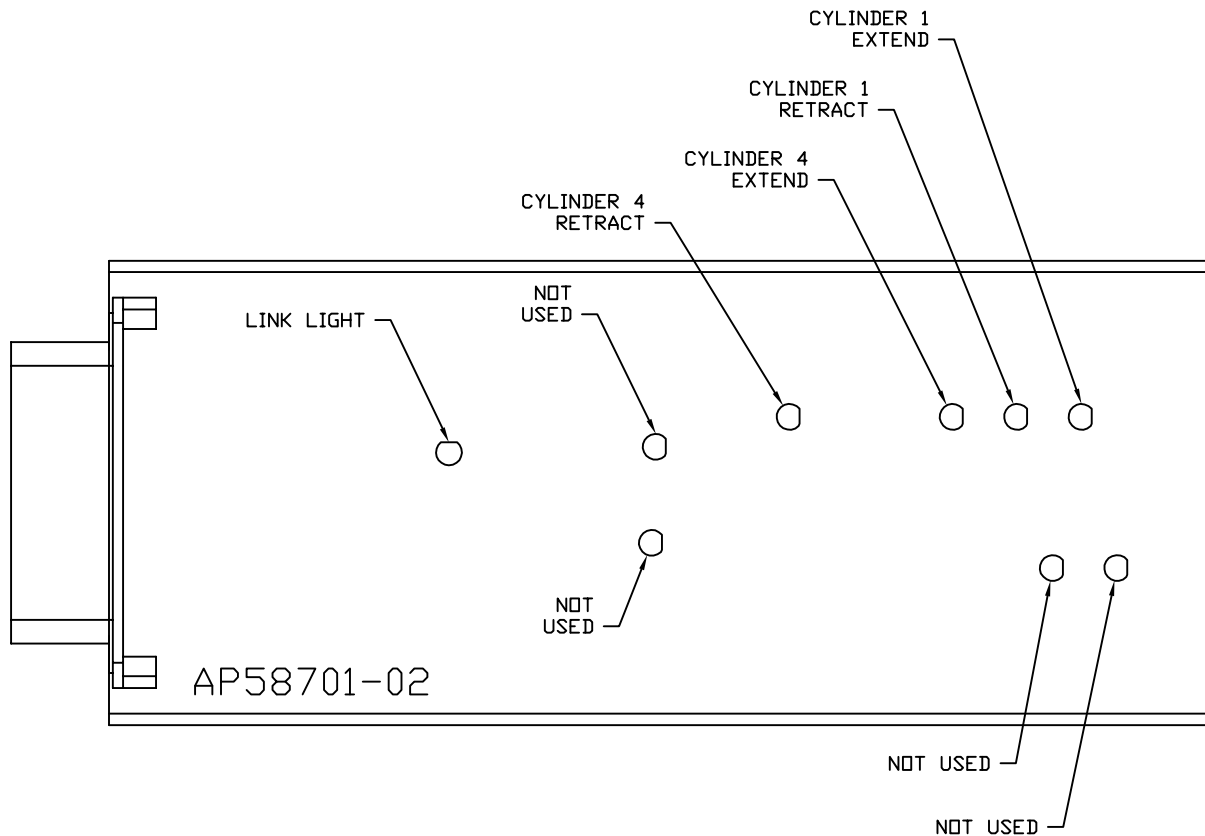
		<b>HWH</b>		I-80 EXIT 267 SOUTH RT 1 MOSCOW, IOWA 52760	
		SCALE 1:3	DATE 16MAR18	DRAWN BY .	
		<b>SYSTEM SCHEMATIC ELEC</b>			
NO.	DATE	REVISION			
THE INFORMATION DISCLOSED ON THIS DRAWING IS CONFIDENTIAL AND MUST NOT BE DISCLOSED OR USED IN ANY MANNER WHICH WILL BE DETRIMENTAL TO THE HWH CORPORATION			DRAWING NUMBER MP91374 A/F		

FRONT VIEW - AP58701-02

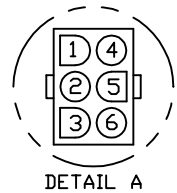


- PIN
1. N/C
  2. BLK(W5101) - ROOM 4 RETRACT
  3. N/C
  4. N/C
  5. N/C
  6. BLK(W5704) - ROOM 4 IN LIMIT SWITCH
  7. N/C
  8. N/C
  9. N/C
  10. N/C
  11. N/C
  12. N/C
  13. N/C
  14. N/C
  15. N/C
  16. N/C
  17. BLK(W5700) - ROOM 1 OUT LIMIT SWITCH
  18. N/C
  19. BLK(W5000) - ROOM 1 EXTEND
  20. N/C
  21. CAN SHIELD
  22. YELLOW - CAN HIGH
  23. GREEN - CAN LOW
  24. N/C
  25. BLK(W5001) - ROOM 4 EXTEND
  26. N/C
  27. N/C
  28. BLK(W5703) - ROOM 1 IN LIMIT SWITCH
  29. BLK(W5701) - ROOM 4 OUT LIMIT SWITCH
  30. BLK(W5100) - ROOM 1 RETRACT
  31. N/C
  32. WHT(W6236) - LIMIT SWITCH GROUND
  33. RED(W6101) - ROOM SWITCH POWER
  34. N/C
  35. RED(W6105) - OEM SUPPLIED 5A BATTERY

NOTE: WIRE NUMBERS ON THIS SHEET ARE REFERENCED TO HARNESS PLUGS.

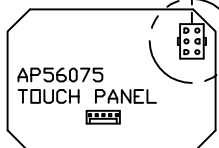


NOTE: INSTALLATION MUST CONFORM TO GOOD SHOP PRACTICES, SAE STANDARDS, RVIA STANDARDS, AND OTHER APPLICABLE STANDARDS.



DETAIL A

- PIN
- 1. N/C
  - 2. N/C
  - 3. N/C
  - 4. N/C
  - 5. BLK(W7699) WARNING LED/ALARM CONTROL
  - 6. N/C



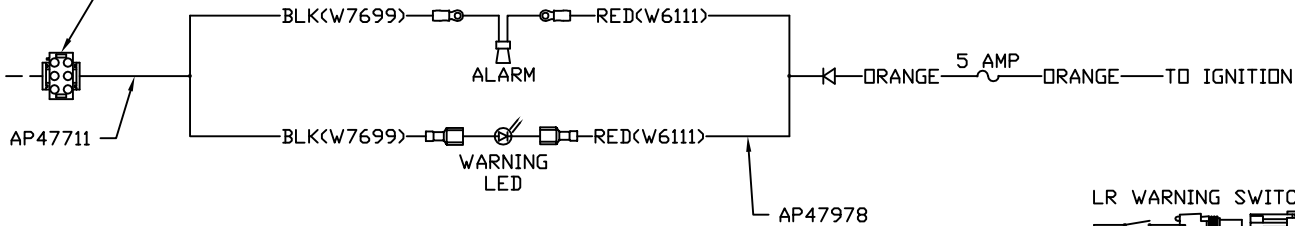
DETAIL A

- PIN
- 1 YELLOW CAN HI
  - 2 GREEN CAN LOW
  - 3 CAN SHIELD
  - 4 WHT(W6230) GROUND
  - 5 RED(W6800) POWER

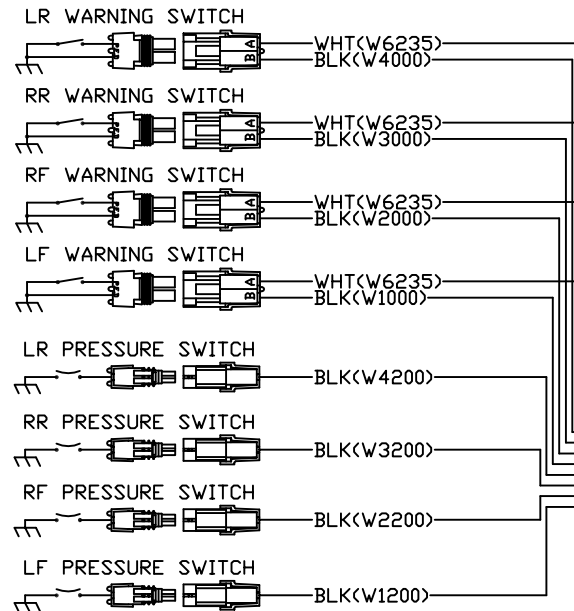
120 OHM  
TERMINATION  
RESISTOR

TO OEM PROVIDED  
PILOT DUMP CONNECTION

- 1
- BLK(W9300)
  - WHT(W6230)
  - BLK(W9301)
  - BLK(W9301) TRAVEL
  - WHT(W6230) GROUND
  - N/C



AP58691

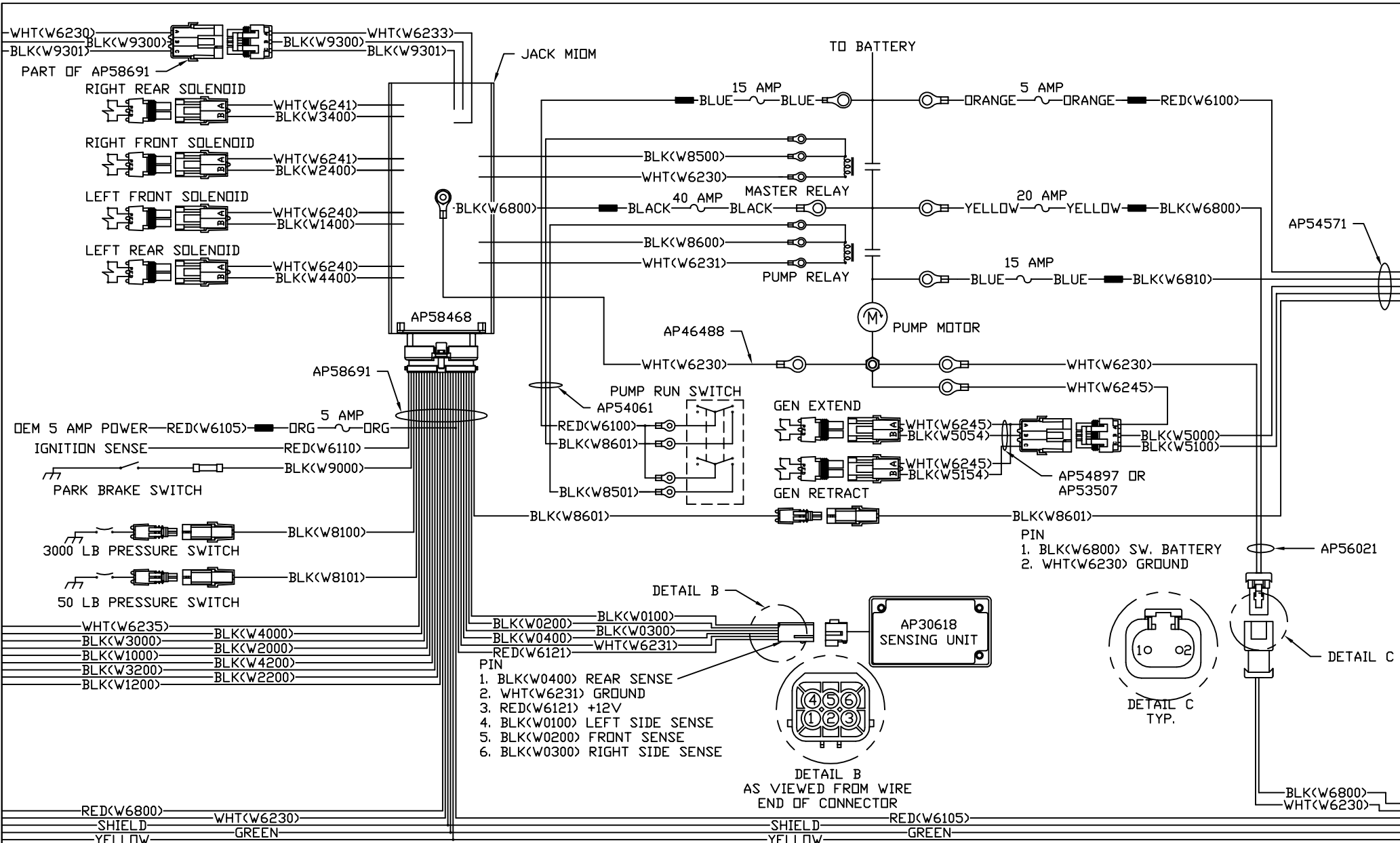


RED(W6800)  
SHIELD  
YELLOW

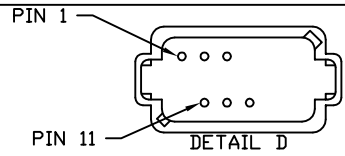
WHT(W6230)  
GREEN

NOTE: INSTALLATION MUST CONFORM TO GOOD SHOP PRACTICES, SAE STANDARDS, RVIA STANDARDS, AND OTHER APPLICABLE STANDARDS.

MP91374 C  
16MAR18

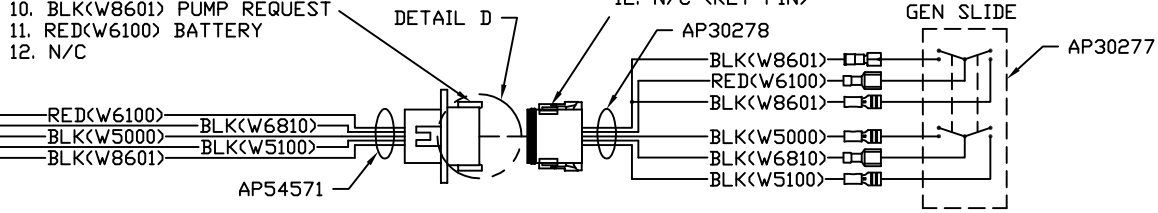


NOTE: INSTALLATION MUST CONFORM TO GOOD SHOP PRACTICES, SAE STANDARDS, RVIA STANDARDS, AND OTHER APPLICABLE STANDARDS.



- PIN
1. BLK(W6810) SW. BATT
  2. BLK(W5000) CYL. EXTEND
  3. BLK(W5100) CYL. RETRACT
  4. - 8. N/C
  9. N/C (KEY PIN)
  10. BLK(W8601) PUMP REQUEST
  11. RED(W6100) BATTERY
  12. N/C

- PIN
1. BLK(W6810) SW. BATT
  2. BLK(W5000) EXTEND GEN
  3. BLK(W5100) RETRACT GEN
  4. - 7. N/C
  8. N/C (KEY PIN)
  9. N/C
  10. BLK(W8601) PUMP
  11. RED(W6100) BATTERY
  12. N/C (KEY PIN)



WHT(W6230)

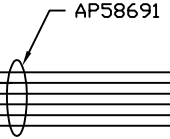
SHIELD

YELLOW

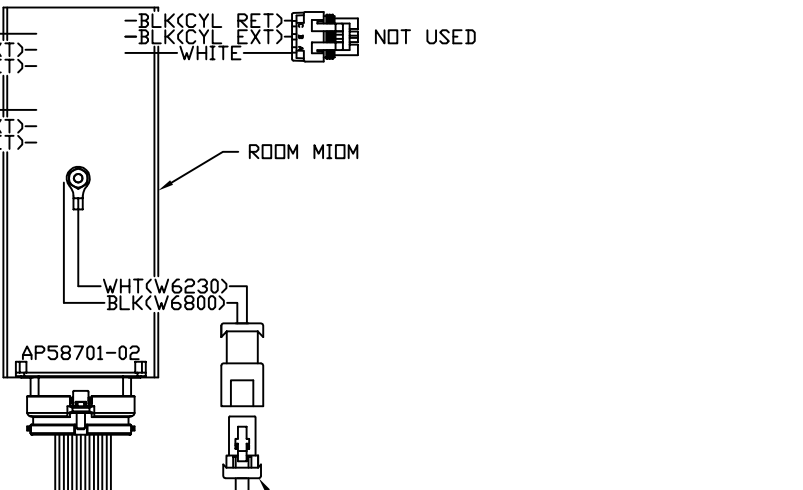
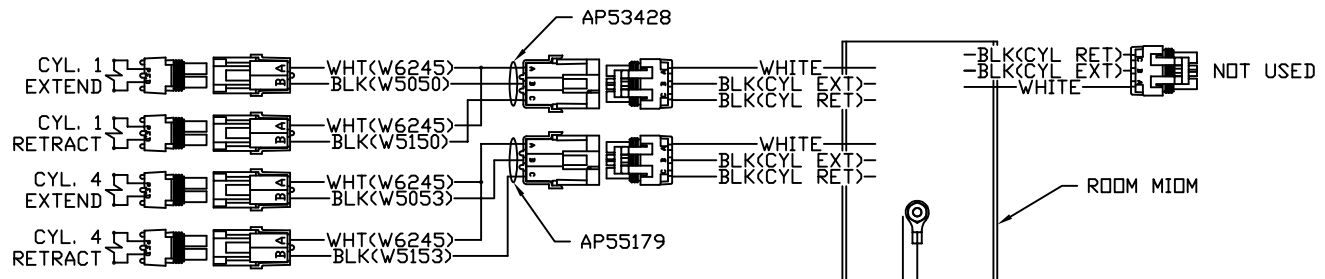
BLK(W6800)

RED(W6105)

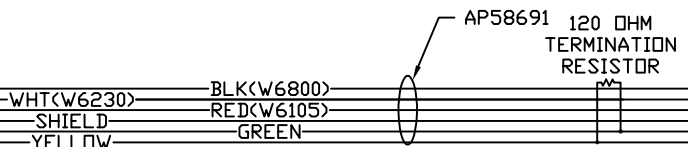
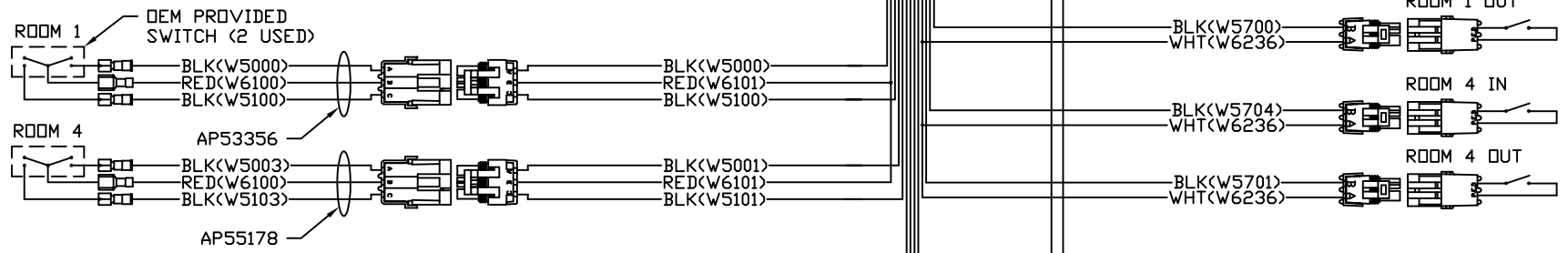
GREEN



NOTE: INSTALLATION MUST CONFORM TO GOOD SHOP PRACTICES, SAE STANDARDS, RVIA STANDARDS, AND OTHER APPLICABLE STANDARDS.



- PIN  
 1. BLK<W6800> SW. BATTERY  
 2. WHT<W6230> GROUND



NOTE: INSTALLATION MUST CONFORM TO GOOD SHOP PRACTICES, SAE STANDARDS, RVIA STANDARDS, AND OTHER APPLICABLE STANDARDS.